



Oakville Triangle Block D Townhomes

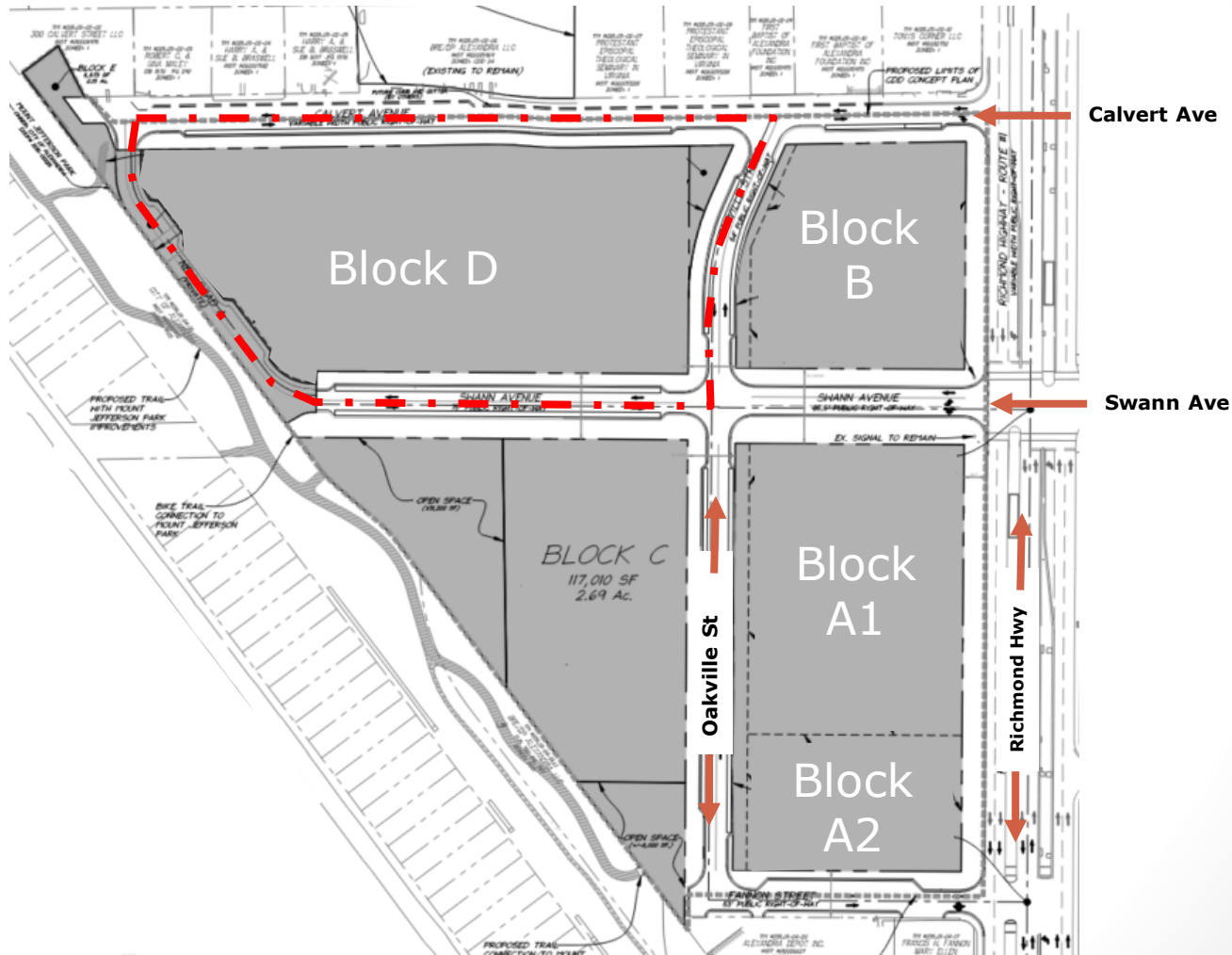
***Development Special Use Permit #2021-10025
Transportation Management Plan Special Use Permit
#2021-00084***

City Council
November 13, 2021

Site Location



Oakville Triangle Redevelopment



Site Plan

New Private Pedestrian Mews



DSUP#2021-10025 / TMP SUP#2021-00084

Common Architectural Language



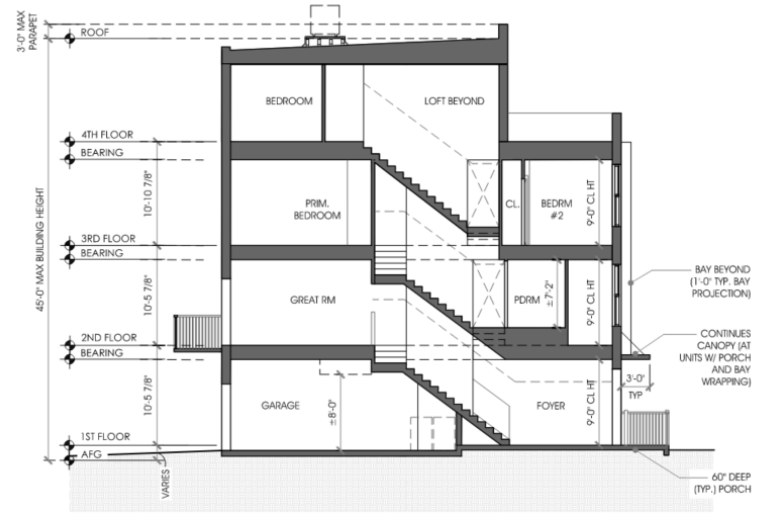
DSUP#2021-10025 / TMP SUP#2021-00084



Typical Front and Side Elevation with Palette of Materials.



Typical Rear Elevation



Typical Townhome Section

Site Responsive Design



Townhomes with contemporary porches.



Townhomes with stoops.



Four-story building expression.

Open Space

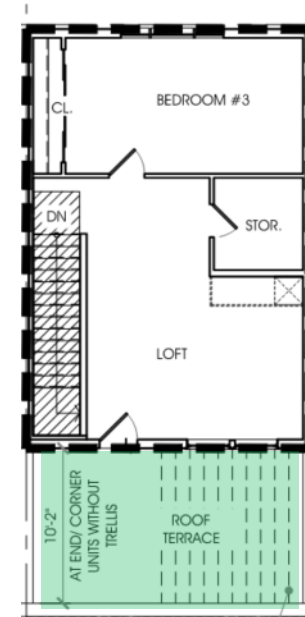
- Applicant meets 15% at-grade open space and 10% above-grade open space requirements per CDD conditions.
- Final design of publicly accessible open space to respond to public art.



Publicly accessible open space.



Private open space for all townhome residents.



Private rooftop terraces on each townhome.

Conformance with SAP and CDD

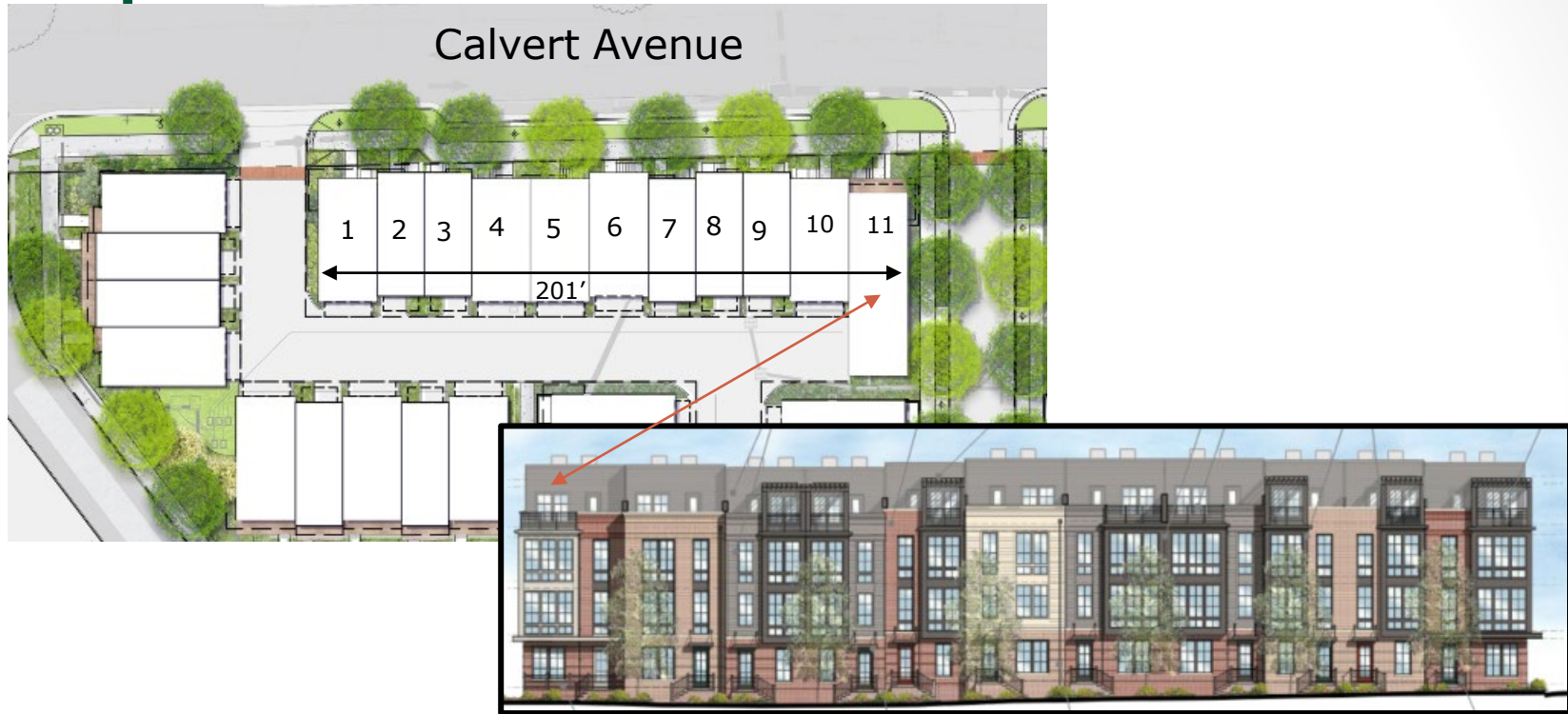


DSUP#2021-10025 / TMP SUP#2021-00084



- Townhome use
- Adheres to square footages, height, open space requirements
- New north-south vehicular connection

Special Use Permits



Architectural variation in materials, colors, roofline and appearance.

- Units in a Townhouse Structure Section 7-1600
- Zoning Ordinance limited to 8 unless increased through SUP
 - Less than 212 feet in total length; SUP permitted in zone
 - Architectural variation in materials, colors, roofline and appearance.
- Transportation Management Plan

Community Benefits

- **84 residences** that meet 2019 Green Building Policy
- Contributions:
 - \$15K for new bikeshare station
 - \$75K for public art
 - Affordable housing provided through previous Oakville Triangle contributions for the CDD
- Transportation:
 - New pedestrian infrastructure around and through the site
 - New north-south connections via pedestrian mews and new road

Recommendation

- Staff and Planning Commission recommend **approval** subject to compliance with all applicable codes and staff recommendations.

