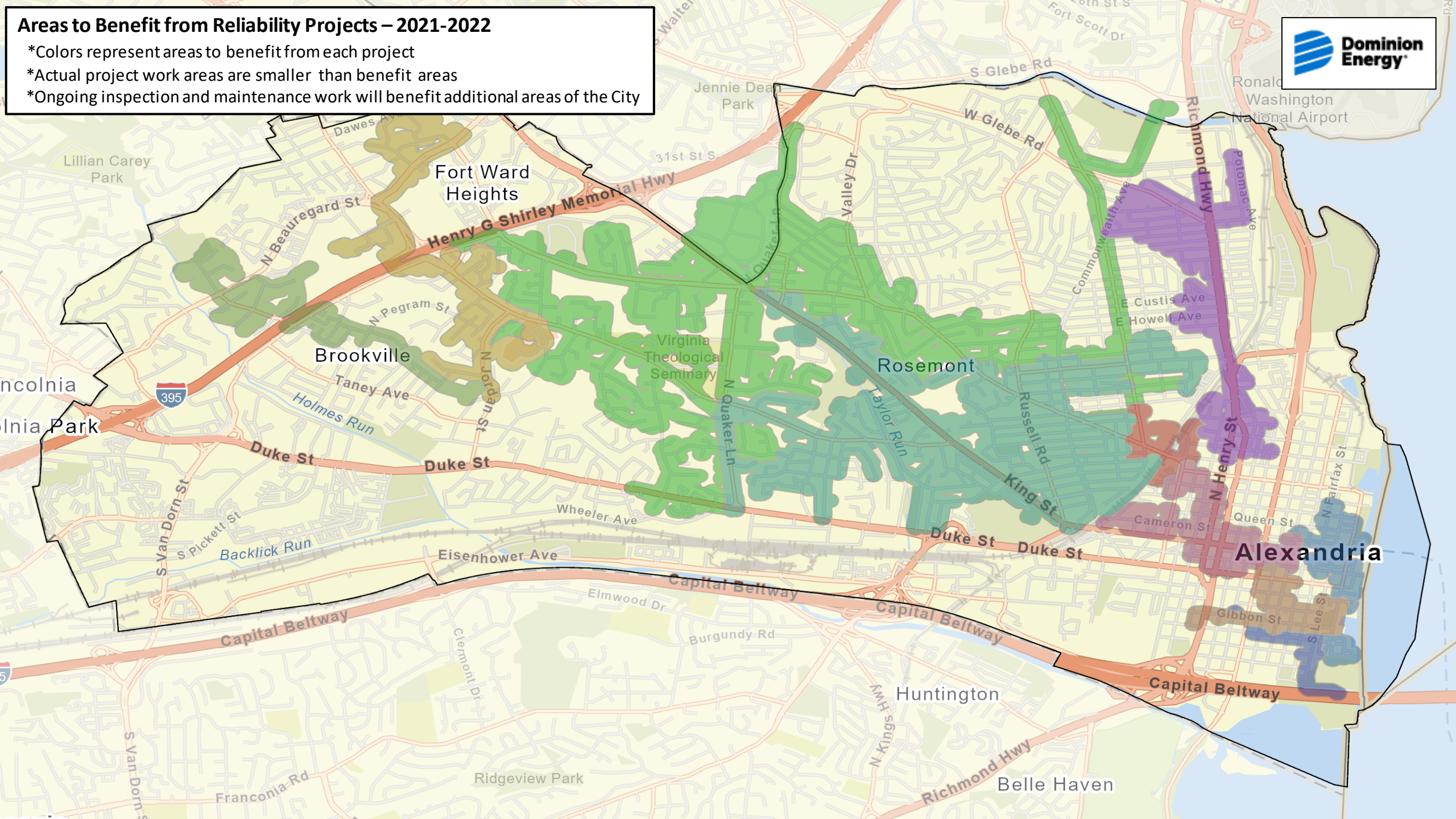


**Areas to Benefit from Reliability Projects – 2021-2022**

- \*Colors represent areas to benefit from each project
- \*Actual project work areas are smaller than benefit areas
- \*Ongoing inspection and maintenance work will benefit additional areas of the City





**Areas to Benefit from New Reliability Projects – 2022-2024**

- \*Colors represent areas to benefit from each project
- \*Actual project work areas are smaller than benefit areas
- \*Ongoing inspection and maintenance work will benefit additional areas of the City

