

POTOMAC YARD METRORAIL STATION PROJECT

City Council Update
May 25, 2021

Agenda

Project Update:

- Upcoming Administrative Project Activities
- Project Progress
- Construction Update
- Discussion

Upcoming Administrative Project Activities

- ❑ PYC substantially reduced temporary wetland impacts

How was this achieved?

PYC was able to reduce the temporary wetland impacts by:

- Continual re-evaluation of construction means and methods to minimize wetland impacts.
- Installed construction fencing based on wetland impact minimization approach.
- Overall impact limits closely controlled
- Access road reduced
- Minimized on-site material storage

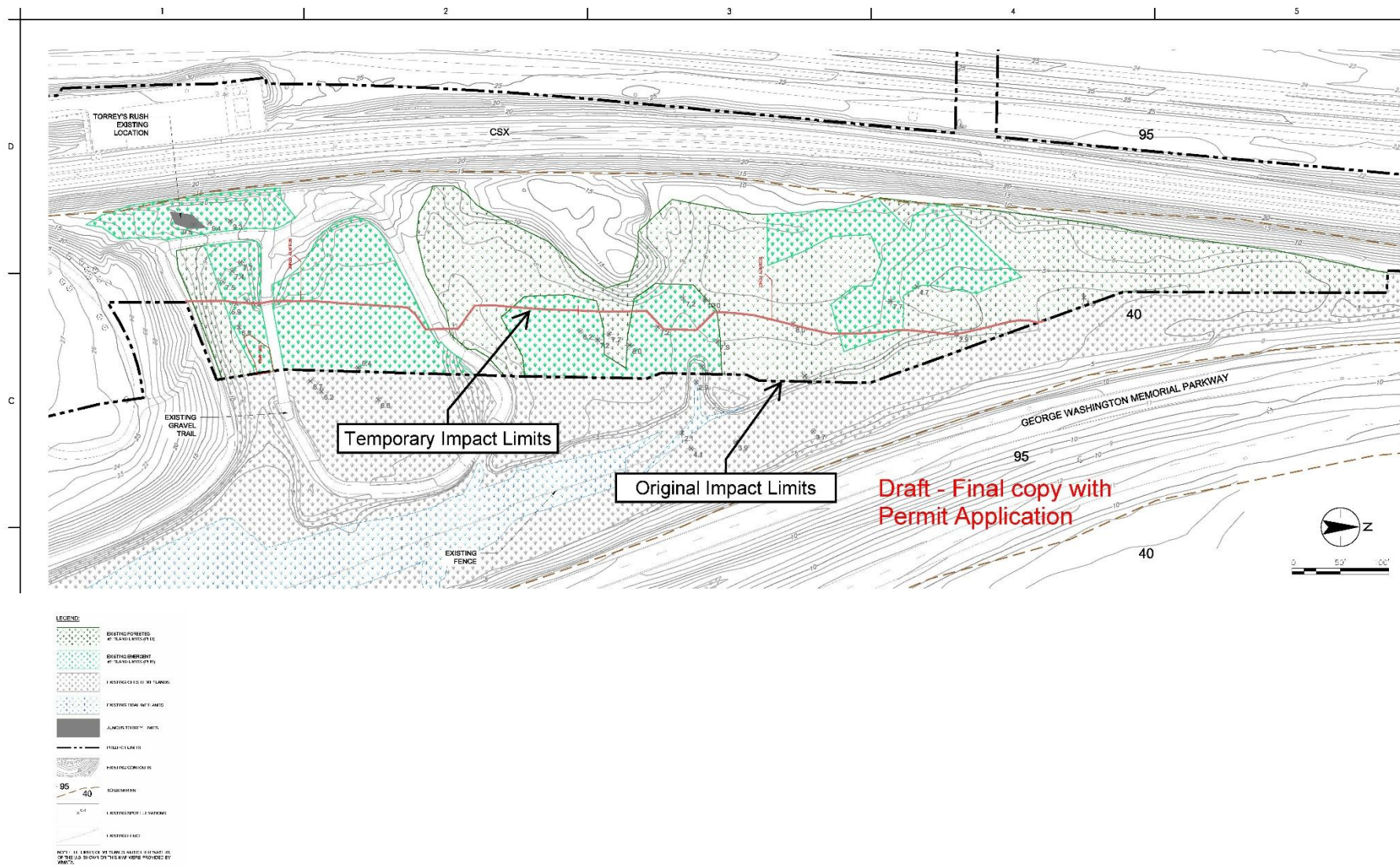
Upcoming Administrative Project Activities

How much were the temporary wetland impacts reduced?

| | Total Area of Impact | Acres of Palustrine Forested (PFO) Wetland | Acres of Palustrine Emergent (PEM) Wetland |
|-------------------------------------|----------------------|--------------------------------------------|--------------------------------------------|
| Permitted Temporary wetland Impacts | 2.01 acres | 1.10 acres | 0.91 acres |
| Reduced Temporary wetland Impacts | 1.01 acres* | 0.75 acres* | 0.26 acres* |

*Areas to be finalized with the submittal of the modification request

Upcoming Administrative Project Activities



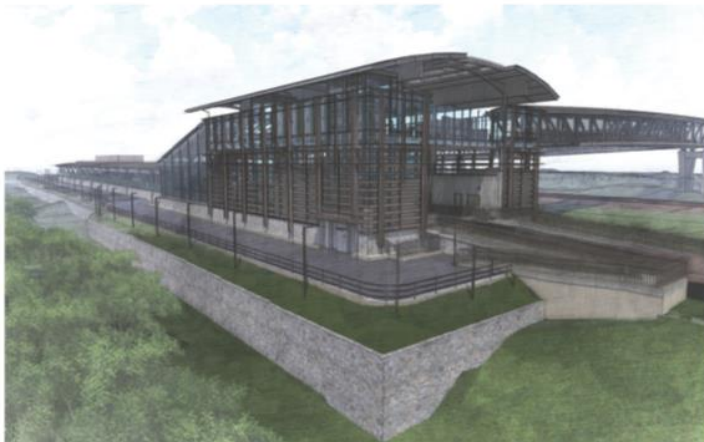
Upcoming Administrative Project Activities

What are the next steps?

- Update the wetland restoration plan with the actual impacted wetland area (The undisturbed wetland area will remain undisturbed)
- Request a minor modification to the VWP (Virginia Water Protection) Individual permit (to reduce temporary impacts) based on regulation 9VAC25-210-180.E.6
- Request a modification to the Army Corps 404 of the Clean Water Act permit- reduction in wetland impacts

Upcoming Administrative Project Activities

- ❑ PYC to submit DSUP minor amendment to add stone retaining wall (east side of station) to approved site



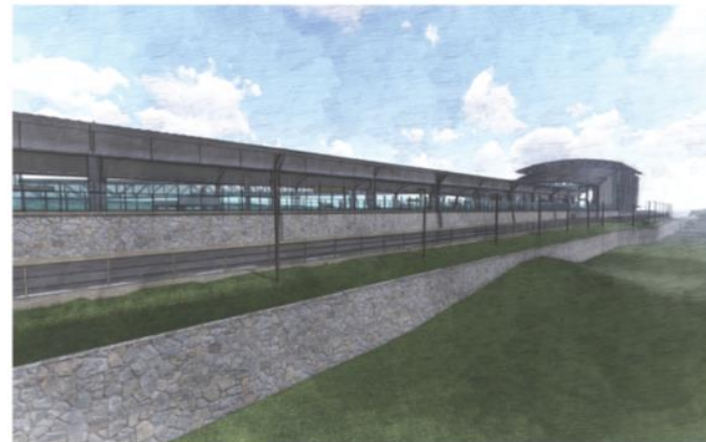
A1 - ONE TIER NORTH EAST CORNER



A2 - ONE TIER SOUTH EAST CORNER



A3 - ONE TIER NORTH EAST

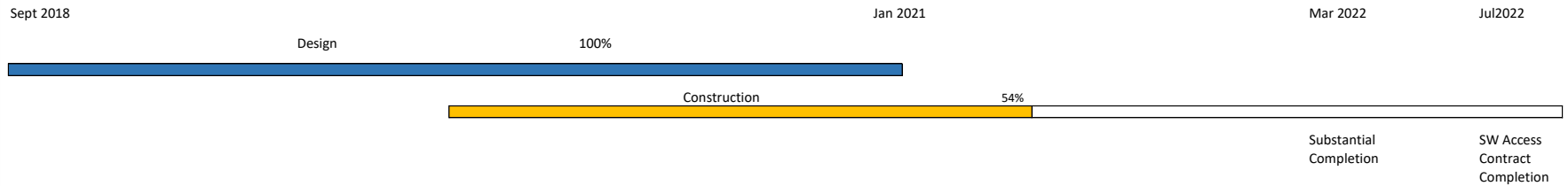


A4 - ONE TIER SOUTH EAST

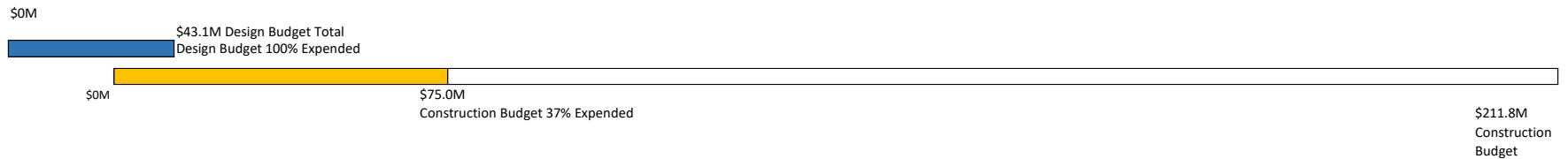
Project Progress Update

PYC's Design / Build Contract Summary

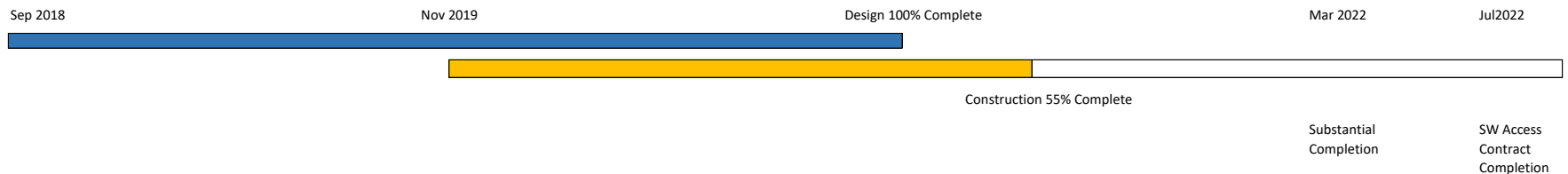
Schedule Progress



Cost Progress



Work Progress



Graphics include Southwest Access. Total Contract value as of May 2021 \$254.9M



Construction Update

AC Switchgear Building:



AC Switchgear Building:





Duct Bank: South End



Station Headhouse: Looking North



Station Headhouse: East Wall



Platforms: Looking South





East Platform Service Area:



Pedestrian Bridge: Mezzanine Level



Pedestrian Bridge:



Station Headhouse: Mezzanine Roof



North Pavilion:





North Pavilion: Interior





Southwest Pavilion:



Potomac Yard Metrorail Station:





Discussion