



SUP #2021-00013

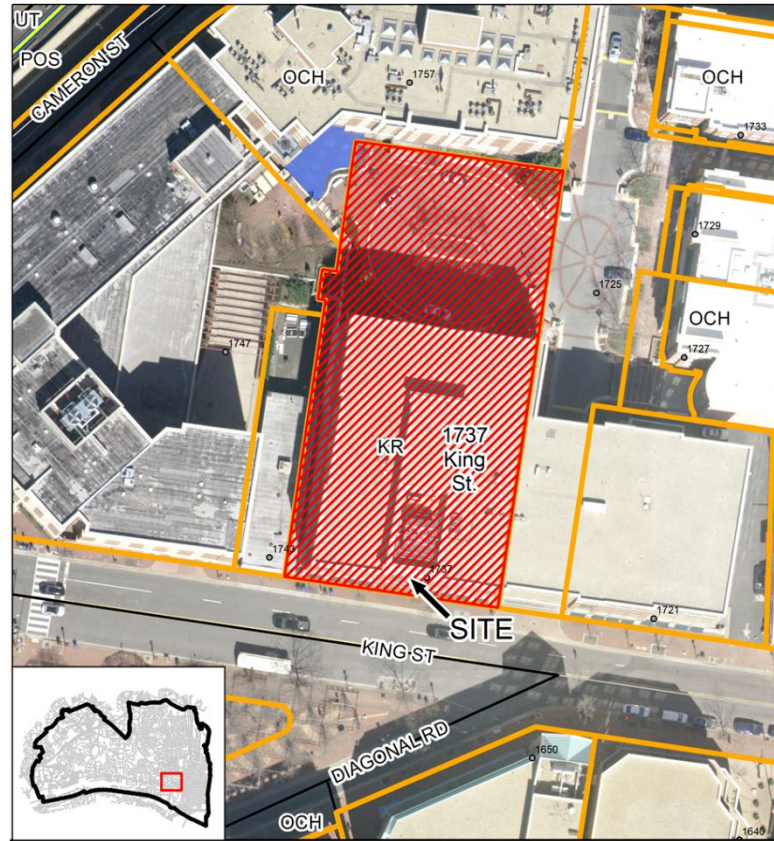
1737 King Street

Planning Commission
May 4, 2021

Site Context

Surrounded by
Commercial

Zoned KR/ King
Street Urban Retail



SUP Request

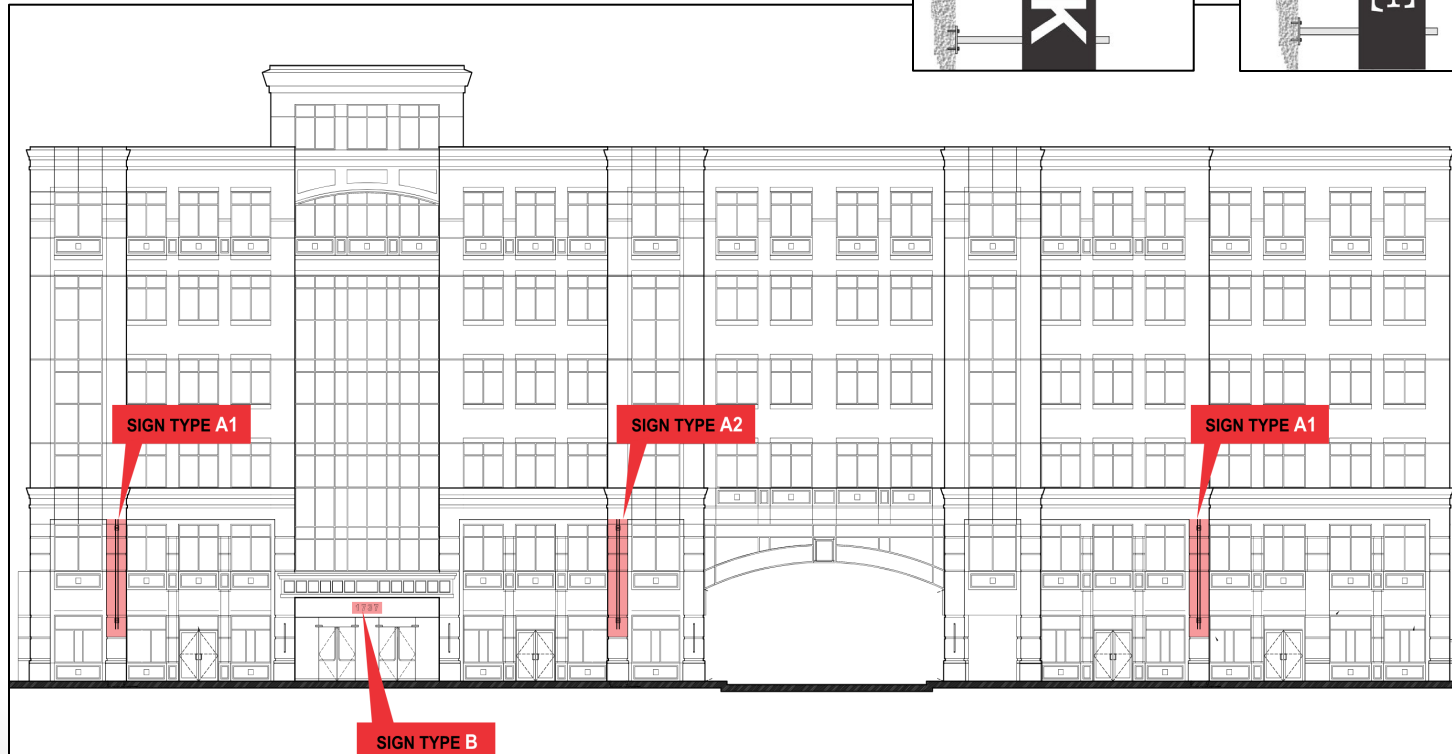
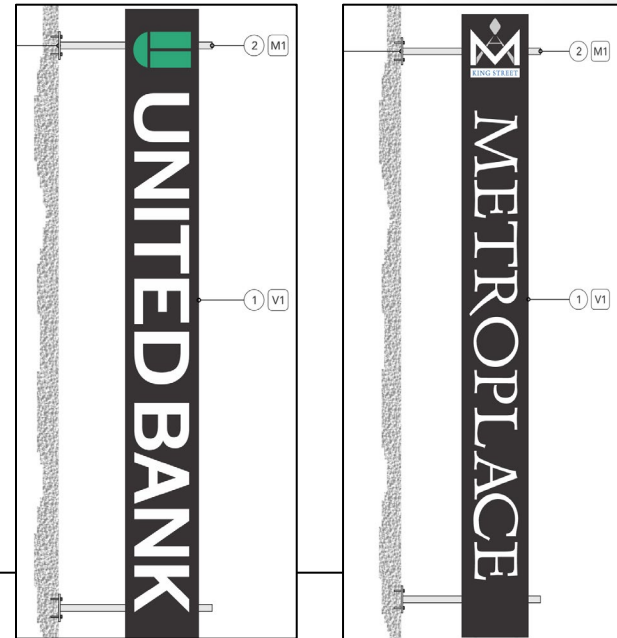
SUP for additional signage square footage for three projecting signs.

	Allowed	Proposed
Square Footage of Projecting Signs	16 sq ft	87.84 sq ft (3 signs, 29.28 sq ft each)



South Front Elevation

Proposed Signage



SUP Considerations

- Proposed signage has exceptional design or approach
- Proposed signage will not have adverse impact on neighborhood
- Proposed signage complies with standards for approval



Staff Recommends Approval