

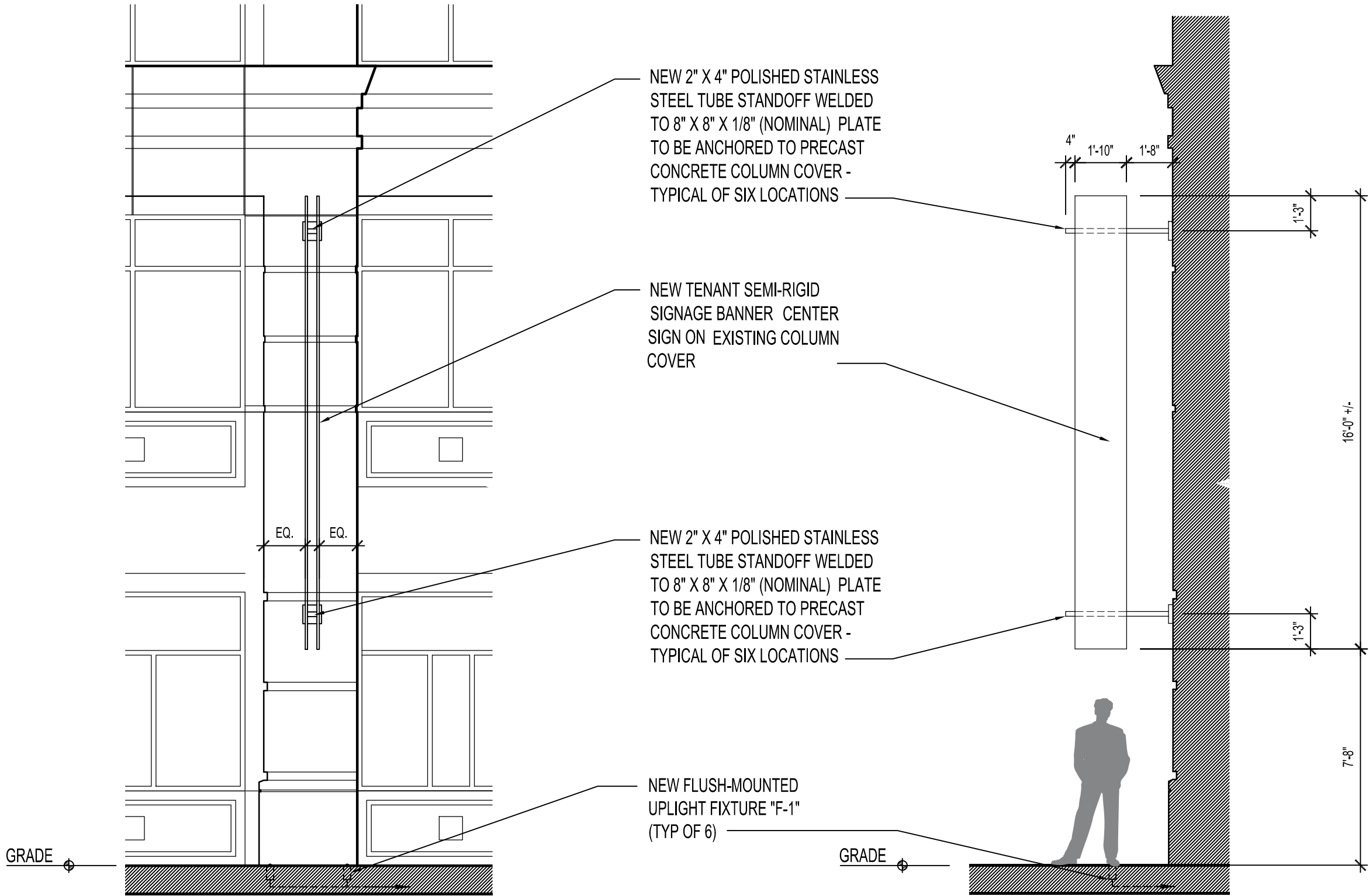
SIGN BLADE ELEVATION (TYP)

SCALE: 1/4" = 1'-0"

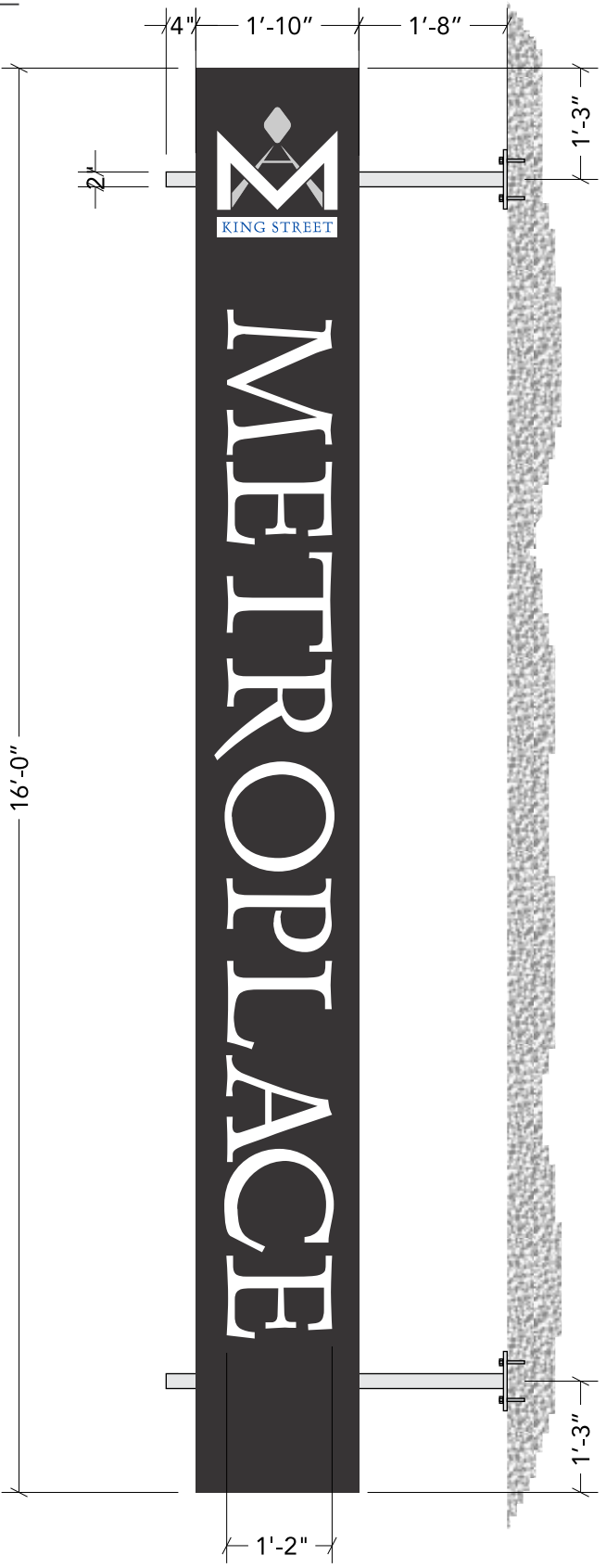
SIGN TYPE A

SIGN BLADE SIDE ELEVATION (TYP)

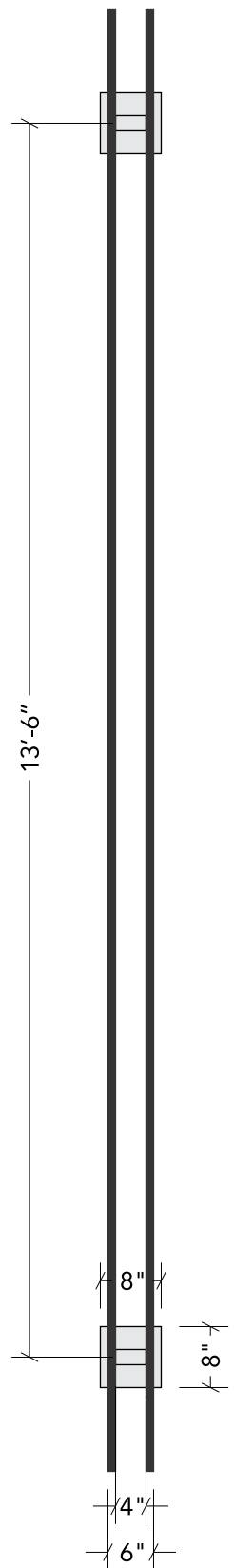
SCALE: 1/4" = 1'-0"



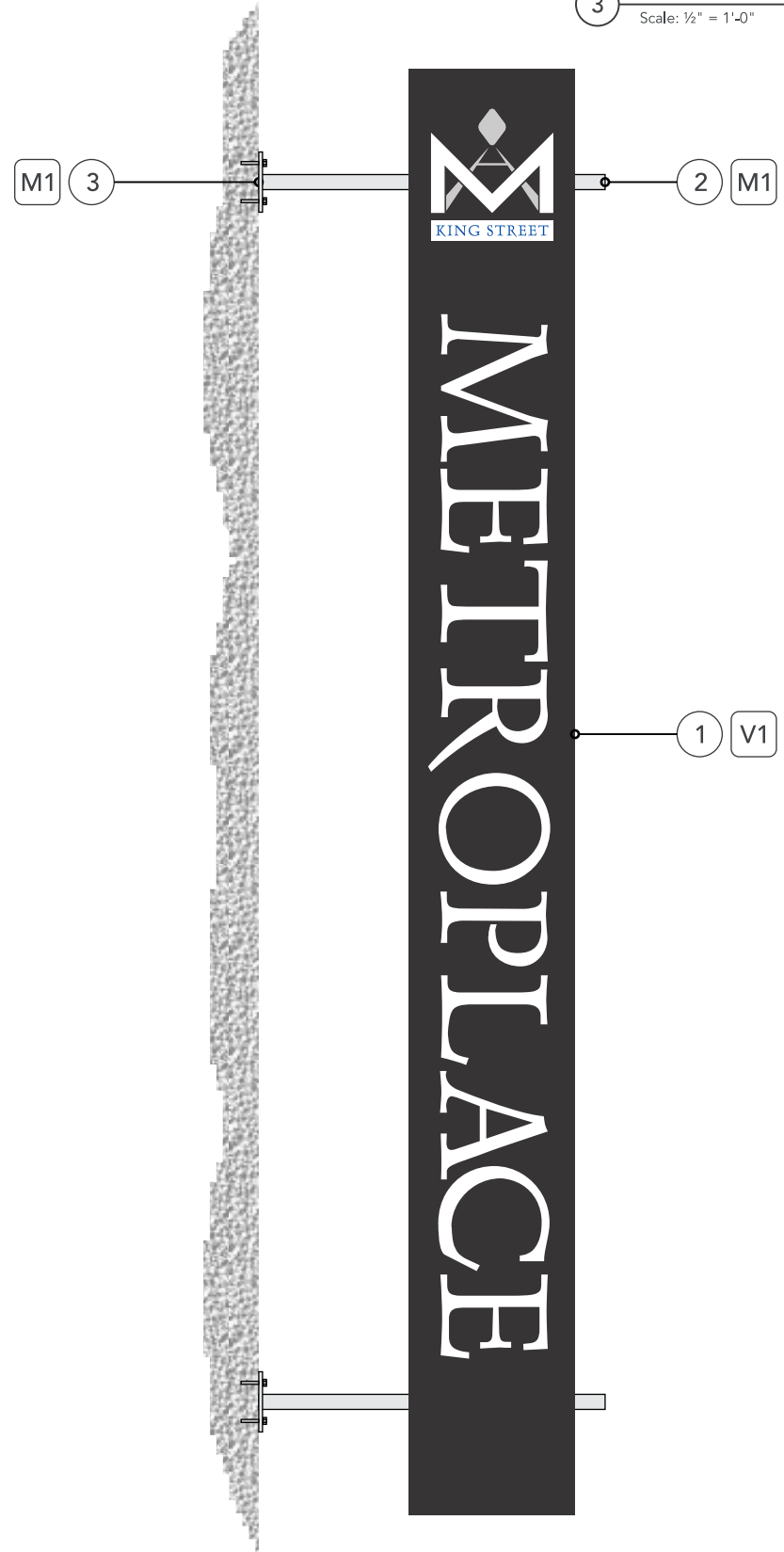
1 Flex face - Side A
Scale: 1/2" = 1'-0"



2 Flex face - Front View
Scale: 1/2" = 1'-0"



3 Flex face - Side B
Scale: 1/2" = 1'-0"



Specifications

- 1. 1"x1" square aluminum frame with digitally printed material stretched over frame.
- 2. 2"x4" polished stainless steel posts.
- 3. 8"x8" polished stainless steel mounting plates to be bolted with four (4x) 3/8"x4" sleeve anchor bolts into precast column cover.

Colors & finishes

- V1. Vinyl banner material
- M1. Polished stainless steel

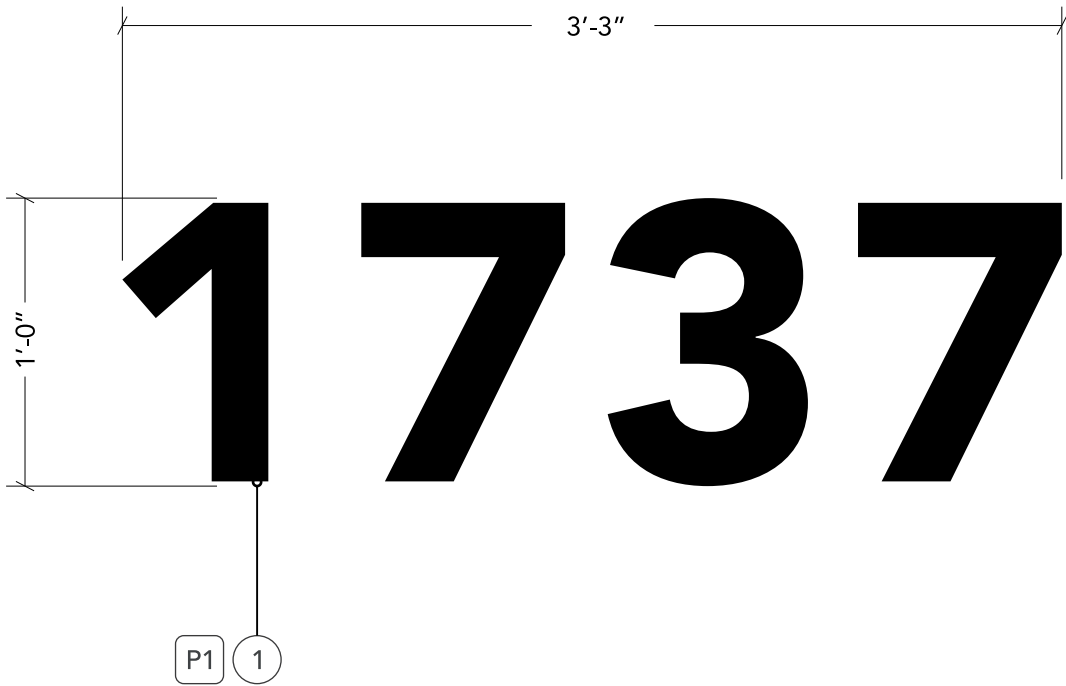


Specifications

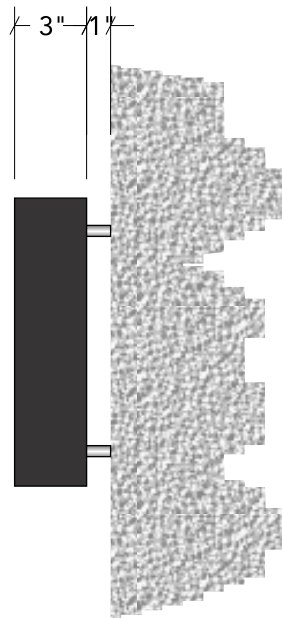
1. 3" deep fabricated aluminum channel numbers to be painted P1 and installed 1" offset from wall to provide halo illumination. Letters to be internally illuminated with White LED.

Font used: Avenir LT Std 65 Medium

1 Halo lit channel numbers - Front View
Scale: 1 1/2" = 1'-0"



2 Halo lit channel numbers - Side View
Scale: 1 1/2" = 1'-0"

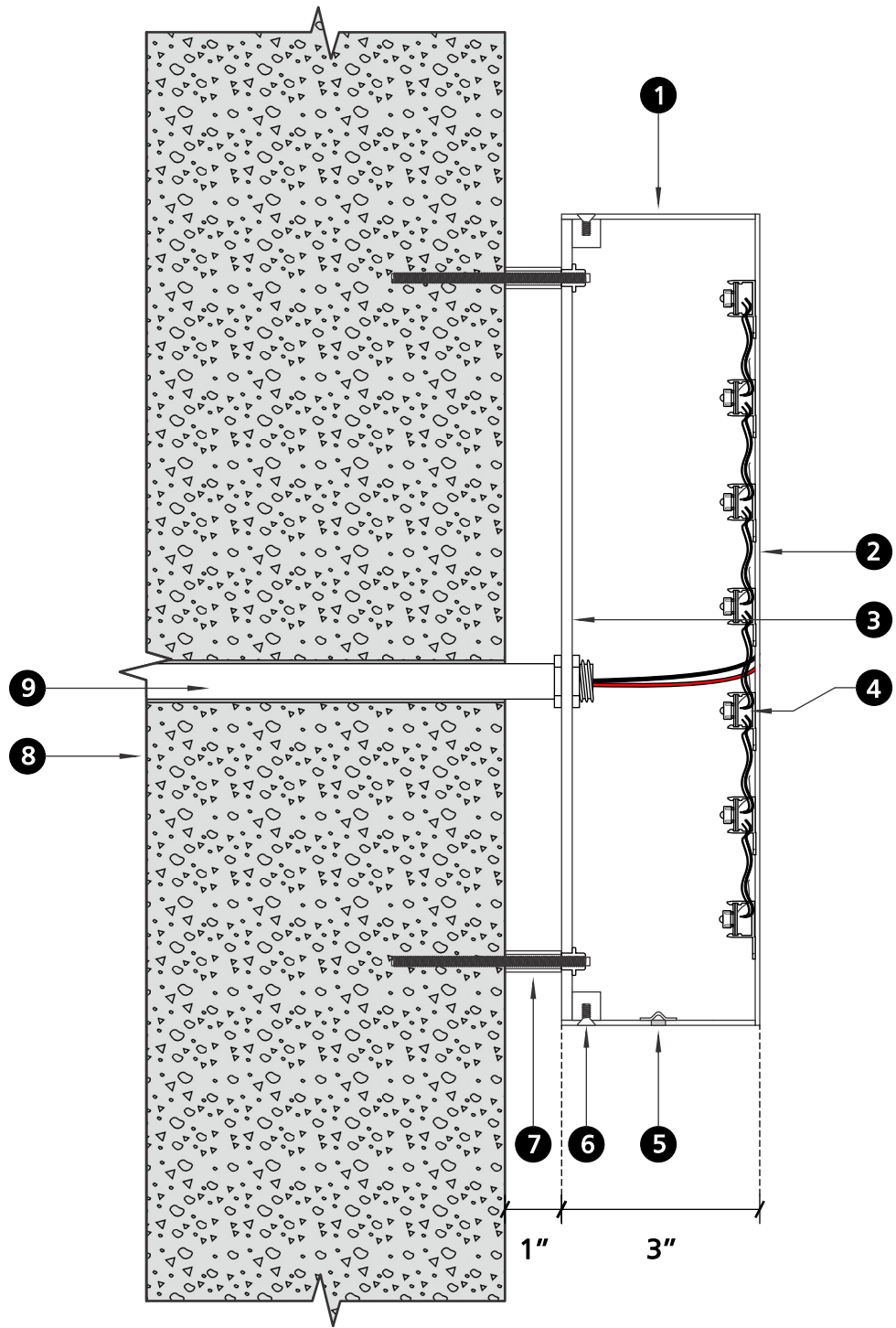


Colors & finishes

P1. Black



Halo-lit Channel Letters | Stud-Mount Side Section Detail



SPECIFICATIONS

- 1 Returns: .090" aluminum
- 2 Faces: .090" aluminum
- 3 Backs: 3/16" clear acrylic with 1/2" clear acrylic mounting blocks
- 4 Illumination: White LED modules attached to backside of faces
- 5 Weep holes: 1/4" diam. with covers
- 6 Fasteners: Countersunk screws through returns into acrylic mounting blocks (paint to match returns)
- 7 Hardware: Nutserts / SS threaded studs / spacers for 1" offset (paint to match existing wall)
- 8 Existing wall: precast
- 9 Electrical feed: From remote LED power supply
- 10 LED power supplies (not shown): Remotely located in metal electrical box with connection to primary feed (by others)

