

# **St. Stephen's & St. Agnes Upper School Expansion**

**1000 St. Stephen's Rd.  
DSUP#2018-00030**

**City Council  
February 20, 2021**



# Site Location



DSUP#2018-0030 | 1000 St. Stephen's Rd.



# Site Conditions



## Traffic Roundabout



## Southeast Corner



## Interior Courtyard



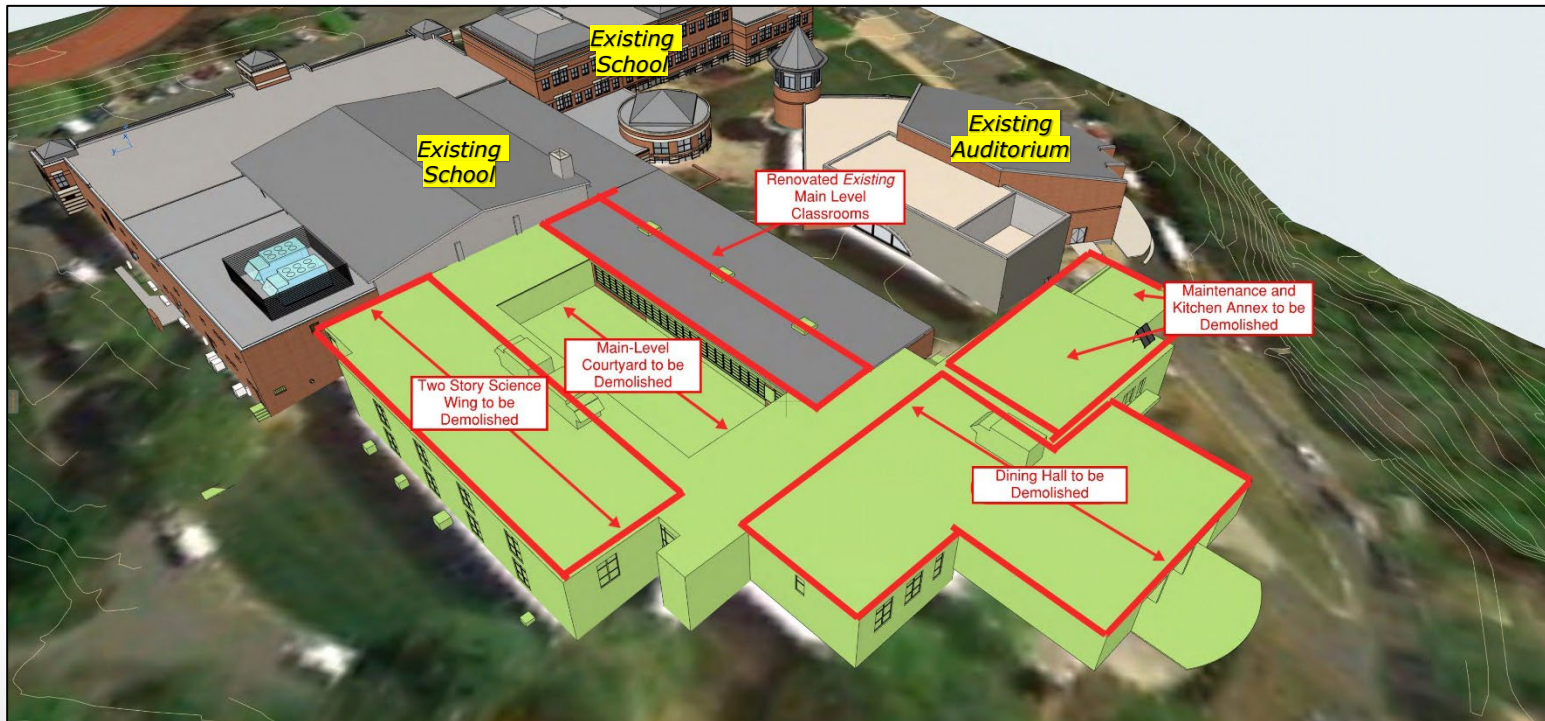
## Access To Public Street





# Project Requests

- An SUP to expand an existing private school and to increase enrollment from 480 to 520.
- An SUP to allow temporary classroom trailers.





# Project Locations



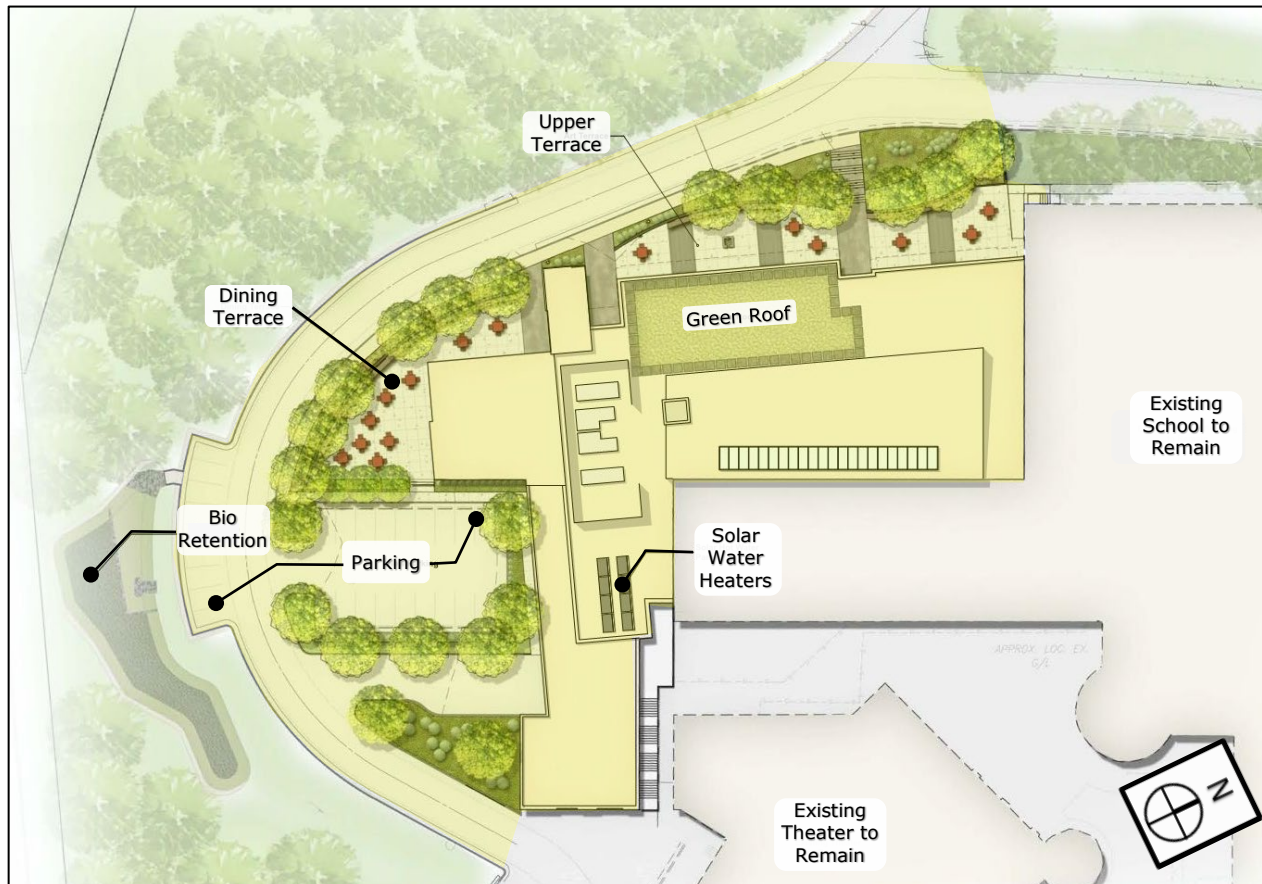
DSUP#2018-0030 | 1000 St. Stephen's Rd.





# Proposed Expansion

- 40-foot-tall addition to replace existing dining, classroom and maintenance wings.
- Bi-level courtyard and related improvements



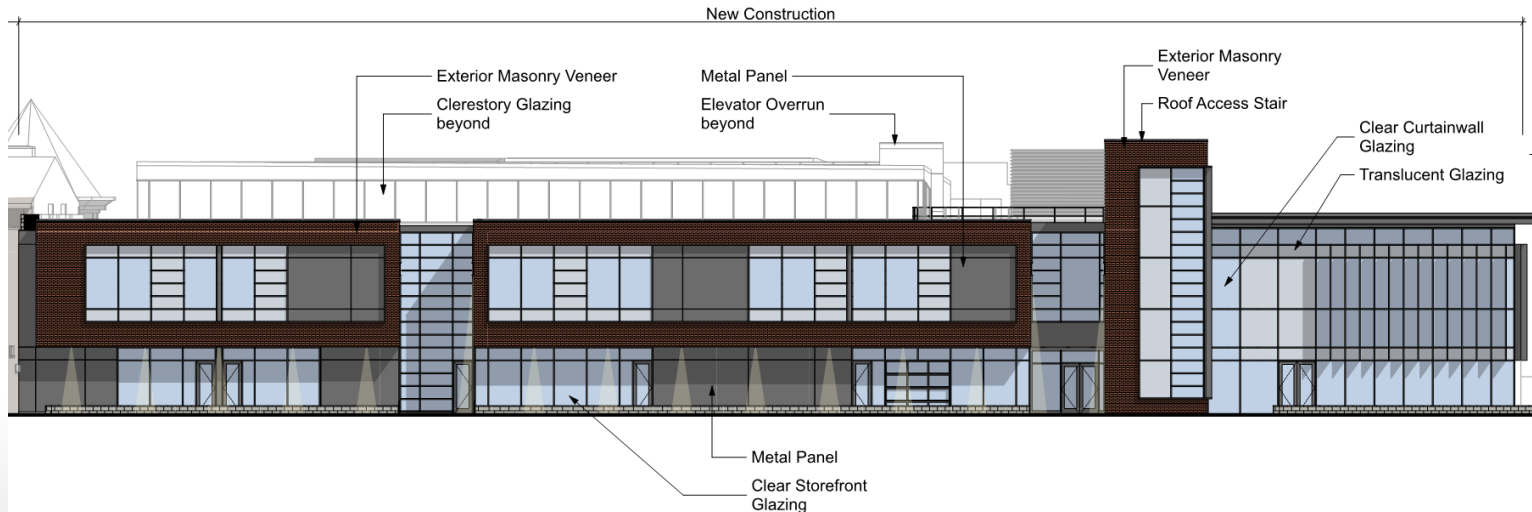
# Building Architecture



DSUP#2018-0030 | 1000 St. Stephen's Rd.

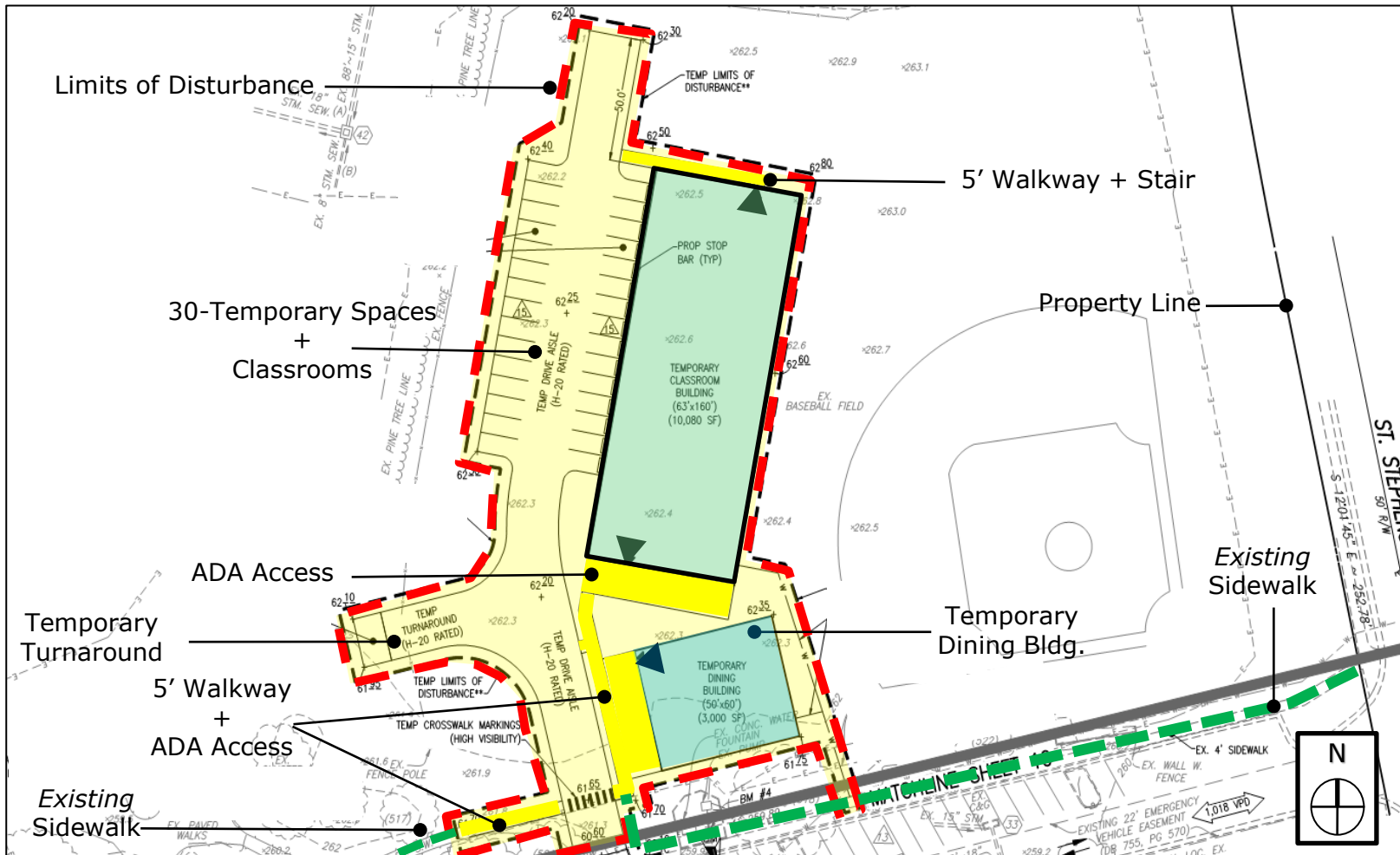


**Western Elevation and Rendering**



# Temporary Campus

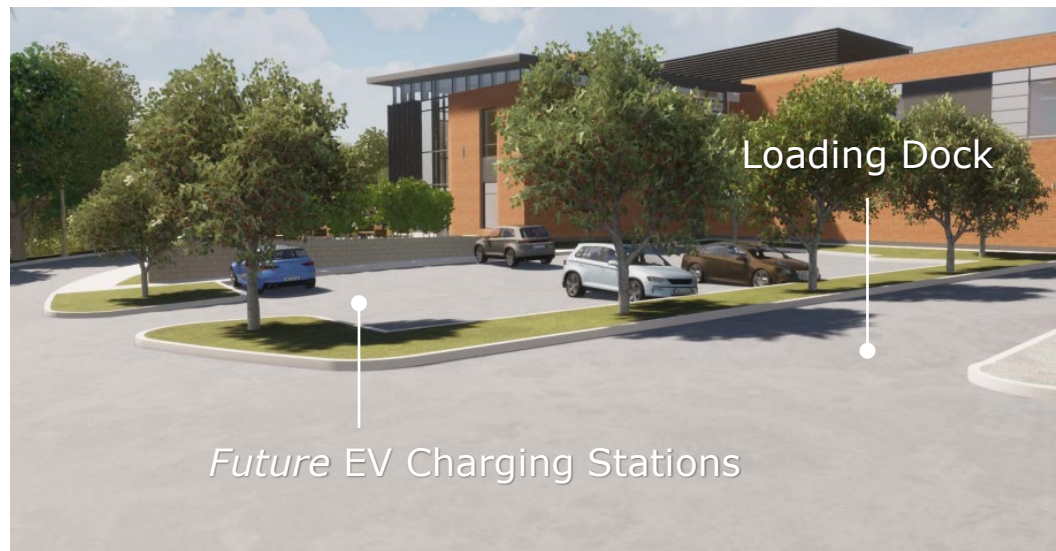
- Classrooms, dining hall, and parking.
- Serves school only during construction





# Master Plan Compliance & Green Building Highlights

- Continued “Institutional Use” as per the Small Area Plan
- 2009 Green Building Policy compliant
- x2 Electric-Vehicle charging stations
- Environmentally sensitive building systems including **Green Roof** and **Pitched Solar Water Heater Arrays**.



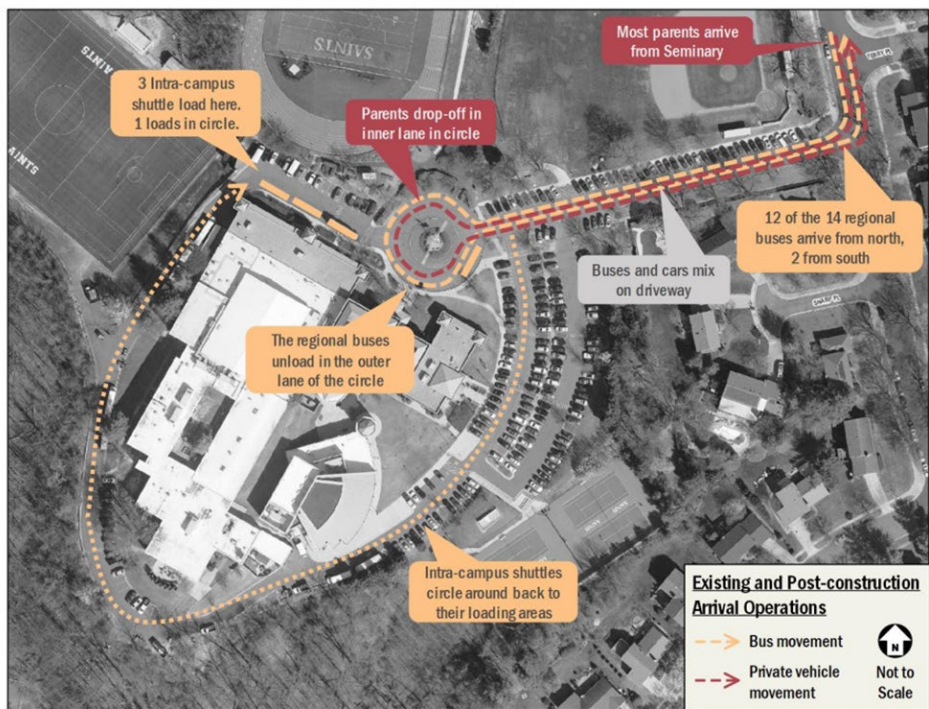
# Recommendation

- Staff recommends **APPROVAL** of the DSUP and associated requests.
- The Planning Commission recommended approval by a vote of 7 – 0, with no abstentions.

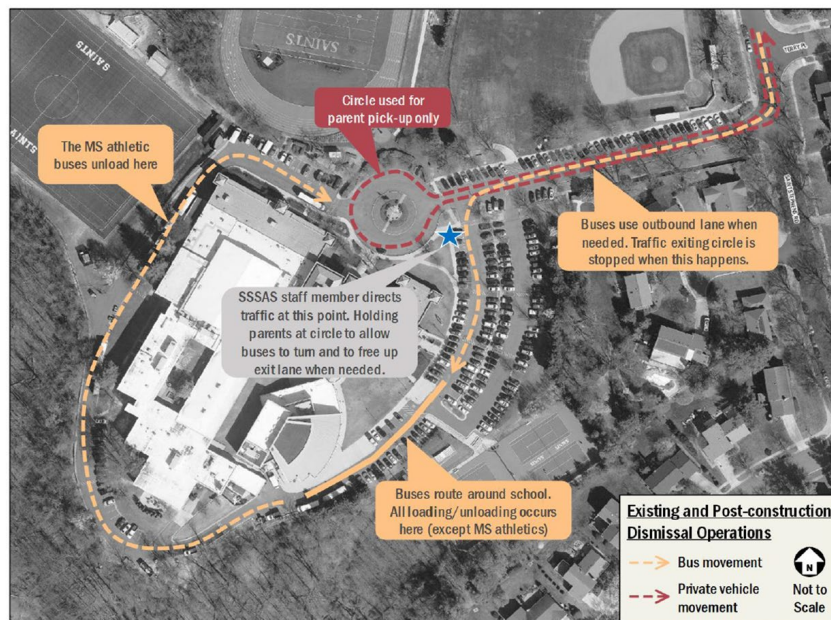




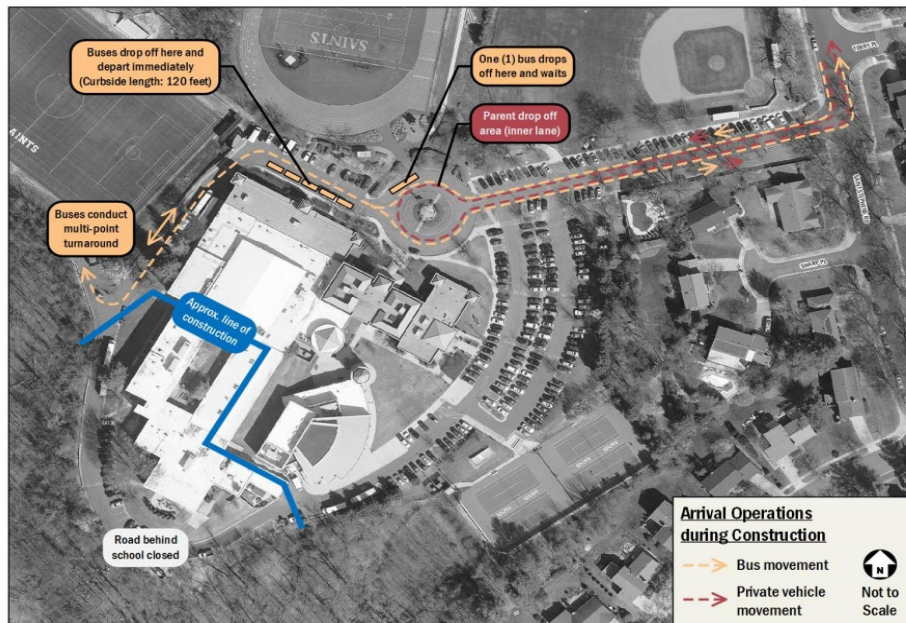
## Existing and Post-Construction Arrival Operations



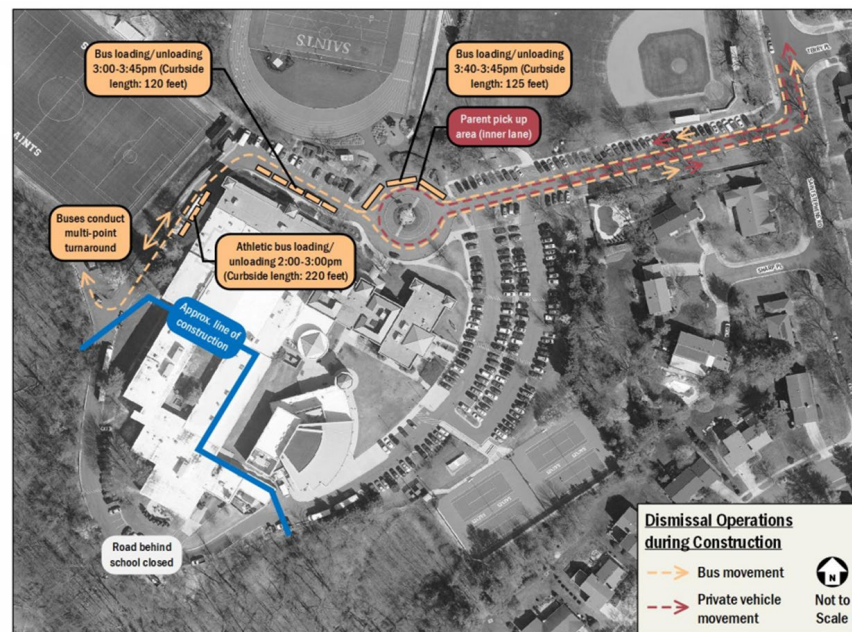
## Existing and Post-Construction Dismissal Operations



## Arrival Operations During Construction



## Dismissal Operations During Construction





## Existing Parking Areas

