



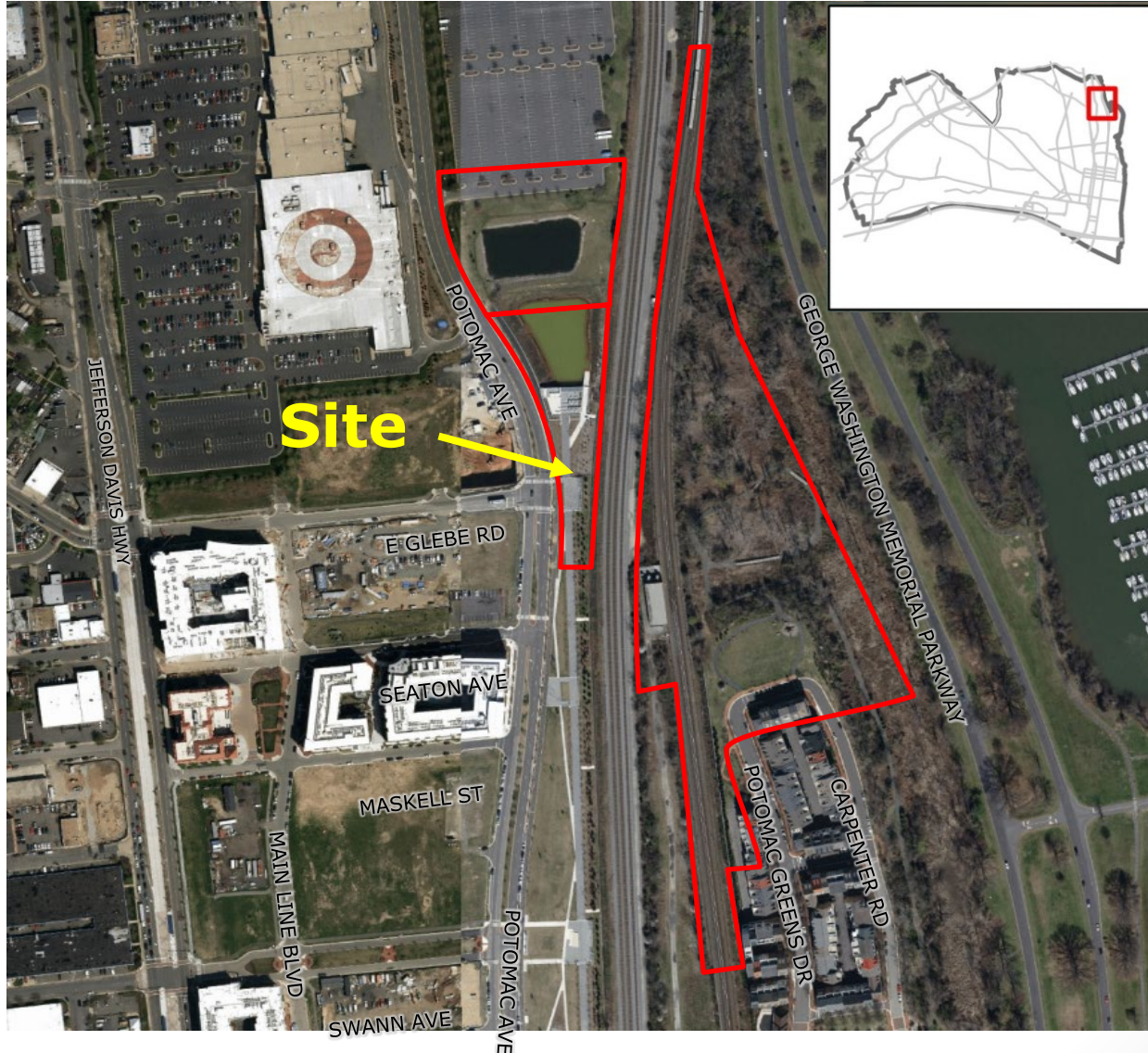
Potomac Yard Metrorail Station Amendment

DSUP #2020-10020

Planning Commission

November 5, 2020

Project Location & Background



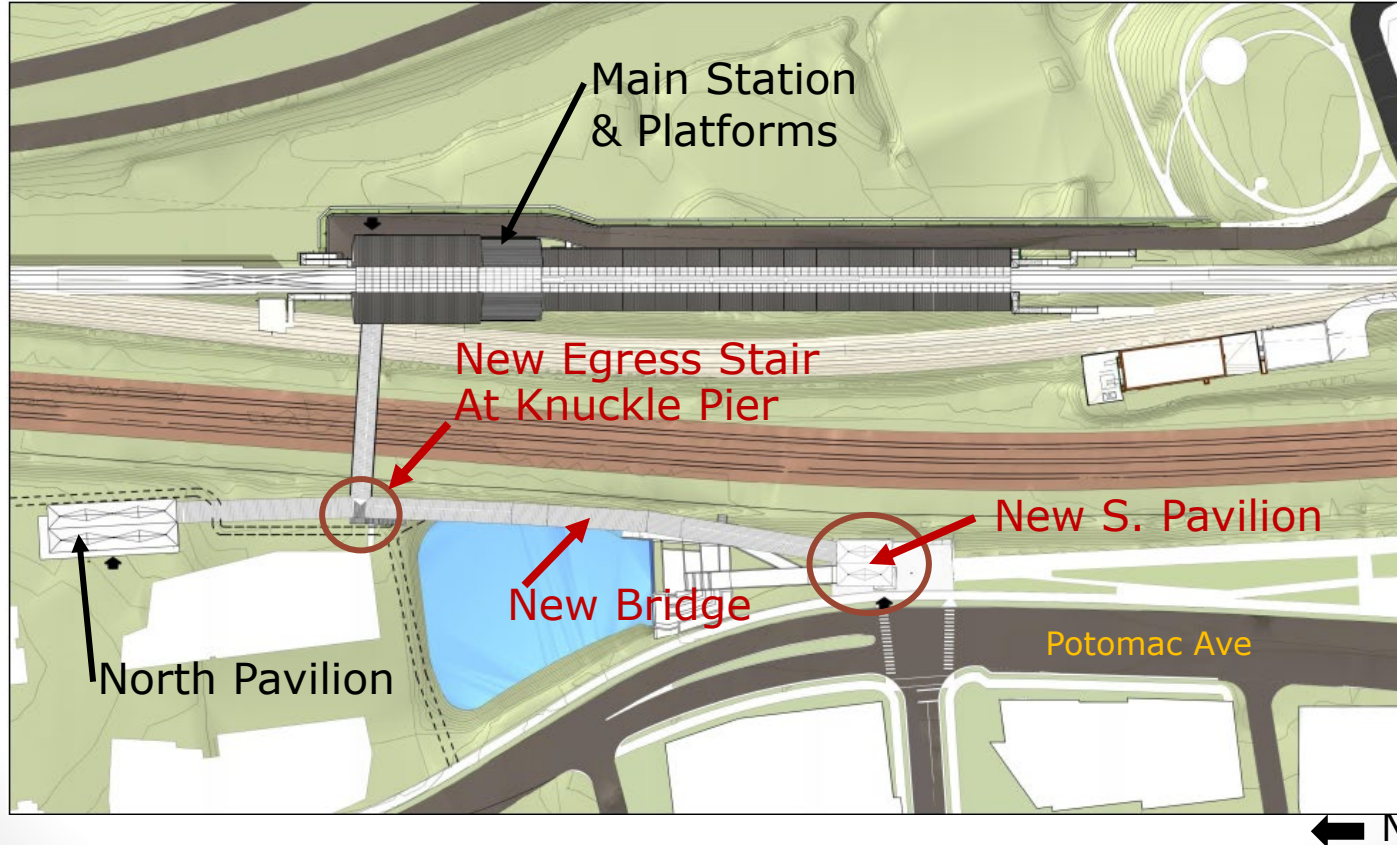


Project Requests

- DSUP to amend Amendment to Metrorail station to add enhanced south access at East Glebe Road
- Subdivision Plat creating new parcel for the south access Pavilion

Proposed Amendments

- ✓ New 2,373 sq. ft. South Access Pavilion
- ✓ Elevated pedestrian bridge connecting to Station
- ✓ Emergency Egress Stair at Knuckle Pier



Building Design:

Before / After

2018
Approval



Proposed
Amendment



South Pavilion Design:

At Glebe Road Looking North



South Pavilion Design:

Looking Northeast with Bridge at left

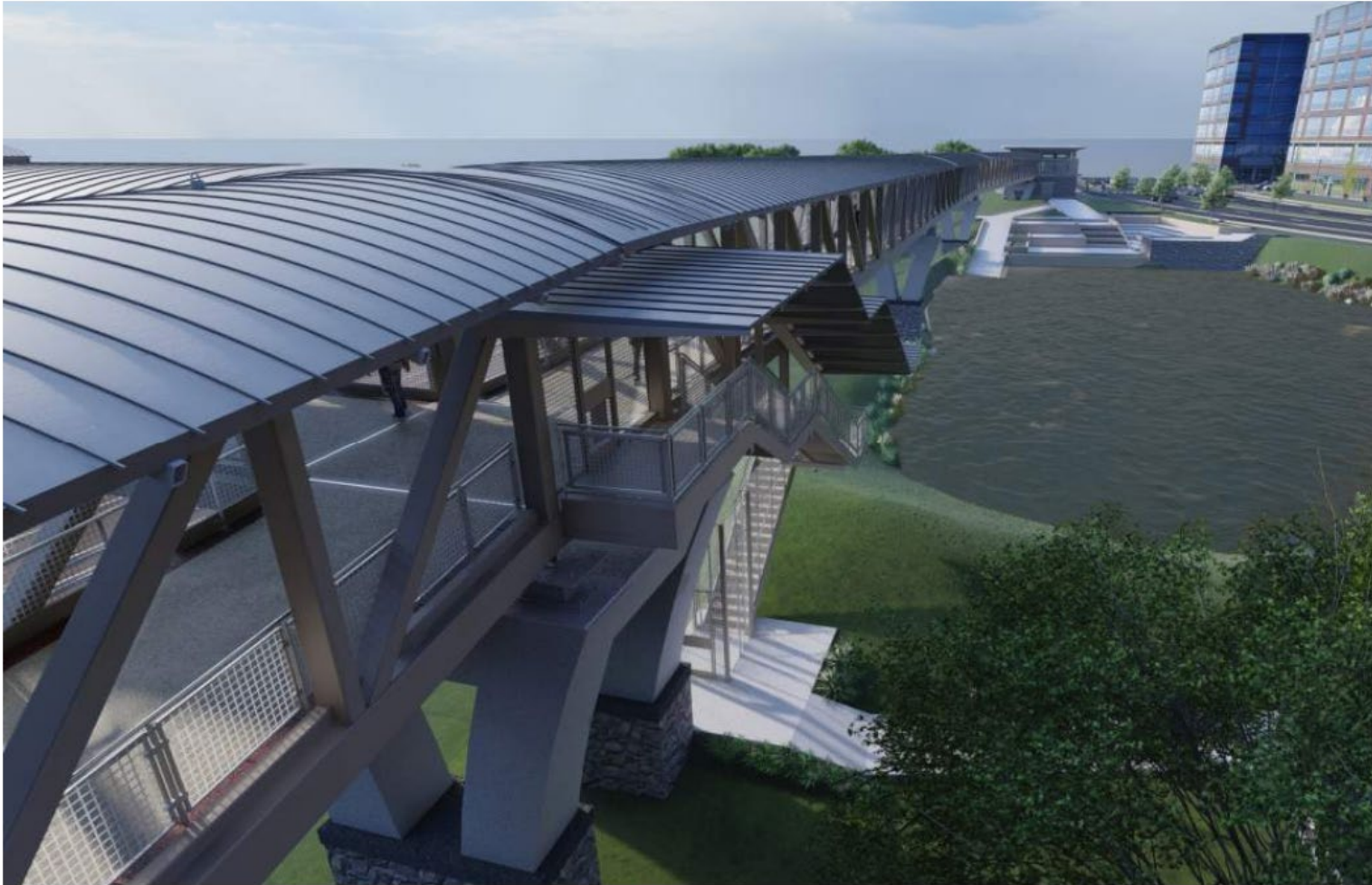


PY Metrorail Station

DSUP2020-10020

Bridge & Egress Stair Design:

Bridge and Emergency Egress Stair



Subdivision

- Consists of three new lots

New Parcels	Zoning	Lot Area	Use
612B-1	UT - Utility	0.64 acres	Metrorail Station Access
612B-2	UT - Utility	1.19 acres	Park
612B-3	CDD#10 / UT - Utility	11.17 acres	Park

Community Outreach

Key Community Meetings

Date	Meeting / Organization
January 27, 2020	PYMIG Meeting
February 24	PYMIG Meeting
May 12 & 29	PYMIG Update by email
June 29	PYMIG Update by email
July 29	PYMIG Update by email
August 31	PYMIG Update by email
September 2	BAR Concept Public Hearing
September 27	PYMIG Virtual Meeting
October 21	BAR Certificate of Appropriateness Public Hearing
October 26	PYMIG Meeting
November 5	Planning Commission Public Hearing
November 14	City Council Public Hearing

Next Steps

- Amendment as approved would proceed to approval of the Final Site Plan;
- Building Permit Review and approval;
- Construction;
- Southwest access opens in Spring 2022.





Conclusion

Staff recommends **approval** of the DSUP amendment and subdivision plat subject to compliance with all applicable codes and conditions.