



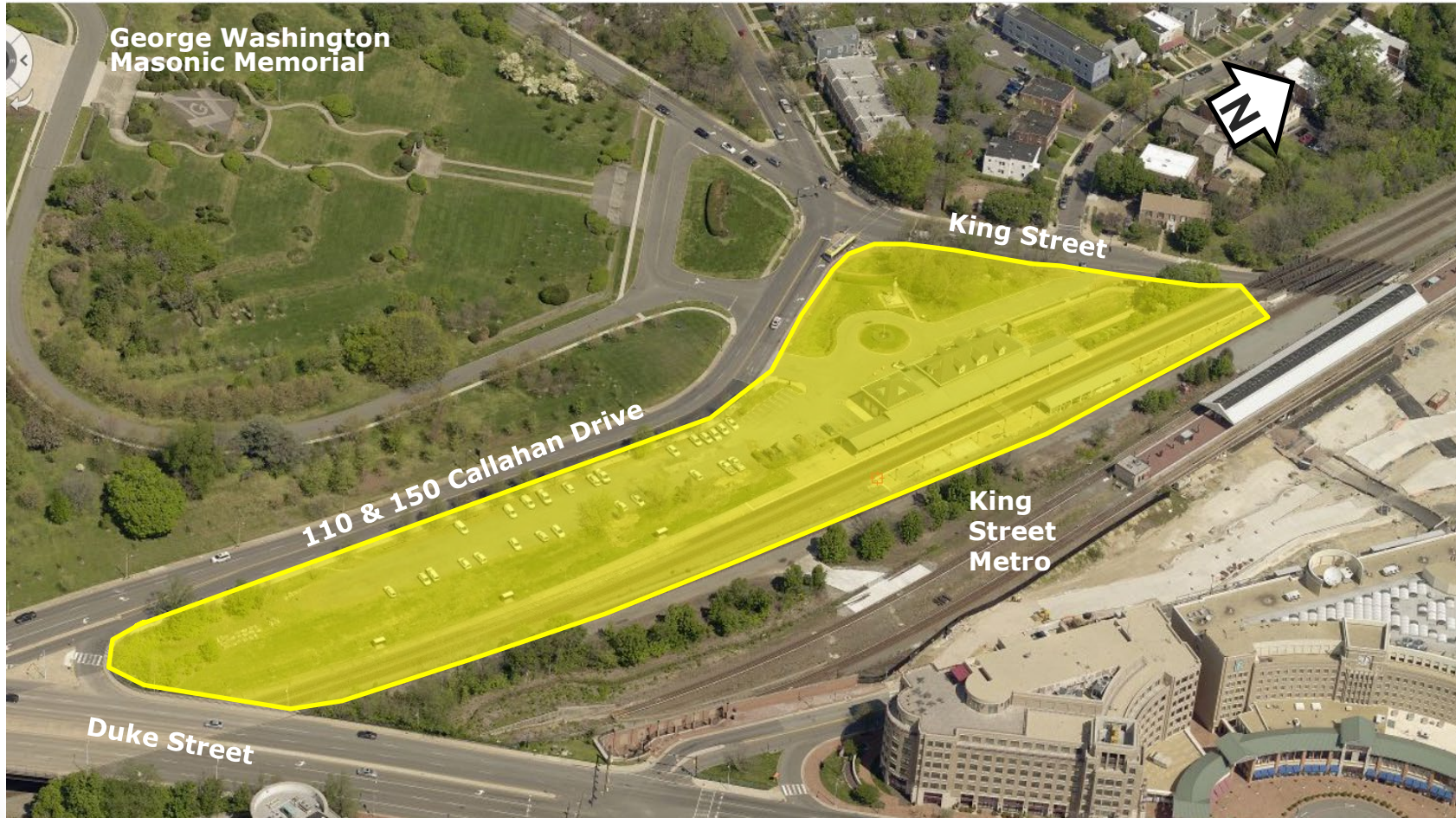
**VRE Pedestrian Improvements
Union Station
110 & 150 Callahan Drive
Development Site Plan #2019-0031**

Planning Commission
September 1, 2020

Project Location



VRE Station Improvements - DSP#2019-0031

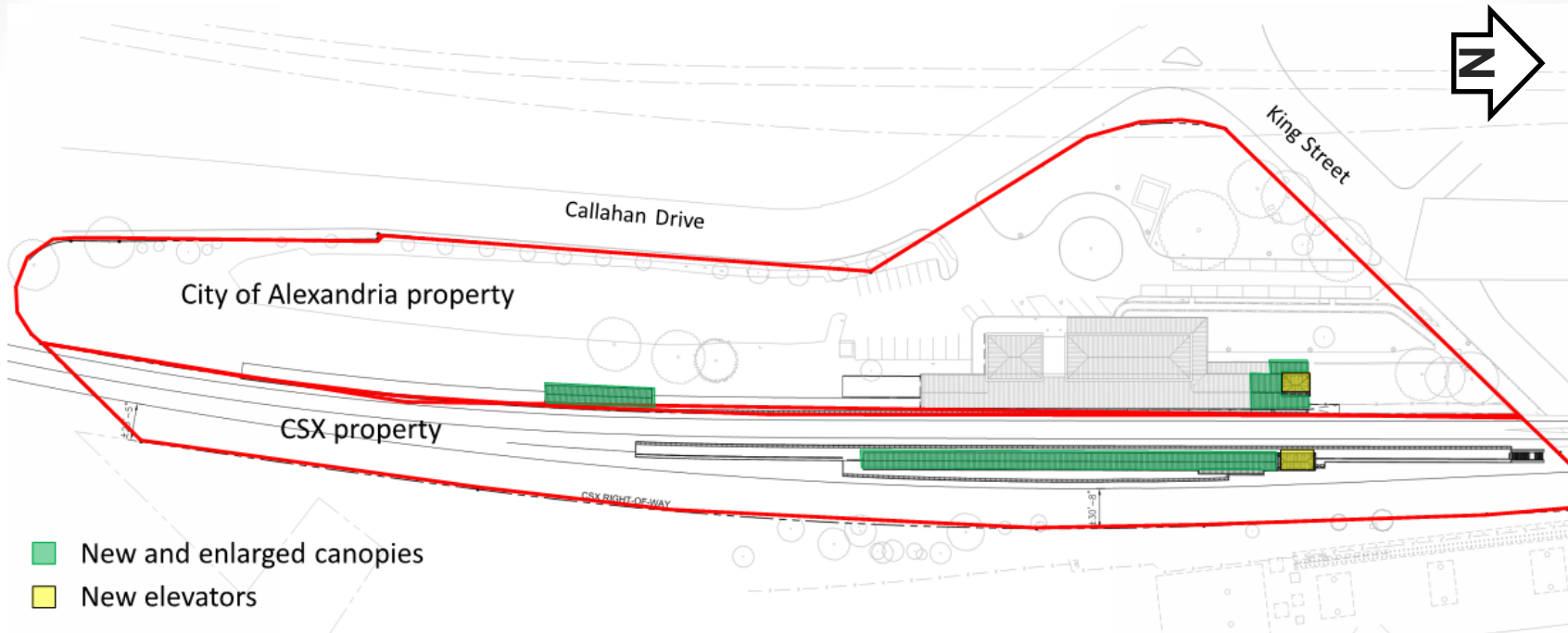


Background

- 2015: pedestrian safety improvements and King Street Metro connection
- Connection between stations was eliminated
- 2019/2020: current plan will utilize existing historic tunnel under the tracks



Site Plan



Platform Improvements



At-grade track crossing



Movable stools to reach train doors

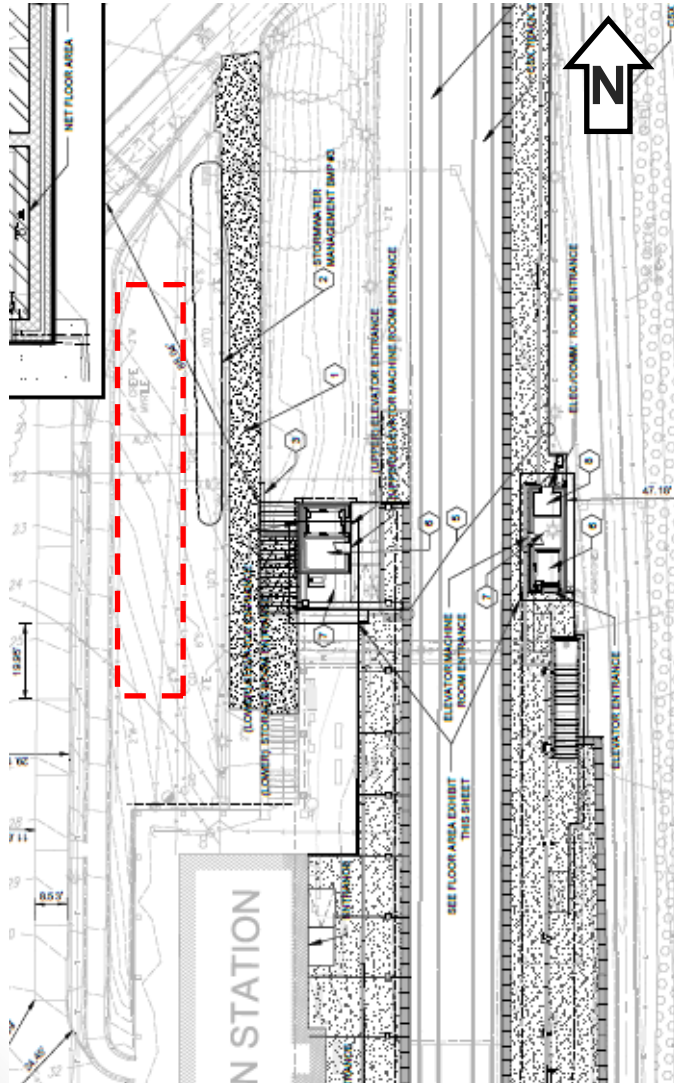
Elevators & Canopies



- Two elevators at the north end connected by the tunnel
- Canopy extensions to the new (west) elevator and over the stair
- New larger canopy over the east platform
- New canopy to replace existing shelters



Crown Coverage Modification



- Two canopy trees will be planted
- Contribution to the City's Urban Forestry Tree Fund



Outreach



Community Meetings

Spring 2018 & 2019	<i>Meet the Management</i> events at the station
Monthly	Applicant-hosted online forum

City Meetings

July 15 , 2016	Board of Architectural Review (BAR) information presentation
June 3, 2020	Board of Architectural Review (BAR) information presentation

Conclusion

Staff recommends **approval** subject to compliance with all applicable codes and the staff recommendations.

