



June 10, 2019

William Schuyler, Chair  
Traffic and Parking Board  
Alexandria, VA

**Re: Environmental Policy Commission Input on Seminary Road Complete Streets Project**

Dear Mr Schuyler and Members of the Traffic and Parking Board:

The Environmental Policy Commission (EPC) understands that you will be reviewing the City's Seminary Road Complete Streets Project and formulating your recommendation to the City Council regarding that project, at your June 24 Public Hearing.

The EPC received a presentation from City staff on the project at our Working Session on June 3. Following that presentation, we discussed the three Alternatives originally presented as well as the Staff Recommendation that was presented at a public meeting on May 30. We considered the alternatives in the context of the City's environmental<sup>1</sup> and transportation<sup>2</sup> policies. These City policies direct that our streets prioritize access for people who walk, bike and take transit to meet City objectives for sustainability, mobility, and public health. Alternative 3 is clearly the most consistent with these policies and objectives. Alternative 3's reconfiguration to reduce excessive speeds and enhance safety with center left-turn lanes, pedestrian refuge islands, and bike lanes will encourage alternative modes of transportation as called for in these policies. Further, Seminary Road was identified as an extremely high-priority corridor (#9 of 96) in the Transportation Master Plan's Pedestrian and Bicycle Chapter (April 2016).

The 2016 King Street project demonstrated that a similar reconfiguration can provide important safety benefits (e.g. 50% reduction in crashes and 18% reduction in vehicle speeds) with no adverse impacts. While that project was criticized before its implementation, it is now recognized as an effective and appropriate complete streets project. It represents an example of how projects that adhere to current policies can quickly gain favor within our community.

In summary, we concluded that Alternative 3 is most consistent with existing City environmental and transportation policies, and that Alternative 3 best meets project goals and objectives. The EPC unanimously voted to recommend that the City implement Alternative 3, and we urge the Traffic and Parking Board to adopt and forward that recommendation to the City.

Thank you for your consideration of this recommendation. Sincerely,

Praveen Kathpal  
Chair  
Alexandria Environmental Policy Commission

---

<sup>1</sup> City of Alexandria Draft Environmental Action Plan 2040, Transportation Chapter

<sup>2</sup> City of Alexandria 2016 Transportation Master Plan – Pedestrian and Bicycle Chapter



Alexandria Transportation Commission  
301 King Street  
Alexandria, VA 22314

[www.alexandriava.gov](http://www.alexandriava.gov)

Phone: 703.746.4025

Traffic and Parking Board  
301 King Street  
Alexandria, VA 22314

June 21, 2019

Re: Seminary Road Complete Streets Project

Dear Chairman Schuyler and Members of the Alexandria Traffic and Parking Board:

At its June 19, 2019 meeting, the Alexandria Transportation Commission received an update from staff on the Seminary Road Complete Streets Project. The Transportation Commission also heard from several community members on the topic during its open public hearing period. Those community voices - people who walk, bike, and drive along this stretch of Seminary - were unanimous in opposition to staff's recommendation, and in their plea that the City pursue "Alternative 3", which they felt among all presented alternatives best achieved the safety needs for themselves and their families. The Commission discussed these comments from the community as well as the discrepancies members saw between staff's recommendation and adopted City transportation plans and policies, including the Transportation Master Plan, the Vision Zero Action Plan, and the Complete Streets Policy.

We understand that the staff recommendation for this project will be presented to you for consideration at your hearing on Monday, June 24, 2019. In this letter we wish to raise to your attention a few key conflicts with City plans so that you may weigh them in your consideration of the alternatives before you.

- The stated goals of this Seminary Road Complete Streets Project are to improve safety and accessibility for all users, improve facilities for people who walk, bike, ride transit, or drive cars, and to implement previously adopted plans, policies, and study recommendations. However, the staff recommendation does nothing to improve facilities for people who bike, and it does little to ameliorate the dangerous proximity between people on the sidewalk and fast moving cars. Alternative 3 is more consistent with each of these goals.
- In the Transportation Master Plan (2008), "the City of Alexandria envisions a transportation system that encourages the use of alternative modes of transportation, reducing dependence on the private automobile" and the City commits to "promote a balance between travel efficiency and quality of life, providing Alexandrians with transportation choices, continued economic growth, and a healthy environment." Staff's recommendation explicitly prioritizes maintaining existing car travel patterns and does little to increase choice or reduce dependence on the private automobile.
- In the Complete Streets Policy (2011, reenacted in 2014) "every street project shall incorporate to the extent possible Complete Streets infrastructure sufficient to enable reasonable safe travel along and across the right-of-way for each categories of users" and "if the safety and convenience of users can be improved within the scope of resurfacing, restriping, or signalization operations, such projects shall implement Complete Streets infrastructure to increase safety for users." Alternative 3 would improve the safety of more categories of users along more road than the staff recommendation.

- The Pedestrian and Bicycle Master Plan (2016) recommends Seminary Road as one of the City's top 10 priority on-street enhanced bicycle facilities and one of the top 10 sidewalk projects, and yet the staff recommendation offers no enhanced bicycle facility at all out of this repaving project.
- The Vision Zero Action Plan (2017) prioritizes safety treatments to eliminate fatal and severe injury crashes, especially by reducing speed (a key factor in crash morbidity and mortality), but the staff recommendation lacks the necessary treatments to substantively reduce speed or crashes.

The Transportation Commission believes that Alternative 3 better achieves the letter and spirit of these citywide plans. The Transportation Commission respectfully requests that the Traffic and Parking Board recommend Alternative 3 to City Council for approval, rather than staff's recommendation.

The Transportation Commission was created by Council to advocate and promote the development of balanced transportation systems in the City through oversight of the Transportation Master Plan. We appreciate your consideration of this input on the project.

Sincerely,



Melissa McMahon  
Vice Chair, Alexandria Transportation Commission

cc: Alexandria Transportation Commission  
Yon Lambert, Director, T&ES

## Correspondence from AFD regarding Alternatives

**From:** Corey Smedley

**Sent:** Friday, June 21, 2019 6:19 PM

**To:** Christine Mayeur

**Cc:** Michael Cross; Bob Garbacz; Robert Dube; Yon Lambert; Hillary Orr; William Schuyler; Maurice Jones

**Subject:** Seminary Road Complete Streets: Emergency Apparatus Concerns

Ms. Mayeur:

### Seminary Road Project

Deputy Chief Cross has advised that your response mischaracterizes the agreement from Monday's meeting. The Fire Department's concerns were not satisfied because it was designed per the Complete Streets Design Guidelines. The Fire Department could accept certain elements of the proposal over the entire span of the project with some modifications, specifically, one 10' eastbound lane is accompanied by a 7' painted pavement buffer lane; the 6' raised concrete median between the eastbound and westbound lanes is limited to 3 areas with bus stops as a compromise for pedestrian safety; and the 10' travel lanes would get widened to **10½" wide as a compromise**.

Further, an Option 3 was presented that depicted the following: 1) a 11' single eastbound lanes; 2) a single westbound lane; 3) a 10' center turn lane; and 4) 6' bike lanes outside of both travel lanes. This option had been removed from consideration based on Alexandria Hospital input that it may not be the best configuration for emergency vehicles. This option actually provides the 11' travel lanes preferred by the fire department, yielding space for emergency vehicles by pulling to the right in the bike lanes, and the center lane can be used for emergency vehicle passing without crossing into oncoming traffic. The Fire Department would have preferred Option 3 configuration to the current proposal.

### Complete Streets Design Guidelines

Maurice Jones advises that he had limited input on the Complete Streets Design Guidelines. He attended a couple of meeting and provided focused input on turning radius and emergency vehicle easements issues. The Fire Department has not opined on the acceptable street width, and we object to travel lanes less than 11' in width. Our fire apparatus is 8½' wide at the body and 9¾' wide at the mirrors, which leaves only 1½" on either side of the vehicle to prevent a mirror strike with another truck, bus or emergency vehicle.

City Code Sec 4-2-12, Appendix D(7) provides emergency vehicle easements with a minimum of 22' wide. This provide two 11' wide lanes for fire apparatus to be able to approach, pass and position for emergency options. It rather hard to imaging that our shopping centers and apartment complexes are designed for 11' wide travel lanes (22' wide emergency vehicle easements), but our street are being designed for only 10' wide lanes.

I remain available to discuss further to ensure the goals of the project and public safety requirements are met. As the change in the leadership will occur in the next couple of days and to ensure a smooth transition with our stakeholders, I am asking that all correspondence go directly through the office of the Fire Chief and a response will be returned in the same manner. Thank you.

Corey

Corey Smedley  
Assistant Chief/Emergency Management Coordinator  
City of Alexandria, Virginia

**From:** Christine Mayeur  
**Sent:** Wednesday, June 19, 2019 11:10 AM  
**To:** Michael Cross  
**Cc:** Bob Garbacz ; Robert Dube ; Corey Smedley; Yon Lambert; Hillary Orr ; William Schuyler  
**Subject:** RE: Seminary Road Complete Streets: Emergency Apparatus Concerns

Good Morning Deputy Chief Cross,

Thank you for meeting with Hillary, Chris, and I on Monday. Per our discussion, I'm confirming that the Fire Department has no issue with the Staff Recommendation as it was designed per the Complete Streets Design Guidelines. Fire/EMS was a key team member in crafting the Complete Streets Design Guidelines document, which has guided the design of City projects since 2016.

Thank you again for meeting with us and discussing your comments on the proposal.

Best,  
Christine

Christine E. Mayeur, AICP  
Complete Streets Program Manager  
Transportation & Environmental Services | Transportation Planning

**From:** Christine Mayeur  
**Sent:** Wednesday, June 12, 2019 3:08 PM  
**To:** Michael Cross  
**Cc:** Bob Garbacz; William Schuyler; Robert Dube; Corey Smedley ; Hillary Orr  
**Subject:** RE: Seminary Road Complete Streets: Emergency Apparatus Concerns

Hi Deputy Chief Cross,  
I think it would be best to meet about these issues you've brought up to discuss the reasoning behind the widths and limitations from a design and ADA access perspective. Do you have any time on Friday or next week to discuss with our team?

Christine E. Mayeur, AICP  
Complete Streets Program Manager  
Transportation & Environmental Services | Transportation Planning

On Wednesday, June 12, 2019, 3:02:03 PM EDT, Michael Cross wrote:

Ms. Mayeur:

I wanted to reach out to provide input/comments from the fire department on the recommended proposal for Seminary Road between N. Howard St and N. Quaker Lane. I'd like to point out that this section of Seminary Road is a heavily used road for emergency vehicles for transporting patients to Alexandria Hospital Emergency Department, and responding to calls in the east end and downtown sections of the City from Alexandria Hospital at 4320 Seminary Rd and Fire Station 206 at 4609 Seminary Rd.

These comments are based graphics in the PowerPoint presentation from the public meeting #3 posted on the project website.

### **Concern #1 – Proposed 10' Travel Lane Widths**

- The fire department requests lane widths no less than 11'.
- The body width on most of our apparatus is 101" wide (8' 5"), plus mirrors about another 12" per side, gets our overall width to about 10' 5"
- Most trucks and buses, including school buses, are about 10' 5" width at mirrors
- Suggestion - Howard to St Stephens:
  - Reduce both sharrow lanes to 10', which actually provides a 12' lane when adding the 2' curb gutter with the 10' sharrow lane
  - Widen both travel lanes to 11'
- Suggestion – St Stephens to Zabrizkie (w/out 6' median)
  - Reduce both buffer lanes to 6'
  - Widen both travel lanes to 11'
- Suggestion – St Stephens to Zabrizkie (w/ 6' median at bus stops)
  - Reduce median to 5'
  - Eastbound travel lane is already 12' with the 2" curb gutter with the 10' turn lane
  - Widen westbound travel lanes to 11'
- Suggestion – Zabrizkie to N Quaker
  - Reduce westbound sharrow lane to 10', which actually provides a 12' lane when adding the 2' curb gutter with the 10' sharrow lane
  - Widen westbound travel lanes to 11'
  - Eastbound right turn lane is already 12' with the 2" curb gutter with the 10' turn lane

### **Concern #2 – 6' Median (at bus stops St Stephens to Zabrizkie)**

- Adding the 6' median creates a "pinch point" that prohibits east bound traffic from yielding and emergency vehicles from safely passing during emergency responses
  - Pedestrians using the median as a refuge point crossing the road would be especially endangered when emergency vehicles pass
  - Medic Unit routinely respond to calls from Alexandria Hospital ED to the east end and downtown section of the City using Seminary Road.
  - Fire Station 206 at 4609 Seminary Rd respond to the east end and downtown section of the City using Seminary Road., especially the medic unit, rescue squad and battalion chief.
- Suggestion
  - Eliminate the 6' median

### **Concern #3 – One Eastbound Travel Lane (St Stephens to Zabrizkie)**

- Narrowing the road from 4 lanes to 3 lanes, by making only 1 eastbound sharrow lane will negatively impact emergency responses along a heavily used emergency response route for hospital and fire station travel.

- One of the most dangerous emergency driving conditions is driving in the opposite (wrong direction) lane of traffic
- Medic Unit routinely respond to calls from Alexandria Hospital ED to the east end and downtown section of the City using Seminary Road.
- Fire Station 206 at 4609 Seminary Rd respond to the east end and downtown section of the City using Seminary Road., especially the medic unit, rescue squad and battalion chief.
- Suggestion
  - Maintain the 4 travel lanes in this approximately 2,500' section of road.

#### **Concern #4 – Left Turn Lane from Westbound Seminary Rd to Southbound N. Howard St**

- The drawings do not show a turn lane for traffic turning from westbound Seminary Rd onto southbound N. Howard St to access Alexandria Hospital
- This turn lane provides additional space for emergency vehicles to make turns when transporting to or responding to the next call from Alexandria Hospital ED
- Suggestion
  - Include a turn lane from westbound Seminary Rd onto southbound N. Howard St.

Please feel free to contact me directly to discuss any of these comments/suggestions.

Thank you,

**Michael Cross, Deputy Fire Chief**

Support Services | Logistics, Information Technology & Capital Projects

**Alexandria Fire Department**

900 Second Street

Alexandria, VA 22314





## Alexandria Bicycle and Pedestrian Advisory Committee (BPAC)

June 12, 2019

Chairman William Schuyler, Vice Chair James Lewis and Traffic and Parking Board members,

I am writing as Chair of the Alexandria Bicycle and Pedestrian Advisory Committee (BPAC) to ask that you apply your technical expertise to the Seminary Road Complete Streets project and recommend re-configuration plans that meet project goals and that prioritize safety.<sup>1</sup> BPAC's recommendations are provided below and in the attached pages for your consideration.

Goal #1: Improve safety and accessibility for all users.

- Recommendation: Apply proven and appropriate traffic calming to Seminary Road between N. Howard Street and N. Quaker Lane to achieve safe speeds and reduce crashes.

Goal #2: Improve facilities for people who walk, bike, ride transit or drive cars

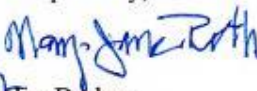
- Recommendation: Provide facilities afforded by Alternative 3 for all users

Goal #3: Implement previously adopted plans, policies, and study recommendations

- Recommendation: Implement applicable policies, including the Transportation Master Plan, Environmental Action Plan, Complete Streets Policy, and the Central Alexandria Traffic Study

More detailed recommendations are provided in the attached pages.

Respectfully,

*for*  *Vice Chair Pedestrians*  
Jim Durham  
Chair, Alexandria Bicycle and Pedestrian Advisory Committee

cc: Mayor Wilson and City Council  
Mark Jinks, City Manager  
Emily Baker, Deputy City Manager  
Yon Lambert, Director, Transportation and Environmental Services  
Michael Brown, Chief of Police

---

<sup>1</sup> City of Alexandria, Virginia, Municipal Code, Ch.8, Art.A, Sec.5-8-2 (12/15/18): "The traffic and parking board shall consider matters concerning substantial changes to traffic and on-street parking regulations, and taxicabs. When reviewing these matters, the board shall prioritize safety of all users when making recommendations."





## Alexandria Bicycle and Pedestrian Advisory Committee (BPAC)

### Seminary Road Project Goals and Objectives<sup>2</sup>

#### Goals of the Seminary Road Complete Streets project are to:

- Improve safety and accessibility for all users
- Improve facilities for people who walk, bike, ride transit or drive cars
- Implement previously adopted plans, policies, and study recommendations

#### Objectives:

- Eliminate serious injuries and fatalities on the corridor
- Improve safety and accessibility for all roadway users by upgrading curb ramps and sidewalks
- Provide continuous, safe, and comfortable places for people to walk
- Introduce safer pedestrian crossings for residents, transit users, and all others walking the corridor
- Where excess roadway capacity exists, identify ways to meet the goals set forth in the Pedestrian and Bicycle Master Plan, Vision Zero Plan, Transportation Master Plan, Environmental Action Plan, and the Central Alexandria Traffic Study
- Serve vehicle traffic with a roadway design that minimizes delay at intersections, and encourages speed limit compliance.



## Alexandria Bicycle and Pedestrian Advisory Committee (BPAC)

### Goal #1: Improve safety and accessibility for all users.

**Recommendation: Apply proven and appropriate traffic calming to Seminary Road between N. Howard Street and N. Quaker Lane to achieve safe speeds and reduce crashes.**

- Fifteen percent of vehicles on Seminary Road exceed 38 mph despite stepped-up enforcement.<sup>3</sup>
  - o Alexandria Police made 945 traffic stops on Seminary Road east of N. Howard Street in 2018, equating to 3.5 percent of all city traffic stops on 0.6 percent of city streets.<sup>4</sup>
- Speeds above 25 mph significantly increase risk of serious injury and death.<sup>5</sup>
- The Federal Highway Administration (FHWA) recommends consideration of a four-to-three road diet on roads with less than 20,000 vehicles per day (vpd).<sup>6</sup>
  - o Seminary Road traffic volumes are 15,900 to 18,600 vpd<sup>7</sup>
  - o Entrances to this section of Seminary Road are already "one lane" in each direction.
- Based on forty years of experience in the U.S. and numerous case studies, road diets provide traffic calming, i.e. reduce excessive speeds, and have also reduced crashes by 19 to 47%.<sup>8</sup>
- A 2016 road diet project on King Street between Janneys Lane and Radford Street reduced speeds by 18% and crashes by 50% with no measurable diversion of traffic to other streets.<sup>9</sup>
- Staff traffic analysis of a road diet on Seminary Road demonstrate that there will be little, if any, additional delay, and suggests that this proven traffic-calming approach can be achieved with little likelihood of traffic diversion to adjacent neighborhoods.<sup>10</sup>

<sup>3</sup> Page 62 of the Central Alexandria Traffic Study Dec 2017 presentation, <https://www.alexandriava.gov/uploadedFiles/localmotion/info/gettingaround/2017-12-21%20Task%20Force%20Meeting%204%20-%20December%20Update.pdf>

<sup>4</sup> Alexandria Police report of 2018 Traffic Stops, <https://drive.google.com/file/d/1h2h4aUcxLq9YIE8xh4w10Jx-jquLZUgn/view?usp=sharing>

<sup>5</sup> "Impact speed and a pedestrian's risk of severe injury or death", Brian Tefft, <https://doi.org/10.1016/j.aap.2012.07.022>

<sup>6</sup> FHWA's "Road Diet FAQs", [https://safety.fhwa.dot.gov/road\\_diets/resources/pdf/fhwasal7021.pdf](https://safety.fhwa.dot.gov/road_diets/resources/pdf/fhwasal7021.pdf)

<sup>7</sup> Page 23 of City of Alexandria May 30, 2019 Seminary Road presentation, <https://www.alexandriava.gov/uploadedFiles/tes/SeminaryMeeting3PresentationFinal.pdf>

<sup>8</sup> FHWA Road Diet Fact Sheet, [https://safety.fhwa.dot.gov/provencountermeasures/road\\_diets/](https://safety.fhwa.dot.gov/provencountermeasures/road_diets/)

<sup>9</sup> Page 7 of City of Alexandria Seminary Road FAQs, [https://www.alexandriava.gov/uploadedFiles/tes/info/FAQs\\_Final.pdf](https://www.alexandriava.gov/uploadedFiles/tes/info/FAQs_Final.pdf)

<sup>10</sup> City of Alexandria Traffic Analysis of May 30, 2019, [https://www.alexandriava.gov/uploadedFiles/tes/info/Seminary%20InDesign%20Boards\\_PM3%20Alternative6.pdf](https://www.alexandriava.gov/uploadedFiles/tes/info/Seminary%20InDesign%20Boards_PM3%20Alternative6.pdf)



## Alexandria Bicycle and Pedestrian Advisory Committee (BPAC)

### **Goal #2: Improve facilities for people who walk, bike, ride transit or drive cars**

#### **Recommendation: Provide facilities for all users afforded by Alternative 3**

- Facilities for people who walk and ride transit:
  - o Address a priority sidewalk gap (#9 of 43 in the City Transportation Master Plan)<sup>11</sup>
  - o Provide buffer space of at least five feet to improve safety and comfort
  - o Provide for crossing one lane at a time and install pedestrian refuge islands
- Facilities for people who bike
  - o Provide buffered bike lanes to address a priority bicycle network gap (#9 of 96 in the City Transportation Master Plan)<sup>12</sup>
- Facilities for people who drive cars
  - o Include center left-turn lanes to provide a dedicated lane for turning vehicles, and avoid disruption of through traffic by turning vehicles
  - o Buffer space for pedestrians will provide expanded sight lines for drivers to pull out of driveways and unsignalized intersections.

<sup>11</sup> Appendix G, Prioritization Results, [https://www.alexandriava.gov/uploadedFiles/tes/info/G\\_Prioritization\(1\).pdf](https://www.alexandriava.gov/uploadedFiles/tes/info/G_Prioritization(1).pdf)

<sup>12</sup> Ibid.





## Alexandria Bicycle and Pedestrian Advisory Committee (BPAC)

### Goal #3: Implement previously adopted plans, policies, and study recommendations

- **Transportation Master Plan:**
  - a. Promote walking. "The character of traffic is of vital importance: If our streets are too wide or traffic is too fast, people will not walk."
  - b. Address sidewalk and bike network gaps identified in the Master Plan:
    - i. "Provide a continuous, connected and accessible pedestrian network that enables people of all ages and abilities to move safely and comfortably between places and destinations."
    - ii. "Add new bicycle lanes... to expand the on-street bicycle network. Focus implementation efforts on priority projects in this plan and on opportunities related to repaving or redevelopment."
- **Environmental Action Plan 2040:** Prioritize Low-carbon Mobility Options, specifically mobility options "consistent with the following level of precedence: pedestrians, bicyclists, public transportation, shared motor vehicles, freight vehicles and private motor vehicles."<sup>13</sup>
- **Complete Streets Policy:** "If safety and convenience of users can be improved within the scope of pavement resurfacing,... such projects shall implement Complete Streets infrastructure to increase safety for all users."<sup>14</sup>
- **Central Alexandria Traffic Study.**
  - a. "The four civic associations in the Central Alexandria Traffic Study area unanimously agreed, when asked to choose between cut-through traffic, safety and congestion, that reduction of cut-through traffic is our top priority as it addresses both quality of life and safety concerns within our communities."<sup>15</sup>
  - b. Civic association Presidents also recommended that the City "Promote and encourage greater use of transportation alternatives in Alexandria and in neighboring jurisdictions."<sup>16</sup>

<sup>13</sup> Page 29, *Draft Environmental Action Plan 2040*, <http://bit.ly/EAP2040Draft>

<sup>14</sup> City of Alexandria Complete Streets Policy, [http://bit.ly/CompleteStreetsPolicy\\_Alex](http://bit.ly/CompleteStreetsPolicy_Alex)

<sup>15</sup> Central Alexandria Traffic Study civic association Presidents' letter dated April 10, 2018, Attachment #3 to City Manager memorandum to City Council, dated May 14, 2018.

[https://www.alexandriava.gov/uploadedFiles/tes/info/CentralAlexTrafficStudy\\_CMO\\_Memo\\_To\\_CC\\_05142018.pdf](https://www.alexandriava.gov/uploadedFiles/tes/info/CentralAlexTrafficStudy_CMO_Memo_To_CC_05142018.pdf)

<sup>16</sup> Ibid



June 19, 2019

City of Alexandria  
Traffic and Parking Board  
301 King Street  
Alexandria, VA 22314

**Re: Seminary Road Complete Streets Project**

Dear Members of the Traffic and Parking Board,

On behalf of the Clover College Park Civic Association (CCPCA), we are writing you to summarize our residents' feedback on staff's recommendation for the Seminary Road Complete Streets Project.

Overall, a vast majority (93%) of our residents reject the reduction of vehicle lanes proposed by staff between St. Stephen's Road and Zabriskie Drive. In addition, a majority believe that the future estimated \$1.5 million cost for a sidewalk along the northern stretch of that road is too costly both in general, and as a justification for a vehicle lane reduction. Over 70% of our residents continue to believe that staff should develop an Alternative 4 which maintains four vehicle travel lanes while incorporating pedestrian and safety improvements.

With respect to the changes proposed for the Seminary Road/Janneys Lane/Quaker Lane intersection, our residents are divided in their opinions on the creation of a "Right Turn Only" lane but support conversion of the all-pedestrian phase to a leading pedestrian interval.<sup>1</sup> Those who objected to the creation of a "Right Turn Only" lane are concerned about the potential delay created by that change. To date, no traffic impact analysis was presented by staff to allay those concerns.

Based on the feedback from our residents, and their substantial concerns with process to date, the CCPCA Board asks that you reject staff's recommendation for the Seminary Road Complete Streets Project. We request city staff continue to work on finalizing one of the Alternative 4 designs,<sup>2</sup> which were presented to our board members in May, for presentation to City Council in the fall.

---

<sup>1</sup> Please note that while a majority of residents supported the lane conversions proposed by staff, 59% are concerned about the "No Turn on Red" and believe it will create additional backups on Seminary Road. We would ask that if this portion of staff's recommendation moves forward, that staff follow up with the Traffic and Park Board with traffic impact data and make appropriate adjustments if these concerns bear fruit.

<sup>2</sup> Each of which incorporated four vehicle lanes, narrowed in width to reduce speed, and included various pedestrian and safety improvements.



## Summary of Residents' Concerns

As previously noted in our letter to city staff on May 10, 2019, our residents have expressed a variety of concerns about this project via our community meetings, neighborhood list serve, and emails to the board. These may be summarized as follows:

- concerns about how a reduction in the number of vehicle lanes will impact our area.
  - To date, city staff has not produced any analysis on this issue based on data available through the Central Alexandria Traffic Study.
- concerns about the efficacy of a road diet on Seminary Road.
  - ADT<sup>3</sup> volumes along Seminary Road are just below the NHTSA's<sup>4</sup> generally recommended threshold of 20,000.
  - TPB's<sup>5</sup> Long-Range Plan Task Force estimates that vehicle traffic will increase substantially across Northern Virginia over the next 10-20 years.<sup>6</sup> It will take only a 16% increase in the ADT for the portion of Seminary subject to a road diet to hit that threshold.
  - Approximately 23% of Alexandria roads are currently over capacity, and 55% of arterials roads are near or over capacity across Northern Virginia (along with 85% of collector roads, such as North Jordan Street and West Taylor Run Parkway).<sup>7</sup>
  - 85% percentile vehicle speeds on the main part of upper King (which received a full road diet and 10 MPH speed limit reduction) are still at 35.6 MPH. Studies show narrowing vehicle lane width can produce similar speed reduction results.<sup>8</sup>
  - Delay queues for King Street were significant following the road diet until traffic lights were re-timed at Janneys Lane and Kenwood Avenue. No data was provided on how the signal re-timing impacted delays on Kenwood or Janneys, and no data has been provided on the potential impact of signal re-timing to delays for Howard Road or Quaker Lane.<sup>9</sup>
- concerns that the city is using safety as a reason to propose reducing the number of lanes on Seminary.
  - NO pedestrian involved crashes occurred along this stretch of Seminary Road in either 2017 or 2018.<sup>10</sup>
  - No KSI crashes have occurred along this stretch of Seminary Road.

<sup>3</sup> Average Daily Trips

<sup>4</sup> National Highway Traffic Standards Administration

<sup>5</sup> National Capital Region Transportation Planning Board, Metropolitan Council of Governments

<sup>6</sup> *DC traffic to get worse, leaders question whether real solutions possible*; <https://wtop.com/dc-transit/2017/05/dc-traffic-get-worse-leaders-question-whether-real-solutions-possible/slide/1/>

<sup>7</sup> *By the numbers: Most congested types of roads in Northern Va.*; <https://wtop.com/dc-transit/2017/02/numbers-congested-types-roads-northern-va/slide/1/>

<sup>8</sup> <https://www.fhwa.dot.gov/publications/research/safety/15030/006.cfm> and <https://streets.mn/2015/11/03/chart-of-the-day-lane-width-vs-speed-on-suburban-streets/>

<sup>9</sup> Staff's study on the delays created by various alternatives used both peak ADT volumes and signal re-timing. It is not known to what extent that signal re-timing impacted that delays presented as part of their analysis.

<sup>10</sup> <https://www.alexandriava.gov/uploadedFiles/police/Traffic%20Enforcement%20Eval-2017.pdf> and <https://www.alexandriava.gov/uploadedFiles/police/info/2018TrafficReport.pdf>

- Police data and city analysis find that streets within CCP's community have suffered a nearly equal, and sometimes higher, number of vehicular accidents as the stretch of Seminary Road at issue.<sup>11</sup>

In addition to the concerns expressed to city staff during our May meeting, our residents have expressed significant concerns about the city's handling of this process, including:

- City staff's refusal to move the Traffic and Parking Board hearing date when notified that two or more members of the board would be absent.
  - Despite staff's assurance that this would not impact the process because they intend to automatically appeal this issue to City Council, our residents believe that the Traffic and Parking Board plays an important role in this process, and any matter as significant as altering an arterial road is worthy of accommodating the full board's attendance and vote.
  - If the Traffic and Parking Board moves forward with a recommendation in the absence of two or more members, we request that you ask city staff to caveat that recommendation in their presentation to City Council.
- Limiting resident to feedback to those who live within a half mile of the project area.
  - Seminary Road is an arterial road under VDOT's classification system<sup>12</sup> and as such, provides an important role in moving traffic through an urban area.
  - Treating major changes to an arterial road as a local project which only requires feedback from nearby stakeholders is an affront to all those who use Seminary Road on a near daily basis.
  - Given the limited scope of the feedback analyzed by staff as part of their recommendation, you should reject that data and the recommendation as invalid and incomplete.
  - CCP residents (many of whom are outside the half mile project area) use Seminary Road on a weekly basis. A vast majority use it at least multiple times per week and over 30% use it daily. Use of Seminary Road by our residents is not limited to vehicle travel; 46% of our residents use Seminary for pedestrian travel; 25% use it for occasional cycling travel; and 15% use it for occasional mass transit. Their opinions on this project matter.
- It has been noted by many residents that regional and national companies, special interest groups, and individuals are attempting to influence this project.
  - Our residents reject the influence of outside parties on a project that is primarily funded by taxpaying residents of our city. We kindly ask that you do the same.
- Lack of public statements from the City of Alexandria Police Department, City of Alexandria Fire Department, INOVA Alexandria Hospital or the Beth El Hebrew Congregation.
  - Our residents believe this information is essential to this decision-making process and those statements should be gathered and disclosed by staff for your evaluation prior to evaluating staff's recommendation.

<sup>11</sup> See also, City of Alexandria, Vision Zero Crash Dashboard, High Priority Crash Locations.

<sup>12</sup> <http://www.arcgis.com/home/webmap/viewer.html?webmap=3eca6c9adb6649c988d98734f85baddb>



## Conclusion

As a community, our residents believe traffic safety should be a priority for this city. However, they believe that significant changes to arterial roads within our city should be completed in a manner that considers the role of these roads in moving traffic through our city and away from local, residential streets. They believe their feedback is important, and should not be excluded based upon some artificial, last minute boundary implemented by staff. They also believe that as taxpaying residents of this city, you must reject the views of those outside our city who seek to influence this process. Finally, they believe they have the right to be presented with a traffic analysis that allows them (and you) to evaluate any potential traffic diversion created by these projects.

In the absence of (1) a proper evaluation of Alexandria resident feedback, (2) a traffic analysis that studies any diversion created by a lane reduction, (3) a Traffic and Parking Board hearing where two or more members may be absent, and (4) a general lack of consideration for the role arterial roads play in our city, the Clover College Park Civic Association Board members ask you to **reject staff's recommendation for Seminary Road**. We kindly request that you implore staff to move forward with finalizing one of the Alternative 4 designs, which incorporate four vehicle travel lanes and pedestrian safety improvements, for presentation to City Council in the fall.

Sincerely,

The Board of the Clover/College Park Civic Association  
Lisa Porter, President  
Roy Byrd, Vice President  
Hill Montague, Treasurer  
Kathleen Parnell, Secretary  
Thomas Walczykowski, Member

cc: Mayor Wilson and the Members of City Council  
Christine Mayuer, Complete Streets Program Manager for the City of Alexandria

**From:** John B. Richardson <JRichardson@eaglebankcorp.com>  
**Sent:** Monday, June 17, 2019 12:04 PM  
**To:** Bob Garbacz <bob.garbacz@alexandriava.gov>  
**Cc:** Christine Mayeur <christine.mayeur@alexandriava.gov>  
**Subject:** SEMINARY ROAD PROJECT

Dear Mr. Garbacz,

I hope this note finds you well. I am an interested resident regarding the upcoming design decision for Seminary Road. Unfortunately, I will be unable to attend the meeting on 6/24 but I would like to express some of my concerns. I live at 1440 N Gaillard Street (one house off Seminary) with my wife and two daughters (ages 9 and 11). We moved to the neighborhood in June 2018, and I have been a watchful observer of the traffic on Seminary Road (nearly daily). I feel that the current four lane design poses safety hazards that need to be addressed, and I would like to share some of my viewpoints.

My wife and I frequently run and walk on Seminary between Howard and Quaker. When we moved in, we both quickly found out that being on the sidewalk came with a fair amount of anxiety. This is especially true when not facing oncoming traffic and/or in low light conditions. When cars (and especially large trucks) are speeding in the right hand lane, it can make for a scary experience. In order to feel more comfortable and face oncoming traffic, we will often cross Seminary. This can also be a hair-raising experience because speeding traffic can close in quickly. We have a 12 year old Lab who still likes to walk (slowly), and we have had some close calls trying to cross due to speeding traffic. In addition, our children have friends up and down the corridor on both sides of Seminary. We have prohibited them from being on Seminary Road or crossing due to the lack of adequate sidewalk buffer and inability to cross safely.

I would not support any design that would have a material negative impact on traffic or emergency response. In reviewing the traffic studies it would seem that the impact of modifying the design (for instance Alternative 3) would be minor. I support the creation of a safer thoroughfare for walkers, runners and bikers that would also help connect our neighborhood.

If you could share this with the Traffic and Parking Board members I would be most appreciative.

Sincerely,  
John Richardson

703-798-7462

-----Original Message-----

From: Patsy Rogers <patsyrogersinva@gmail.com>

Sent: Monday, June 17, 2019 11:07 AM

To: Bob Garbacz <bob.garbacz@alexandriava.gov>

Subject: Seminary Road Plan 4

Dear Mr. Garbacz:

As a fifty year resident of the Seminary Rd/Janney's Lane corridor, I am strongly in favor of Plan 4- keeping four lanes on Seminary Road while enhancing safe crossings for pedestrians.

After 20 years in Clover/College Park, we are eye witnesses to the dramatic and dangerous increase in cut-through traffic following the enforced slowdown on Quaker Lane.

From 3pm on, we are literally trapped in our own neighborhood. Turning left onto Janney's Lane or Cambridge Ridge is impossible during our now extended rush hours and Duke Street is Bumper to Bumper in both directions for much of the day.

Please don't make things even worse by forcing the already horrible traffic on Seminary into fewer lanes.

Patricia Rogers

Sent from my iPhone

June 17, 2019

Chairman William Schuyler and Traffic and Parking Board members,

Seminary Road is unsafe due to excessive vehicle speeds, lack of sufficient buffer space for people on sidewalks and lack of safe infrastructure for people who bike. We ask that you recommend modifications to the staff-proposed plans for Seminary Road to (1) achieve speeds near 25 mph, (2) provide sufficient buffer space, and (3) include bike lanes.

As residents, we are concerned about the risk of serious injury walking along or across these streets, and entering and exiting our driveways or numerous un-signalized intersections. We are concerned that people who bike or who might bike are expected to mix with motor vehicles being driven in excess of 35 mph<sup>1</sup>. These concerns have a common thread: vehicle speeds are well in excess of 25 mph in spite of increased enforcement<sup>2</sup>. The Traffic and Parking Board agreed was appropriate for Seminary Road in its February 2016 recommendation to the City Manager.

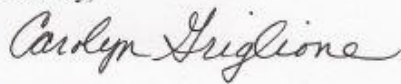
We ask that you recommend modifications to the staff-proposed plans for Seminary Road to include the items listed below. Amplifying information for these recommendations is attached:

1. **Provide one through-lane in each direction** per staff's March 25 Alternative 3.
  - a. Lane reconfiguration is a proven countermeasure that provides "Traffic calming and more consistent speeds"<sup>3</sup>
  - b. Entrances to Seminary Road between N. Howard Street and N. Quaker Lane are already essentially "one lane"; continuing one lane in each direction between these streets is unlikely to cause new delays or divert traffic.
2. **Allocate roadway width to center left turn lanes/pedestrian refuge islands and buffer space/bikes lanes** per staff's Alternative 3, but modified to fill the sidewalk gap.
3. **Modify staff's proposed plan by creating a "multi-use" path to fill the sidewalk gap** i.e. allocate a portion of the 7-foot buffer on the south side of the street to the north side.
4. **Provide 15-mph school zone speed limits and signage in the vicinity of Francis C. Hammond Middle School.**

Our recommended modifications achieve *all* project goals and objectives, including Objective #6, "Serve vehicle traffic with a roadway design that minimizes delay at intersections, and encourages speed limit compliance." The staff-proposed plan does not meet this objective.

Recommendations #1 and #2 above are specifically supported by more than 700 Alexandria residents who have signed a petition for a "Road Diet" on Seminary Rd east of N. Howard St.

Sincerely,



Carolyn Griglione

<sup>1</sup> Central Alexandria Traffic Study 85<sup>th</sup> percentile speeds for Seminary Rd: 38 mph (AM Eastbound/PM West-bound)

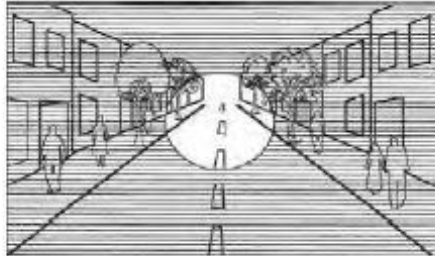
<sup>2</sup> In 2018, Alexandria police made 945 traffic stops on Seminary Road between N. Howard Street and N. Quaker Lane, representing 3.5% of 27,543 traffic Department-wide traffic stops in Alexandria

<sup>3</sup> U.S. Department of Transportation Federal Highway Administration [Proven Countermeasures: Road Diets](#)

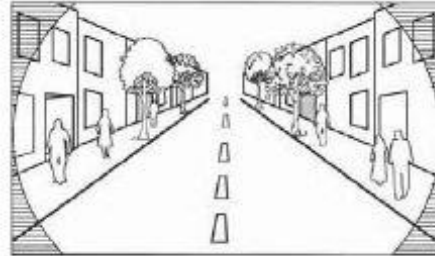


## Why Speed Matters

**More awareness + more time to react = less likelihood of a crash**



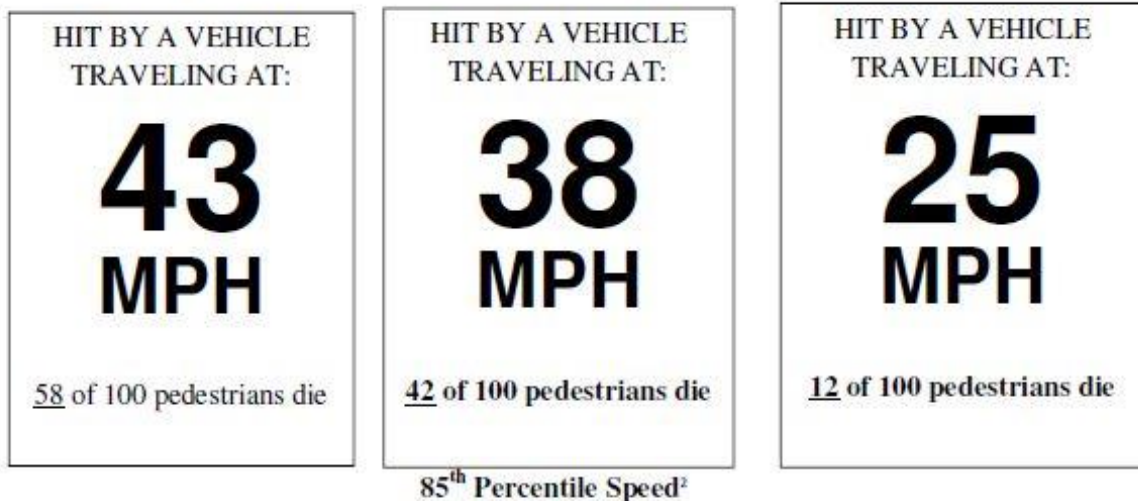
**Field of Vision at 30 to 40 mph**



**Field of vision at 15 mph**

*A driver's field of vision increases(↑) as speed decreases(↓). At lower speeds, drivers can see more of their surroundings and have more time to see and react to potential hazards.*

**Risk of injury and death decreases significantly as speed decreases<sup>1</sup>**



Driving 25 mph rather than 35 mph adds *less than a ¼ of a minute* to the 0.9 mile trip on Seminary Rd. from N. Howard Street to N. Quaker Lane (~ 40 seconds per mile).

**Higher vehicle speeds = higher risks of more crashes and significantly higher risk of injury and death if struck**

<sup>1</sup> Tefft BC. Impact speed and a pedestrian's risk of severe injury or death. *Accident Analysis & Prevention*, Volume 50, January 2013, Pages 871-878 doi: 10.1016/j.aap.2012.07.022: <http://www.ncbi.nlm.nih.gov/pubmed/22935347>, Epub 2012 Aug 27

<sup>2</sup> 2017 Central Alexandria Traffic Study 85<sup>th</sup> percentile speeds for Seminary Road: 38 mph (AM East-Bound/PM West-bound)

### Seminary Road Traffic Statistics

Prepared for: Lt. Michael May, Motor Unit, APD

Prepared by: Amanda Caligiuri between 3/19/19-3/21/19

## Traffic Stops

### 2018 Totals

2018 Traffic Stops on Seminary Rd	1410
2018 Traffic Stops (N. Quaker-N. Howard)	945

Seminary Rd between N. Quaker and the Fairfax County border is 2.7 miles. This N. Quaker Ln and N. Howard St corridor is 0.9 miles or 33.3% of the length of Seminary Rd in Alexandria. 67.0% of the Seminary Rd traffic stops in 2018 were in the N. Quaker Ln to N. Howard stretch.

### 2018 Traffic Stops by Month

#### All of Seminary Rd:

January	February	March	April	May	June	July	August	September	October	November	December
151	107	84	129	107	92	106	132	105	169	103	125

#### Seminary Rd between N. Quaker Ln & N. Howard St

January	February	March	April	May	June	July	August	September	October	November	December
110	85	50	99	79	65	76	94	57	94	68	68

### Seminary Road Traffic Statistics

Prepared for: Lt. Michael May, Motor Unit, APD

Prepared by: Amanda Caligiuri between 3/19/19-3/21/19

### Citations

	Traffic Citations (by stop)	Traffic Citations
All Seminary Rd	940	1156
N. Quaker-N. Howard	520	554

On all of Seminary Rd, 428 (37.0%) of the 1156 citations issued were for speeding violations. 414 (96.7%) of the speeding violations were in the 25 mph zone.

- 183 citations (15.8%) were issued for failure to pay time/attention.
- 103 citations (8.9%) were for official sign(s) violations.
- 54 citations (5.5%) were for HOV violations.

Of the 554 citations issued between N. Quaker Ln and N. Howard St, 285 (54.1%) were for speeding violations. All but one was in the 25 mph zone.

- 80 citations (14.4%) were issued for failure to pay time/attention.
- 60 citations (10.8%) were for official sign(s) violations.

55.3% of the citations issued for Seminary Rd in 2018 were in the N. Quaker Ln to N. Howard stretch. This corridor is 33.3% of the length of Seminary Rd in Alexandria.

### Citation Stops by Month

#### All of Seminary Rd:

January	February	March	April	May	June	July	August	September	October	November	December
91	77	48	91	61	65	75	87	70	108	72	95

#### Seminary Rd between N. Quaker Ln & N. Howard St

January	February	March	April	May	June	July	August	September	October	November	December
78	35	24	63	34	34	55	50	31	50	37	30

From: Lt. Mike May, Traffic Safety Officer,

Department-wide traffic stops totaled 27,543 in 2018, so close to 3.5% on that section of Seminary Rd.

Seminary Rd is one of our top locations for selective enforcement. Similar locations are Potomac Avenue, W. Braddock Rd, Duke St and Quaker lane.





U.S. Department of Transportation  
Federal Highway Administration

## PROVEN SAFETY COUNTERMEASURES



### Road Diets (Roadway Reconfiguration)

A "Road Diet," or roadway reconfiguration, can improve safety, calm traffic, provide better mobility and access for all road users, and enhance overall quality of life.

SAFETY BENEFIT:

**4-LANE → 3-LANE  
ROAD DIET  
CONVERSIONS**

**19-47%**

Reduction in total crashes



BEFORE



AFTER

Before and after photos of a Road Diet project.

Source: City of Orlando, Florida

A Road Diet typically involves converting an existing four-lane undivided roadway to a three-lane roadway consisting of two through lanes and a center two-way left-turn lane (TWLTL).

Benefits of Road Diet installations may include:

- An overall crash reduction of 19 to 47 percent.
- Reduction of rear-end and left-turn crashes due to the dedicated left-turn lane.
- Reduced right-angle crashes as side street motorists cross three versus four travel lanes.
- Fewer lanes for pedestrians to cross.
- Opportunity to install pedestrian refuge islands, bicycle lanes, on-street parking, or transit stops.
- Traffic calming and more consistent speeds.
- A more community-focused, "Complete Streets" environment that better accommodates the needs of all road users.

A Road Diet can be a low-cost safety solution when planned in conjunction with a simple pavement overlay, and the reconfiguration can be accomplished at no additional cost.



Road Diet project in Honolulu, Hawaii.

Source: Laidos

Source: Evaluation of Lane Reduction "Road Diet"  
Measures on Crashes FHWA-HRT-10-053.

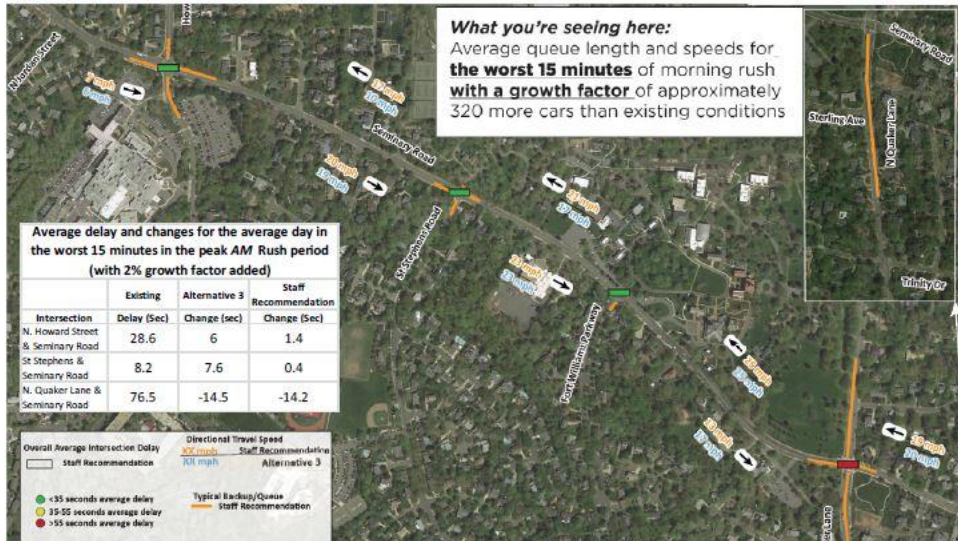
→ For more information on this and other FHWA Proven Safety Countermeasures, please visit <https://safety.fhwa.dot.gov/provencountermeasures>.

FHWA-SA-17-066

**Safe Roads for a Safer Future**  
Investment in roadway safety saves lives  
<http://safety.fhwa.dot.gov>

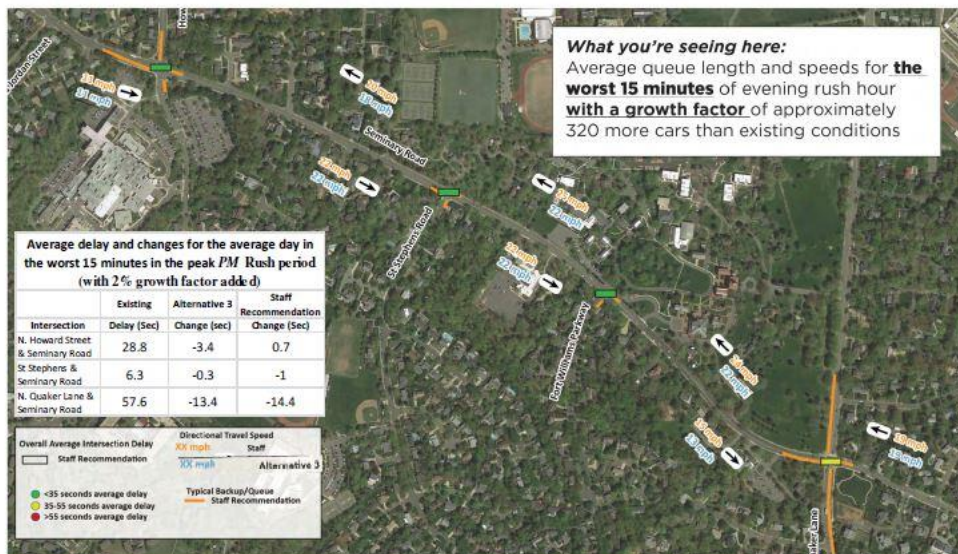
## Traffic Analysis Comparison (Morning) : Staff Recommendation versus Alternative 3

### Morning Rush Hour- Worst 15 Minutes



## Traffic Analysis Comparison (Evening) : Staff Recommendation versus Alternative 3

### Evening Rush Hour- Worst 15 Minutes



## Bicyclists Do Use Seminary Road

Carolyn Griglione





Carolyn Griglione



Carolyn Griglione



AM "Rush" Hour  
East-Bound Seminary Road  
(9:02 am to 9:59 am, Tuesday 12 June)





PM "Rush" Hour  
East-Bound Seminary Road  
(2:36 pm to 3:27 pm, Tuesday 12 June)





Looking east at the Beth El

Cars parked along both sides of Seminary Road

Traffic moves smoothly



Carolyn Griglione

Looking west at Zabriski Drive

Cars parked along both sides of Seminary Road

Traffic moves smoothly



Carolyn Griglione

Looking west at Ft. Williams

Cars parked along both sides of Seminary Road

Reduced speeds



Carolyn Griglione

## Benefits of Road Diets



Road Diets provide benefits to users of all modes of transportation, including bicyclists, pedestrians, and motorists. Benefits can include the following:

- **Crash reduction** of 19 to 47 percent.
- **Reduction of rear-end and left-turn crashes** through the use of a center two-way left-turn lane (TWLTL).
- **Reduced right-angle crashes** as side street motorists must cross only three lanes of traffic instead of four.
- **Reduced speed differential** due to one lane of traffic in each direction.
- Encourages a more community-focused, **"Complete Streets" environment**.
- **Fewer lanes for pedestrians to cross** and an opportunity to install pedestrian refuge islands.
- The opportunity to install **bicycle lanes** within existing cross section.
- The opportunity to **allocate the "leftover" roadway width for on-street parking, transit stops, or other functions**.
- **Simplifying road scanning and gap selection** for motorists making left turns from side streets or the mainline.

## Case Study

Reston, Virginia



Lawry's Road, before and after a 2009 Road Diet  
Source: Randy Dittbemer, Virginia DOT

Reston, Virginia, a suburb of Washington, DC, is a planned community with a larger emphasis on non-motorized travel than many suburbs. The need for multi-modal accessibility has increased with the opening of a nearby rail transit station.

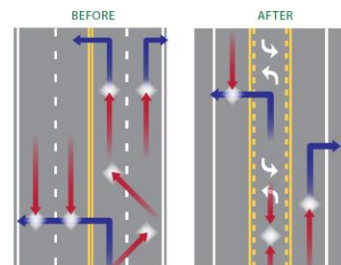
The Virginia Department of Transportation (VDOT) implemented a Road Diet on a 2-mile segment of Lawry's Road in Reston in conjunction with a repaving project in 2009. Although community reaction was mixed before the project, views shifted to strong support after implementation. In addition to the clear benefits of dedicated bicycle infrastructure and left-turn space, the project helped reduce crashes in the corridor by nearly 70%. Community support was so strong that a second Road Diet was installed on nearby Soapstone Drive in 2011, and Soapstone has also achieved a 70% crash reduction. The resulting linked network of bicycle accommodations provides an excellent travel option for access to the transit station. The success of the Reston projects is leading VDOT to expand its use of Road Diets regionwide.

## Road Diets

### A Proven Safety Countermeasure

Four-lane undivided highways have a history of relatively high crash rates, especially as traffic volumes and turning movements increase. The main issue is that the left (inside) lane is shared by higher-speed through traffic and left-turning vehicles. Road Diets reduce the number of vehicle-to-vehicle conflict points that contribute to rear-end, left-turn, and sideswipe crashes.

Studies indicate a 19 to 47 percent reduction in overall crashes when a Road Diet is installed on a previously four-lane undivided facility as well as a decrease in crashes involving drivers under 35 years of age and over 65.<sup>1,2</sup>



**From:** Elinor Coleman <elinorcvm@gmail.com>

**Sent:** Tuesday, June 18, 2019 1:52 PM

**To:** Bob Garbacz <bob.garbacz@alexandriava.gov>; ccpca\_events@googlegroups.com; lkporter78@gmail.com

**Subject:** Elinor Coleman has additional comments about road changes process

Dear Mr. Garbacz and Transportation Board and City Council Members,

I just now sent out comments to you about my position against narrowing Seminary Road, with major details included.

This email is strictly to address the city process which is opaque in nature and does not represent the citizens of Alexandria in an all inclusive manner.

I am against road and street changes on a one by one basis.

City Council has yet to review a formal all comprehensive plan or map. this is according to Councilman Chapman, last Thursday, June 20.

Furthermore, your committee and board must all be present for discussions and votes, so knowing in advance that several members will be unavailable for the next scheduled meeting on June 24<sup>th</sup> means that you must cancel the meeting until all members are present.

Futhermore, you have limited the feedback and representation of community residents to a small half mile radius, when frankly, this is a total city wide endeavor and limiting factor. All residents of Alexandria use the Alexandria Inova Hospital!

Yet in your committee and board makeup of citizens, you have included lobbyists from WashingtonDC and Seattle/Portland and private businesses which financilally would benefit from the bikeshare and scooter revenues.

This is a formal conflict of interest.

All residents and citizens of Alexandria should be included in this discussion. We should be offered a professional comprehensive overview of traffic alternatives.

Only hired consultants should be permitted to located outside of Alexandria and weighing in on information, but not have a vote on this committee/board.

Let me remind you, staff and city employees and council members, that you are hired or voted into office in order to serve the citizens of Alexandria. We demand your integrity and transparency in all planning and execution of major transportation formats. Our many forms of taxes pay your salaries and further pay for the changes you design.

We expect your expertize and professionalism to be objective, professional, of the highest level, in order to address and solve public services and conditions which affect us here in Alexandria.



If you are found to be doing back room tactics, then we shall demand the City Council begin all over again, requesting committee members who all reside in Alexandria, begin all over a comprehensive map of all roads and streets connecting the highways, and the plan to ask the citizens which plans seem appropriate.

So therefore, all of us should be weighing into the Seminary Road and all road designs.

Yours truly

Elinor Coleman

Elinor Coleman's Vintage Mirage

117 South Columbus Street

Old Town Alexandria, VA 22314

ph:703-535-8200

fx: 703-535-8299

email: [info@vintagemirage.com](mailto:info@vintagemirage.com)

**From:** Elinor Coleman <elinorcvm@gmail.com>

**Sent:** Tuesday, June 18, 2019 12:57 PM

**To:** Bob Garbacz <bob.garbacz@alexandriava.gov>

**Subject:** Elinor Coleman home owner and business owner weighs in about road changes

Dear Mr. Garbacz,

I am a home owner on Dartmouth Road at Yale Road. I am also a business owner and building owner on South Columbus St in Old Town.

I constantly travelling around Alexandria and the various local neighborhoods, due to the business of downsizing estates for my vintage clothing and accessory store. Over the past year or more, ever since the roads have been congested with traffic going to the 95 highway, 495 highway and 395 highway through our neighborhood local streets. Waze directs traffic to the small streets.

I am totally against the changes of the Seminary Road corridor! We need the two lanes each way.

We need MORE BUSSES along Seminary. We need an additional lane at the intersection of Seminary Rd/Quaker Lane/Janey's Lane. So the right hand turn cars can have a lane of their own. Not converged lanes.

Yes we need further pedestrian walkways on all of our neighborhood streets. It is common sense.

**I am very concerned about the safety and well being of the citizens of Alexandria since the time for response from emergency services would be greatly affected!**

**Inova Alexandria Hospital is along this corridor, meaning that ambulances would be slowed down in delivery of injured citizens.**

**Fire trucks and police cars would be slowed down along this corridor, the fire house on Seminary would be slowed down.**

**All EMT vehicles would be slowed down.**

**Beth El Synagogue and its members ( I am a member) would have difficulty parking and accessing the synagogue on this corridor due to commuters.**

**In the horrible and scary event of an emergency at the synagogue, access for police or fire trucks would be delayed. There are schools at Beth El Synagogue**

**during the week, and of course many families attending religious activities on weekends. During High Holidays in Sept and Oct, parking is usually formed along one lane of Seminary.**

Cancel the scooter program. It is totally dangerous and not monitored by objective agency. **The city is not gaining income from this program.** The police are being told not to get involved in any infractions nor mis handling of scooters.

Cancel the bike share program. These two programs would save the city major staff time and large amounts of money.

Bike Share costs the city \$800,000 approximately plus staff time.

Furthermore and in conclusion, I am totally against the spending of \$1.8 Million dollars for this change of Seminary Road.

The City of Alexandria was unwisely active in requesting the Mark Center, with no public subway access.

thje City of Alexandria was unwisely active also in developing the Patent and Trademark Center. The city forgot to add the paragraph which included donated funds to the city coffers with the signing of the agreement with the Science Foundation.

Now we will have Amazon coming to our city.

Hire a professional transportation specialist who has experience working with metropolitan areas of the country such as Draycott.

Your transportation specialists need to slow down on unclear and totally non conforming ideas about our narrow and bottleneck local streets.

Create a solid comprehensive format to the total of Alexandria. Create a total analyzed map of streets and show us the whole program. Not one street by street.

Show us how you can widen all of the local streets.

Do not jeopardize our residential local streets for a piecemeal event which is designed to fail!

Give us more comprehensive bus and trolley wheeled opportunities.

Spend the \$1.8 Million dollars with HUD and create new affordable housing, which when matched with government funding would amount to \$3.6 Million dollars of housing. Not unnecessary local pavements, painted bike lanes, shaved down cement curb stones.

Yours truly

Elinor Coleman

Elinor Coleman's Vintage Mirage

117 South Columbus Street

Old Town Alexandria, VA 22314

ph:703-535-8200

fx: 703-535-8299

email: [info@vintagemirage.com](mailto:info@vintagemirage.com)

**From:** Laura O'Hara <laura.turner.ohara@gmail.com>

**Sent:** Wednesday, June 19, 2019 7:46 PM

**To:** Bob Garbacz <bob.garbacz@alexandriava.gov>

**Subject:** Seminary Roads Complete Streets Project

Dear Members of the Traffic and Parking Board,

My husband, five-year-old daughter, and I live on Cambridge Road in the Clover-College Park neighborhood of Alexandria. We feel lucky to have bought our house in such a great location. Our neighbors have truly become our village.

We purchased our home directly across from a private high school (Bishop Ireton) with our eyes wide open to the kinds of pedestrian and vehicular traffic a school brings. But the school has not been the problem; in fact, the BI administration joins my neighbors and me in expressing concern for our safety due to the high volume of cut through traffic on our street. It has gotten noticeably and incredibly worse in the six years since we moved in. Every day in the evening rush hour (4:30-6:30 PM), cars are backed up to Dartmouth Road or points north in an attempt to turn left on Duke Street and get in an already backed up, exit-only to Telegraph Road. The bulk of these cars have Maryland license plates.irate, frustrated drivers block my driveway, make sudden and dangerous turns INTO my driveway in an attempt to turn around, clip legally parked cars on the side of the road, and throw garbage into our yard. We don't allow our daughter to ride her bike on the sidewalk or walk beyond our reach during rush hour for fear of a car's sudden turn into a driveway.

Our neighborhood has had the privilege and time to be very vocal about this issues despite what feels like inadequate attention by the city. But it's not just us. My daughter enjoys playing at the playground in the public housing complex on Yale Drive, just down the hill from our home. While at the playground, we have had a chance to talk with our neighbors who live there. They are also frustrated when Yale backs up, as they are unable to easily get to their jobs and obligations. They are equally concerned for the safety of their children on Yale Drive, especially older children who cross the street to hang out at the Alexandria Commons shopping center.

It is common sense that reducing car travel lanes on Seminary Road will only push more traffic into side streets and exacerbate the problems felt by my neighbors and me. But what is more, I have also been appalled at the tactics taken by the greater D.C.-area bicycle lobby to paint anyone who disagrees with them as anti-safety. I've recently started riding my bicycle to work on Capitol Hill several times a week. I, personally, use the bike lanes and "improvements" on King Street, but they are far too dangerous for casual cyclists and are WAY too dangerous for my daughter, even when she's attached to me on her



trailer bike. It strikes me that these "improvements" were not thought through; they pay lip service to "safety" and improvement for cyclists and pedestrians without actually solving the real problem. The most dangerous situations for me as a cyclist are frustrated drivers who make erratic, risky, and often illegal moves to dodge traffic: swerving into bike lanes, making left turns across traffic without yielding to bicycles, passing dangerously close to me in shared lanes, failing to look or stop while making a quick right-on-red, and driving at unsafe speeds in areas where traffic eases up in order to make up time. A broader, more comprehensive view on solving our local traffic problems--addressing back ups on Duke Street and adding/streamlining access points to the Beltway and 395--would make Central Alexandria safer for EVERYONE: pedestrians, cyclists, runners, and drivers. This should be the first step in bettering both the safety and quality of life for Central Alexandrians, not creating a choke point in what is already a daily, frustrating mess.

Thank you for your attention to this matter.

Sincerely,

Laura Turner O'Hara

170 Cambridge Rd

**From:** Peter Turner <pturner525@comcast.net>

**Sent:** Wednesday, June 19, 2019 4:47 PM

**To:** Bob Garbacz <bob.garbacz@alexandriava.gov>

**Cc:** ccpca.board@gmail.com

**Subject:** Traffic and Parking Board 6/24 docket (Seminary Road Complete Streets Project)

Dear Bob

Please share this with the members of the Traffic and Parking Board. I am writing to express my opposition to the proposed options so far presented to the citizens of Central Alexandria for the Seminary Road Complete Streets Project.

Since 1996, my wife and I have resided at 600 W Taylor Run Parkway.

Until the last couple years, our street and the wider neighborhoods of Clover College Park and Taylor Run which our street borders has been a wonderful place to live. We've often had friends and family cite how lucky we are to enjoy city offerings as well as the feeling of living miles outside the beltway nestled among trees and the stream. Sadly, those days are gone thanks to cut through traffic and the impact of ride sharing services like Uber and Lyft during evening rush.

I have served the CCPCA as a board member and was on the Central Alexandria Traffic Study TF. As part of my role in civic engagement I also codeveloped and manage the TrafficZen Facebook page <https://www.facebook.com/CentralAlexVA/>. The sole purpose of this site is to document and share first person stories of the systemic breakdown of community safety thanks to the traffic congestion which is projected to get seriously worse in the coming years. Further, we research and collect third party research and municipal best practices that offer other ways forward to improve traffic congestion and mobility options. We do so because we have found the city is never interested in collecting and sharing such insights.

As members of the T&PB may know, Central Alexandria suffers significantly and daily from cut through traffic reflected in the study that 42% of the volume are motorists who "neither live or work" in Alexandria. Our traffic site is full of video, photos, and narratives of resident stories proving that traffic volumes of this size directly impact safety to pedestrians, cyclists and even property in our communities.

Reducing lanes on Seminary Road as proposed will only make our traffic congestion worse and reduce safety. Currently, first responders must find ways through such traffic to perform their duties. I work

from home three days a week and the traffic is at standstill in front of my house (.3 miles from Duke) and traffic heading north can also be impacted. I can't imagine trying to get to Alexandria hospital under any of the options proposed. Even the mayor in a WaPo article earlier this year admitted that under the current roadway design we have today that he and his wife had difficulty getting to the hospital in time for a child birth!

The bike lobby has tried to paint us as pro-car and anti-bike in their efforts to push through these designs. Let me remind you who lives here. Many of us desire better mobility alternatives like cycle "protected" infrastructure, but taking car lanes away to add painted "shared" lanes or what industry experts call "suggested lanes" because they offer "zero" protection for riders is merely an exercise of "checking boxes" to say we are adding bike lanes. If the city was serious about adding bike infrastructure they would be designing it ironically for the citizens of Central Alexandria and not a small group of "road warriors" whose threshold for protection are much lower than the average resident. Just who are we building these bike lanes for anyway? Does Alexandria want a true bike culture where people of all ages can enjoy riding a bike and ditching their cars? If the answer is yes, then you aren't asking us what we want. Research and best practices show (see our website above) that cities like Vancouver and Portland are building bike infrastructure that they say rate "AAA" to ensure a level of protection that will provide what most residents need to get out and bike. This research further shows that not providing such protections will never grow demand for biking.

We also support pedestrian safety, which I refer you to the various correspondence issued previously from the civic association presidents in Central Alexandria. We are still waiting for improvements requested several years ago to protect kids on streets where cut through is the worst as they go to and from school. As for the improvements for pedestrians presented for Seminary Road, so long as it doesn't reduce four lanes such improvements are welcome.

Lastly, the city is updating its Master Transportation and Mobility Plan. If you read the current plan there is ZERO discussion of strategy to address the epidemic of cut through in Alexandria. What is worrisome is that we've been told there will not be any in the new plan either. This is madness. The very idea that the vision described in the old plan will come to life in an era when cut through congestion is this bad and projected to get worse only proves that it is a pipe dream. Congestion volume will kill all of their rosy transit, bike, and pedestrian plans.

There is no "real collaboration" with citizens to develop such an important plan. When I mean collaboration I mean more than a couple of "nights out to brief citizens." I mean actually having citizen representatives on these planning groups charged with creating the new plan.

There is no interest by the city to study best practices in any area of mobility. In fact, when asked the city says "that's why we hire consultants".... well, I work for a consultancy and relying 100% on

consultant advice without a review of cases that measurably address traffic and mobility challenges is at best lazy.

There is no understanding of what is needed to develop and nurture a real bike culture in Alexandria that promotes cycling for all ages. So let's stop cozying up with WABA and spend more time with the people who pay property taxes in Alexandria.

Finally, if you aren't familiar with the Greater Washington Partnership (major corporate employers in the region) you should study their vision and plan for regional transportation and mobility. It should be required reading.

Our community wants safer streets. We want other mobility options that promote them without taking away and making less safe driving by car. We need protection from cut through traffic.

We welcome the chance to be co-creators for Alexandria mobility options that build community life. This project is NOT that.

Thanks,

Peter Turner



**From:** Jeffrey Schnur <schnurjm@gmail.com>  
**Sent:** Wednesday, June 19, 2019 1:21 PM  
**To:** Bob Garbacz <bob.garbacz@alexandriava.gov>  
**Subject:** Seminary Road

To: Mr Bob Garbacz

From: Jeffrey Schnur

1734 Stonebridge Rd

Alexandria, VA 22304

(703) 566 6886

Subject: Seminary Road Diet

Dear Mr. Garbacz;

I will try to keep this brief and to the point, using bullets:

1. I am a 60-year-old residence of Alexandria, have been for over 18 years.
2. I am a former competitive cyclist that rides his bicycle on a near daily basis – both to-and - from work at the Washington Navy Yard, or for recreation.
3. Seminary Road is identified via the Strava app on my phone as one of my most ridden segments over the past three years.
4. I ride my bikes on most every road in the area that does not end in a, “5” (I-395, I-495). I ride on Quaker Lane up from Duke Street; I ride up King Street – down and up Janneys – then Seminary home as part of my regular commute. I ride all over Northern VA, The District, and Maryland around Great Falls; from my home.
5. Even though I may be a bit slower than in my formative racing days, I still have the skill set of an advanced rider.
6. Because of # 2 and # 5 above, it is my opinion that I am in an acute minority of cyclists that can safely transit Seminary Road between Quaker Lane and Howard Road, and beyond. I do not share my lane when cycling with an automobile, as to do so is unsafe.

7. I recently had a catastrophic mechanic failure on one of my bikes in front of the MacArthur Elem School. My back wheel was stripped of five spokes and my bike came to an abrupt stop from a chain malfunction. Since I was in the area in front of the school, I was able to move to the sidewalk and call for assistance. If this had happened a minute or two later while riding UP the hill from Quaker along Seminary with no sidewalk, I would have been in the right traffic lane with no easy escape from the cars speeding by. When a car breaks down, the driver is still protected. When a bike breaks down on a shared road, the cyclist is more at the mercy of the car drivers.

8. In order to make Seminary road more, "Bike Friendly," to the general public (including elementary school age children riding to MacArthur Elementary now that the range of that school has been expanded, and to encourage cycling to get to Hammond Middle School), not only does Seminary Road need to be repaved, but action needs to be taken to make this stretch of road as safe as Janneys Lane.

9. There are no easy answers to the issues surrounding improving Seminary Road, only informed compromises based on intelligence and experience. I wish you well as you try to balance all the competing sides of this issue.

Sincerely,

Jeffrey Schnur

From: Douglas Anderson <dougandmary@me.com>  
Sent: Wednesday, June 19, 2019 12:48 PM  
To: Bob Garbacz <bob.garbacz@alexandriava.gov>  
Subject: Seminary Road

Dear Mr. Garbacz,

I am writing in support of the plan to narrow Seminary Road. My support of this plan is based on my own personal experiences. Years ago I was very upset when Janey's Lane was narrowed. What I discovered during the intervening years is that narrowing the Janey's lane has had little to no impact on my ability to drive in the city, but has had that stretch of road significantly better from a pedestrian/biker perspective. Consequently, while I understand that my pro-road diet perspective reflects a distinct minority, I believe that it reflects a view that will yield a more livable city.

Thank you for taking the time to consider my opinion.

Respectfully,  
Doug Anderson  
1400 Trinity Drive

**From:** Laura Plaze <plaze@comcast.net>  
**Sent:** Wednesday, June 19, 2019 10:30 AM  
**To:** Bob Garbacz <bob.garbacz@alexandriava.gov>  
**Subject:** Seminary Road -- June 24 meeting

Dear Mr. Garbacz –

As a resident of Alexandria and a frequent traveler along Seminary Road from Janney's Lane to reach Burke Library, medical offices at Kenmore Avenue, Inova Alexandria Hospital for outpatient and emergency room services as well as shopping and professional services further west, **I strongly support maintaining all four lanes of traffic in both directions at all times on Seminary Road.** As you know, Seminary is a major east/west arterial road and it defies understanding that staff is recommending any reduction whatsoever in its capacity to move traffic as smoothly and with as little congestion as possible. Quite simply, reducing lanes for car traffic along this road is a terrible idea.

Where safety for pedestrians is an issue, I fully support making improvements to sidewalks and crosswalks and whatever else can be done to improve pedestrian safety. As a cyclist, I have ridden from my home out Seminary many times and although it is not a pleasant ride – riding on busy roads is never pleasant – I do not support reducing lanes for car traffic in order to accommodate bicycles.

Please add my comments to the record for the Traffic and Parking Board meeting scheduled to consider this matter on June 24<sup>th</sup>.

Thank you –

Laura Plaze

402 Cambridge Road

Alexandria, VA 22314



**From:** Mark Shiffer <mshiffer@gmail.com>  
**Sent:** Wednesday, June 19, 2019 9:18 AM  
**To:** Bob Garbacz <bob.garbacz@alexandriava.gov>  
**Subject:** Traffic and Parking Board 6/24 docket

Hi Bob,

Please forward these email comments along to the board. I also intend to speak at the board meeting on 6/24.

--

I am strongly opposed to the plan currently proposed by T&ES to reduce the number of lanes on Seminary Rd to 3.

If the city is going to reduce capacity of roadways, there should be a compelling reason, or that capacity should be replaced by an equally accessible mode of transportation. Neither of those conditions have been met with Seminary.

T&ES initially made the argument that Seminary was a "high KSI" corridor. Their own data refuted this claim and they backtracked. Similarly this cannot be framed as an environmental issue (i.e. an attempt to get people out of their cars) as no viable alternative has been proffered.

Ultimately, the proposal removes capacity solely for the goal of removing capacity. In doing so, T&ES has not taken the time to study the impact on the surrounding neighborhoods of cut-through traffic. Seminary is one of the few arterials in the city that actually moves traffic. King St backs up from the metro station, to Janeys Lane and occasionally beyond. West Taylor run is usually backed up to Janeys Lane. Cambridge and Yale as well. Reducing the carrying capacity of Seminary will most likely drive more cut through traffic through other neighborhoods further impacting quality of life of the families living in these residential areas.

I stand with the majority of residents who believe that common sense safety improvements should be made to Seminary including crosswalks, pedestrian flashing lights, and reduction of lane size to reduce speeding. Reduction in lane size provides a sizeable buffer for the southern sidewalk and can accomodate a shared pedestrian/bicycle lane for the limited non-car traffic to use.

Maintaining the four lanes retains capacity while still allowing the city to pursue goals of improvements for other modes of transportation. Unfortunately, due to the nature of this area and the areas Seminary connects (the mark center and Maryland), it is simply not feasible for the vast majority of drivers who transit Seminary to use other transit options.

I urge the board to reject this plan and request the city to design a proposal that improves safety and access while maintaining existing capacity. If not, the board should request the city to further study the likelihood and impact on surrounding neighborhood streets of increased cut through traffic.

Sincerely,

Mark Shiffer

**From:** deborah <daconlan@synaxis.to>  
**Sent:** Monday, June 24, 2019 11:10 AM  
**To:** Bob Garbacz <bob.garbacz@alexandriava.gov>; Christine Mayeur <christine.mayeur@alexandriava.gov>  
**Subject:** Proposed Changes to Seminary Road

Dear Mr. Garbacz, Ms. Mayeur and Members of the Traffic and Parking Board –

I do not support any reduction from 4 lanes on Seminary Road. My reasons have been documented by others' feedback.

However, I would like to make a point that I don't feel has been adequately addressed during this discussion:

**I do not support the proposed dedicated 'Right Turn Only' traffic lane at the Seminary/Quaker intersection without an accompanying 4-6 pm 'No Left Turn' sign at the Trinity/Quaker intersection. A 'Right Turn Only' vehicle lane will exacerbate the backup traffic at the Quaker/Duke intersection.** This in turn will create even more cut through traffic dangers for vehicles that turn off Quaker and onto Trinity. The City's CATS project identified Trinity as an already high traffic cut-through route and included a recommendation to test 4-6 pm 'No Left Turn' signage. *(Staff's recommendation was subsequently withdrawn.)*

**As a side note over 4 years ago** Central Alexandria residents spoke with the City through Mr. Garbacz' coordination regarding residential impacts from cut through traffic. At that time (and before it) the two traffic bottlenecks documented were the **Quaker/Duke intersection** and the one-lane access ramp from Duke onto Telegraph. These have never been resolved. While they are obviously not part of the Seminary Repaving project, the impact of revising turn lanes certainly must be considered when the City is proposing bringing more traffic to the existing Quaker/Duke intersection backup.

Sincerely,

Deborah Conlan

306 Princeton Blvd

Alexandria, VA 22314

# Memorandum

**To:** Traffic & Parking Board, City of Alexandria  
**CC:** Robert Garbacz, P.E., Division Chief, T&ES  
**From:** Owen P. Curtis, 5465 Fillmore Ave., Alexandria, VA  
**Date:** 6/24/2019  
**Re:** Docket Item 9, Seminary Road Complete Streets

---

**Recommendation:** Reject the Staff recommendation, and maintain four lanes (Alternative 1) from Quaker Lane to Howard Street.

I am a transportation planning engineer with 40+ years of experience consulting to communities with transportation issues, and a 40+ year history of involvement with such issues in the City (see brief bio at the end). Having reviewed the material prepared by staff regarding the Seminary Road project, I see a failure to consider three ramifications of their recommended approach:

- Transportation planners learned a long time ago that to move people efficiently and safely in a system, it was important to provide options for multiple modes within the public right-of-way, while not degrading the safety or efficiency of any mode. It is laudable to provide for the missing sidewalk for pedestrians along the Seminary's property, but it should be done without sacrificing the safety and efficiency of Seminary Road to move buses, cars, and bikes. The three-lane proposal lacks sense in that it is a short-term answer to a problem that can be solved with the building of a proper sidewalk. It degrades the overall system, used by the many, for a real but small benefit for the few. That is not sound transportation planning or policy.
- The reduction in the speed limit on Seminary Road from 35 mph to 25 mph reduced the desirability of that road for vehicles, as people look to minimize travel time. The three-lane segment will further degrade traffic operations, and send more drivers into the neighborhoods, seeking ways around that problem. The communities along Seminary Road already have enough cut-through traffic, and the staff recommendation will simply make that worse. Staff should beware the unintended consequences of what otherwise seems like a good idea ... providing a missing link of sidewalk.
- I find it interesting that the staff's graphics do not show anyone walking in the 6 – 7 foot "buffer" on the north side, which is apparently how the missing sidewalk is to be replaced. It strikes me as not a very safe alternative at all. Who is really

June 24, 2019

going to want to walk that close to moving traffic, without even the protection of a curb and grassy buffer, but rather just a thin plastic bollard?

There are a few good ideas from the staff, i.e., better, safer crosswalks and flashing signs at bus stops (such as the one installed several years ago on Van Dorn Street between Kenmore Ave. and Sanger Ave.). Those should be approved.

I urge you, though, to reject the three-lane concept. I urge you to request that the City staff work with the adjacent property owner (the Seminary) and search the City budget to find the money to complete the sidewalk properly, with an appropriately wide green buffer, safely adjacent to a four-lane Seminary Road.

Thank you.

Owen P. Curtis

Bio: Owen Curtis is an independent transportation consultant with 47 years of multimodal experience. A considerable portion of those years was spent advising communities on how to create safe, affordable, efficient transport options in a multimodal system. Mr. Curtis has lived in the City of Alexandria since 1976, and has been active in civic affairs regarding transportation the entire time. He was a member of the City's Transportation Planning Board for 12 years, and its chair for six. He was a member of the Master Plan Task Force, chairing the Transportation Subcommittee. He served on the Task Force that created the DASH system. He was involved with both the Seminary West and Beauregard Small Area Plans, and with the BRAC project. He is a Fellow of the Institute of Transportation Engineers (ITE), and a member of both the Washington DC and Virginia Sections of ITE, and is a Past President of the latter section. For ITE, he co-chaired the committee and helped author the *Recommended Practice for Planning Urban Roadway Systems* in 2011. This document provides guidance to cities such as Alexandria to implement Complete Streets in a systemwide context, and not on a roadway-by-roadway basis as Alexandria is doing.



Hi William,

Hope you had a nice weekend and looking forward to seeing you this evening! If you have a few minutes to talk prior to the meeting (even just a few minutes before), please let me know. There is nothing urgent or late-breaking, but I did want to make sure to touch base on some process items because I finally had a chance to talk with the City Attorney's Office.

First, and most importantly, to summarize our discussion from last week: **Per City Code Sec. 5-8-3(f) the Board is making an advisory recommendation regarding the technical merits on the installation of traffic signals and changes to the flow of traffic. Although the Code grants authority for this decision with the Director, I am reverting that authority back to City Council. This is primarily to ensure there is clarity of process since this issue has generated an exceptional amount of input.** I can explain this at the outset of tonight's meeting, or you certainly can do so if you prefer.

Second, I am aware of the memos/emails from Council at the end of last week, so I wanted to be sure you are okay there. It sounds like you have everything under control.

Third, I wanted to do a quick check in on the process for what to do in the event of a deadlock (I know we were down to five members as of Friday; I am not sure if that has changed) and on a "recess" in the event the meeting goes very late. Bottom line on these things:

- **Deadlock:** In the event that we do end up with six members tonight and the Board is divided 3-3, the City Attorney advises that the cleanest approach is to allow a deadlocked motion to die and then request an alternate motion. In the event of a deadlock, the Board would need to continue debating/negotiating until it gets a motion it can approve. If it cannot approve a motion, then it would need to defer the item until the following meeting when there would be an odd number of members present to vote.
- **Recess:** If the meeting has a very large number of speakers and the hour is getting very late, the Board could opt to recess the meeting. The City Attorney advises there are three possible approaches to this, shown below in order of preference (#1= most preferred, #3= least preferred):
  1. Continue with the meeting until all speakers are heard and the Board renders a decision.
  2. Defer the item and return to it (including public re-posting) the next regularly scheduled Traffic and Parking Board meeting
  3. Recess the meeting to a date-certain time. The Board would need to choose tonight an acceptable time to return and agree tonight to the date and time for the recessed meeting to continue. In this case, the City Attorney's Office also notes that members who were not present for tonight's meeting could also rejoin the meeting and vote. There is an expectation that members who are not there tonight would review the meeting recording/video.

I know you have been talking with Bob and Hillary and it sounds like everything is fine. I also wanted to make sure you don't have any late-breaking concerns.

Thank you,  
Yon

Request Id	Problem Code	Date Initiated	Description	Category	Details
146765	SIGTRAFFIC	05/10/2018 10:32	Traffic Signals - Complaints About Timing	TES_TRAFFIC_ENG	Please let us know which signalized intersection you are commenting on. "On ramp to 395 South from Seminary Rd. "What problem have you observed? "The metered red light is delayed causing backups all the way back onto Seminary Road. Sometimes the light stays red for 7 seconds, other times the green light stays green for 7 seconds and no one knows what to do."The metered red light is delayed causing backups all the way back onto Semin [See Existing Comments for complete initial description.]
147117	STRTPOTHLERPR	05/14/2018 03:21	Streets - Potholes	TES_STMAIN	Where is it located? "In the road"Is it impacting traffic flow? "YES"Please describe the location "ENTIRE North Howard Street"Entire stretch of North Howard Street (from 200 block) to where it intersects with Seminary Road, requires repaving! There are potholes and uneven pavement the entirety of the street. North Howard is a two-lane street. Drivers SWERVING car tires to miss hitting potholes and uneven payment is just a d [See Existing Comments for complete initial description.]
147389	SIGTRAFFIC	05/17/2018 10:35	Traffic Signals - Complaints About Timing	TES_TRAFFIC_ENG	Please let us know which signalized intersection you are commenting on. "N Pickett St and Seminary"What problem have you observed? "Still waiting forever for the light to change during off-hours"We've been complaining about the traffic light at this location for over a year now ... The entire neighborhood is fed up with it. Is there a way to make it flash yellow during the off-hours? Right now, the light skips a rotation [See Existing Comments for complete initial description.]
147479	PMRKNEW	05/18/2018 09:16	Traffic Markings - Request for New Marking	TES_TRAFFIC_OPS	Where is it located? "395 and Seminary intersections"Describe repairs needed. "paint lines on intersections"I've lived here since September and I've almost been hit at this intersection over 10 times. I can recall each of them. Since people apparently do not know that if there are 2 left turn lanes that they need to turn into their respective lane, I think that painting lines down would not only be beneficial but SAFE. Today I was a [See Existing Comments for complete initial description.]
147653	STRTPOTHLERPR	05/21/2018 09:55	Streets - Potholes	TES_STMAIN	Where is it located? "Along the curb"Is it impacting traffic flow? "NO"Please describe the location "Seminary Rd to Beauregard St slip lane "There are at least two potholes on the Seminary Rd to Beauregard St slip lane going south on Seminary to west on Beauregard. One of the potholes keeps getting deeper and deeper. At night it could be hard to see and cause some damage if someone hit it. So I am reporting it again as it hasn't been fixed yet over potholes have been.
147696	STRTPOTHLERPR	05/21/2018 11:27	Streets - Potholes	TES_STMAIN	Where is it located? "In the road"Is it impacting traffic flow? "YES"Please describe the location "Leftmost turning lane from I-395 North onto Seminary Road West."The area now has two major potholes, one from earlier and this new one making it difficult to drive on the leftmost turning lane onto Seminary Rd. West, from the I-395 N exit ramp.
149642	SIGBULBOUT	06/11/2018 03:35	Traffic Signals - Bulb Out	TES_TRAFFIC_OPS	What is the color? "Red"What direction were you heading? "Janney's lane from Seminary "The traffic light turns green once every 5 cycles. Traffic is horribly backed up.
150303	STCLNGENERAL	06/19/2018 01:15	Streets - Cleaning Complaint	TES_STCLEAN	What is the nature of your complaint? "Garbage on I395/Seminary Rd overpass"Hello! I'd like to report a concern about piles of garbage left on the overpass over I-395 at exit 4 (Seminary Rd). It looks like the garbage gets swept into piles, but the piles are left on the overpass and not picked up. They pose a public health hazard and defile the outlook of our city.
150686	TRAFENG_COMPLETE_ST	06/24/2018 11:56	Traffic Engineering - Complete Streets Issue	TES_TRAFFIC_ENG	What type of sign is it? "Other"Please describe the sign you are requesting "No Thru Trucks sign requested"6.24.18This is my second request for a No Thru Truck sign for N. Jordan St. at Seminary Rd. I have not heard back from my first request.Carolyn Griglione
151030	SGNNEW	06/28/2018 07:17	Signs - Request for New Traffic Sign	TES_TRANSPLN	Please consider adding a pedestrian cross walk at the entrance of Ft. Ward Park. Families and children frequently cross mid-block. The only crosswalks currently are at the intersections of streets east and west of the park's entrance.ThanksJoe Franklin
151144	STCLNGENERAL	06/29/2018 10:00	Streets - Cleaning Complaint	TES_STCLEAN	Caller states that there is a pile of mulch and rocks the location is between 801 n howard st and seminary rd
151154	ROW_ISSUES	06/29/2018 11:24	ROW Access and Construction Issues	TES_ROW	Good morning Mayor Silberberg,I am the General Manager at The Olympus Condominiums, a high rise condominium complex located at 6301 Stevenson Ave, Alexandria, VA 22304. I seek your office's assistance with an ongoing issue regarding the missing highway sound barrier wall. This wall was taken down due to a car accident in December 2017 and missing since. Our community is greatly affected by this, the amount of trash, pollution and [See Existing Comments for complete initial description.]
151297	PMRKREMOVAL	07/2/2018 09:28	Traffic Markings - Removal	TES_TRAFFIC_OPS	What type of marking is this? "Other"Please describe the marking "No Right Turn M-F 4-6pm"Recently the city started to restrict through traffic on East Taylor Run which put up signs that restrict right turns onto the Duke access road Monday through Friday between 4pm and 6pm. I live in this neighborhood and I want my access to Duke returned. Please remove the restriction signs.
151418	SGNRMVAL	07/3/2018 09:41	Signs - Request Removal of Traffic Sign	TES_TRAFFIC_OPS	What type of sign is it? "Other"Is it a construction site? "NO"Is the sign on city or private property? "City"Is it residential or commercial? "Residential"What is the reason for removal? "Restricts Residential Access to Duke Rd"Please describe the sign "No Right Turn M-F 4-6pm"Recently the city started to restrict through traffic on East Taylor Run which put up signs that restrict right turns onto the Duke access road Monda [See Existing Comments for complete initial description.]
151544	PMRKFADE	07/5/2018 11:48	Traffic Markings - Faded	TES_TRAFFIC_OPS	What type of marking is this? "White Line"Please describe the marking "Lines need to be repainted"The actual location I am referring to is the on-ramp to I-395 Northbound off of Seminary Rd (and Beauregard). There are two left lanes here that need to be repainted. I constantly see people moving to the left thus illegally crossing over to the lane to their left. Recently a police officer tried to give me a ticket when I was pushed [See Existing Comments for complete initial description.]

151550	TRAFENG_CMPLT_ST	07/5/2018 12:42	Traffic Engineering - Complete Streets Issue	TES_TRAN SPLN	Open letter to the Mayor, City Council Members and Residents of Alexandria I am writing about the City's desire to reduce Seminary Road to two lanes. I retired from National Geographic as Safety and Facilities Manager and fully understand the need for safety. I worked with the Department of Homeland Security and other federal and local agencies on several issues. During my 35 years of employment, I learned that there are ways to achieve [See Existing Comments for complete initial description.]
151793	SGNFADDMD	07/9/2018 09:04	Signs - Faded/Damaged/ Twisted Traffic Sign	TES_TRAFFIC_OPS	CURB LINE DOWN BUS STOP SIGN & POST
152055	TRAFENG_CMPLT_ST	07/11/2018 01:54	Traffic Engineering - Complete Streets Issue	TES_TRAFFIC_ENG	Dear Mayor Silberberg and Members of City Council, Recently my neighborhood "Next Door" list serve has had a robust discussion concerning the "Safe Streets" initiative as it relates to a section of Seminary Road. I would like to offer a few observations and comments directly for your consideration. 1. A very dangerous right turn across oncoming traffic off the 395 ramp at Seminary is permitted onto Kenmore Avenue. This makes no sense [See Existing Comments for complete initial description.]
152179	STRLIGHTOUT	07/12/2018 11:55	Street Light Outage Report	TES_TRAFFIC_OPS	What is the problem with this street light? "Off" Is there any physical damage to the light? (e.g. cover is broken, bulb is broken out, wires hanging) "No" Has the pole been knocked down? "No" Streetlight Owner: "DOM" There are a number of street lights that are not working on N Jordan St between Peacock Av and Seminary Road. The sidewalk along N Jordan St is very, very dark at night as a result and makes walking very difficult. Thank you [See Existing Comments for complete initial description.]
152317	TRAFENG_CMPLT_ST	07/15/2018 06:47	Traffic Engineering - Complete Streets Issue	TES_TRAFFIC_ENG	I have lived in Alexandria as a homeowner in the Taylor Run neighborhood for fourteen years. I am writing to you to offer one suggestion regarding the ever-growing through traffic problem, which is a source of extreme anxiety and discontent for some Alexandria City residents. This is not a letter of complaint, because I'm sure that you are well aware of the high volume of traffic by commuters cutting through my neighborhood to access 395 [See Existing Comments for complete initial description.]
152318	STRTRPR	07/15/2018 07:25	Street Repair	TES_STMAINT	Where is it located? "In the road" Is it impacting traffic flow? "YES" Please describe the location "Seminary Road between Ft. Williams Pkwy and Beauregard St" I understand that there are complicated decisions pending for Seminary Road. But many of us who live there, or need to get to the St. Stephens School, Episcopal Seminary or Alexandria Hospital, or the Brac Building, or Kenmore Medical building or access 395 also travel [See Existing Comments for complete initial description.]
152376	SIGPROBDETECT	07/16/2018 11:25	Traffic Signals - Vehicle Detection Problem	TES_TRAFFIC_OPS	Caller states that it took about 5 mins before the light turned green
152488	TRAFENG_CMPLT_ST	07/17/2018 02:08	Traffic Engineering - Complete Streets Issue	TES_TRAFFIC_ENG	Please provide a description of this problem "frequent use of jake brakes eastbound on Seminary, stopping at Beauregard" Please provide specific information regarding the location of this problem "approx. 500 feet west of Beauregard intersection on Seminary" If you have information about the party responsible for this problem, please provide it here. "Mostly dump trucks, but several large vans. This problem occurs multiple times daily" [See Existing Comments for complete initial description.]
152667	SIGPROBDETECT	07/19/2018 08:13	Traffic Signals - Vehicle Detection Problem	TES_TRAFFIC_OPS	Caller states that the left turn signal at that intersection won't come on
152869	TRAFENG_CMPLT_ST	07/22/2018 09:16	Traffic Engineering - Complete Streets Issue	TES_TRAN SPLN	Greetings, I feel it is imperative to keep Seminary Road four lanes wide. It is a heavily trafficked road in both directions at all hours of the day. The proposal to whittle it down to one lane in each direction is a very bad idea. There is a hospital and fire station on that stretch of the road and we need to keep those lanes open for emergency vehicles. The narrowing of Seminary Road would cause no end of headaches to residents [See Existing Comments for complete initial description.]
153072	TES_CMPLTSTRTS	07/23/2018 03:46	Complete Streets Requests	TES_TRAN SPLN	Good afternoon, Mayor, Vice Mayor and Council; I would like to thank the members of Council who responded to my comments on Call-Click-Connect. Some members stated that they are unable to open the link on Next Door Kenmore's showing the posting concerning the changes to Seminary Road. If you copy the below link and copy it into the address bar, it should take you to the webpage. If this does not work, I can cut and paste the message [See Existing Comments for complete initial description.]
153245	TREE PROBLEM	07/24/2018 08:18	Tree Problem / Request	RPC	What is your tree request? "Tree Removal" Where is it located? "On the Street" Hello, We have a tree behind our house that is on the street and it is very wobbly when it storms. I do not want to risk it falling on our house. It faces my children's room and I do not feel like it is safe. Can we get someone to please remove it? I appreciate the assistance. Regards, Narmeen
153505	SGNMISSING	07/27/2018 05:00	Signs - Missing Traffic Sign	TES_TRAFFIC_OPS	Are you requesting a new sign or is the sign missing? "Missing" What type of sign is it? "Other" Please describe the sign "Right Turn Only sign is missing from the post. It has always been there." The Right Turn Only sign is missing from the pole. At the present time the little sign that says, 'Except Buses' is the only sign on the pole. Please put the Right Turn Only sign back on the pole. This needs to be very clear to drive [See Existing Comments for complete initial description.]

153531	TREE PROBLEM	07/28/2018 11:55	Tree Problem / Request	RPC	What is your tree request? "Tree Pruning"Where is it located? "Other"I see that on July 9, someone sent a comment about my complaint. The tree/bush growth on Beauregard between Fillmore and Seminary Road is out of control over the sidewalk and is forcing walkers to walk on the edge of the grass or in the street to bypass that area. It has been like that for months and should have been taken care of a long time ago. I keep waiting [See Existing Comments for complete initial description.]
153896	SDWRPR	08/1/2018 06:06	Sidewalks - Repairs	TES_STMAIN	Where is it located? "5205 Seminary Road"What is the sidewalk material? "Concrete"Please describe the damage "A section is raised by along a crack by about 3/4 inch - enough to trip over"It's a crack where one side is about 3/4 inch higher than the other. It's just high enough to trip on.
154027	SWRMANHOLE	08/3/2018 08:50	Sewers - Manholes	TES_SEWERS	Where is it located? "Seminary Rd and N. Ivanhoe St."Does it cause parking problems? "NO"Is it causing drainage problems? "YES"8.3.18This request -*****Request Details: Approximate Address: 1425 N IVANHOE ST (See map below) Request ID: 152883 Request Type: Streets-Curb and Gutter Repair Request Description: Where is it located? "gutter" Does it cause parking problems? "NO" Is it causing [See Existing Comments for complete initial description.]
154309	SWRCHCK MAIN	08/7/2018 10:20	Sewers - Request Inspection	TES_SEWERS	APD DEC Operator #4117 reported that hydraulic fluids is going into the storm drainage.
154435	TRAFENG_COMPLETE_ST	08/8/2018 02:50	Traffic Engineering - Complete Streets Issue	TES_TRAFFIC_ENG	What type of sign is it? "Other"Please describe the sign you are requesting "Speed limits/radar"Per Fairfax County, the following as an idea for the City:At our meeting on July 31, the Board of Supervisors unanimously approved my motion to investigate the costs associated with procuring pole-mounted radar signs with data collection capability for both the Fairfax County Police Department and our Department of Transportation (FCDO [See Existing Comments for complete initial description.]
154412	ENVQLTYWATER	08/8/2018 10:10	Water Quality - Creeks, River & Storm Water	TES_SSINF	Williams Construction had a crane on site that spilled hydraulic oil. Most of it was caught using absorbent material by the fire department. Atlas Environmental was called to come clean up and flush the storm lines and recover hydraulic oil that went in the storm lines.
154779	TREE PROBLEM	08/13/2018 03:21	Tree Problem / Request	RPC	What is the nature of your complaint? "Overgrown vegetation"The vegetation along Jordan St. from Seminary Rd to Howard need to be cut back and cleaned up. There are many dead branches overhanging the street, and the vegetation encroaches on the street and sidewalk. Please remove the vegetation at the north corner Jordan St and Juniper Pl where the target is indicated as the vegetation creates a blind spot for pedestrians and vehicles [See Existing Comments for complete initial description.]
154830	STCLNGENERAL	08/14/2018 09:22	Streets - Cleaning Complaint	TES_STCLEAN	What is the nature of your complaint? "Storm drain needs to be cleaned"8.14.18This is my third request to have the storm drain at the corner of N. Ivanhoe St. and Seminary Rd. cleaned. Attached is a picture of the situation.Please get on this request.Thanks
154846	STRTPOTHLERPR	08/14/2018 10:10	Streets - Potholes	TES_STMAIN	Where is it located? "In the road"Is it impacting traffic flow? "YES"Please describe the location "Howard St between N Jordan St and Seminary Rd"Hi, There are literally dozens of potholes on Howard between Seminary Rd and N Jordan. When will these be attended to? Driving down the hill my car almost went off the road because I hit a pothole. The road is in terrible shape and needs to be completely repaved between Seminary and N. Jordan.
155094	TES_CMPLTSTRTS	08/16/2018 03:56	Complete Streets Requests	TES_TRANSPLN	Please Choose a Complete Streets Topic "Traffic Calming"It appears the City has decided to add speed bumps to the northern section of Jordan St. between Seminary Rd. and Peacock Ave. If so, please provide me all the pertinent details leading up to this decision, as well as answers to the questions below.Thanks,Jim Allgood703-212-92571) Prior to this decision, did the City directly contact property owners directly affected [See Existing Comments for complete initial description.]
155282	STRTPOTHLERPR	08/20/2018 08:41	Streets - Potholes	TES_STMAIN	Where is it located? "In the road"Is it impacting traffic flow? "YES"Please describe the location "seminary and beauregard stop light"going east on Seminary Road (towards 395) - there are 2 potholes at the intersection of seminary and N. beauregard street. They are in the far right line right at the light (if you are the 1st car). they are slightly off to the right.I reported them once and they were filled. But they are re-appeared.
155481	TRAFENG_COMPLETE_ST	08/22/2018 07:53	Traffic Engineering - Complete Streets Issue	TES_TRAFFIC_OPS	Is it faded, twisted or damaged? "Faded"What is the damage? "lines on roadway worn away"What type of sign is it? "Other"Please describe the type of sign "lines on road indicating lanes for turning "PLEASE! re-Stripe these turn lanes from eastbound seminary to northbound 395 ramp! I've been in several near misses and aggressive driver situations because of the poor condition of the signage/line structure on this part of the road. [See Existing Comments for complete initial description.]
155904	SGNNEW	08/27/2018 04:11	Signs - Request for New Traffic Sign	TES_TRAFFIC_ENG	Caller would like to have intersection looked at or observed she was in an accident at this intersection in July. She thinks it should have a left turning light or an left turn only lane.
156235	SDWRPR	08/31/2018 09:47	Sidewalks - Repairs	TES_STMAIN	Metal protruding from sewer cover at what looks like eastbound Seminary, making the right onto Mark Center by the Hilton Hotel. It appears to be causing tire issues on buses. Operators complaining sharp steel is puncturing tires.
156722	SIGTRAFFIC	09/7/2018 12:49	Traffic Signals - Complaints About Timing	TES_TRAFFIC_ENG	Please let us know which signalized intersection you are commenting on. "Seminary Rd & Kenmore Ave"What problem have you observed? "This intersection is frequently blocking by vehicles turning left from Seminary Rd onto Kenmore, who are either running the red light or getting stuck in the intersection when the light turns red."Vehicles turning left from east bound Seminary Rd onto Kenmore regularly run the red light, holding up traf [See Existing Comments for complete initial description.]

156806	RPCA_PRK MAIN_W	09/9/2018 01:32	Park Operations	RPC	9.9.18The curb area at Seminary Rd. and N. Beauregard has waist-high weeds growing. These need to be removed. This is my second request on this issue. Why is this taking so long?If this request needs to go to another department please let me know or forward to that department.Carolyn
156799	TREE PROBLEM	09/9/2018 11:54	Tree Problem / Request	RPC	What is the problem with this street light? "Off"Is there any physical damage to the light? (e.g. cover is broken, bulb is broken out, wires hanging) "Yes"Has the pole been knocked down? "Yes"Streetlight Owner: "DOM"There is serious problem with the trees falling onto vehicles and taking out power lines and utility polls on North Beauregard Street between King Street and Seminary Road. Back in June a tree fell on a metro bus: [See Existing Comments for complete initial description.]
156800	TREE PROBLEM	09/9/2018 12:00	Tree Problem / Request	RPC	What is your tree request? "Storm Damage"Where is it located? "On the Street"There is serious problem with the trees falling onto vehicles and taking out power lines and utility polls on North Beauregard Street between King Street and Seminary Road. Back in June a tree fell on a metro bus:https://www.nbcwashington.com/news/local/Tree-falls-on-Metrobus-486608311.htmland there's been several storms causing trees to take out ut [See Existing Comments for complete initial description.]
156993	TREE PROBLEM	09/11/2018 11:56	Tree Problem / Request	RPC	What is your tree request? "Other"Where is it located? "On the Street"CCC Request 156799There is serious problem with the trees falling onto vehicles and taking out power lines and utility polls on North Beauregard Street between King Street and Seminary Road. Back in June a tree fell on a metro bus:https://www.nbcwashington.com/news/local/Tree-falls-on-Metrobus-486608311.htmland there's been several storms causing trees t [See Existing Comments for complete initial description.]
157385	SIGPEDMLF	09/16/2018 09:33	Pedestrians - Crossing Signal Malfunction	TES_TRAF FIC_OPS	What is the problem? "Display Dark"Please describe the problem "Reported to me that student had to wait 20 minutes without getting an opportunity to cross Seminary Rd."As stated, this was reported to me.
157807	STRTPOTH LERPR	09/21/2018 08:02	Streets - Potholes	TES_STMAI NT	Where is it located? "In the road"Is it impacting traffic flow? "YES"Please describe the location "On ramp to 395 from Seminary Road"Agree with others comments about re-painting/clarifying lanes- this area can be dangerous. Also, the potholes in the far right lane are enormous and hazardous to drivers.
157896	SGNHITDW NLNG	09/22/2018 09:01	Signs - Hit/Down/Leaning Traffic Sign	TES_TRAF FIC_OPS	What type of sign is it? "Other"Please describe the sign "Speed sign"Sign is down. It is laying across the sidewalk. It needs to be immediately moved off the sidewalk for safety. People will have to walk in the street to get around the sign.The sign needs to be replaced immediately.Carolyn Griglione
157897	SGNHITDW NLNG	09/22/2018 09:06	Signs - Hit/Down/Leaning Traffic Sign	TES_TRAF FIC_OPS	What type of sign is it? "Other"Please describe the sign "speed sign"Speed sign is down on Seminary Rd. It is laying across the sidewalk. Looks like it was hit by a vehicle.It needs to be immediately moved off the sidewalk for safety. People will have to walk in the street to get around the sign.The speed sign needs to be replaced immediately. This is my second submission as I was not logged in the first time I sent this request and I want my request in my list.Carolyn Griglione
157921	TRAFENG_ COMPLETE_ ST	09/23/2018 11:45	Traffic Engineering - Complete Streets Issue	TES_TRAN SPLN	9.23.18Dear Mayor Silberberg,Just another example of why changes are necessary on Seminary Rd. This took place on Friday, September 21, 2018.I wanted to share this picture to show the need for reconfiguration of Seminary Rd. during the resurfacing project.At the September, 2018 SHA monthly meeting, Sgt Patrick Lennon indicated that ten recent vehicle crashes were single car crashes, i.e. the car ran off the road and stuck s [See Existing Comments for complete initial description.]
158543	SGNNEW	10/2/2018 08:57	Signs - Request for New Traffic Sign	TES_TRAF FIC_ENG	There is a 3 lane left turn here at Seminary and N Beauregard. The Solid White Line continues to be ignored by drivers everyday and they drive right through it in order to merge over to the far left turn or to continue straight down Seminary thus making it unsafe for those attempting to cross over the broken white line. I am requesting an additional sign be installed (I believe there is one right above the turn lanes) further before appro [See Existing Comments for complete initial description.]
158916	STRTRPR	10/5/2018 06:52	Street Repair	TES_STMAI NT	Where is it located? "Clover-College Park Neighborhood"Describe repairs needed. "Streets need paving"The streets in this area are in pathetic shape. It's an embarrassment. Streets are full of potholes, some of which are poorly filled (your repair contractor should be fired immediately), large cracks, and weeds and grass growing through the cracks. The streets look as if we live in Dog Patch, not historic, beautiful Alexandria, VA [See Existing Comments for complete initial description.]
159268	SIGBULBO UT	10/11/2018 08:12	Traffic Signals - Bulb Out	TES_TRAF FIC_OPS	Caller reported that the traffic light is out.
159523	REFGENER ALCOMPL	10/14/2018 06:31	Trash - General Complaints	TES_COLL ECTIONS	What is the nature of your complaint? "Removal of trash and lack of recycling bins - Holmes Run path"Please replace the trash receptacles that have been removed along Holmes Run Parkway path - either onto the concrete stands where they previously stood or on the street for easier accessibilty for trash trucks. Trash is beginning to accumulate in the park. In addition we also need blue recycling receptacles along this stretch, as [See Existing Comments for complete initial description.]
159547	SIGILLUMS RTNME	10/15/2018 03:04	Signs - Illuminated Street Sign	TES_TRAF FIC_OPS	At what intersection is the sign located? "Beauregard and Seminary"The lighted street signs at this intersection are out.
159558	PMRKNEW	10/15/2018 08:22	Traffic Markings - Request for New Marking	TES_TRAF FIC_OPS	Where is it located? "Seminary Road I-395 lower deck bridges"What is the sidewalk material? "Other"Please describe the damage "Street, not sidewalk. Desperately needs the lane indicators for turns re-marked. "The turn lane line markings have completely worn away, leading to those from the right turn lane feeling that they are entitled to turn into the middle of three lanes, when this is actually one of the two lanes that the lef [See Existing Comments for complete initial description.]



159679	TES_CMPL TSTRTS	10/16/2018 10:47	Complete Streets Requests	TES_TRAN SPLN	Mayor and City Council, I am writing to ask that the Seminary Road Complete Streets project be expedited to make this street safe as soon as possible. For multiple years, the neighbors have asked for improvements in the streets in the Central part of Alexandria. We have not had deaths, which tend to move these items forward, but it is nearly impossible to cross parts of this road (Eastern end). Working with the Seminary, we discover [See Existing Comments for complete initial description.]
160140	SIGBULBO UT	10/23/2018 06:02	Traffic Signals - Bulb Out	TES_TRAF FIC_OPS	What is the color? "Red" What direction were you heading? "AM HOV Offramp at Seminary Road" The signal at the top of the I-95 HOV On/Off ramp is stuck on red for those exiting the HOV onto Seminary. First noted on 22 Oct and again on 23 Oct at 5:20 AM.
160159	SGNHITDW NLNG	10/23/2018 09:57	Signs - Hit/Down/Leaning Traffic Sign	TES_TRAF FIC_OPS	Resident reported sign has two arrows that are hanging on one wire that needs to be corrected
160392	TRAFENG_ COMPLETE_ ST	10/25/2018 02:02	Traffic Engineering - Complete Streets Issue	TES_TRAF FIC_ENG	What type of marking is this? "Other" Please describe the marking "SEMINARY RD AND KENMORE AV" I contact Cindy and provided a some information to file a complaint and service request. 4700 block of Seminary Road and Kenmore Av heading toward Inova Alex Hosp. During the construction for the express lane, all neglected to create a design for vehicles exiting onto Seminary Rd East from 395 N as it as exist for years and no problem [See Existing Comments for complete initial description.]
160506	SIGILLUMS RTNME	10/28/2018 11:57	Signs - Illuminated Street Sign	TES_TRAF FIC_OPS	At what intersection is the sign located? "Seminary and Beauregard" Seminary sign is out.
160658	TES_CMPL TSTRTS	10/30/2018 07:58	Complete Streets Requests	TES_TRAN SPLN	Vision Zero at Seminary Road and Kenmore Ave The intersection of Kenmore Ave and Seminary Road should have its median removed, crosswalks added, and should become signalized. Turns (especially left turns) should be heavily restricted and only be open to buses or during off peak hours. Removal of the median at Seminary Road and Kenmore Ave would create drastic improvements to the pedestrian and transit fabric of the neighborhood. As [See Existing Comments for complete initial description.]
161212	STRTPOTH LERPR	11/8/2018 08:29	Streets - Potholes	TES_STMAI NT	Where is it located? "In the road" Is it impacting traffic flow? "YES" Please describe the location "Seminary Rd, btwn Howard and Quaker" The situation along the stretch of road between Howard St and Quaker, heading east, has become extremely hazardous and requires immediate attention. Large potholes are becoming larger.
161335	TES_CMPL TSTRTS	11/9/2018 12:52	Complete Streets Requests	TES_TRAN SPLN	What type of marking is this? "Crosswalk" Please describe the marking "Crosswalk with flashing lights" We need a crosswalk at this intersection as it is not possible to cross Jordan at this spot safely. The traffic coming down the hill from Seminary Rd. has a blind curve, and traffic also often speeds from the Howard intersection, before they get to the first speed cushion. The vegetation on the 902 Juniper Pl side of Jordan St makes [See Existing Comments for complete initial description.]
161436	STRTRPR	11/12/2018 10:12	Street Repair	TES_STMAI NT	Where is it located? "Seminary Road from Janeys lane to 395 circle" Describe repairs needed. "The road needs to be repaired, many potholes and rough road where the previous repairs were not effective and needing further repair. "Seminary Road needs to be fixed- a lot of potholes and the pavement is coming apart. Very rough road and getting worse. Even the circle over, 395 has many issues with pot holes and pavement coming apart.
161848	TES_CMPL TSTRTS	11/15/2018 06:45	Complete Streets Requests	TES_TRAN SPLN	Please Choose a Complete Streets Topic "Intersection" It's unclear which municipality "owns" this intersection of Seminary Rd and S George Mason Dr but it is very problematic. There needs to be 2 turn lanes to continue on Seminary for traffic going southeast. Traffic here, during evening rush hour, is an accident and road rage incident waiting to happen. There is only one turn lane to continue on Seminary and traffic gets very backed u [See Existing Comments for complete initial description.]
161971	TRAFENG_ COMPLETE_ ST	11/16/2018 04:07	Traffic Engineering - Complete Streets Issue	TES_TRAF FIC_ENG	Please Choose a Complete Streets Topic "Traffic Calming" You recently added traffic calming to Jordan between Duke and Seminary. This ignores the fundamental problem with this stretch, that there is too much traffic trying to get through a small road that isn't big enough. I ask that you consider removing all the the traffic calming, remove all street parking, add a turn lane, increase the width of the street above Fox Chase, increas [See Existing Comments for complete initial description.]
162068	TES_CMPL TSTRTS	11/18/2018 03:23	Complete Streets Requests	TES_TRAN SPLN	Please do not reduce Seminary Road from 4 lanes to 2 lanes and install bicycle lanes. I take the metro to work and must get into my car to pick up my daughter from school. I'm not going to be able to pick her up from school on a bicycle!
162181	STRTRPR	11/19/2018 07:22	Street Repair	TES_STMAI NT	Where is it located? "N. Howard Street between Taney Ave and Seminary Road (to Hospital)" Describe repairs needed. "street needs to be mulled and repaved" The road on N. Howard Street needs to be repaved, particularly between Taney Avenue and Seminary Road.
162365	SIGBULBO UT	11/23/2018 07:26	Traffic Signals - Bulb Out	TES_TRAF FIC_OPS	What is the color? "Red" What direction were you heading? "all" 11.23.18 The traffic light at the corner of N. Jordan St. and Seminary Rd. is blinking yellow and red. This started on Thanksgiving day, November 22 and still the case today November 23. This is a very dangerous and busy intersection. The lights need to be repaired pronto. We drove through it yesterday and we were the only driver who treated the intersection as a [See Existing Comments for complete initial description.]
162898	STRTPOTH LERPR	12/2/2018 12:15	Streets - Potholes	TES_STMAI NT	Where is it located? "In the road" Is it impacting traffic flow? "YES" Please describe the location "Area of INOVA Alexandria Hospital" 4300 Seminary Road, directly under the traffic signals intersecting with N. Howard Street and Seminary Road, where the signage is for INOVA Alexandria Hospital, there are MAJOR potholes. Drivers swerve vehicles to avoid hitting potholes which, if hit, may cause front end damage to vehicles. Drivers [See Existing Comments for complete initial description.]

163050	STRTPOTHLERPR	12/4/2018 01:46	Streets - Potholes	TES_STMAINNT	Where is it located? "In the road"Is it impacting traffic flow? "YES"Please describe the location "on kenmore ave between van dorn and seminary road (the segment of kenmore on the south side of seminary)"There is a speed bump in front of 4801 Kenmore Ave (the west building of Seminary Towers). Around the bump, the pavement is broken up. Every day, the pot holes get a little bigger.
163327	STRTPOTHLERPR	12/8/2018 06:15	Streets - Potholes	TES_STMAINNT	Where is it located? "In the road"Is it impacting traffic flow? "NO"Please describe the location "Beauregard St. from West Braddock going towards Seminary"Area from corner of West Braddock to corner of Seminary on North Beauregard (on side with NOVA garage) has a multitude of unavoidable active potholes that are large and deep enough to cause car damage and probably causing people to swerve to avoid them. These potholes need to b [See Existing Comments for complete initial description.]
163318	STRTPOTHLERPR	12/8/2018 12:20	Streets - Potholes	TES_STMAINNT	Where is it located? "In the road"Is it impacting traffic flow? "YES"Please describe the location "N. Beauregard street from King St. to Seminary Road has a multitude of unavoidable active potholes pot holes that is causing people to swerve into other lanes. "N. Beauregard street from King St. to Seminary Road has a multitude of unavoidable active potholes pot holes that is causing people to swerve into other lanes. These potholes need to be fixed or the road needs to be repaved.
163331	SIGBULBOUT	12/9/2018 10:41	Traffic Signals - Bulb Out	TES_TRAFFIC_OPS	What is the color? "Green"What direction were you heading? "West on Seminary"The protected left bulb from Seminary to Jordan is out. Cars have the protected left but do not know it.
163510	SIGPROBDETECT	12/12/2018 07:08	Traffic Signals - Vehicle Detection Problem	TES_TRAFFIC_OPS	What is the problem with this street light? "Other"Is there any physical damage to the light? (e.g. cover is broken, bulb is broken out, wires hanging) "No"Has the pole been knocked down? "No"Streetlight Owner: "DOM"The left hand turn signal light does not come on in the west bound direction. Cars are waiting instead of turning due to a green light only.Maintained by DOMINION ENERGY (pole #C0915KI0700).
164229	STRTPOTHLERPR	12/22/2018 09:01	Streets - Potholes	TES_STMAINNT	Where is it located? "In the road"Is it impacting traffic flow? "YES"Please describe the location "Seminary Road at I-395 heading SE direction"4 x potholes in center of Seminary road at I-395 overpass: 1 x pothole in far right lane of 3 lanes heading SE before crossing I-395; 3 x potholes in right lane of two lanes just past I-395 exit lane for Seminary road.
165507	TES_CMPLTSTRTS	01/11/2019 04:25	Complete Streets Requests	TES_TRANSPLN	Please Choose a Complete Streets Topic "General Inquiry"1.11.19I think I should have placed this message through CCC. I am now doing so.Carolyn Griglione703 370-065312.15.19Dear Darren,Hope all is fine in your neck of the woods.I have once again looked through the 72 page Central Alexandria Traffic Study and have a question.It appears that SOV traffic might be important in the TransUrban study. It was p [See Existing Comments for complete initial description.]
165510	TES_CMPLTSTRTS	01/11/2019 04:28	Complete Streets Requests	TES_TRANSPLN	Please Choose a Complete Streets Topic "General Inquiry"1.11.19I failed to send this through CCC. I am now doing so.Carolyn1.7.19Dear Darren,I hope the new year s beginning well for you.I want to mention my great worry as to how the Seminary Rd. Complete Streets project is being held hostage by TransUrban. Not only is the project at the mercy of TransUrban, TransUrban is moving steadily along with their plans [See Existing Comments for complete initial description.]
165511	TES_CMPLTSTRTS	01/11/2019 04:30	Complete Streets Requests	TES_TRANSPLN	Please Choose a Complete Streets Topic "General Inquiry"1.11.19I failed to enter this through CCC. I am now doing so.Carolyn1.8.19Dear Darren,I forgot to add this in my last message.How was the GIGANTIC Express Lanes sign approved? Who approved this? The impact to the residents across the street will be 24 hours a day 360 days a year. Were the neighbors informed about this sign and asked for input?If I fi [See Existing Comments for complete initial description.]
165532	STRTPOTHLERPR	01/12/2019 03:02	Streets - Potholes	TES_STMAINNT	Where is it located? "In the road"Is it impacting traffic flow? "NO"Please describe the location "Starting at 4238 Seminary Road area (near corner of Seminary and Howard St. - both sides of the roadway down to Virginia Theological Seminary"Potholes galore - Starting at 4238 Seminary Road area (near corner of Seminary and Howard St. - both sides of the roadway down to Virginia Theological Seminary are badly in need of repaving. To [See Existing Comments for complete initial description.]
165522	SGNNEW	01/12/2019 07:44	Signs - Request for New Traffic Sign	TES_TRAFFIC_ENG	1.12.19I am requesting a explanation as to how the GIGANTIC Express Lane sign has been constructed on Seminary Rd. on public property at the fire station.Who requested the sign be constructed at this location?Who gave approval for the sign to be constructed at this location?When was the request submitted?Does this signage meet City Code?Why was this location selected?Were community outreach meetings held?Were the neighbo [See Existing Comments for complete initial description.]
165604	STCLNGENERAL	01/14/2019 06:24	Streets - Cleaning Complaint	TES_STCLEAN	I need to understand why the city snow removal crew does not plow in front of the last two house on N. Gaillard St. (1027 and 1101.) We pay the same taxes as everyone else, but for some reason, you have decided that we are not worthy of having our section of the street plowed. We used to have wonderful snow removal, but in the past 3-4 years, our service has steadily declined. I just watched the plow make its pass through the neighborho [See Existing Comments for complete initial description.]
166032	SGNNEW	01/19/2019 03:21	Signs - Request for New Traffic Sign	TES_TRAFFIC_ENG	Problem: Civilian vehicles swerve around the ambulance as it is backing into Fire Station 205 on Cameron St. Frequently. Two way traffic in ostensibly one-way lanes is an accident waiting to happen. Neither the beep of the ambulance back-up alarm, nor flashing emergency lights, are an effective discouragement to other drivers. The same problem occurs with the engine and with the truck at station 205. Only their greater size, blocking more [See Existing Comments for complete initial description.]
166217	STRTPOTHLERPR	01/23/2019 08:20	Streets - Potholes	TES_STMAINNT	Where is it located? "In the road"Is it impacting traffic flow? "NO"Please describe the location "Intersection of N. Howard St and Seminary Road has several growing potholes. "Several potholes have developed in the intersection of N Howard Street and Seminary Road.

166219	STRTPOTHLERPR	01/23/2019 08:59	Streets - Potholes	TES_STMAINNT	Where is it located? "In the road"Is it impacting traffic flow? "YES"Please describe the location "N Beauregard heading toward Seminary Road"Left lane on N Beauregard Street, just before the street intersects with Sanger Ave. The pothole is in front of Apartment building 5500-02 and 5500-A (address signs on the side of the apartment building). The pothole is large and deep and needs immediate attention because it can cause serious damage to vehicles.
166541	STRSDWSNWRM	01/28/2019 06:37	Snow & Ice Removal Sidewalk	TES_ROW	I frequently walk the block around EHS and The Seminary and due to what seems like drainage issues, the stretch on N. Howard and then again on N. Quaker has long stretches of solid ice. If the ground is even a bit wet, you have to walk in the street to avoid either deep mud and/or ice. Is this a Seminary issue or a City issue? Either way, the sidewalks aren't passable, and given the cold weather coming up, it's going to get worse. Thanks for your help!
166754	STRTPOTHLERPR	01/30/2019 01:47	Streets - Potholes	TES_STMAINNT	Where is it located? "In the road"Is it impacting traffic flow? "YES"Please describe the location "between Kenmore Ave n N Pickett Sts"1-30-2019, on Seminary Rd (RT 420) between Kenmore Ave and N Pickett St, eliminate ALL multiple potholes.ANDIn addition put on a schedule to resurface Seminary Rd as a minimum between RT 395 and at/near/past 4320 Seminary Rd (hospital).MILL AND PAVE this road because road: 1.Has begun to [See Existing Comments for complete initial description.]
166766	SGNFADDMDGD	01/30/2019 03:40	Signs - Faded/Damaged/ Twisted Traffic Sign	TES_TRAFFICOPS	UNTWISTED SIGN MOUNTED TO WIRES
166726	SIGPROBDETTECT	01/30/2019 08:02	Traffic Signals - Vehicle Detection Problem	TES_TRAFFICOPS	Please let us know which signalized intersection you are commenting on. "Seminary Rd and N Howard St"What problem have you observed? "Long wait for signal change"The lights at this intersection need to be timed better. Around 5:15 every morning, usually have to wait 3-4 minutes to turn left from N Howard St. onto Seminary Rd. The walk signal crossing N. Howard St. is always on even when there are no pedestrians.
167035	SGNNEW	02/4/2019 04:33	Signs - Request for New Traffic Sign	TES_TRAFFICENG	Please put 'Do not block intersection' signage or something similar at the corners of Duke Street and North Quaker Lane. It has taken me as much as 20 minutes to get from Seminary Road to be able to turn left onto Duke Street. *More importantly* it is a major detriment to police and fire departments trying to respond to emergencies. Thank you.
167059	STRTRPR	02/5/2019 07:43	Street Repair	TES_STMAINNT	Where is it located? "In the road"Is it impacting traffic flow? "YES"Please describe the location "Seminary road east bound from howard street"on Seminary from Howard to at least St. Stephens, it's just pot hole after pothole East bound lanes.
167061	STRLIGHTOUT	02/5/2019 08:26	Street Light Outage Report	TES_TRAFFICOPS	What is the problem with this street light? "Off"Is there any physical damage to the light? (e.g. cover is broken, bulb is broken out, wires hanging) "No"Has the pole been knocked down? "No"Streetlight Owner: "UNKNOWN"There are several street light out at Southern Towers' Apartments main entrance. Several complaints have been made to management and to no avail anything has been done. This is a very busy complex that filters out [See Existing Comments for complete initial description.]
167275	STRTPOTHLERPR	02/7/2019 02:24	Streets - Potholes	TES_STMAINNT	Where is it located? "In the road"Is it impacting traffic flow? "NO"Please describe the location "641 N. Pegram St. "There are at least 3 potholes on N. Pegram Street between Taney Ave and Sutton Place. All 3 are becoming deeper by the day. There are also at least 60 places between Holmes Run Parkway ant Taney where some chunks of pavement have been displaced, which are holding water after rain. North Pegram is the only through [See Existing Comments for complete initial description.]
167292	STRTRPR	02/7/2019 04:22	Street Repair	TES_STMAINNT	Where is it located? "In the road"Is it impacting traffic flow? "YES"Please describe the location "Intersection of Seminary and Howard, especially the closest to the hospital. "
167749	STRTPOTHLERPR	02/13/2019 10:31	Streets - Potholes	TES_STMAINNT	Where is it located? "In the road"Is it impacting traffic flow? "YES"Please describe the location "right lane of eastbound seminary, just past the light at N. Howard- pothole is very close to first speed limit sign on Seminary after passing Howard "huge pothole as described above
167754	STRTPOTHLERPR	02/13/2019 10:59	Streets - Potholes	TES_STMAINNT	Where is it located? "In the road"Is it impacting traffic flow? "YES"Please describe the location "far right lane on Seminary Road going towards Quaker Lane"It is located before the first digital speed limit sign on Seminary Road and after the hospital. This pothole along with another one on West Taylor Run seems to be growing daily. It won't be long before it will spread along the entire. I understand generally people won't go af [See Existing Comments for complete initial description.]
167959	STRTPOTHLERPR	02/15/2019 03:21	Streets - Potholes	TES_STMAINNT	Where is it located? "In the road"Is it impacting traffic flow? "NO"Please describe the location "On Beauregard between Seminary and Fillmore, in the right lane of eastbound side of road"
168015	SGNMISSING	02/16/2019 04:59	Signs - Missing Traffic Sign	TES_TRAFFICOPS	I have lived in Alexandria all my life and over the past few years, I have noticed that signage is disappearing. Specifically i am speaking of snow emergency signage along a city designated snow emergency route. Is there a reason signage is not being replaced as it disappears along N. Jordan street from duke street to north Howard and north Howard to Seminary road. When we have snow storms I have always been told that there is NO PARK [See Existing Comments for complete initial description.]
167980	ROWLWHNGWIRE	02/16/2019 09:16	Low Hanging Wire Over Street	TES_ROW	There are low hanging wires that interrupt the visibility of traffic signals at this location. The span for this bundle of wires is very long, which allows the wires to hang right in the zone of traffic signals (approximately three) that direct traffic coming East on Seminary Road. This is a MAJOR intersection where MANY accidents have happened in the recent past an ALL aspects of traffic safety should be evaluated to reduce accidents. [See Existing Comments for complete initial description.]

167982	TES_CMPL TSTRTS	02/16/2019 09:36	Complete Streets Requests	TES_TRAN SPLN	What type of sign is it? "Other"Is it a construction site? "NO"Is the sign on city or private property? "Unknown"Is it residential or commercial? "Residential"What is the reason for removal? "Improved Safety at Intersection"Please describe the sign "Bike Route Sign"There is a Bike Route Sign at this location that blocks visibility of other more important signage and traffic signals at intersection of Quaker Lane and Janneys [See Existing Comments for complete initial description.]
167983	TRAFENG_ COMPLETE_ ST	02/16/2019 09:47	Traffic Engineering - Complete Streets Issue	TES_TRAF FIC_ENG	What type of sign is it? "Other"Is it a construction site? "NO"Is the sign on city or private property? "Unknown"Is it residential or commercial? "Residential"What is the reason for removal? "Intersection Safety"Please describe the sign "NO TURN ON RED"There are at least two post mounted NO TURN ON RED, when pedestrians are present signs at the intersection of Janneys Lane, Seminary Lane and Quaker Lane (both sort of leaning [See Existing Comments for complete initial description.]
167985	TES_CMPL TSTRTS	02/16/2019 10:04	Complete Streets Requests	TES_TRAN SPLN	Please Choose a Complete Streets Topic "Intersection"The intersection of Janneys, Seminary and Quaker Lanes is a major intersection that should improved for traffic safety, pedestrian safety and improved aesthetics. Plans may be in the works for improvement, but if not it is well overdue! All other intersections along Quaker Lane have been improved (for example, King and Quaker, Quaker and Duke) and this location should be improved [See Existing Comments for complete initial description.]
168098	STRTPOTH LERPR	02/18/2019 10:17	Streets - Potholes	TES_STMAI NT	Where is it located? "In the road"Is it impacting traffic flow? "NO"Please describe the location "4100 Seminary road"
168125	STRTPOTH LERPR	02/19/2019 10:16	Streets - Potholes	TES_STMAI NT	Dear Mayor Wilson—Thank you for your leadership in Alexandria.As a resident of Alexandria, I wanted to flag a potential safety issue near our home:Howard Street (near the Inova Alexandria Hospital) are filled with potholes that practically cause your car to veer off the roadside. I've been told the City prioritizes certain roads and plans to eventually address this, but it is just simply taking too long, plain and simple. [See Existing Comments for complete initial description.]
168445	STRTPOTH LERPR	02/23/2019 11:26	Streets - Potholes	TES_STMAI NT	Where is it located? "In the road"Is it impacting traffic flow? "YES"Please describe the location "Far right lane on Seminary heading west after Howard, right after the hospital "This is a giant pothole, a few feet long. People are swerving to avoid.
168417	STRTPOTH LERPR	02/23/2019 12:09	Streets - Potholes	TES_STMAI NT	Where is it located? "In the road"Is it impacting traffic flow? "NO"Please describe the location "large, deep pot hole. On Seminary road East of the intersection of North Howard in the curb lane. It is located near the hub cap sitting on the side of the road."
168464	STRTPOTH LERPR	02/24/2019 03:17	Streets - Potholes	TES_STMAI NT	Where is it located? "In the road"Is it impacting traffic flow? "YES"Please describe the location "Seminary Road heading towards Old Town just passed Howard intersection by Inova hospital"This pot hole is big enough to damage vehicle tires and wheels and it is impacting traffic flow as cars swerve suddenly to avoid it
168564	STRTPOTH LERPR	02/25/2019 02:13	Streets - Potholes	TES_STMAI NT	Where is it located? "In the road"Is it impacting traffic flow? "NO"Please describe the location "From Seminary Rd., the curve turning onto N. Beauregard St., there are multiple potholes to be filled. "From Seminary Rd., the curve turning onto N. Beauregard St., there are multiple potholes to be filled.
168582	TRAFENG_ COMPLETE_ ST	02/25/2019 03:43	Traffic Engineering - Complete Streets Issue	TES_TRAF FIC_ENG	What type of marking is this? "Crosswalk"Please describe the marking "pedestrian warnings"The Seminary Rd/Mark Center Dr intersection is very dangerous and something needs to change. Vehicles regularly go through red lights, including long after light has turned red for them (one time I counted six seconds after the light has turned). I have never seen a police presence, and vehicles seem to have no consequences for running red ligh [See Existing Comments for complete initial description.]
168692	STRTPOTH LERPR	02/26/2019 06:21	Streets - Potholes	TES_STMAI NT	Where is it located? "In the road"Is it impacting traffic flow? "YES"Please describe the location "Directly in front of 4609 Seminary Road, Firehouse 206"Pot hole in right travel lane traveling WB
169352	STRTPOTH LERPR	03/6/2019 03:19	Streets - Potholes	TES_STMAI NT	Where is it located? "In the road"Is it impacting traffic flow? "NO"Please describe the location "East bound Seminary Road from the City boundary line to Quaker Lane"Travel eastbound along Seminary Road from the City boundary line near Baileys Crossroads to the intersection of Seminary and Quaker Lane, and you will encounter many deep potholes. I had to dodge several rather deep potholes this afternoon.
169518	STRTPOTH LERPR	03/8/2019 02:18	Streets - Potholes	TES_STMAI NT	Where is it located? "In the road"Is it impacting traffic flow? "YES"Please describe the location "seminary road- east and westward"all along seminary road, terrible potholes
169532	STRTPOTH LERPR	03/8/2019 02:52	Streets - Potholes	TES_STMAI NT	Where is it located? "In the road"Is it impacting traffic flow? "YES"Please describe the location "Seminary Road to Quaker Road"The road from the Hospital to Quaker Lane needs repair. Every other foot there is broken road.
169571	STRTPOTH LERPR	03/9/2019 11:30	Streets - Potholes	TES_STMAI NT	Where is it located? "Other"Is it impacting traffic flow? "NO"Please describe the location "Pedestrian bridge over I395 adjacent to Seminary Rd"Pedestrian bridge needs to be cleaned of leaves and trash. Thank you.
169721	STRTPOTH LERPR	03/11/2019 01:04	Streets - Potholes	TES_STMAI NT	Where is it located? "In the road"Is it impacting traffic flow? "YES"Please describe the location "the whole Seminary Road"The whole seminary road is full of potholes. This road has been bad for weeks now. It needs to be fixed right away! I find it dangerous to people to drive on.
169770	STRTPOTH LERPR	03/11/2019 05:23	Streets - Potholes	TES_STMAI NT	Where is it located? "In the road"Is it impacting traffic flow? "YES"Please describe the location "Many on Seminary Road between Howard and Quaker "These potholes are damaging to cars but CAN BE FATAL to motorcyclists. There are MANY (up to 50) on Seminary road between Howard and Quaker lane, usually in the right lane, both eastbound and westbound. These are damaging citizens' cars and present a safety hazard and can easily cau [See Existing Comments for complete initial description.]

169790	TES_CMPL TSTRTS	03/11/2019 09:39	Complete Streets Requests	TES_TRAN SPLN	Where is it located? "300 Crown View Dr."What is the sidewalk material? "Concrete"Please describe the damage "Sidewalk broken/nonexistent, needs paving."There is an informal walking path connecting Dartmouth Rd., despite the deadend prohibiting eastbound vehicle traffic through to Skyhill Rd/West Taylor Run. The Western entrance is at Dartmouth and Crown View Dr. The sidewalk on the Eastern side stops abruptly by the Seminary Wal [See Existing Comments for complete initial description.]
169989	STRTPOTH LERPR	03/13/2019 01:00	Streets - Potholes	TES_STMAI NT	Where is it located? "In the road"Is it impacting traffic flow? "YES"Please describe the location "left lanes traveling from King st to Seminary on N. Beauregard"From King st to Seminary - N Beauregard is torn up badly. Particularly from Braddock to seminary (as you head towards Southern Towers) I can't get the app to give an address on Beauregard. LOTS of potholes - one after another.
170058	STRTPOTH LERPR	03/13/2019 07:06	Streets - Potholes	TES_STMAI NT	Where is it located? "In the road"Is it impacting traffic flow? "YES"Please describe the location "In Alexandria, on the entire side of Seminary Road where the road splits off and Seminary turns left. That entire road has such deep potholes, like 15 of them on both sides. There is a McDonalds on the right side as well."Please fill them. There is a Bank of America and Burke and Herbert on the side.
170077	SIGPROBD ETECT	03/14/2019 08:06	Traffic Signals - Vehicle Detection Problem	TES_TRAFI C_OPS	Please let us know which signalized intersection you are commenting on. "Quaker and Seminary"What problem have you observed? "Significant backups"Traffic was SIGNIFICANTLY backed up on Quaker today beginning as early as 7:15 and persisting until past 8. This had NEVER backed up like this. It appeared the left turn light on to Seminary was much shorter than usual. I was unable to turn left out of my drive at 212 N Quaker.
170347	TRAFENG_ COMPLETE_ ST	03/16/2019 01:34	Traffic Engineering - Complete Streets Issue	TES_TRAFI C_ENG	FIX THE INTERSECTION FROM EXITING THE RAMP OF 395 N TO SEMINARY RD EAST, THESE VEHICLES AND THE TRAFFIC PATTERN FOR BUSES TO GAIN THE RIGHT OF WAY AS THEY HAVE BEFORE TO THE BUS STOP AT SEMINARY AND LIBRARY LANE IS DANGEROUS. THE BUSES CAN'T PROCEED TO THE BUS STOP DUE TO THE VEHICLE SPEEDING ON THE RAMP ONTO SEMINARY RD. THE VEHICLES NEVER, NEVER, ADHERE TO THE YIELD SIGN AT KENMORE AV AND SEMINARY ROAD EASTBOUND. THE BUSES NEED TO GE [See Existing Comments for complete initial description.]
170393	TES_CMPL TSTRTS	03/17/2019 01:34	Complete Streets Requests	TES_TRAN SPLN	I oppose the narrowing of Seminary Road as part of the Alexandria Complete Streets Program. We need to keep the current four lanes on Seminary open to vehicular traffic. Please do not do it to us again!
170396	TES_CMPL TSTRTS	03/17/2019 01:40	Complete Streets Requests	TES_TRAN SPLN	I oppose the narrowing of Seminary Road as part of the Alexandria Complete Streets Program. We need to keep the current four lanes on Seminary open to vehicular traffic.
170397	TES_CMPL TSTRTS	03/17/2019 01:44	Complete Streets Requests	TES_TRAN SPLN	We strongly oppose the narrowing of Seminary Rd between Quaker Lane and Howard Rd!!! Have bicycles taken over this city? King St is bad enough. Please rethink this terrible idea!
170398	TES_CMPL TSTRTS	03/17/2019 01:54	Complete Streets Requests	TES_TRAN SPLN	I oppose the narrowing of Seminary Road as part of the Alexandria Complete Streets Program. We need to keep the current four lanes on Seminary open to vehicular traffic.Haven't you done enough to paralyze traffic in this city to build bicycle lanes that used. Traffic calming devices and speed enforcement are what we need to protect our community.
170399	TES_CMPL TSTRTS	03/17/2019 01:55	Complete Streets Requests	TES_TRAN SPLN	To whom this may concern:I strongly oppose the narrowing of Seminary Road as part of the Alexandria Complete Streets Program. We need to keep the current four lanes on Seminary open to vehicular traffic.Our roads are inadequate as they are. Commuting challenges in Alexandria will affect quality of life, property values and the city's appeal to investors, given the already clogged roadways, which you're about to make worse.In t [See Existing Comments for complete initial description.]
170401	TES_CMPL TSTRTS	03/17/2019 01:58	Complete Streets Requests	TES_TRAN SPLN	I oppose the narrowing of Seminary Road as a part of the complete streets program.We need more than the existing four lanes to handle the vehicular traffic.
170405	TES_CMPL TSTRTS	03/17/2019 02:06	Complete Streets Requests	TES_TRAN SPLN	I oppose the narrowing of Seminary Road as part of the Alexandria Complete Streets Program. We need to keep the current four lanes on Seminary open to vehicular traffic. Narrowing this stretch of road to hospital traffic, schools and for local commuters makes no sense. I travel this road almost daily and cannot imagine how congested and frustrating my commute will be on the road with fewer lanes. Furthermore, I go months without seeing [See Existing Comments for complete initial description.]
170409	TES_CMPL TSTRTS	03/17/2019 02:23	Complete Streets Requests	TES_TRAN SPLN	I understand that the City of Alexandria is considering converting Seminary Rd from a 4 lane road to only 2 lanes. I am strongly opposed — traffic needs to go somewhere and the impact of these decisions to reduce the lanes and speeds on the major arteries is to spread the traffic across all of the smaller neighborhood streets. This reduces the quality of life for residents and is completely unacceptable. Please reconsider— we've already had to live through enough of these kids of changes.
170412	TES_CMPL TSTRTS	03/17/2019 02:37	Complete Streets Requests	TES_TRAN SPLN	I oppose the narrowing of Seminary Road as part of the Alexandria Complete Streets Program. We need to keep the current four lanes on Seminary open to vehicular traffic.
170413	TES_CMPL TSTRTS	03/17/2019 02:40	Complete Streets Requests	TES_TRAN SPLN	REF: potential reduction of lanes on Seminary Rd.I understand that the city is continuing to seriously consider narrowing Seminary Road to one lane each way between Howard and Quaker, with the addition of a designated bike lane. I am strongly opposed to this idea as unnecessary and one that will make traffic flow even worse than it already is, particularly at the intersection of Quaker and Seminary in the evenings. I am a resident of [See Existing Comments for complete initial description.]



170415	TES_CMPL TSTRTS	03/17/2019 02:44	Complete Streets Requests	TES_TRAN SPLN	This city has made some absolutely knucklehead moves in the traffic arena in the past Some of these decisions involved converting four lane main traffic arteries to two lanes to make room for bike lanes. Do not make the same mistake again on Seminary Road. King Street was a mistake and doing the same for Seminary would not be smart. Do not make the same mistake again. Seminary is a major traffic artery. If you think King Street gets back [See Existing Comments for complete initial description.]
170416	TES_CMPL TSTRTS	03/17/2019 02:45	Complete Streets Requests	TES_TRAN SPLN	Hi, I oppose making Seminary Road a single lane road. I am appalled at the fact that a few very vocal voices have made such a significant impact on our roads. Not only have we lowered the street speed limit but we have also added bike lanes that I hardly ever see anyone on. I use the streets and sidewalk more often then these bikers yet here we are paving roads for the few. We have paid so much taxes in this city and our focus is on m [See Existing Comments for complete initial description.]
170418	TES_CMPL TSTRTS	03/17/2019 02:51	Complete Streets Requests	TES_TRAN SPLN	I STRONGLY oppose the narrowing of Seminary Road as part of the Alexandria Complete Streets Program. We need to keep the current four lanes on Seminary open to vehicular traffic.
170419	TES_CMPL TSTRTS	03/17/2019 02:52	Complete Streets Requests	TES_TRAN SPLN	I oppose the narrowing of Seminary Road as part of the Alexandria Complete Streets Program. We need to keep the current four lanes on Seminary open to vehicular traffic.
170421	TES_CMPL TSTRTS	03/17/2019 03:14	Complete Streets Requests	TES_TRAN SPLN	Problem address entered by customer: 120 E. Taylor Run Pkwyl oppose the narrowing of Seminary Road as part of the Alexandria Complete Streets Program. We need to keep the current four lanes on Seminary open to vehicular traffic. Seminary is a critical vehicular thoroughfare for those who live in Seminary Ridge, Seminary Hill, College Park, Clover, and East and West Taylor Run. Add to them the thousands of residents and non-residents [See Existing Comments for complete initial description.]
170420	TES_CMPL TSTRTS	03/17/2019 03:14	Complete Streets Requests	TES_TRAN SPLN	Reference proposal for narrowing Seminary Road to two lanes, one each way, after presentation by Complete Streets Coordination on 14 March: the portion of Seminary Road proposed for this change has the lowest -- or 2nd - 3rd lowest - accident rate on the VA motor vehicles data base the past four years for Alexandria Streets ... and none are bicycle, and the few pedestrian ones are at the crossing from a bus stop across the street from NO [See Existing Comments for complete initial description.]
170423	TES_CMPL TSTRTS	03/17/2019 03:25	Complete Streets Requests	TES_TRAN SPLN	As a resident of Alexandria, who resides just off of Quaker Lane, I ask that you DO NOT move forward with your plan to reduce Seminary Road to two travel lanes. The changes that our city has made thus far, eg: reducing speeds on Quaker, reducing lanes on King Street have been disastrous to those of us that LIVE (and pay taxes) in the area. Having lived in my current home for 11 years, while it has always been a busy area, much of the heav [See Existing Comments for complete initial description.]
170424	TES_CMPL TSTRTS	03/17/2019 03:32	Complete Streets Requests	TES_TRAN SPLN	Problem address entered by customer: 402 Cambridge RdAs a resident of nearby Cambridge Road and a frequent driver along this route, I oppose the proposal to narrow Seminary Road as part of the Alexandria Complete Streets Program. Converting Seminary from a four lane to a two lane street will result in even slower and more congested traffic on this well traveled road, which is a main artery for Alexandria residents. Please do not make our traffic problems worse.
170425	TES_CMPL TSTRTS	03/17/2019 03:48	Complete Streets Requests	TES_TRAN SPLN	I oppose the narrowing of Seminary Road as part of the Alexandria Complete Streets Program. We need to keep the current four lanes on Seminary open to vehicular traffic. I'm tired of all the ways the City is making it harder and harder for citizens who live between Duke and Seminary/Janneys/King to enter and exit our neighborhoods, and I'm wondering why you dislike the residents of these neighborhoods so much that you keep punishing us by [See Existing Comments for complete initial description.]
170426	TES_CMPL TSTRTS	03/17/2019 03:50	Complete Streets Requests	TES_TRAN SPLN	I oppose the narrowing of Seminary Road as part of the Alexandria Complete Streets Program. We need to keep the current four lanes on Seminary open to vehicular traffic.
170432	TES_CMPL TSTRTS	03/17/2019 04:52	Complete Streets Requests	TES_TRAN SPLN	Dear City Council and Leadership of Alexandria City: I am writing opposed to the proposal to reduce the number of lanes on Seminary Road. I travel this road several times a week and many times would be stuck behind cars waiting to turn without the second lane in my direction. I am at a loss for why the City would want to decrease the capacity of our roadways.
170433	TES_CMPL TSTRTS	03/17/2019 05:01	Complete Streets Requests	TES_TRAN SPLN	I categorically oppose the narrowing of Seminary Road as part of the Alexandria Complete Streets Program. We need to keep the current four lanes on Seminary open to vehicular traffic. Narrowing Seminary Road will only exacerbate traffic, which is antithetical to road safety. Thank you.
170436	TES_CMPL TSTRTS	03/17/2019 05:14	Complete Streets Requests	TES_TRAN SPLN	I just heard about the reduction in lanes on seminary road. I would like to know who voted for this! And what purpose this serves. The 1% of bikers or the 99% of drivers?
170437	TES_CMPL TSTRTS	03/17/2019 05:29	Complete Streets Requests	TES_TRAN SPLN	I don't like that Seminary Rd is going to be strangled by a Hitlerian Dictatorship, from four lanes to two lanes, for the sake of the few bicyclists and pedestrians that walk and bike. I drive slowly on Seminary Rd. Don't penalize many for the sake of a few.
170438	TES_CMPL TSTRTS	03/17/2019 05:46	Complete Streets Requests	TES_TRAN SPLN	I oppose the narrowing of Seminary Road as part of the Alexandria Complete Streets Program. We need to keep the current four lanes on Seminary open to vehicular traffic.
170439	TES_CMPL TSTRTS	03/17/2019 05:53	Complete Streets Requests	TES_TRAN SPLN	I oppose the narrowing of Seminary Road as part of the Alexandria Complete Streets Program. We need to keep the current four lanes on Seminary open to vehicular traffic.Barbara WesternHomeowner, Alexandria VA
170440	TES_CMPL TSTRTS	03/17/2019 06:10	Complete Streets Requests	TES_TRAN SPLN	I oppose the narrowing of Seminary Road as part of the Alexandria Complete Streets Program. We need to keep the current four lanes on Seminary open to vehicular traffic.

170443	TES_CMPL TSTRTS	03/17/2019 06:19	Complete Streets Requests	TES_TRAN SPLN	I oppose the narrowing of Seminary Road as part of the Alexandria Complete Streets Program. I support keeping Seminary Road four lanes as it is currently.
170442	TES_CMPL TSTRTS	03/17/2019 06:19	Complete Streets Requests	TES_TRAN SPLN	I oppose the narrowing of Seminary Road as part of the Alexandria Complete Streets Program. We need to keep the current four lanes on Seminary open to vehicular traffic. Vision Zero is a costly mistake.
170447	TES_CMPL TSTRTS	03/17/2019 06:45	Complete Streets Requests	TES_TRAN SPLN	It is my understanding that my City has a plan to reduce the driving lanes on Seminary Road, in favor of bicycle lanes. I oppose this plan as a major factor in causing gridlock and would cause the citizenry to be very unhappy living here. Please do not reduce the driving lanes anywhere in Alexandria, and I hope you will reverse back the ones already figured as such. Thank you very much! Sincerely, Martha von Guggenberg [See Existing Comments for complete initial description.]
170449	TES_CMPL TSTRTS	03/17/2019 06:50	Complete Streets Requests	TES_TRAN SPLN	Keep Seminary Road open to four lanes for thorough traffic so it can move freely. This is especially needed for frequent emergency traffic. Cutting the roadway down to two lanes creates unneeded congestion.
170450	TES_CMPL TSTRTS	03/17/2019 06:54	Complete Streets Requests	TES_TRAN SPLN	I have lived and voted and driven my car in Alexandria for more than 14 years. I am strongly OPPOSED to the proposal to take two car traffic lanes away from Seminsry Road and replace them with bike lanes. From what I have observed, as a frequent user of Seminary Road, the volume of bicycle traffic does not warrant making this drastic and ill-advised change. Taking traffic lanes away from drivers will build resentment and will not cause ca [See Existing Comments for complete initial description.]
170456	TES_CMPL TSTRTS	03/17/2019 07:46	Complete Streets Requests	TES_TRAN SPLN	I oppose the narrowing of Seminary Road as part of the Alexandria Complete Streets Program. We need to keep the current four lanes on Seminary open to vehicular traffic. I have lived in the West End for 25 years and have seen the growth of use of Seminary Road as a main thoroughfare through this part of town. This increase has been especially noticeable since the opening of the Mark Center buildings which we all know were approved with [See Existing Comments for complete initial description.]
170457	TES_CMPL TSTRTS	03/17/2019 07:49	Complete Streets Requests	TES_TRAN SPLN	I oppose the narrowing of Seminary Road as part of the Alexandria Complete Streets Program. We need to keep the current four lanes on Seminary open to vehicular traffic.
170458	TES_CMPL TSTRTS	03/17/2019 08:11	Complete Streets Requests	TES_TRAN SPLN	Please don't narrow Seminary Road! The traffic will get clogged up where all the school bus is turning at Saint Stephen's road. It wil also be bad at Hammond Junior high. Thank you Daniel Moser
170459	TES_CMPL TSTRTS	03/17/2019 08:28	Complete Streets Requests	TES_TRAN SPLN	My husband, Alberto, and I have lived near the intersection of Janneys Lane and West Taylor Run Parkway since 2003. We drive on Seminary Road often. We oppose narrowing the stretch of Seminary Road from Quaker Lane to Howard Street to two vehicular lanes. We ask that the city council keep the current four lanes open to vehicular traffic. Upper King Street has already been reduced to two vehicular lanes and the speed limit has been red [See Existing Comments for complete initial description.]
170464	TES_CMPL TSTRTS	03/17/2019 09:24	Complete Streets Requests	TES_TRAN SPLN	Problem address entered by customer: 2611 Jefferson Drive Seminary Road narrowing???????? Are you so out of touch with the working class that you would even consider this? Do any of you use this road during rush hour? Other people in government are pushing the widening of the Beltway, and my city want to narrow a major artery- People, I believe that you work for us- and I believe that you are not on this one-
170466	TES_CMPL TSTRTS	03/17/2019 10:04	Complete Streets Requests	TES_TRAN SPLN	I oppose the narrowing of Seminary Road as part of the Alexandria Complete Streets Program. We need to keep the current four lanes on Seminary open to vehicular traffic. Narrowing the road will create gridlock and will force more cars and traffic onto side streets that are not designed to handle additional traffic, and which children use to get to and from Francis Hammond Middle School, Polk Elementary and Patrick Henry Elementary School [See Existing Comments for complete initial description.]
170369	TES_CMPL TSTRTS	03/17/2019 10:42	Complete Streets Requests	TES_TRAN SPLN	Regarding the Seminary Road Complete Streets Project I opposed that Seminary rd will be reduced to two lanes. This will increase the traffic. I use seminary rd on a daily basis to commute for work.
170370	TES_CMPL TSTRTS	03/17/2019 10:43	Complete Streets Requests	TES_TRAN SPLN	I oppose reducing the number of lanes on Seminary Road. Also, I think road conditions (potholes, etc) and congested traffic are the worst they have ever been.
170373	TES_CMPL TSTRTS	03/17/2019 11:14	Complete Streets Requests	TES_TRAN SPLN	I am very concerned about the proposed plans for Seminary Road. When I initially heard about the plans, I attended a meeting at Emmanuel and no city traffic people agreed to attend. We were told that our "anxiety" was unwarranted. To find out now that the city is moving forward with this horrible plan that seems designed to appease the wealthier part of the city is infuriating. Seminary road is a critical artery where the reduced speed li [See Existing Comments for complete initial description.]
170375	TES_CMPL TSTRTS	03/17/2019 11:31	Complete Streets Requests	TES_TRAN SPLN	Dear members of the city council, I'm writing to express my EXTREME concern at your complete streets proposal to take seminary road down to two lanes between Howard and Quaker lane. Seminary road is a main artery that is already severely congested most times of the day. It was bad enough that you made it 25 mph (which no one enforces, by the way), but now you want to create massive congestion by taking this road down to two lanes. You [See Existing Comments for complete initial description.]
170376	TES_CMPL TSTRTS	03/17/2019 11:38	Complete Streets Requests	TES_TRAN SPLN	I just saw an announcement concerning Seminary Road (in VA), a road I have been living on for 1.5 years that desperately needs repair attention. I'm shocked to think this idea of reducing lanes is receiving serious consideration because a) I've never seen a bicyclist use the road, ever, b) the road is in such poor condition near the Skyline area that automobiles have trouble using the existing lanes, c) the traffic flow is too much for th [See Existing Comments for complete initial description.]

170377	TES_CMPL TSTRTS	03/17/2019 11:40	Complete Streets Requests	TES_TRAN SPLN	I am writing to voice my disapproval of the proposed changes to Seminary between Howard and Quaker Lane. I urge the powers that be to give strong consideration to the fact that this area has seen excess traffic over the past few years with Mark Centre and will likely have changing and possibly increased traffic patterns with the "new and improved" HOV lanes (topic for another discussion!). I understand that a small minority of people are [See Existing Comments for complete initial description.]
170386	TES_CMPL TSTRTS	03/17/2019 12:34	Complete Streets Requests	TES_TRAN SPLN	Dear Members of the Council,I'm writing regarding the planned changes to Seminary Road between Howard and Quaker. As someone who drives on that road several times a week, and bikes on it several times a month, I would love to see Seminary road updated such that it could better accommodate the motor vehicle and bicycle traffic. However, the proposed solution -- doing away with two lanes to convert them to bike lanes, thereby eliminat [See Existing Comments for complete initial description.]
170387	TES_CMPL TSTRTS	03/17/2019 12:35	Complete Streets Requests	TES_TRAN SPLN	Our neighborhood chat just said the Council will approve Seminary Road being reduced to two vehicle lanes and to bike lanes. This is a ridiculous idea, and I can't believe it's gotten this far. The bike traffic isn't close to justifying it and the traffic impact will be terrible. Please prevent this from happening. Sincerely, Bob Boyd, 535 Ft. Williams Parkway
170558	TES_CMPL TSTRTS	03/18/2019 01:20	Complete Streets Requests	TES_TRAN SPLN	Problem address entered by customer: 4624 34th St SWe oppose the narrowing of Seminary Road as part of the Alexandria Complete Streets Program. We need to keep the current four lanes on Seminary open to vehicular traffic. We live in Fairlington (one block off of King Street) and use Van Dorn and King Street regularly (several times a week - every week). With the insane changes made on both streets by reducing the speed limit to 25 MPH, [See Existing Comments for complete initial description.]
170575	STRTPOTH LERPR	03/18/2019 03:05	Streets - Potholes	TES_STMAI NT	resident reported several potholes along seminary and n jordan street
170580	TES_CMPL TSTRTS	03/18/2019 03:23	Complete Streets Requests	TES_TRAN SPLN	I strongly oppose narrowing Seminary Rd. The residents of Seminary Valley already have a hard time getting out of the neighborhood due to the poor traffic planning when the BRAC building was put in place! Fix the issues on that side if Seminary and then talk about narrowing Seminary
170586	TES_CMPL TSTRTS	03/18/2019 03:45	Complete Streets Requests	TES_TRAN SPLN	Dear Mayor, Vice Mayor, and City Council Members,I am a twenty year resident of Alexandria having lived on Taney Avenue, Off North Beauregard St, and now on Gadsby Avenue. I use Seminary Road everyday. I oppose the narrowing of Seminary Road as part of the Alexandria Complete Streets Program. We need to keep the current four lanes on Seminary open to vehicular traffic. There are residents who say the Council is moving ahead with [See Existing Comments for complete initial description.]
170593	TES_CMPL TSTRTS	03/18/2019 04:13	Complete Streets Requests	TES_TRAN SPLN	Good afternoon, I am writing to you to express my opposition to the narrowing of Seminary Road as part of the Alexandria Complete Streets Program. We need to keep the current four lanes on Seminary open to vehicular traffic. Narrowing this stretch of road to hospital traffic, schools and for local commuters makes no sense. I also am concerned about traffic needing to reach the hospital. Wouldn't this narrowing of lanes create a communit [See Existing Comments for complete initial description.]
170595	TES_CMPL TSTRTS	03/18/2019 04:31	Complete Streets Requests	TES_TRAN SPLN	Problem address entered by customer: 622 Fort Williams PkwyThis note provides a simple request: Please support the City's open engagement and decision-making process for the Seminary Road project. I am sure that you each recognize that a few residents are using fear to generate a wave a protest against re-configuring Seminary Road. Traffic congestion is real, but re-engineering streets on the principles of Vision Zero will correc [See Existing Comments for complete initial description.]
170600	TES_CMPL TSTRTS	03/18/2019 05:35	Complete Streets Requests	TES_TRAN SPLN	Please for the love of all of us in the Alexandria area Do NOT make Seminary Road any smaller than it is. You guys already fucked us over on King Street so why in the hell would you think this this would be a good idea? There is enough Alexandria PD to monitor that area if it's "so unsafe." I would sell myself to the devil if King street would go back to two lanes and you keep Seminary the way it is. Honest to God you people have never [See Existing Comments for complete initial description.]
170602	TES_CMPL TSTRTS	03/18/2019 05:47	Complete Streets Requests	TES_TRAN SPLN	Problem address entered by customer: 6a E Mason AveHi All,This is just a quick note to support the Seminary Road vision zero project. I've been following this issue for a while (I used to spend a lot of time advocating for bike lanes) and have seen that 4-to-3 lane conversions of arterial roads like Seminary generally smooth traffic flow. When a driver slows down to turn they can merge into the middle lane (left turn) or the bike la [See Existing Comments for complete initial description.]
170471	TES_CMPL TSTRTS	03/18/2019 06:24	Complete Streets Requests	TES_TRAN SPLN	I oppose the narrowing of Seminary Road as part of the Alexandria Complete Streets Program. We need to keep the current four lanes on Seminary open to vehicular traffic.Anne LaFond400 Cloverway Dr
170476	TES_CMPL TSTRTS	03/18/2019 07:58	Complete Streets Requests	TES_TRAN SPLN	I oppose the narrowing of Seminary Road as part of the Alexandria Complete Streets Program. We need to keep the current four lanes on Seminary open to vehicular traffic.Alexandria is a beautiful city, let's not make irrational and mindless mistakes
170477	TES_CMPL TSTRTS	03/18/2019 08:13	Complete Streets Requests	TES_TRAN SPLN	Council would be ill advised to change Seminary Road from a 4 lane to a two lane street. The reasons to retain it are many, but most notably as it restricts traffic flow to and from our hospital as well as will hurt residents and those who work in Alexandria from getting to and from destinations in the city.Any rational that suggests reducing lanes to two as has been done to King solely to reduce our cut through traffic problem is s [See Existing Comments for complete initial description.]

170482	TES_CMPL TSTRTS	03/18/2019 08:45	Complete Streets Requests	TES_TRAN SPLN	Reducing Seminary Road from four lanes down to two would be an absolute disaster and an affront to the vast majority of citizens in Alexandria. The bicycle lobby represents a small number of residents that care more about themselves than the well-being of Alexandria as a whole. The city's own Vision Zero data does not support the change and the city's horrible government cares little about what would actually be best for the city and it's [See Existing Comments for complete initial description.]
170483	TES_CMPL TSTRTS	03/18/2019 08:50	Complete Streets Requests	TES_TRAN SPLN	I oppose the narrowing of Seminary Road as part of the Alexandria Complete Streets Program. We need to keep the current four lanes on Seminary open to vehicular traffic. My family members are residents of the Seminary Hill area. We drive on these roads everyday. We sit in traffic as it is, narrowing these streets will constrict traffic even more so. I appreciate having safe spaces for all modes of transportation, however we will never tak [See Existing Comments for complete initial description.]
170624	TES_CMPL TSTRTS	03/18/2019 09:21	Complete Streets Requests	TES_TRAN SPLN	I regularly use Seminary Road to get to the Virginia Tech campus in Falls Church. When I drive at the speed limit, I'm regularly passed by cars that are clearly exceeding the posted speed and generally disregarding the rules. Things get more dodgy when entitled drivers think that Seminary is some kind of car slalom race. What is even more crazy is that there are several schools and a hospital along this road. How are pedestrians and s [See Existing Comments for complete initial description.]
170625	TES_CMPL TSTRTS	03/18/2019 09:22	Complete Streets Requests	TES_TRAN SPLN	I support the City's Vision Zero and Complete streets policies and hope that Seminary gets the same treatment as King St.I regularly use Seminary Road to get to the Virginia Tech campus in Falls Church. When I drive at the speed limit, I'm regularly passed by cars that are clearly exceeding the posted speed and generally disregarding the rules. Things get more dodgy when entitled drivers think that Seminary is some kind of car slal [See Existing Comments for complete initial description.]
170485	TES_CMPL TSTRTS	03/18/2019 09:26	Complete Streets Requests	TES_TRAN SPLN	I think safety should be paramount for our children and families. If a road diet on Seminary helps to achieve that then I am all for it. As a frequent walker, I cringe at the speed and driving of many of the cars on Seminary right now. Any help to mitigate risk would be welcome. I can say the same about the stretch of Braddock Road between Howard and Quaker, particularly as it has two schools along its route. Please consider that as well.
170626	TES_CMPL TSTRTS	03/18/2019 09:51	Complete Streets Requests	TES_TRAN SPLN	I have questions/concerns over the City's plan to address congestion on our roads. We allowed the federal government to build a massive building in the City without a strategic plan to handle traffic. The building was erected without access to public transportation or near the 495 corridor and now our secondary streets (seminary, Quaker, and Duke) are highly congested at rush hour. Now the City wants to reduce the flow of traffic even fur [See Existing Comments for complete initial description.]
170503	TES_CMPL TSTRTS	03/18/2019 10:00	Complete Streets Requests	TES_TRAN SPLN	I oppose the narrowing of Seminary Road as part of the Alexandria Complete Streets Program. We need to keep the current four lanes on Seminary open to vehicular traffic.I have also been concerned about the lowering of speed limits on major roads. Speeders will continue to speed regardless of the posted limits and it makes it unsafe when driving at the posted speeds (tailgating, aggressive passing). And while I endorse cycling, mos [See Existing Comments for complete initial description.]
170506	TES_CMPL TSTRTS	03/18/2019 10:24	Complete Streets Requests	TES_TRAN SPLN	I have heard that the city is considering narrowing Seminary Road. I want to voice my opposition to this move. I don't see any advantage to it. Adding Bike lanes is not necessary because they are seldom used (note that they are seldom used on King Street) and I don't believe it will aid in any reduction in traffic accidents. In fact, the city has already lowered the speed limit to 25 on Seminary which I believe should be sufficient to [See Existing Comments for complete initial description.]
170508	TES_CMPL TSTRTS	03/18/2019 10:33	Complete Streets Requests	TES_TRAN SPLN	In regards to reducing Seminary Road to two lanes (from Quaker Lane to North Howard St), the idea makes no sense. It will just make getting to 395 and the Mark Center in the mornings impossible. Since the council approved the Mark Center complex, it is your responsibility to reduce the impact on city residents. John Sesler Quaker Hill
170510	TES_CMPL TSTRTS	03/18/2019 10:43	Complete Streets Requests	TES_TRAN SPLN	Good morning,It has been brought to my attention that it is under discussion to reduce Seminary Rd to two traffic lanes that run from Howard Street to Quaker Lane. As a resident of the neighborhood directly adjacent to Seminary Road, I deal with highly congested traffic on Seminary Road on a daily basis. The impact of reduction of traffic lanes on Seminary would cause further delays and traffic congestion. I am highly opposed to the p [See Existing Comments for complete initial description.]
170629	TES_CMPL TSTRTS	03/18/2019 11:16	Complete Streets Requests	TES_TRAN SPLN	Greetings!! I STRONGLY oppose the narrowing of Seminary Road to vehicular traffic as part of the ridiculous Vision One Compkete Streets Program.I live in Seminary Ridge and am quite familiar with traffic patterns on Seminary Road. It is heavily used at all hours and needs to stay at four lanes for traffic, not be narrowed to please a very small minority of bicycle riders. We hardly need traffic to be choked up—we need these lanes to [See Existing Comments for complete initial description.]
170526	TES_CMPL TSTRTS	03/18/2019 11:18	Complete Streets Requests	TES_TRAN SPLN	Please do not turn Seminary Rd. into a one-lane street. The entire area is already over-trafficked. Constricting that major thoroughfare will not ease traffic in the area, but make it worse. As a resident of Seminary Ridge, I can assure you that no one who approves this will get my vote.
170527	TES_CMPL TSTRTS	03/18/2019 11:19	Complete Streets Requests	TES_TRAN SPLN	I oppose the narrowing of Seminary Road as part of the Alexandria Complete Streets Program. We need to keep the current four lanes on Seminary open to vehicular traffic.

170529	TES_CMPL TSTRTS	03/18/2019 11:29	Complete Streets Requests	TES_TRAN SPLN	I OPPOSE reducing the number of lanes on Seminary Road. The road is heavily used, especially during rush hour. Many use it as an alternative to get to the beltway via a cut through street (Quaker Lane, Jordan) to Duke during the evening rush. Restricting the number of lanes from Howard to Quaker will push even more traffic to Jordan - a residential street that often backs up for more than a mile when there is overflow from 395. There [See Existing Comments for complete initial description.]
170530	TES_CMPL TSTRTS	03/18/2019 11:35	Complete Streets Requests	TES_TRAN SPLN	I am completely opposed to narrowing Seminary Road to two lanes from four as part of the Alexandria Complete Streets Program. The potential for unintended consequences are great and should be fully considered and analyzed before funds are expended for this purpose. Seminary Road is a major thoroughfare, and should be maintained at four lanes of vehicle traffic for the foreseeable future. It is a critical route for police, emergency medica [See Existing Comments for complete initial description.]
170534	TES_CMPL TSTRTS	03/18/2019 11:49	Complete Streets Requests	TES_TRAN SPLN	I oppose the narrowing of Seminary Road as part of the Alexandria Complete Streets Program. We need to keep the current four lanes on Seminary open to vehicular traffic.
170538	TES_CMPL TSTRTS	03/18/2019 12:19	Complete Streets Requests	TES_TRAN SPLN	I oppose the narrowing of Seminary Road as part of the Alexandria Complete Streets Program. We need to keep the current four lanes on Seminary open to vehicular traffic.
170539	TES_CMPL TSTRTS	03/18/2019 12:20	Complete Streets Requests	TES_TRAN SPLN	Please DO NOT narrow Seminary Road! The addition of bicycle lanes to Alexandria and Arlington has done nothing but make congestion worse. A democracy means the majority should be the major consideration and the majority are suffering because of a minority of bicycle enthusiasts. We will never be Amsterdam, nor should we wish to be. Bicyclist are also the worst offenders of running red lights and not taking their turn but blasting ahead o [See Existing Comments for complete initial description.]
170544	TES_CMPL TSTRTS	03/18/2019 12:34	Complete Streets Requests	TES_TRAN SPLN	I oppose the narrowing of Seminary Road as part of the Alexandria Complete Streets Program. We need to keep the current four lanes on Seminary open to vehicular traffic. This is a major safety issue. The amount of traffic in Quaker/Howard and Seminary from residents, the hospital and emergency vehicles makes this an extremely busy thoroughfare. By decreasing lanes this significant you will cause more vehicular accidents. Thank you in advance.
170552	TES_CMPL TSTRTS	03/18/2019 12:54	Complete Streets Requests	TES_TRAN SPLN	I strongly oppose the unnecessary narrowing of Seminary Road as part of the Alexandria Complete Streets Program. Such action won't make Alexandria better, but in fact, will put it first - or near first - on the list of worst places to live in the VA, MD, DC area. While good planning does require consideration of various options, choosing the worst option is a mark of bad decision-making and will only result in increasing anxiety and str [See Existing Comments for complete initial description.]
170696	TES_CMPL TSTRTS	03/19/2019 01:16	Complete Streets Requests	TES_TRAN SPLN	I oppose the narrowing of Seminary Road as part of the Alexandria Complete Streets Program. We need to keep the current four lanes on Seminary open to vehicular traffic.
170699	TES_CMPL TSTRTS	03/19/2019 01:47	Complete Streets Requests	TES_TRAN SPLN	I oppose the narrowing of Seminary Road as part of the Alexandria Complete Streets Program. We need to keep the current four lanes on Seminary open to vehicular traffic. Narrowing the road to two lanes will affect the travel time of emergency vehicles headed to the hospital. A travel time difference of even a few minutes can make the difference between life and death for some patients.
170710	TES_CMPL TSTRTS	03/19/2019 02:35	Complete Streets Requests	TES_TRAN SPLN	The proposal to narrow seminary road is ridiculous to include a bike lane- there is more traffic in this area then ever before yet people in the City want to add a bike lane so we can sound like we are environmentally friendly yet the amount of bike traffic is minuscule vs car traffic please have some common sense and stop narrowing the roads - it will only contribute to more aggressive drinking as it will add more delays
170713	TES_CMPL TSTRTS	03/19/2019 03:09	Complete Streets Requests	TES_TRAN SPLN	Problem address entered by customer: 5270 Duke Street Apt 415I support the City's Vision Zero and Complete Streets policies and the application of those policies to Seminary Road. I know from personalexperience that Seminary Road is not safe and needs to be changed and reconfigured. The streets should be safe for all residents, including cyclists and pedestrians. The 2016 King Street project demonstrates that City staff know how to r [See Existing Comments for complete initial description.]
170790	TES_CMPL TSTRTS	03/19/2019 09:19	Complete Streets Requests	TES_TRAN SPLN	I oppose the narrowing of Seminary Road as part of the Alexandria Complete Streets Program. We need to keep the current four lanes on Seminary open to vehicular traffic. No convincing data has been presented demonstrating a safety problem on Seminary, a street on which the speed limit has already been reduced to 25 mph. Reducing lanes is a solution looking for a problem. I am a bicyclist myself and believe bicycling should be encouraged a [See Existing Comments for complete initial description.]
170663	TES_CMPL TSTRTS	03/19/2019 10:36	Complete Streets Requests	TES_TRAN SPLN	I strongly oppose the narrowing of Seminary Road as part of the Alexandria Complete Streets Program. We need to keep the current four lanes on Seminary open to vehicular traffic. Otherwise, the cut-through traffic will increase even more in our West End neighborhoods (already a huge problem in rush hour when Seminary and/or Van Dorn are backed up), where they are driving above residential speed limits and putting pedestrians (especially children walking to/from school) at risk.
170665	TES_CMPL TSTRTS	03/19/2019 10:52	Complete Streets Requests	TES_TRAN SPLN	I oppose the narrowing of Seminary Road as part of the Alexandria Complete Streets Program. We need to keep the current four lanes on Seminary open to vehicular traffic. This will create more congestion and back-ups on our streets. I understand the city doesn't want to encourage cut-through traffic, but if this is done it will not cut down of traffic through the city. If it cuts down on the total number of cars using this section of Semin [See Existing Comments for complete initial description.]



170666	TES_CMPL TSTRTS	03/19/2019 10:55	Complete Streets Requests	TES_TRAN SPLN	Dear Mayor Wilson, Vice Mayor Bennett-Parker, and the rest of City Council,My name is Jake Jakubek and I live at 5270 Duke Street Apt 415 in the West End of the city. I volunteer with BPAC and serve on the Alexandria Transportation Commission.The purpose of me writing today is to voice my support for the proposed changes on Seminary Road. What is being proposed for Seminary Road is consistent with the Transportation Master Plan, t [See Existing Comments for complete initial description.]
170671	TES_CMPL TSTRTS	03/19/2019 11:19	Complete Streets Requests	TES_TRAN SPLN	I support the City's Vision Zero and Complete Streets policies and theapplication of those policies to Seminary Road. I know from personalexperience as I live directly on the street that is is not safe for pedestrians. I invite anyone on council to spend 30 minutes with me observing the road, I submit that you will come away with a better appreciation that Seminary Road is not safe and needs to bechanged/reconfigured. The 2016 Ki [See Existing Comments for complete initial description.]
170682	TES_CMPL TSTRTS	03/19/2019 11:38	Complete Streets Requests	TES_TRAN SPLN	I support the City's Vision Zero and Complete streets policies and hope that Seminary gets the same treatment as King St.I regularly use Seminary Road to get to the Virginia Tech campus in Falls Church. When I drive at the speed limit, I'm regularly passed by cars that are clearly exceeding the posted speed and generally disregarding the rules. Things get more dodgy when entitled drivers think that Seminary is some kind of car slal [See Existing Comments for complete initial description.]
170685	TES_CMPL TSTRTS	03/19/2019 11:58	Complete Streets Requests	TES_TRAN SPLN	I oppose the narrowing of Seminary Road as part of the Alexandria Complete Streets Program. We need to keep the current four lanes on Seminary open to vehicular traffic.
170689	TES_CMPL TSTRTS	03/19/2019 12:21	Complete Streets Requests	TES_TRAN SPLN	I oppose the narrowing of Seminary Road as part of the Alexandria Complete Streets Program. We need to keep the current four lanes on Seminary open to vehicular traffic.Rationale is untenable. Increase in accidents nationwide due to negligence of pedestrians as well as drivers using phones and not looking where they're going.
170872	TES_CMPL TSTRTS	03/20/2019 01:51	Complete Streets Requests	TES_TRAN SPLN	I vehemently oppose the narrowing of Seminary Road. It clearly puts the demands of a few influential bicyclists above the quality of life for many hard working citizens. WHY would City Council do such a thing? I think biking is great for leisure activity by CHOICE for a small portion of citizens. Tremendous resources are being squandered. WHAT self-serving reasons are forcing this on the general public? It seems no reasonable arguments are being heard. WHY???WHY??? WHY???
170885	TES_CMPL TSTRTS	03/20/2019 03:06	Complete Streets Requests	TES_TRAN SPLN	There is a significant public safety issue currently in existence with the recent opening of the new residential development in and around Stabler Lane and Cameron Station Blvd. It is wonderful to see so many of the residents of the homes and the Senior Living complex making there way across the street to avail of Armistead Boothe Park, however there is no crosswalk. I realize road will eventually be repaved, however for the immedia [See Existing Comments for complete initial description.]
170915	TES_CMPL TSTRTS	03/20/2019 07:45	Complete Streets Requests	TES_TRAN SPLN	Please don't mess up Seminary Road like King Street has been messed up for the tiny # of bikers that want bike lanes. You'll harm many for a small few.
170838	TES_CMPL TSTRTS	03/20/2019 10:24	Complete Streets Requests	TES_TRAN SPLN	Good morning Mayor Wilson, Vice Mayor Bennett-Parker, and City Council,It was very nice to see you at the 2019 Washington Region Vision Zero Summit, Mayor Wilson. I very much appreciated you comments in the Closing Plenary session Vision Zero: 2019 and Beyond! Today, I am writing as a resident of Alexandria in support of the City's Vision Zero and Complete Streets policies and the application of those policies to Seminary Road. I [See Existing Comments for complete initial description.]
171036	TES_CMPL TSTRTS	03/21/2019 04:14	Complete Streets Requests	TES_TRAN SPLN	I plan to attend the 3/25 meeting with T&ES to hear about the Seminary Road Complete Streets Project. I am very much opposed to reducing Seminary Road from its current figuration of 4 travel lanes. While I appreciate the need for cars to slow down and for pedestrians to feel safer walking on Seminary, I believe the impact on those of us who depend on this road will be too great. I agree with the addition of crosswalks to facilitate pedest [See Existing Comments for complete initial description.]
171037	TES_CMPL TSTRTS	03/21/2019 04:14	Complete Streets Requests	TES_TRAN SPLN	To Members of the City CouncilWe understand that the City of Alexandria is considering changes that would reduce excessive speeds and increase safety along Seminary Road, specifically between Howard Street and Quaker Lane. City staff are undertaking a fact-based analysis of vehicular traffic, pedestrian crossings and other safety issues. Numerous avenues are being pursued to obtain public input, including general informational meetings [See Existing Comments for complete initial description.]
170937	TES_CMPL TSTRTS	03/21/2019 06:48	Complete Streets Requests	TES_TRAN SPLN	I oppose the narrowing of Seminary Road. There is nowhere near the demand for bike traffic to justify this! And stats re accidents, also, do not justify such a drastic change for drivers.Thank you for your attention to this comment.
170974	TES_CMPL TSTRTS	03/21/2019 11:28	Complete Streets Requests	TES_TRAN SPLN	I oppose the narrowing of Seminary Road as part of the Alexandria Complete Streets Program. We need to keep the current four lanes on Seminary open to vehicular traffic. My primary reason for opposition is the proposed move of MacArthur school to Patrick Henry.The traffic situation bordering the school today is unsafe, and unmanaged, despite many attempts by neighbors to alert the city. Doubling the amount of students, buses, and te [See Existing Comments for complete initial description.]
170992	TES_CMPL TSTRTS	03/21/2019 12:20	Complete Streets Requests	TES_TRAN SPLN	Honorable Mayor, Vice Mayor, Council Members:I am writing regarding the long-overdue upgrades on Seminary Road to make it a safer and less threatening environment for all road users. As it appears, there has been a misinformation campaign based on false and misleading information and I want to ensure that you do not collectively fall prey to NIMBY-motivated egoists.I support the City's Vision Zero and Complete Streets policies and [See Existing Comments for complete initial description.]

171224	TES_CMPL TSTRTS	03/23/2019 02:25	Complete Streets Requests	TES_TRAN SPLN	Seminary Road 'Complete Streets' Project to Remove Two Lanes of TrafficI write this as a tax-paying Alexandria property owner for three decades who drives on Seminary Road on an almost daily basis. I have read all the documents posted by the city on this issue, and studies the 3 alternative designs. Keep Seminary Road 4 Lanes!Seminary Road is one of the three well-established major east-west thoroughfares for Alexandria, and tha [See Existing Comments for complete initial description.]
171241	TES_CMPL TSTRTS	03/23/2019 08:53	Complete Streets Requests	TES_TRAN SPLN	Please Choose a Complete Streets Topic "Roadway" I understand that the city is considering narrowing Seminary Road in the area of INOVA hospital to Janney's Lane. I strongly oppose this. While I appreciate the desire to slow traffic on this stretch of road, narrowing the road to 1 lane in each direction will cause a large traffic jam. We need 2 lanes in each direction to allow for cars to turn onto side streets, the Synagogue, and t [See Existing Comments for complete initial description.]
171478	TES_CMPL TSTRTS	03/25/2019 07:09	Complete Streets Requests	TES_TRAN SPLN	Seminary Road should remain a two-lanes-each-way thoroughfare. Bycycle lanes should not be allowed to make this neighborhood street into nice idea but a nuisance for people who live in the area and drive the street several times a day. Bycycle use will remain minimal no matter how much it maybe desired by a very few people.
171488	TES_CMPL TSTRTS	03/25/2019 09:27	Complete Streets Requests	TES_TRAN SPLN	Please Choose a Complete Streets Topic "Traffic Calming" I was not able to attend the meeting tonight regarding Seminary Road, but want to voice my support for alternative plan 3, which addresses the identified safety concerns, and is in line with many of the initiatives the City has identified as priorities. Those that are against the plan simply want to continue to speed down the road putting lives in danger.
171489	TES_CMPL TSTRTS	03/25/2019 09:37	Complete Streets Requests	TES_TRAN SPLN	Please Choose a Complete Streets Topic "General Inquiry" This message is for Christine, from TES. I attended the meeting regarding the Seminary Road project. You handled the very difficult meeting with poise and calmness. You sounded very self-assured and confident, even under a terribly difficult situation and handled the many difficult people you encountered with grace. While I was quite embarrassed by the way my neighbors acted, I [See Existing Comments for complete initial description.]
171585	TRAFENG_ COMPLETE_ ST	03/26/2019 01:43	Traffic Engineering - Complete Streets Issue	TES_TRAN SPLN	Please add my voice to residents in opposition to narrowing Seminary Rd. I live on Janneys Lane and use Seminary to get to most of my doctors, the Library, Aldi's, planet Fitness, and most importantly, the Hospital. Last visit to the emergency room at night, there are no buses, and biking was not an option. Why not limit the Maryland cut through drivers; rather than make Alexandrians lives more miserable
171634	SIGBULBO UT	03/26/2019 08:09	Traffic Signals - Bulb Out	TES_TRAF FIC_OPS	What is the color? "Red" What direction were you heading? "Corner seminary and Quaker south side "Cross walk button doesn't work. Needs immediate repair. Very dangerous intersection because of frequent moving violations, particularly in morning rush.
171574	TES_CMPL TSTRTS	03/26/2019 12:40	Complete Streets Requests	TES_TRAN SPLN	I am writing in opposition to proposals to reduce the number of lanes on Seminary Ave. between Howard and Quaker. The project description states 3 goals. With respect to the first, "Improve safety and accessibility for all users", there is no evidence - nada, zero, zilch - for the proposition that this stretch of road is unsafe because it is four lanes. Any refiguration is likely to have minimum or no impact on safety. With respect t [See Existing Comments for complete initial description.]
171712	TRAFENG_ COMPLETE_ ST	03/27/2019 01:14	Traffic Engineering - Complete Streets Issue	TES_TRAN SPLN	Problem address entered by customer: 3916 COLONEL ELLIS AVETo my elected officials: I would like to know, who, the Council, Mayor, Vice Mayor, or the people who are in charge of deciding road/traffic changes, I should address this to. So I'm sending this message to you all. I have lived in Seminary Ridge for several years. Having been out of pocket recently. It's come to my attention, that changes are coming to a much used road in m [See Existing Comments for complete initial description.]
171719	TRAFENG_ COMPLETE_ ST	03/27/2019 02:15	Traffic Engineering - Complete Streets Issue	TES_TRAN SPLN	I STRONGLY oppose the narrowing of Seminary Road in any way!! Just please fix the awful potholes, repair and repaint the road and don't keep us waiting until September to do it!!! We absolutely need all four lanes for vehicular traffic—that is a main artery for cars and emergency vehicles like fire trucks and ambulances! I myself have used Seminary Road to get to the emergency room twice in the past six months. If traffic had been im [See Existing Comments for complete initial description.]
171646	STRTPOTH LERPR	03/27/2019 12:32	Streets - Potholes	TES_STMAI NT	Where is it located? "In the road" Is it impacting traffic flow? "YES" Please describe the location "seminary road "There are a lot of potholes on Seminary Road, that need to be fixed.
171857	TRAFENG_ COMPLETE_ ST	03/28/2019 03:13	Traffic Engineering - Complete Streets Issue	TES_TRAN SPLN	Seminary Road (N.Quaker to Howard) needs to be improved for the safety of pedisterians, School Children, and Motorists. Crosswalks are needed; Islands supporting partial crossings and allow left turns.. These can be done with little or no impact to traffic even after artificial growth is inserted.. Professional Federal and State studies support a single through lane in each direction for the volume on the East section of Seminary Road. Lis [See Existing Comments for complete initial description.]
171867	TRAFENG_ COMPLETE_ ST	03/28/2019 03:57	Traffic Engineering - Complete Streets Issue	TES_TRAN SPLN	I am a constituent very much opposed to narrowing Seminary Road. How are ambulances supposed to get to the hospital when the road is clogged with traffic? How will busses carrying Hammond students arrive on time? And how am I supposed to get my preschoolers to Creative Playschool on North Howard Street? The traffic will just be unmanageable.
171877	TRAFENG_ COMPLETE_ ST	03/28/2019 04:29	Traffic Engineering - Complete Streets Issue	TES_TRAN SPLN	Dear Mr Mayor and Members of Council, Please leave Seminary Rd as is. I am a city resident. Thank you, Clarence Burke

171808	SIGPEDMLF	03/28/2019 10:48	Pedestrians - Crossing Signal Malfunction	TES_TRAF FIC_OPS	resident reported cross walk signal button isn't working on the corner of seminary rd & n quaker lane.
172001	PMRKMISSING	03/29/2019 06:06	Traffic Markings - Missing	TES_TRAF FIC_OPS	What type of marking is this? "Other"Please describe the marking "lane divider barrier"The barriers that have been placed at Seminary and Kenmore Avenue are missing the last 2 posts now. This barrier has not prevented people from turning onto Kenmore from Seminary. Vehicles now make the turn onto Kenmore after going around the front of the barriers and driving into head on traffic coming off the Seminary circle. The missing pos [See Existing Comments for complete initial description.]
172062	TES_CMPL TSTRTS	03/31/2019 03:35	Complete Streets Requests	TES_TRAN SPLN	I strongly oppose narrowing Seminary road or any other city streets.
172067	TES_CMPL TSTRTS	03/31/2019 05:46	Complete Streets Requests	TES_TRAN SPLN	Problem address entered by customer: 3737 Seminary RoadRegarding the Seminary Road Project:We live at the Seminary and have kids at Douglas MacArthur Elementary School (DMES). We are concerned about the road project reducing the capacity of the road right at the time that ACPS moves DMES (~750 people?) to the Patrick Henry School location. That's a big population shift but this one would come with a kicker in the DMES will be turn [See Existing Comments for complete initial description.]
172049	TES_CMPL TSTRTS	03/31/2019 10:54	Complete Streets Requests	TES_TRAN SPLN	I oppose the narrowing of Seminary Road as part of the Alexandria Complete Streets Program. We need to keep the current four lanes on Seminary open to vehicular traffic.
172144	TES_CMPL TSTRTS	04/1/2019 01:09	Complete Streets Requests	TES_TRAN SPLN	Do not lessen lanes on Seminary road or anywhere else in Alexandria. It is nearly impossible now to get around the city thanks to your bikes lanes on King street and bus lanes on Route 1. If you want to slow down cars and move traffic better than stop giving into developers who aren't helping improve our schools or our roads. Focus on what a city should do fix pot holes, fix our schools. No more bike lanes!mean
172089	TES_CMPL TSTRTS	04/1/2019 09:00	Complete Streets Requests	TES_TRAN SPLN	I am against narrowing Seminary Rd. I am also appalled at your decision about letting a slaughter house operate nearby!,c
172226	SIGPROBD ETECT	04/2/2019 07:55	Traffic Signals - Vehicle Detection Problem	TES_TRAF FIC_OPS	Please let us know which signalized intersection you are commenting on. "Seminary Road and N Howard Street"What problem have you observed? "Long wait for signal change"The timing of the traffic signals at this intersection need to be fixed. Around 5:15 every morning, usually have to wait 3-4 minutes for the light to change in order to turn left from N Howard Street onto Seminary Road going west. The pedestrian walk signal crossing [See Existing Comments for complete initial description.]
172323	TES_CMPL TSTRTS	04/2/2019 10:30	Complete Streets Requests	TES_TRAN SPLN	I oppose the narrowing of Seminary Road as part of the Alexandria Complete Streets Program. I believe that need the current four lanes on Seminary should be kept open to vehicular traffic.
172245	TES_CMPL TSTRTS	04/2/2019 10:36	Complete Streets Requests	TES_TRAN SPLN	Please Choose a Complete Streets Topic "General Inquiry"I have just filled out the survey about traffic on Seminary Road and am very annoyed that the "Other" options were limited to 100 characters. Even old Twitter allowed more! Perhaps even more annoying is the fact that the character limit was not provided in advance, either explicitly (a notice above or below the box) or implicitly (by preventing input after 100 characters). Ver [See Existing Comments for complete initial description.]
172681	TES_CMPL TSTRTS	04/7/2019 06:44	Complete Streets Requests	TES_TRAN SPLN	Subject: Income-level not statistics behind Seminary Road Traffic Proposal? All, thank you for your service ... I am posting a letter below comparing traffic safety on east and west Seminary Road that the Alexandria Gazette printed this past week (for space, the Gazette letter was slightly shortened, but the additional sentences are in the below). It highlights a lack of accountability in our City's focus on where its safety funds ar [See Existing Comments for complete initial description.]
172891	SIGPEDMLF	04/9/2019 01:53	Pedestrians - Crossing Signal Malfunction	TES_TRAF FIC_OPS	resident reported walk signal outage on the corner of seminary rd & n Quaker lane
172925	TES_CMPL TSTRTS	04/9/2019 04:56	Complete Streets Requests	TES_TRAN SPLN	Please Choose a Complete Streets Topic "Roadway"I am absolutely opposed to reducing the lanes on Seminary Road! If the city reduces these lanes it will further increase thru-traffic density on Duke Street and Braddock Road. There are generous set-backs on this section of Seminary Road which makes visibility and maneuvering far safer than most Alexandria streets. [Kerb parking at crossroads throughout Old town is totally oblivious t [See Existing Comments for complete initial description.]
172845	STRTPOTHLERPR	04/9/2019 09:47	Streets - Potholes	TES_STMAIN T	Where is it located? "In the road"Is it impacting traffic flow? "NO"Please describe the location "Seminary Rd northbound over 395"There is a pothole on Seminary Rd northbound between I-395 southbound exit and Mark Center Ave, in left lane of Seminary Rd. There are also some potholes on the cross road when you're going on southbound seminary Road and turn left to go onto 395 northbound and that bridge area on Seminary Rd between the two sections of Seminary and above 395.
172944	TES_CMPL TSTRTS	04/10/2019 07:22	Complete Streets Requests	TES_TRAN SPLN	I just read the Seminary Hill Association's draft resolution and voted in their poll. I asked one board member why there was no alternative in the poll for leaving Seminary Road the way it is. He said that the City "would never go for it. "Why is it that even large civic associations feel so powerless when it comes to Complete Streets road redesign projects? It's because the Alexandria Bicycle and Pedestrian Advisory Committee (BPAC), [See Existing Comments for complete initial description.]

172986	TES_CMPL TSTRTS	04/10/2019 11:01	Complete Streets Requests	TES_TRAN SPLN	To the city council,I oppose the narrowing of Seminary Road as part of the Alexandria Complete Streets Program. We need to keep the current four lanes on Seminary open to vehicular traffic. The school board is contemplating using the old Patrick Henry for the MacArthur student during the school building process thereby adding additional traffic on a busy road which you will make triply worse by narrowing the road. I'm on that road every [See Existing Comments for complete initial description.]
173131	TRAFENG_ COMPLETE_ ST	04/11/2019 07:07	Traffic Engineering - Complete Streets Issue	TES_TRAN SPLN	Please do not change seminary road. We have many more cars and traffic is already impossible. Its discrimating for older residents and for the physically disabled. Bikes and cars must share the road without changes making roads smaller.
173212	TES_CMPL TSTRTS	04/12/2019 04:37	Complete Streets Requests	TES_TRAN SPLN	I strongly oppose proposals to narrow Seminary Road. I support Seminary Hill Association's "Alternative 4", and none of the City's three redesign alternatives. The SHA proposal specifically excludes bike lanes and preserves 4-lane design. The proposal for slightly narrower lanes and moving curbs further out, along with automated mid-block crosswalks, will improve pedestrian safety.
173182	TES_CMPL TSTRTS	04/12/2019 11:37	Complete Streets Requests	TES_TRAN SPLN	I understand that City Council is considering narrowing Seminary Road to two lanes from four. I am opposed to this action. Seminary Road has been a four lane road for more than the 50+ years that I have lived and has worked well. Traffic is already severely congested in this part of town. Narrowing the road will make this problem worse. Council needs to stop making decisions in the name of political correctness and start making decis [See Existing Comments for complete initial description.]
173184	TES_CMPL TSTRTS	04/12/2019 11:48	Complete Streets Requests	TES_TRAN SPLN	I am writing to oppose the narrowing of lanes on Seminary Road to make more room for bike lanes. The bottlenecks across Alexandria have grown astronomically over the years and narrowing roads has done nothing but exacerbate the problems. I drive and live in the area daily and narrowing these lanes will be a complete disaster. I rarely see bikers on these roads. My son bikes often as he trains for various Ironman competitions and he thi [See Existing Comments for complete initial description.]
173269	TES_CMPL TSTRTS	04/13/2019 06:30	Complete Streets Requests	TES_TRAN SPLN	To the Mayor and City Council of Alexandria, VA I am firmly against removing any vehicle lanes in order to add bike lanes on Seminary Road between Howard Street and Quaker Lane. The traffic in that area is already congested and due to our growing population will only get worse. We are a major city and no longer a quaint, sleepy town. The population is exploding and the infrastructure cannot handle the influx and removing vehicle lanes [See Existing Comments for complete initial description.]
173442	SIGMALFUN CTION	04/15/2019 04:04	Traffic Signal Malfunction	TES_TRAF FIC_OPS	APD DEC reported traffic signal on seminary rd and n Quaker lane position the wrong way due to strong wind.
173770	TES_CMPL TSTRTS	04/18/2019 06:10	Complete Streets Requests	TES_TRAN SPLN	In this week's Alexandria Times, you can find yet another indictment of the City's misdirected approach to improving safety on streets. Joe Sestak's column relates the tale of two ends of the street -- East Seminary (the City's target for improving safety on Seminary) and West Seminary, where the demographic is poorer and the the accident rate is 17 times higher. See attached. If the non-government membership organization, Alexandria B [See Existing Comments for complete initial description.]
173939	TRAFENG_ COMPLETE_ ST	04/20/2019 10:15	Traffic Engineering - Complete Streets Issue	TES_TRAN SPLN	Please follow through on the long-term Transportation Master Plan for Seminary Road. I want safer, non-gridlocked streets. I am aware that change is difficult but, if we don't provide alternatives to driving, everyone will be stuck in gridlock. Gridlock helps no one.
173916	TES_CMPL TSTRTS	04/20/2019 11:59	Complete Streets Requests	TES_TRAN SPLN	Please Choose a Complete Streets Topic "Traffic Calming" I completely support fixing Seminary Road by changing from 4 lanes to 3 lanes. It makes sense for all modes of transportation, and it will keep the traffic flowing. It also connects the existing portions of Seminary eastbound at N. Howard which reduces to one lane to go straight at that light (existing). Additionally, at the intersection with Seminary / Janneys Lane, it is on [See Existing Comments for complete initial description.]
173968	TES_SCTE RDCKLESS	04/21/2019 03:54	Scooters and Dockless Mobility Issues	TES_TRAN SPLN	I would like the City Council to prohibit the use of powered and non-powered rental scooters within the City and on private property without ownership's permission. Today a band of juveniles trespassed into our private townhouse community (Seminary Park) a left a Bolt Electric Scooter parked in our driveway. These device are a nuisance and a safety hazard to both the operators, pedestrians, and motorists. A business that allows the [See Existing Comments for complete initial description.]
174198	TES_CMPL TSTRTS	04/23/2019 02:42	Complete Streets Requests	TES_TRAN SPLN	Dear Mr. Mayor, Ms. Vice-Mayor, and City Council, Recently, I've heard some rumors that city staff are recommending not to pursue any changes to Seminary Road as part of that road's Complete Streets project. This is extremely disappointing and I implore you to discuss this with staff with the goal of changing their mind. If we give up on this project in the face of opposition, then we are abandoning policies and initiatives that cit [See Existing Comments for complete initial description.]
174201	TES_CMPL TSTRTS	04/23/2019 02:54	Complete Streets Requests	TES_TRAN SPLN	I am writing to express my continued support for the Complete Streets and Vision Zero initiatives in our city. There are few things more important than ensuring that all residents have the opportunity to safely use our streets. The proposed road diet for Seminary Road does just that, and I therefore encourage all of you to support it. Thank you.

174357	TES_CMPL TSTRTS	04/24/2019 05:07	Complete Streets Requests	TES_TRAN SPLN	Problem address entered by customer: 622 Fort Williams PkwyMayor Wilson and City Council members, Pleased ask T&ES to bring forward a four-to-three road diet as the Federal Highway Administration (FHWA) - recommended solution for the section of Seminary Road east of N. Howard Street. Please also let me know if you would walk with me and others who live here to see what we see, and envision what we envision, namely, safe streets for pe [See Existing Comments for complete initial description.]
174455	TES_CMPL TSTRTS	04/25/2019 01:32	Complete Streets Requests	TES_TRAN SPLN	Please Do Not follow through with your plan to narrow any major arteries, including Seminary Road. I would love for the city to be more bike-friendly, but it needs to be done in a realistic fashion. And jamming up are roads when you have allowed more development is not fair to the majority of the citizens in the city.
174485	TES_CMPL TSTRTS	04/25/2019 03:21	Complete Streets Requests	TES_TRAN SPLN	Please DO NOT follow through on the long term Transportation Master Plan for Seminary Road. I've experienced the gridlock on King Street since the narrowing of the lanes. I need to use my car to go to my doctor, to go to the grocery store, to go to work and to live my life in Alexandria. I have been a home owner here for over 25 years. I do not see any advantage for the majority of Alexandria's citizens to narrow the roads in create m [See Existing Comments for complete initial description.]
174500	TES_CMPL TSTRTS	04/25/2019 05:22	Complete Streets Requests	TES_TRAN SPLN	By adopting a Complete Streets Policy in 2011, the City of Alexandria directed transportation planners to design and operate the entire right of way to enable safe access for all users, regardless of age, ability, or mode of transportation. The section of Seminary Road east of Howard Street is ideally suited for the FHWA's proven approach, a four-to-three road diet, since this section of roadway has excess capacity: motor vehicle traffic [See Existing Comments for complete initial description.]
174502	TES_CMPL TSTRTS	04/25/2019 05:31	Complete Streets Requests	TES_TRAN SPLN	About the Seminary Road survey: I took the survey, said I supported the option with center left turn lanes, pedestrian refuge islands and buffer space & bike lanes. I understand several hundred others said the same. I'm writing basically to tell you I really meant it, and to urge you to adopt this option. By adopting a Complete Streets Policy in 2011, the City of Alexandria directed transportation planners to design and operate the en [See Existing Comments for complete initial description.]
174512	TES_CMPL TSTRTS	04/25/2019 10:09	Complete Streets Requests	TES_TRAN SPLN	Please Choose a Complete Streets Topic "Roadway"We absolutely need changes on Seminary Road. Given that cars driving east on Seminary (at N. Howard) are ALREADY constrained to ONE lane going straight on Seminary, it makes total sense to KEEP it one through lane for the remaining .7 miles and ADD more efficient and safer road features like center left-turn lanes, pedestrian refuge islands and buffer space/bike lanes. The research [See Existing Comments for complete initial description.]
174435	TES_CMPL TSTRTS	04/25/2019 11:14	Complete Streets Requests	TES_TRAN SPLN	Dear Mayor Wilson, Vice Mayor Bennett-Parker, and members of City Council:Transportation and Environmental Services (T&ES) has been studying ways to improve safety for all users along Seminary Road east of Howard Street. I support alternative 3 which would reduce this portion of Seminary Road from four lanes to three. Alternative 3 is the only solutions that is consistent with vision zero and complete streets policies that the City ha [See Existing Comments for complete initial description.]
174517	TES_CMPL TSTRTS	04/25/2019 11:28	Complete Streets Requests	TES_TRAN SPLN	Please Make Seminary Road Safer for all to use, and support changing Seminary to three lanes. I live on Seminary Road, and experience the unsafe conditions first hand. It is dangerous to walk on, bike on, and drive on, and we have trouble even getting out of our driveway. I have personally viewed many crashes. The City has the opportunity to make our community better, and Seminary Road safer for families, pedestrians, bicyclists, and [See Existing Comments for complete initial description.]
174451	TES_CMPL TSTRTS	04/25/2019 12:39	Complete Streets Requests	TES_TRAN SPLN	Problem address entered by customer: 802 S Arlington Mill Dr #302Mayor Wilson and Alexandria Council,I don't live in Alexandria so it may be very easy to discount my comments on Seminary Road as being invalid. I hope you will consider the impact that staying committed to implementing the Complete Streets policy, Vision Zero Plan and proven data informed design that bringing for Design Option 3 on Seminary Road meets.My friend Da [See Existing Comments for complete initial description.]
174595	TES_CMPL TSTRTS	04/26/2019 04:25	Complete Streets Requests	TES_TRAN SPLN	I'd really like to see some safer infrastructure along Seminary Road, as a cyclist, and as a driver. From my home on N Pickett St, there isn't really a direct route across town that is separated from car traffic, and including bike lanes along the majority of Seminary would change that. Four lanes is unnecessary for cars- traffic travels in packs, with large gaps in between, and most of this traffic is single file. Multiple intersecti [See Existing Comments for complete initial description.]
174597	TES_BICYR CKREQ	04/26/2019 04:28	Bicycle Rack Request	TES_TRAN SPLN	Business name ( if applicable ) "Goldfish Swim School"How many racks are you requesting? "3 ( parks 6 bikes )"There are no bike racks for the Alexandria Commons shopping area and parking is insane. If there were bike racks i think it would clear up Duke during congested times as people go to eat there or use the different shops. I would bike if i had somewhere to place my bike.
174598	TES_CMPL TSTRTS	04/26/2019 04:45	Complete Streets Requests	TES_TRAN SPLN	Make Seminary Road Safel am a healthy 76 year old veteran and I try to be a good steward of our environment. I ride my bike to the gym & Home Depot rather than drive. About once a month I ride my bike to Spokes Etc on Quaker Lane, but I may need to start driving if Seminary Road is not improved. My route is up N Pegram St to Seminary Road and then to Quaker Lane. Please consider Alternative 3 with bikes lane for my safety. We wan [See Existing Comments for complete initial description.]



174600	TES_CMPL TSTRTS	04/26/2019 04:48	Complete Streets Requests	TES_TRAN SPLN	RE: Seminary RoadA road safety professional who resided in Alexandria until December 2018, I am dedicated to the city's safety and very familiar with Seminary Road. I serve as the Director of the North American Office of the FIA Foundation, an international organization dedicated to safe and sustainable mobility. I have expertise in improving road safety for our most vulnerable road users - children, older persons, pedestrians, and cy [See Existing Comments for complete initial description.]
174601	TES_CMPL TSTRTS	04/26/2019 05:20	Complete Streets Requests	TES_TRAN SPLN	Safe streets should not be decided by a popularity contest. Data and years of expertise from the transit planning community show us that a four-to-three road diet is the right solution for roads like Seminary Road. Some drivers are unwilling to accept any inconvenience for safety. This road diet will potentially cause ONLY a five-second backup during the worst travel times. 5 seconds is worth the safety of all road users.By adopti [See Existing Comments for complete initial description.]
174603	TES_CMPL TSTRTS	04/26/2019 05:27	Complete Streets Requests	TES_TRAN SPLN	I support the Complete Streets Policy as an effort to provide safe travel for all: pedestrians, cyclists, and motor vehicles. The roads belong to all and regardless of the mode of transportation, safety outranks efficiency in my view. I am personally affected by the reduction in lanes and reduced speed limits on King Street, a corridor I use frequently, but now believe the recent changes have been positive and think it makes sense to im [See Existing Comments for complete initial description.]
174608	TES_CMPL TSTRTS	04/26/2019 06:51	Complete Streets Requests	TES_TRAN SPLN	I currently live in the District of Columbia, but having lived in Arlington and Falls Church for many years, I'm very familiar with cycling and driving on this section of Seminary road. By adopting a Complete Streets Policy in 2011, the City of Alexandria directed transportation planners to design and operate the entire right of way to enable safe access for all users, regardless of age, ability, or mode of transportation. The section [See Existing Comments for complete initial description.]
174542	TES_CMPL TSTRTS	04/26/2019 10:14	Complete Streets Requests	TES_TRAN SPLN	Re Seminary road bike and pedestrian safety. Please select a solution with center left turn lanes, pedestrian refuge islands and buffer space/bike lanes.
174613	TES_CMPL TSTRTS	04/26/2019 11:54	Complete Streets Requests	TES_TRAN SPLN	Mayor, Vice Mayor and City Council Members: As someone who has dedicated herself to public service, I feel strongly about advocating for doing the right thing for the tax payer - even when it isn't popular. I also feel very strongly that Seminary Road, along with many other city streets, should be repaved and revamped to include safety features for ALL modes of transportation and users - particularly the vulnerable road users. Walki [See Existing Comments for complete initial description.]
174636	TES_CMPL TSTRTS	04/27/2019 02:27	Complete Streets Requests	TES_TRAN SPLN	Dear Mayor, Vice Mayor, and City Counil,Seminary Road is not safe. As a pedestrian and a cyclist, I don't feel comfortable using this road. I'm tired of seeing all the accidents.Transportation planners know that a properly engineered four-to-three road diet is the right solution for roads like this section of Seminary Road, but opposition to change is fierce and with high congestion in the region, some drivers are not willing to risk [See Existing Comments for complete initial description.]
174637	TES_CMPL TSTRTS	04/27/2019 02:31	Complete Streets Requests	TES_TRAN SPLN	Dear Mayor, Vice Mayor, and Members of the City Council, I am writing to support PLAN 3 in the redesign of Seminary Road. I have been Vice President of Virginia Seminary for the past 6 years, live on Seminary Road, and cross Seminary Road on foot every day. In addition, the almost 200 students and faculty (along with their families) that live on the almost 88 acres of VTS property also regularly use Seminary road in various modes [See Existing Comments for complete initial description.]
174644	TES_CMPL TSTRTS	04/27/2019 07:45	Complete Streets Requests	TES_TRAN SPLN	To Whom It May Concern,I moved into the ONE house located directly on the intersection of Janneys Ln and Quaker Ln two years ago and have had a front-seat view of vehicular, pedestrian, bus and bike activity at this intersection ever since. As a Commercial Architect and someone who holds a degree in Civil Engineering, I have formed several opinions for how the intersection could be improved — I can't help it! I was unaware of the Se [See Existing Comments for complete initial description.]
174645	TES_CMPL TSTRTS	04/27/2019 08:05	Complete Streets Requests	TES_TRAN SPLN	Good evening Mayor Wilson, Vice Mayor Bennett-Parker, and City Council members,I am writing to you as a resident of Alexandria. I'm also a Vision Zero Community Organizer at WABA. My partner and I moved to Alexandria last fall and plan to stay for a long time. We love our quiet neighborhood and our friendly neighbors. Alexandria is perfect for us as we love connecting to the trail network for long runs and can ride our bikes to sh [See Existing Comments for complete initial description.]
174649	TES_CMPL TSTRTS	04/27/2019 10:35	Complete Streets Requests	TES_TRAN SPLN	By adopting a Complete Streets Policy in 2011, the City of Alexandria directed transportation planners to design and operate the entire right of way to enable safe access for all users, regardless of age, ability, or mode of transportation. The section of Seminary Road east of Howard Street is ideally suited for the FHWA's proven approach, a four-to-three road diet, since this section of roadway has excess capacity: motor vehicle traffi [See Existing Comments for complete initial description.]
174633	TES_CMPL TSTRTS	04/27/2019 12:30	Complete Streets Requests	TES_TRAN SPLN	Please choose Alternative 3 for Seminary Road!By adopting a Complete Streets Policy in 2011, the City of Alexandria directed transportation planners to design and operate the entire right of way to enable safe access for all users, regardless of age, ability, or mode of transportation. The section of Seminary Road east of Howard Street is ideally suited for the FHWA's proven approach, a four-to-three road diet, since this section of r [See Existing Comments for complete initial description.]

174686	TES_CMPL TSTRTS	04/28/2019 09:17	Complete Streets Requests	TES_TRAN SPLN	I am submitting this message of support for the plan to implement Alternative 3 to the Seminary Road plan -- change 2 lanes to 1 lane in each direction, and add bicycle lane to each direction. For 4 years, I lived on Janneys Lane, and after that, I lived in Seminary Ridge on Griffith Place for almost 16 years. During those 20 years, I would sometimes bicycle to work in Washington, DC. I jokingly referred to the part of my daily bi [See Existing Comments for complete initial description.]
174796	STRTPOTH LERPR	04/29/2019 01:14	Streets - Potholes	TES_STMAI NT	Where is it located? "In the road"Is it impacting traffic flow? "NO"Please describe the location "Seminary Rd going towards Beauregard at I395"Two potholes on Seminary Rd after one gets off I-395 southbound to Seminary and then heads towards Beauregard
175013	TES_CMPL TSTRTS	04/29/2019 04:21	Complete Streets Requests	TES_TRAN SPLN	From 2003 to 2018, I happily lived in Alexandria and loved every minute of it. I only moved to Arlington last year after a job change made it seem the sensible alternative.For the first several years, I lived in West Alexandria, not far from Seminary Road. I was a regular user of that road, and it's clear to me that it needs a "road diet." I am asking Mayor Wilson and the council to ensure that the city brings this idea to a public he [See Existing Comments for complete initial description.]
175037	TES_CMPL TSTRTS	04/29/2019 04:24	Complete Streets Requests	TES_TRAN SPLN	I support a road diet on Seminary Avenue because I use that road often and would prefer not to have to drive all the time. I like using the bus and walking and biking and I think it would be safer for a lot of people if there were fewer cars and if they could drive a more moderate and safe speed. Right now, driving seems to be my only option because it seems dangerous. If isn't I would like to see proof.
175132	TES_CMPL TSTRTS	04/29/2019 04:35	Complete Streets Requests	TES_TRAN SPLN	I work in Old Town and am writing to strongly support the plans to create protected bicycle lanes on Seminary Road. Please implement the project as quickly as possible so that we can make Alexandria a more bicycle-friendly place to be.
175218	TES_CMPL TSTRTS	04/29/2019 05:58	Complete Streets Requests	TES_TRAN SPLN	Dear Mayor Wilson and City Council Members,As a resident of Seminary Valley, my opinion to support reduced car lanes and protected bike lanes on Seminary Road may be in the minority. Every day, I drive Seminary from Pegram (the road by Hammond) to the preschool where I work at the corner of Seminary and Quaker . Every day, I count the cars that pass me because they speed. I drive because on Halloween 2016, I was hit by a car while ri [See Existing Comments for complete initial description.]
174688	STRTPOTH LERPR	04/29/2019 07:46	Streets - Potholes	TES_STMAI NT	Where is it located? "In the road"Is it impacting traffic flow? "NO"Please describe the location "Seminary Road South Right Lane either just south of Dawes or Fillmore "Really deep pothole likely to cause damage if light at intersection green and people moving through at a normal speed
174693	TES_CMPL TSTRTS	04/29/2019 08:10	Complete Streets Requests	TES_TRAN SPLN	Dear Mayor, Vice Mayor, and Council members,I am writing to urge you to stay the course on Council's commitment to Complete Streets and to making Alexandria safe for all users of our streets. Alternative 3 for Seminary Road is the only option that will improve safety for all. Seminary Road cries out for bike lanes. As it is now, it is not safe for pedestrians or bicycles.I live one block off of King Street, where bike lanes [See Existing Comments for complete initial description.]
174710	SIGPROBD ETECT	04/29/2019 08:53	Traffic Signals - Vehicle Detection Problem	TES_TRAFI C_OPS	Caller reported that the traffic light the timing is taking long. Caller waited 3 cycles for the traffic light to turn green. Is creating a lot of traffic.
174722	TES_CMPL TSTRTS	04/29/2019 09:17	Complete Streets Requests	TES_TRAN SPLN	Hello;I'm writing to add my voice to the list of Alexandria cyclists seeking improved safety designs for non-vehicle-driving users of Seminary Road. Cyclists, but also pedestrians and an increasing number of scooter users, all need improved safety-and-use options along this often-risky stretch of roadway. It does not encourage cycling or car-alternative uses today, with drivers disregarding the speed limit already and foot-crossings o [See Existing Comments for complete initial description.]
174742	TES_CMPL TSTRTS	04/29/2019 10:07	Complete Streets Requests	TES_TRAN SPLN	Hello, Mayor Wilson, Vice Mayor Bennett Parker, and City Councilors,I write to urge you to make Seminary Road a safer and more comfortable roadway for all, including motorists, pedestrians, cyclists, and neighbors. We deserve it to be a " complete street."In my view, public officials often face the challenge of choosing between what constituents say they want today versus what is better for our residents and our community in the [See Existing Comments for complete initial description.]
174793	TRAFENG_ COMPLETE_ ST	04/29/2019 12:45	Traffic Engineering - Complete Streets Issue	TES_TRAN SPLN	I'm writing to ask the council to select Alternative 3 for the Seminary Road change. I live in Alexandria and am on Seminary Road east of Howard Street almost daily. I have many friends and loved ones that cycle in this area and I want to make sure everyone is safe. At this time it's not safe for cyclist, in particular children on bikes. With all the cyclist on the road riding in this area, they should be given a safe area to cycle. [See Existing Comments for complete initial description.
176468	TES_CMPL TSTRTS	04/30/2019 06:48	Complete Streets Requests	TES_TRAN SPLN	Please install bike lanes on Seminary Road! We need to make it safer to ride. We can't continue to prioritize motorists convenience over the safety of the most vulnerable road users. Thanks!
176560	TES_CMPL TSTRTS	05/1/2019 09:08	Complete Streets Requests	TES_TRAN SPLN	Good morning,I am writing to discuss the proposed changes to Seminary Road between Quaker Lane and Howard Street. Like many of my neighbors (I live on N. Kemper St. off Jordan St.), I am concerned about congestion on Seminary (and elsewhere in the west end). However, unlike my neighbors, I do not see how making no significant changes ("option 1" in the T&ES survey) will help congestion in any way. Instead, I believe the road diet plan [See Existing Comments for complete initial description.]

176561	TES_CMPL TSTRTS	05/1/2019 09:08	Complete Streets Requests	TES_TRAN SPLN	Please Choose a Complete Streets Topic "Roadway"Good morning,I am writing to discuss the proposed changes to Seminary Road between Quaker Lane and Howard Street. Like many of my neighbors (I live on N. Kemper St. off Jordan St.), I am concerned about congestion on Seminary (and elsewhere in the west end). However, unlike my neighbors, I do not see how making no significant changes ("option 1" in the T&ES survey) will help congesti [See Existing Comments for complete initial description.]
176822	TES_CMPL TSTRTS	05/2/2019 06:10	Complete Streets Requests	TES_TRAN SPLN	I am writing in support of the road diet option 3 on Seminary Road. I am a resident on the campus of Virginia Theological Seminary.One of the reasons I chose to come to VTS was the progressive, thoughtful transportation policies I saw in place in Alexandria (via integral/twitter). However, I was disappointed when I experienced how hostile traffic can be on Seminary Road. It is awful. My wife and I chose to not have a car. We take th [See Existing Comments for complete initial description.]
176753	TES_CMPL TSTRTS	05/2/2019 11:04	Complete Streets Requests	TES_TRAN SPLN	Dear Mayor Wilson and members of city council,I am writing in regards to the proposed changes to Seminary Road and as a member of the Virginia Theological Seminary community. VTS is a residential educational institution of almost 300 faculty, staff, students, and family members. Most of us live on or adjacent to Seminary Road and many of us use public transportation to get to and from the campus. Traveling up and down Seminary Road on [See Existing Comments for complete initial description.]
176754	TES_CMPL TSTRTS	05/2/2019 11:13	Complete Streets Requests	TES_TRAN SPLN	Dear Mayor Wilson and members of city council,I am writing in regards to the proposed changes to Seminary Road and as a member of the Virginia Theological Seminary community. VTS is a residential educational institution of almost 300 faculty, staff, students, and family members. Most of us live on or adjacent to Seminary Road and many of us use public transportation to get to and from the campus. Traveling up and down Seminary Road on [See Existing Comments for complete initial description.]
176916	TES_CMPL TSTRTS	05/3/2019 01:26	Complete Streets Requests	TES_TRAN SPLN	Good afternoon,I'm not sure if it's too late to chime in on this, but I've been meaning to voice my support for the proposed road diet on Seminary Road. I've seen several posts on various listserves about the community's unhappiness with the proposal, but I do not think all of those people are fully informed about the logic behind these changes. (I'm sure some people's opinions are more nuanced than this, but from what I've seen, a lo [See Existing Comments for complete initial description.]
176920	TES_CMPL TSTRTS	05/3/2019 02:54	Complete Streets Requests	TES_TRAN SPLN	Dear Mayor Wilson and members of city council,I am writing in regards to the proposed changes to Seminary Road and as a member of the Virginia Theological Seminary community. VTS is a residential educational institution of almost 300 faculty, staff, students, and family members. Most of us live on or adjacent to Seminary Road and many of us use public transportation to get to and from the campus. Traveling up and down Seminary Road on [See Existing Comments for complete initial description.]
176923	TES_CMPL TSTRTS	05/3/2019 03:03	Complete Streets Requests	TES_TRAN SPLN	Dear Mayor Wilson and Council members,I write in support of alternative 3 for Seminary Road. I live on this thorough-fare and I can say that it functions roughly as an entrance ramp and exit to the Shirley Highway most times of the day. It's noisy; it's hard to turn left out of my driveway (sometimes hard to turn right!); and the traffic is well above posted speed limits, unless the police are watching. I can walk along the sidewalk [See Existing Comments for complete initial description.]
177203	SIGMALFUN CTION	05/6/2019 03:54	Traffic Signal Malfunction	TES_TRAF FIC_OPS	APD DEC reported traffic light isn't changing
177363	SIGPEDMLF	05/7/2019 08:57	Pedestrians - Crossing Signal Malfunction	TES_TRAF FIC_OPS	What is the problem? "Broken Button"Please describe the problem "When you push the beg button, it does not work. It does not stop the traffic so that pedestrians can cross. The cars keep going and pedestrians can not cross safely. "The newest beg button is broken. When you press it, the traffic does not stop for pedestrians at all. You have to wait for someone to push one of the other beg buttons across the street before you can cro [See Existing Comments for complete initial description.]
178091	SIGMALFUN CTION	05/14/2019 10:50	Traffic Signal Malfunction	TES_TRAF FIC_OPS	APD DEC reported lights at N Beauregard St & Seminary Rd is flashing. ETA 5mins
178703	TES_BUSS HLTREQ	05/20/2019 03:40	Bus Shelter Request	TES_TRAN SPLN	Please Choose a Bus Shelter Request Type "Request a New Bus Shelter"I live at 1601 Ivanhoe ct, we have a back brick wall facing Seminary rd all the way down to the bus stop/shelter. I have called repeatedly to have your people mow your grass, it is now over 18" high all the way to the bus stop including the island on the corner of Howard and Seminary.No excuse for this, it seems everybody else gets mowed. This property is not min [See Existing Comments for complete initial description.]
178950	TES_CMPL TSTRTS	05/22/2019 01:52	Complete Streets Requests	TES_TRAN SPLN	Please Choose a Complete Streets Topic "General Inquiry"There is a meeting scheduled on 30 May to discuss the Seminary Road Project Plan. According to the Project Page, the meeting material may not be posted until the day of the meeting. That is unacceptable as it give citizens little to no time to analysis the proposal, review the data and formulate cohesive questions for the meeting. Please post the meeting material no later than 5 days prior to the meeting.
178884	STRTPOTH LERPR	05/22/2019 07:41	Streets - Potholes	TES_STMAI NT	Where is it located? "Other"Is it impacting traffic flow? "NO"Please describe the location "On the onramp from Seminary rd to 395 north"I submitted this request about two months ago and there has been no repair and there is no request showing on map, so I'm submitting again. The pothole has been here I'd say two years and is about 2' x 1.5' and about 2 or 3 inches deep. It can be avoided but now that the tree is back in bloom, i [See Existing Comments for complete initial description.]

178931	SIGPROBDETECT	05/22/2019 11:45	Traffic Signals - Vehicle Detection Problem	TES_TRAFFIC_OPS	Please let us know which signalized intersection you are commenting on. "N Pickett and Seminary AND Seminary and Hammond Middle School AND Seminary and Library Lane" What problem have you observed? "Timing is off." The timing is off at N. Pickett and Seminary AGAIN. When you get the green light at N. Pickett to turn left (westbound on Seminary) you immediately get the red light at Hammond Middle School, then when you get the green li [See Existing Comments for complete initial description.]
179616	TES_CMPLTSTRTS	05/28/2019 03:16	Complete Streets Requests	TES_TRANSPLN	Please Choose a Complete Streets Topic "On-Street Bicycle Facility" Seminary Road should not be changed into two lanes. Does the Council not understand that Seminary Road is an Emergency Vehicle Road that requires other cars to pull over into one lane while the other lane is being used by the Emergency Vehicle. We have both a hospital and Fire Station on Seminary Road that send out EV at all hours of almost every day. As for bicycl [See Existing Comments for complete initial description.]
179624	TES_CMPLTSTRTS	05/28/2019 03:49	Complete Streets Requests	TES_TRANSPLN	As a resident of the Seminary area of Alexandria for 45 years, I have almost always found our local government to be thoughtful, responsible, and responsive to residents' needs and views. However, it appears that a major departure from good local government is about to be foisted upon us. I am writing to express my STRONG OPPOSITION to all current proposals and plans to reduce Seminary Road to fewer than four lanes of traffic. For resi [See Existing Comments for complete initial description.]
179638	TES_CMPLTSTRTS	05/28/2019 05:21	Complete Streets Requests	TES_TRANSPLN	Regarding the proposed changed to Seminary Road between N. Howard Street and Quaker Lane where Alternative 3 will take Seminary to 2 lanes with designated bicycle lanes ...I am writing to you to voice my opposition to this plan and support of the Resolution put forward by Seminary Hill Association for an Alternative 4 that preserves the 4 car lanes, while incorporating safety measures to address pedestrian concerns. Alternative 4 will: [See Existing Comments for complete initial description.]
179639	TES_CMPLTSTRTS	05/28/2019 05:23	Complete Streets Requests	TES_TRANSPLN	Please Choose a Complete Streets Topic "Roadway" Regarding the proposed changes to Seminary Road between N. Howard Street and Quaker Lane where Alternative 3 will take Seminary to 2 lanes with designated bicycle lanes ...I am writing to you to voice my opposition to this plan and support of the Resolution put forward by Seminary Hill Association for an Alternative 4 that preserves the 4 car lanes, while incorporating safety measures [See Existing Comments for complete initial description.]
179643	TES_CMPLTSTRTS	05/28/2019 05:58	Complete Streets Requests	TES_TRANSPLN	I oppose narrowing Seminary and I do not approve of outside influences having a say in how we design the roads we depend on - thank you but no thank you Lime Scooter.
179644	TES_CMPLTSTRTS	05/28/2019 06:00	Complete Streets Requests	TES_TRANSPLN	We are unable to attend the seminary road meeting on May 30th, but we want to emphasize our opposition to reducing the number of lanes on this main arterial roadway. It is totally inconceivable that outside bicycle groups and scooter companies would have any say in what is a essentially a community decision. Scooter riders with no helmets are accidents waiting to happen. And this stretch of road has been safer than most up to this poin [See Existing Comments for complete initial description.]
179645	TES_CMPLTSTRTS	05/28/2019 06:05	Complete Streets Requests	TES_TRANSPLN	Problem address entered by customer: 1437 JANNEY'S LAI live on Janneys Lane. I strongly oppose any reduction in vehicular travel lanes on Seminary Road. I am disturbed that the bicycle and scooter companies from outside Alexandria are playing a role in forcing reductions in travel lanes. I'm 68 years old. I don't bike or scooter, but I do go to doctors at Seminary and 395, the hospital, the library, Planet Fitness -- all on Seminar [See Existing Comments for complete initial description.]
179511	SIGBULBOUT	05/28/2019 09:11	Traffic Signals - Bulb Out	TES_TRAFFIC_OPS	What is the color? "Red" What direction were you heading? "Seminary (Westbound)" Westbound Seminary Rd at Beauregard St triple left turn onto Beauregard. Two of three left turn red arrows are dark.
179856	TES_CMPLTSTRTS	05/30/2019 10:36	Complete Streets Requests	TES_TRANSPLN	5.30.2019 Dear Mayor, Vice Mayor and City Council Members, Attached you will find my thoughts and concerns regarding the Seminary Road Complete Streets Project. I am also delivering a copy of the pictures I have taken of the N. Howard and Seminary Rd. intersection to City Hall. I hope that these pictures will be shared with all of you. I am in hopes that calm, logical, fact based thinking will be used to select the very best road [See Existing Comments for complete initial description.]
179876	TES_CMPLTSTRTS	05/30/2019 11:51	Complete Streets Requests	TES_TRANSPLN	Please Choose a Complete Streets Topic "Traffic Calming" PLEASE review the terrible, dangerous traffic situation on Seminary Road east all the way from Mark Center through to Pickett Street. I live off Pickett Road so I travel Seminary Road east daily and I witness a near-accident almost daily! I assume Mark Center developers don't care what traffic mess has ocured since the new building but the citizens sure do! The traffic trying [See Existing Comments for complete initial description.]
180023	TES_CMPLTSTRTS	05/31/2019 01:09	Complete Streets Requests	TES_TRANSPLN	I just read the T&ES proposal for Seminary Road and would like to relay some comments. I don't live in the Seminary Road area, but I do live in Alexandria (Del Ray) and frequently drive the section of Seminary Road that's under consideration. I can't believe that the Traffic and Parking Board or the City Council would actually waste time considering this proposal. It makes no sense to me that the City would narrow the road down to a singl [See Existing Comments for complete initial description.]
180036	TES_CMPLTSTRTS	05/31/2019 02:00	Complete Streets Requests	TES_TRANSPLN	Why is the traffic Board meeting on June 24 when two of the six members will be necessarily absent? The date of the board meeting should be rescheduled. And WHY are the conflicted members of the board not having to recuse themselves from voting on the Seminary Road issue? City Council needs to LISTEN to the local residents for a change! If this "road diet" goes through, we will remember it when it comes time for US to vote!!

180037	STRTPOTHLERPR	05/31/2019 02:04	Streets - Potholes	TES_STMAIN	Where is it located? "In the road"Is it impacting traffic flow? "YES"Please describe the location "On Seminary Rd at the circle going over Seminary Road west bound"There is a pot hole on Seminary Road at the circle going over 395 WB, needs repair and several others near the big pothole. The above picture states Van Dorn but it is not on Van Dorn but on Seminary Road at the circle.
180043	TES_CMPLTSTRTS	05/31/2019 02:43	Complete Streets Requests	TES_TRANSPLN	I have been unable to attend any of the meetings regarding the plans for the east end of Seminary Rd, but have been keeping up with reports of the meetings and the proposals being made by the Traffic Commission. I am overwhelmed with conflicting information. The city seems to be insisting that the east end of Seminary is too dangerous and must be "fixed" to fit with the Vision Zero plan, yet there is much conflicting information about the [See Existing Comments for complete initial description.]
179990	SIGPROBDETECT	05/31/2019 10:35	Traffic Signals - Vehicle Detection Problem	TES_TRAFFIC_OPS	Please let us know which signalized intersection you are commenting on. "Seminary Rd & Seminary Rd"What problem have you observed? "Hammond parking lot traffic light timing is off"Westbound Seminary between Howard and 395 has been out of whack the last two weeks during the morning rush. With plenty of time to observe the signals while sitting and waiting, the issue seems to be with the light for the Hammond parking lot. It is red [See Existing Comments for complete initial description.]
180190	TES_CMPLTSTRTS	06/2/2019 07:38	Complete Streets Requests	TES_TRANSPLN	Attached is a letter from the Seminary West Civic Association regarding the Seminary Road project proposed by T&ES.
180281	TES_CMPLTSTRTS	06/3/2019 12:09	Complete Streets Requests	TES_TRANSPLN	Any transportation alternatives considered by the city for Seminary Road should take into account the residents of the communities that will be affected and the transportation that is available to them due to family circumstances. At this phase of life, I am transporting children to school and daycare, and am unable to do so via public transportation or bicycle. This seems to be the case with a large number of my neighbors as well. I ask [See Existing Comments for complete initial description.]
180508	SIGMALFUNCTION	06/4/2019 08:41	Traffic Signal Malfunction	TES_TRAFFIC_OPS	Please let us know which signalized intersection you are commenting on. "Seminary Rd. and N. Howard St."What problem have you observed? "Need new traffic light poles"6.4.19I could not find a better topic for my request. Please pass this to the appropriate department.I want to know when the Seminary Rd. and N. Howard, Seminary Rd. and N. Jordan St. and Seminary Rd. and N. Pickett St. intersections will have new traffic light pol [See Existing Comments for complete initial description.]
180981	TRAFENG_COMPLETE_ST	06/8/2019 08:09	Traffic Engineering - Complete Streets Issue	TES_TRANSPLN	Subject: Proposed Redesign of Seminary Road-Howard to Quaker Lane support 4 traffic lanes on Seminary Road, Howard to Quaker Lane. No drop lane east of St. Stephens to Zabriskie. Keep the existing traffic signal and configuration at Seminary and Quaker-left lane right turn only, right lane straight ahead or right turn on to Quaker Lane. The proposed change would increase cut through traffic off Janneys Lane. Use passively ac [See Existing Comments for complete initial description.]
181074	TES_CMPLTSTRTS	06/10/2019 11:58	Complete Streets Requests	TES_TRANSPLN	As a 30+-year resident, I am writing in disgust about the TES's latest effort on social engineering - the Seminary Rd "diet" proposal. One would think by now that I would have become numb to the arrogance of Alexandria City Government, but I find the handling of this issue astounding. You need to fire the city manager and Mr. Lambert for repeatedly ignoring the views of city residents and, in this instance, the civic associations.
181354	STRTPOTHLERPR	06/12/2019 07:36	Streets - Potholes	TES_STMAIN	Where is it located? "In the road"Is it impacting traffic flow? "NO"Please describe the location "Eastbound Seminary Rd right at 395-N ramp intersections"Eastbound Seminary Rd leading to the left turn towards the 395N ramp is in terrible condition. There are series of deep successive potholes that are getting worse every day. Cars are swerving across lanes to avoid them and causing dangerous conditions and congestion.
181579	STRTPOTHLERPR	06/15/2019 01:56	Streets - Potholes	TES_STMAIN	Where is it located? "In the road"Is it impacting traffic flow? "YES"Please describe the location "Seminary overpass left turn to 395 north"Potholes are perpetually present on Seminary Rd over 395, but particularly bad at the left turn toward 395 North. These are deep, large potholes located just as vehicles' steering components are at sharp left-turn angles, precisely the point where damage is most likely. This is unacceptable, e [See Existing Comments for complete initial description.]
181618	STRTPOTHLERPR	06/16/2019 02:56	Streets - Potholes	TES_STMAIN	Where is it located? "In the road"Is it impacting traffic flow? "YES"Please describe the location "395 service road, under the seminary road overpass. Between the exit and entrance to 395 north. Several huge ones "Multiple deep potholes, damaging cars and tire
181626	STRTPOTHLERPR	06/16/2019 06:26	Streets - Potholes	TES_STMAIN	Where is it located? "In the road"Is it impacting traffic flow? "YES"Please describe the location "Seminary Ramp to I-395"The entire Seminary circle ramp that flies over 395 is a war zone. I don't know if this is Alexandria property, the State or Federal property but wheels are getting bent and axles broken because this section of "pavement" is at Mad Max levels of destruction. The entire circle is bad, but it is especially bad as [See Existing Comments for complete initial description.]
182453	SIGSCHLZNEFLSHMLF	06/24/2019 01:59	Traffic Signals - School Zone Flashers	TES_TRAFFIC_OPS	Please let us know which signalized intersection you are commenting on. "N. Pickett and Seminary Rd."What problem have you observed? "The Timinig is off"This is the second request in as many months. Please see Ticket 178931, the problem was not addressed. Why is the light at Hammond Middle School still functioning? I was advised that the light, at Hammond Middle School, was erected so that buses could get in/out of the school [See Existing Comments for complete initial description.]

182808	TES_CMPL TSTRTS	06/27/2019 04:42	Complete Streets Requests	TES_TRAN SPLN	Dear Mayor Wilson, Vice Mayor Bennett-Parker, and the City Council, I am a new resident of the City of Alexandria, but I have been working in Alexandria for over 12 years. As an avid cyclist and now a bike commuter, the Seminary Road repaving plan and Complete Streets project are very important to me since I use Seminary road on my commute. I have been doing my best to become involved in the process so that my voice is heard on such a [See Existing Comments for complete initial description.]
182978	TES_CMPL TSTRTS	07/1/2019 06:58	Complete Streets Requests	TES_TRAN SPLN	ustin,Just punt on this for now.The biggest reason you shouldn't reduce the current 4 lanes hasn't even really been discussed. In 12 months, you're going to have MacArthur families going up and down Seminary to get to Patrick Henry...add many more buses, cars, etc and you are asking for a disaster if we shrink that down to fewer lanes.
183458	STRTPOTH LERPR	07/7/2019 09:43	Streets - Potholes	TES_STMAI NT	Where is it located? "In the road"Is it impacting traffic flow? "YES"Please describe the location "Seminary Lower interchange"The entire Seminary Rd I-395 lower interchange has gotten really bad with pot holes and cracks on all four sides. When is the city going to re-work this bridge area? this has been deteriorating for several years and needs to be address.Thank you for your attention to this interchange.
183433	SGNHITDW NLNG	07/7/2019 11:21	Signs - Hit/Down/Leaning Traffic Sign	TES_TRAF FIC_OPS	What type of sign is it? "Other"Please describe the sign "Way Finding sign"7.7.19I need to report that the way finding sign on Seminary Rd. at N. Ivanhoe St. was mowed down by some vehicle.I would like a report on this accident if police were called. Were there any people injured? What time did this crash occur? Reason for crash?Flying signs can kill pedestrians walking on the sidewalk.It looks like excessive speed might b [See Existing Comments for complete initial description.]
184170	STCLNLITTI LLEGAL	07/13/2019 02:24	Litter - Illegal Dumping	TES_STCL EAN	What is the nature of your complaint? "Trash on Seminary Road Pedestrian Bridge"How often is trash cleaned from the Seminary Road pedestrian bridge and when is the next cleaning scheduled? I had failed to submit my request in sooner, but I used the bridge on June 27 and was dismayed to see trash and leaves that seemed to be blown into the corners along the length the bridge. Considering much of the product packaging seemed faded and t [See Existing Comments for complete initial description.]
184183	ADDSTREE TLIGHT	07/13/2019 08:18	Street Light - New or Upgraded Request	TES_TRAF FIC_OPS	What type of light is it? "Commercial Right of Way - Additional Street Light "Reason for the Request: "Roadway Navigability/Line-of-Sight "Other reasons: "There are no light fixtures on Seminary Road on the North Side of busy street from Columbia Pike to Firehouse after Kenmore St. Also all North Side light fixtures if present on street, bulbs are not functioning at all"There are NO overhead street lights on the North Side of Se [See Existing Comments for complete initial description.]
184411	STRTPOTH LERPR	07/16/2019 11:38	Streets - Potholes	TES_STMAI NT	Where is it located? "In the road"Is it impacting traffic flow? "YES"Please describe the location "DUKE STREET NEAR LANDMARK & SEMINARY ROAD RAMPS FROM 395"The roads on Duke Street around Landmark from Beauregard and S. Walker Street and the ramps from 395 to Seminary Road are filled with potholes that are always just patched up. Not long after, they open up again. This is dangerous as drivers swerve to avoid this potholes, not to [See Existing Comments for complete initial description.]
184664	TES_CMPL TSTRTS	07/18/2019 03:18	Complete Streets Requests	TES_TRAN SPLN	RE: Council will decide in September whether to follow the recommendation of the Traffic and Parking Board to keep Seminary Road four lanes, with the addition of 2 pedestrian HAWK crosswalks.If you support keeping Seminary Road four lanes and not adding to the city's gridlock and cut through traffic, contact The Mayor, Vice Mayor and City Council members at call-click-connect at <a href="https://www.alexandriava.gov/ContactUs">https://www.alexandriava.gov/ContactUs</a> or by phone at 7 [See Existing Comments for complete initial description.]
184834	STRTPOTH LERPR	07/19/2019 07:29	Streets - Potholes	TES_STMAI NT	Where is it located? "In the road"Is it impacting traffic flow? "YES"Please describe the location "they are on kenmore ave on the north side of the third speed bump as you travel from seminary to van dorn street"potholes by the north side of the speed bump on Kenmore (the bump closest to Van Dorn )
184890	TES_CMPL TSTRTS	07/22/2019 07:09	Complete Streets Requests	TES_TRAN SPLN	As an individual that uses this road frequently, has had to reroute work related activities because of your King Street changes and as a small business owner paying a significant amount of taxes to the City I strongly disagree with attempts to reduce the number of lanes on Seminary road. It is absurd to think that adding bike lanes while increasing stalled traffic which emits ozone forming pollution is a suitable answer particularly with the weather we have. If you want bike lanes find a way t
185323	TES_CMPL TSTRTS	07/25/2019 05:17	Complete Streets Requests	TES_TRAN SPLN	Please direct the T&ES Director to implement a three-lane solution for Seminary Road to provide safe accommodations for all road users consistent with City plans and policies. I ask that you reject the Traffic and Parking Boards recommendation for four lanes on Seminary Road, and ask that you direct a three-lane alternative that prioritizes safety, is consistent with City plans and policies, and objectively best meets project goals and ob [See Existing Comments for complete initial description.]
185412	TES_CMPL TSTRTS	07/25/2019 06:28	Complete Streets Requests	TES_TRAN SPLN	Dear Mayor, Vice-Mayor and Council,Please support changes to Seminary Road from four to three lanes. A three-lane option with center left-turn lanes is consistent with City of Alexandria plans and policies; a four-lane solution is not. For example, the changes on King Street between TC Williams and Janney's Lane are consistent with current City plans and policies, as well as what future generations want. The King Street changes crea [See Existing Comments for complete initial description.]
185735	TES_CMPL TSTRTS	07/28/2019 10:43	Complete Streets Requests	TES_TRAN SPLN	Mayor Wilson, Vice Mayor Bennett-Parker and Council Members: I am writing to urge you to move forward with the three-lane (Alternative 3) plan for Seminary Road. This option is safest for motorists, bicyclists and pedestrians. As you know, a similar project on King Street in 2016 has made the area around TC Williams much safer and has not resulted in the worsened congestion that opponents predicted. If motorists are obeying the exi [See Existing Comments for complete initial description.]



186084	TES_CMPL TSTRTS	07/30/2019 11:07	Complete Streets Requests	TES_TRAN SPLN	Resending a plain-text version of my earlier Call.Click.Connect. request #186072, due to problems with the attachment. Thanks. =====Mayor Wilson, Vice Mayor Bennett-Parker, and members of Council,I am writing as Vice Chair of the Alexandria Bicycle and Pedestrian Advisory Committee (BPAC) to correct misinformation that was recently provided to you and to summarize relev [See Existing Comments for complete initial description.]
--------	--------------------	------------------	------------------------------	------------------	---