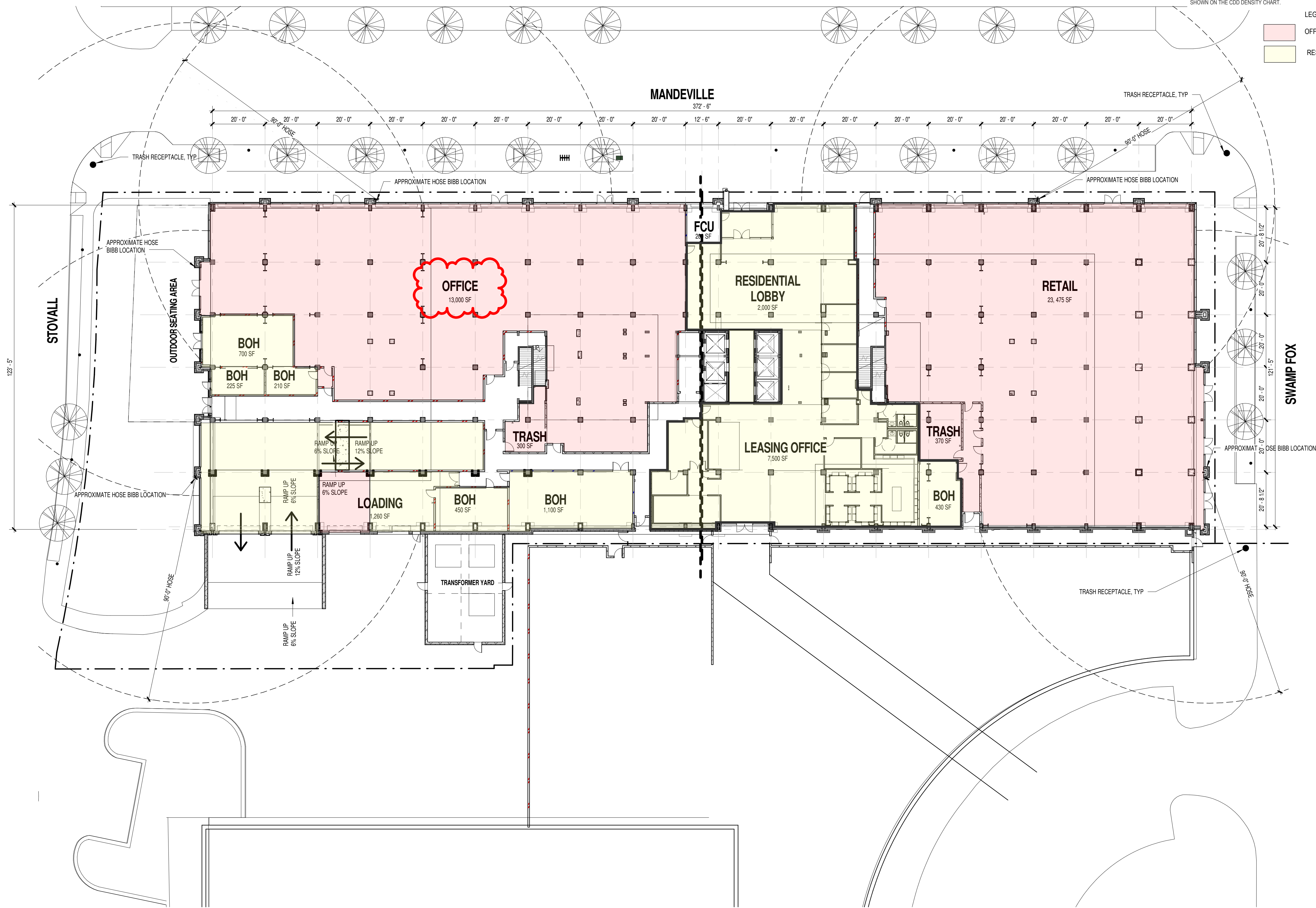


PROJECT NUMBER: 20170012 PROJECT NAME: 200 Stovall Street Conversion
SHEET NUMBER: -A1.03 - LEVEL 1 - PLAN
P:\2017\20170012\2-d-7 drawings\20170012_2015_stovall_hleinbach.rvt
5/16/2019 3:45:19 PM



1 LEVEL 1
-A1.03 SCALE: 1" = 20'-0"

PARKING MATRIX						
	STANDARD	TANDEM	COMPACT	ADA	ADA VAN	TOTAL
LEVEL 2	36	8	3		2	49
LEVEL 3	95	1	3	3		102
LEVEL 4	94	2	4	3		103
TOTAL	225	11	10	6	2	254

GENERAL NOTES:
1. NO CHANGE TO PARKING PROPOSED FOR BLOCK 6A UNDER THIS DSUP AMENDMENT.
2. WITH THIS DSUP AMENDMENT, PROPOSED OFFICE USE CAN BE CONVERTED TO RETAIL AS SHOWN ON THE CDD DENSITY CHART.

LEGEND:
OFFICE/RETAIL USE
RESIDENTIAL USE

COOPER CARRY
THE CENTER FOR CONNECTIVE ARCHITECTURE

625 North Washington Street
Suite 200
Alexandria, VA 22314
(703) 519-6152
coopercarry.com

ATLANTA NEW YORK WASHINGTON

© 2018 COOPER CARRY

SCOPE DOCUMENTS

The Contract Documents issued are intended to be at that level of completion and as such, may be neither complete nor coordinated. The Contractor and Design/Builder is responsible for complete and coordinated pricing and execution of the Work, and shall include items necessary for the proper execution and completion of the Work, as shown, specified, reasonably inferred or required for a complete Project. For Work of delegated designs, systems, assemblies, components and materials shall comply with national, state and local code requirements. The Contractor and Design/Builder shall inform the Owner and Architect, in timely fashion, of any discovered omissions, inconsistencies or errors in the Contract Documents.

ISSUANCES

No.	Drawing Issue Description	Date
A	SITE PLAN ADDENDUM	12/15/2017
	SITE PLANNING	05/10/2018
B	SITE PLANNING REVISION	01/18/2019
C	SITE PLANNING REVISION	05/10/2019

200 Stovall Street Conversion

Alexandria, VA 22332

PERSEUS . TDC

LEVEL 1 - PLAN

STEPHEN SMITH
Principal in Charge
MATT GUELCHER
Project Manager
HEIDI LEINBACH
Project Architect
HEBA BELLA
Staff Architect

20170012
Project No.
05/16/19
Date

-A1.03

Drawing No.