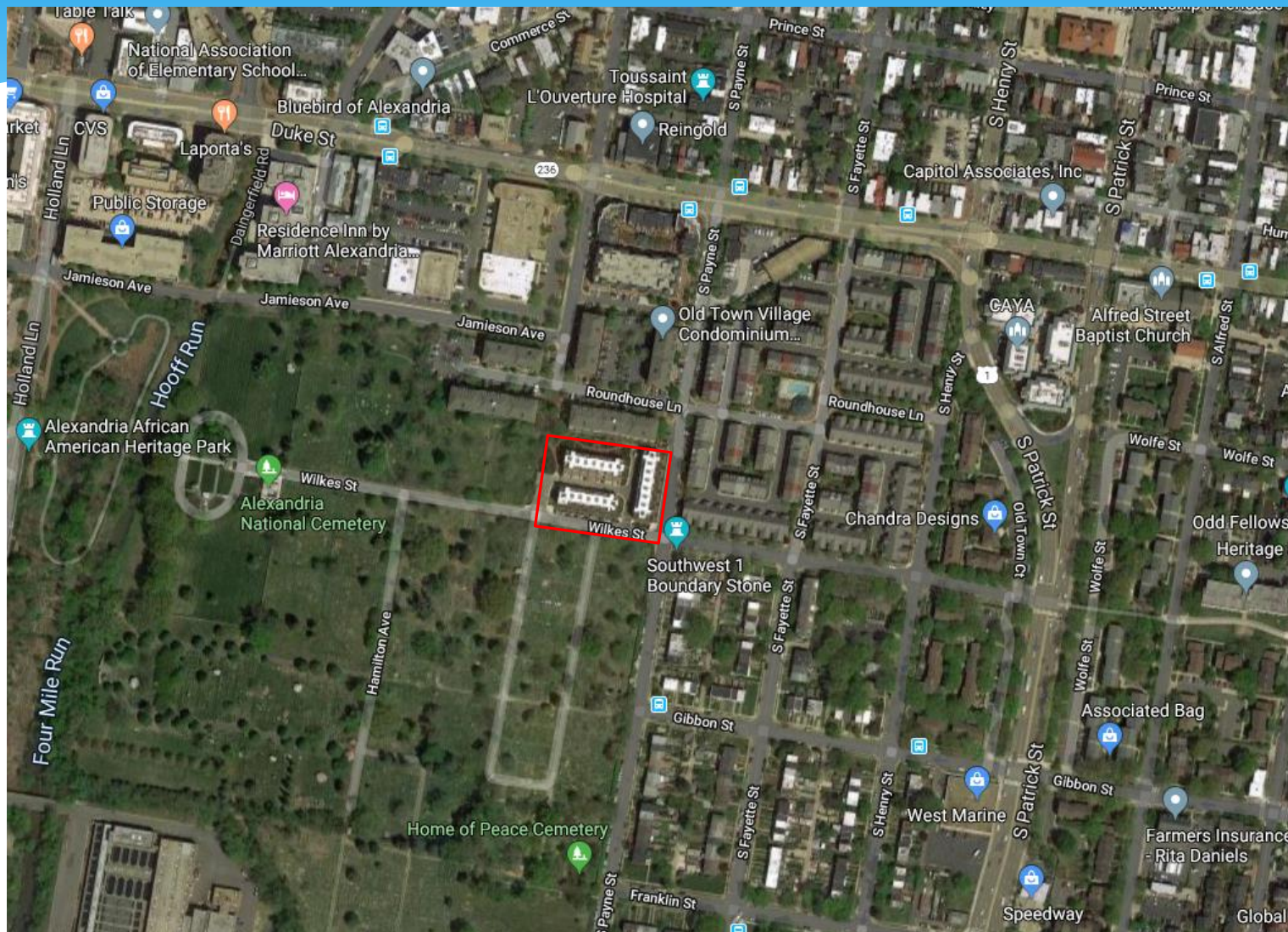


Expansion of Residential Permit Parking District 4

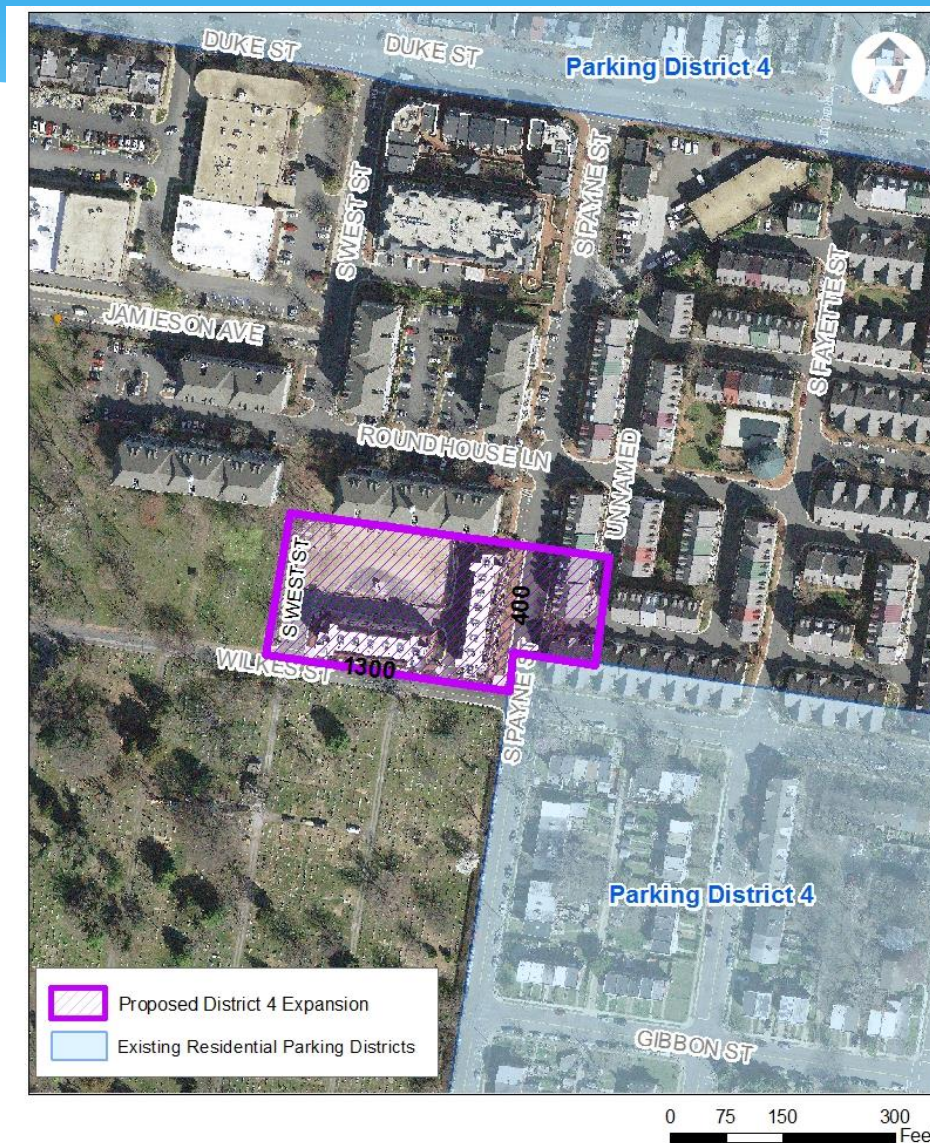
September 10, 2019



Location



Proposed District Expansion



Parking Occupancy Survey



Block	Number of Spaces	Number of Vehicles Parked	% occupied	% non-resident vehicles
400 Block S. Payne	8	6	75%	50%
1300 Block Wilkes	6	6	100%	50%
400 Block S. West	8	8	100%	38%

Staff Recommendation



- Approval of the resident petition and amendment of the Residential Permit Parking District Map to include the residential properties on the 400 block of S. Payne Street, the north side of the 1300 block of Wilkes Street, and the west side of the 400 block of S. West Street in Parking District 4.