

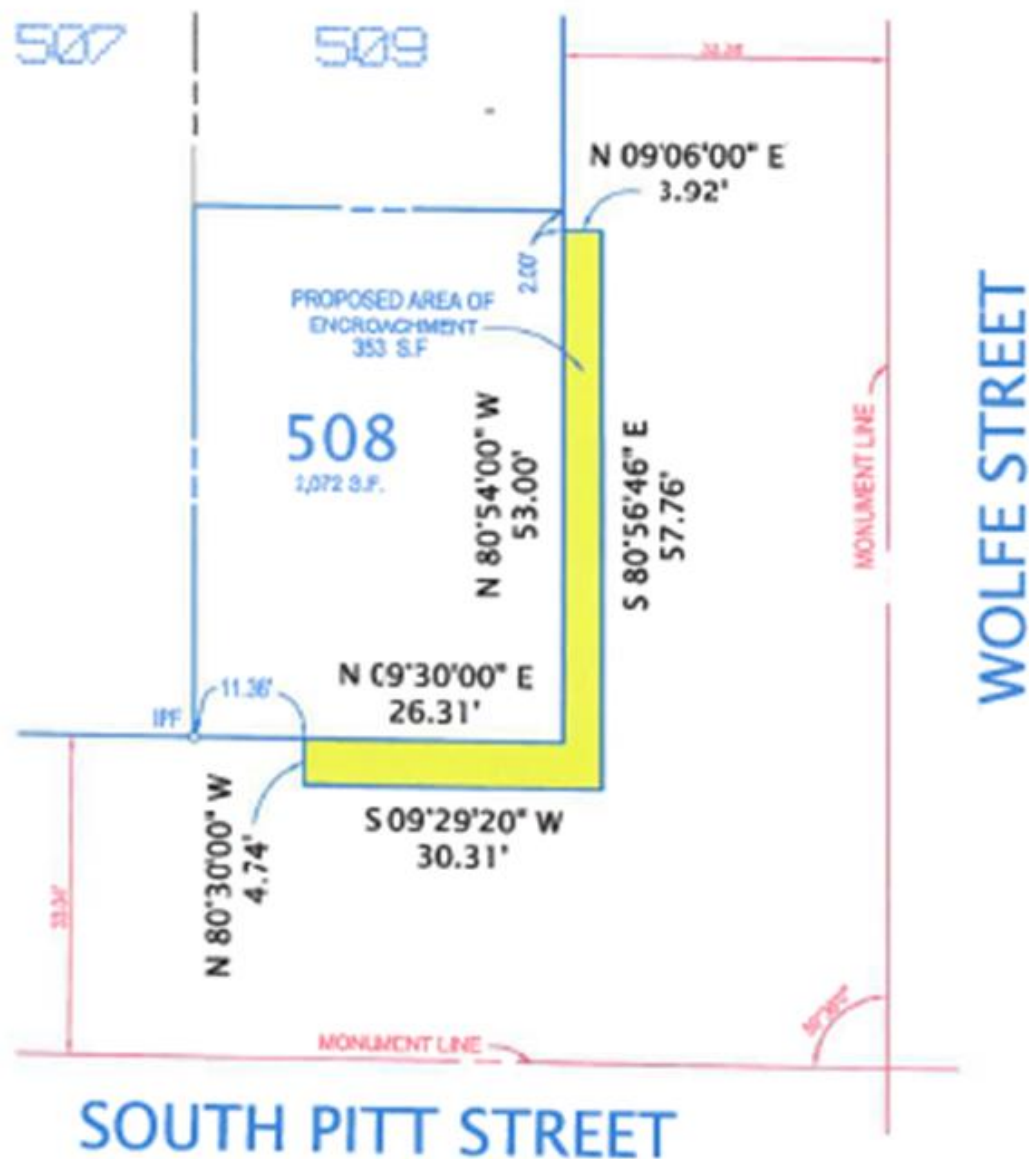


ENC#2019-00001

500 Wolfe Street

City Council
July 9, 2019


$$\begin{bmatrix} 2 \end{bmatrix}$$



Proposed encroachment for 353 square feet along South Pitt and Wolfe Streets.



PLANNING COMMISSION RECOMMENDS APPROVAL
with an amendment to Condition 3

Additional Information

