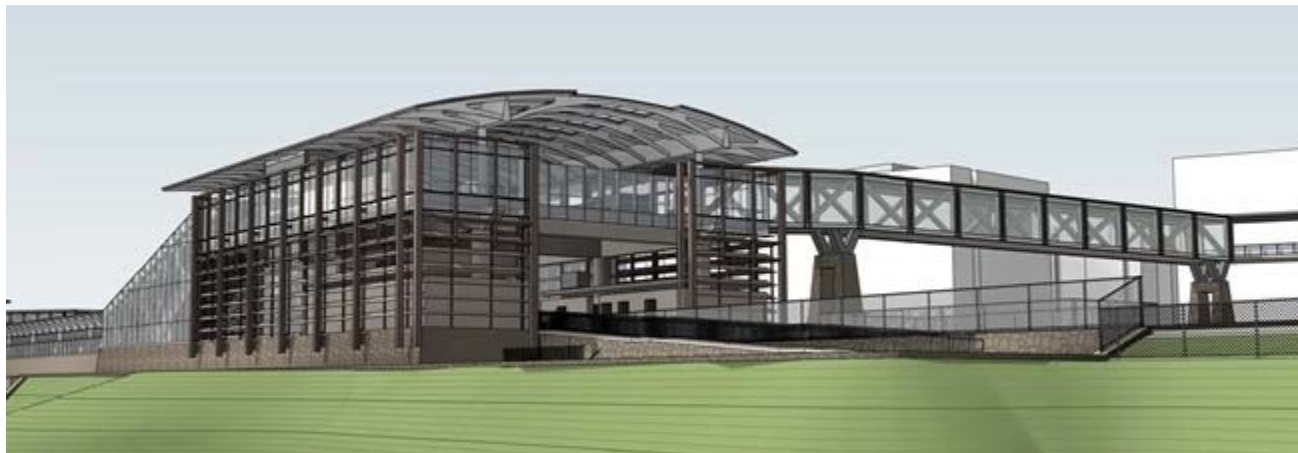


POTOMAC YARD METRORAIL STATION SOUTHWEST ACCESS OPTIONS

City Council Meeting
June 22, 2019



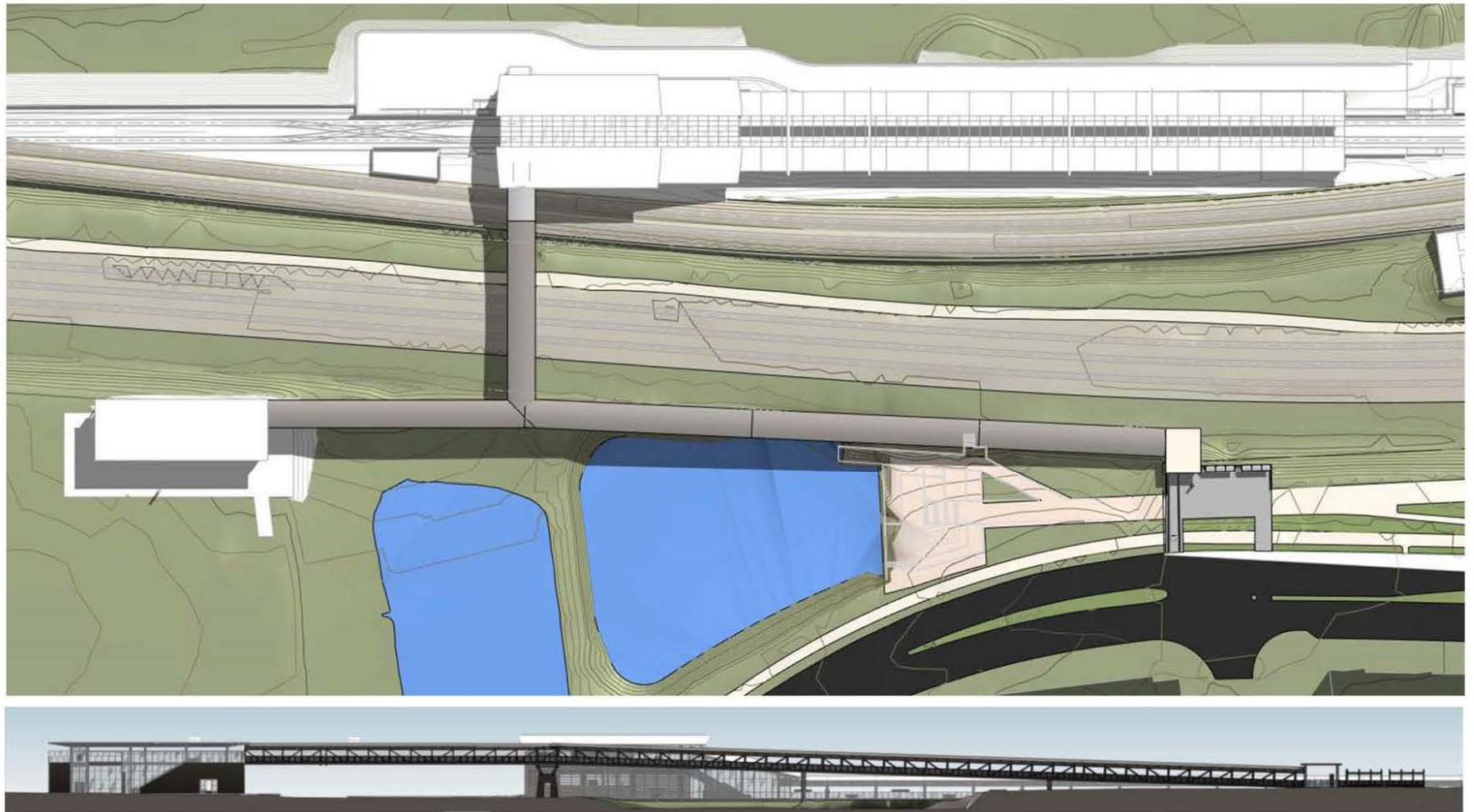
RECENT ACTIVITIES

- Council approved amended DSUP – December 2018
- \$50 million State funding for enhanced access from southwest (Amazon HQ2 incentive package)
- Three design ideas developed
- Pricing exercise:
 - Advanced engineering sufficiently to allow the performance of independent cost estimates for each of the 3 ideas



Council Approved DSUP

(with Ramp from E. Glebe Rd. to North Entrance)



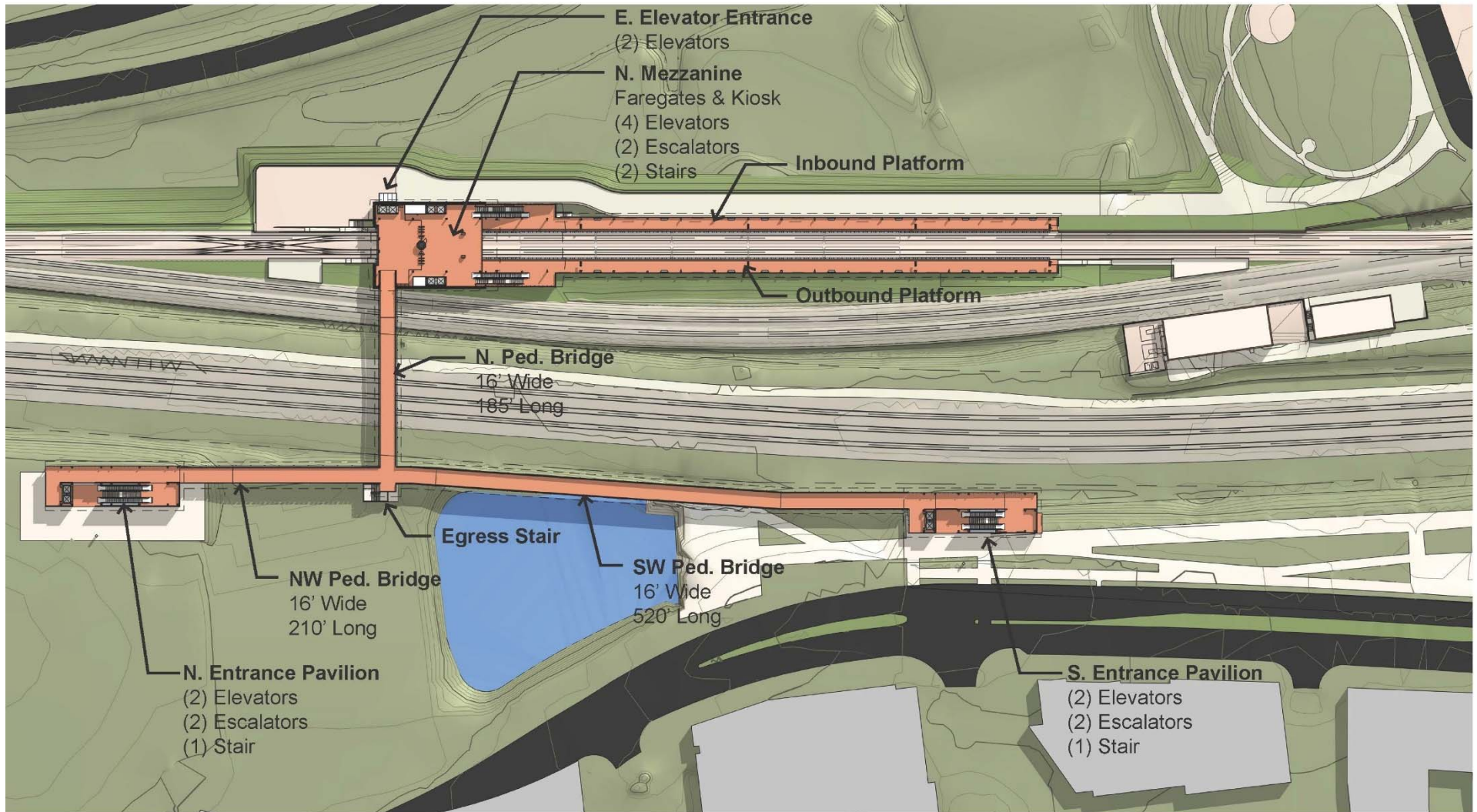
DSUP RAMP UPDATE

- Approved by City Council in December 2018
 - Included a pedestrian ramp from the north entrance extending down and to the south, landing at E. Glebe Road.
 - Estimated cost at time of approval was to be about \$15 million
- WMATA has developed an estimate for this ramp using similar price information provided for the design ideas
 - The estimated budget required for this ramp is \$25 million



SOUTH ENTRANCE DESIGN IDEA #1

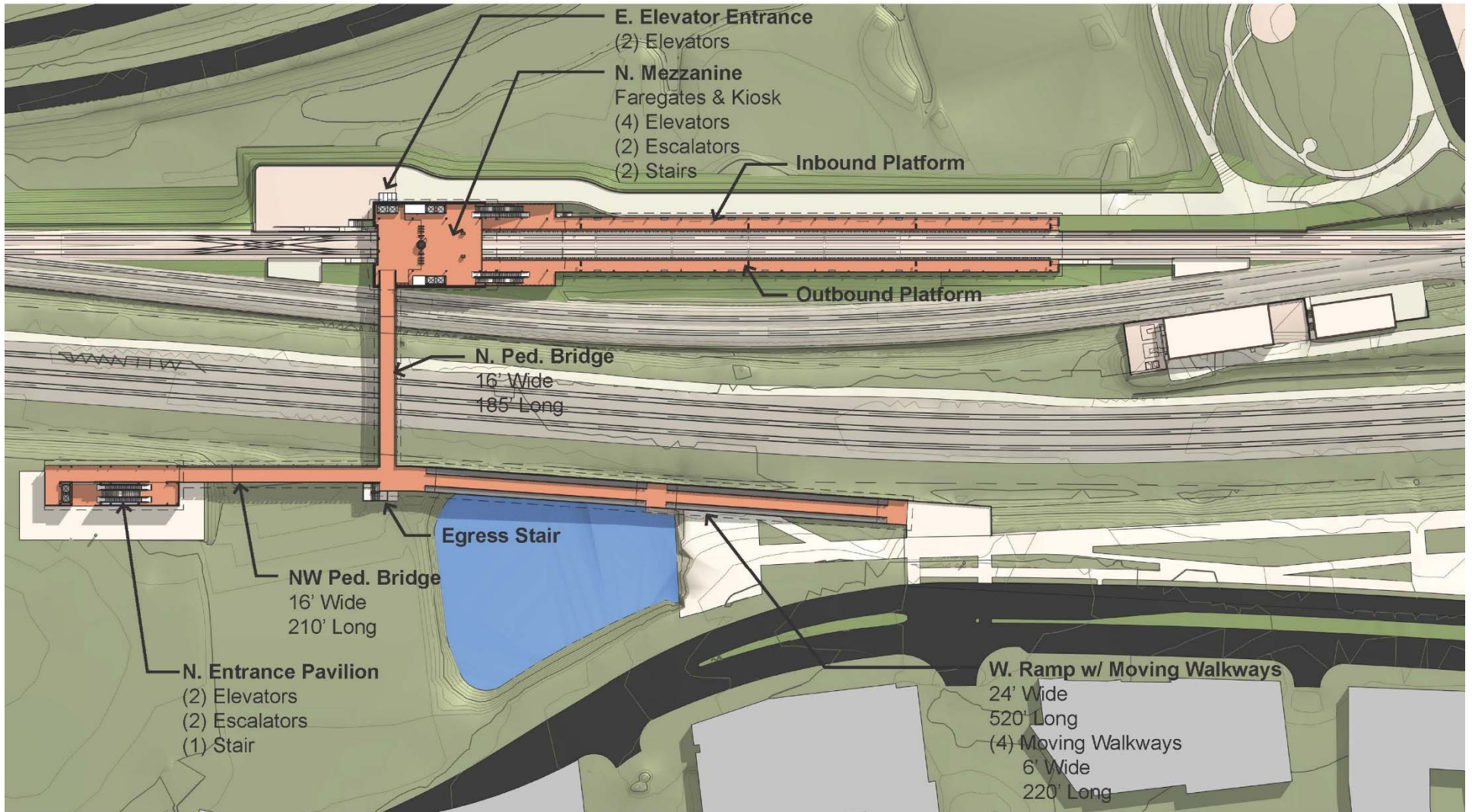
SOUTH ENTRANCE PAVILION W/ BRIDGE





SOUTH ENTRANCE DESIGN IDEA #2

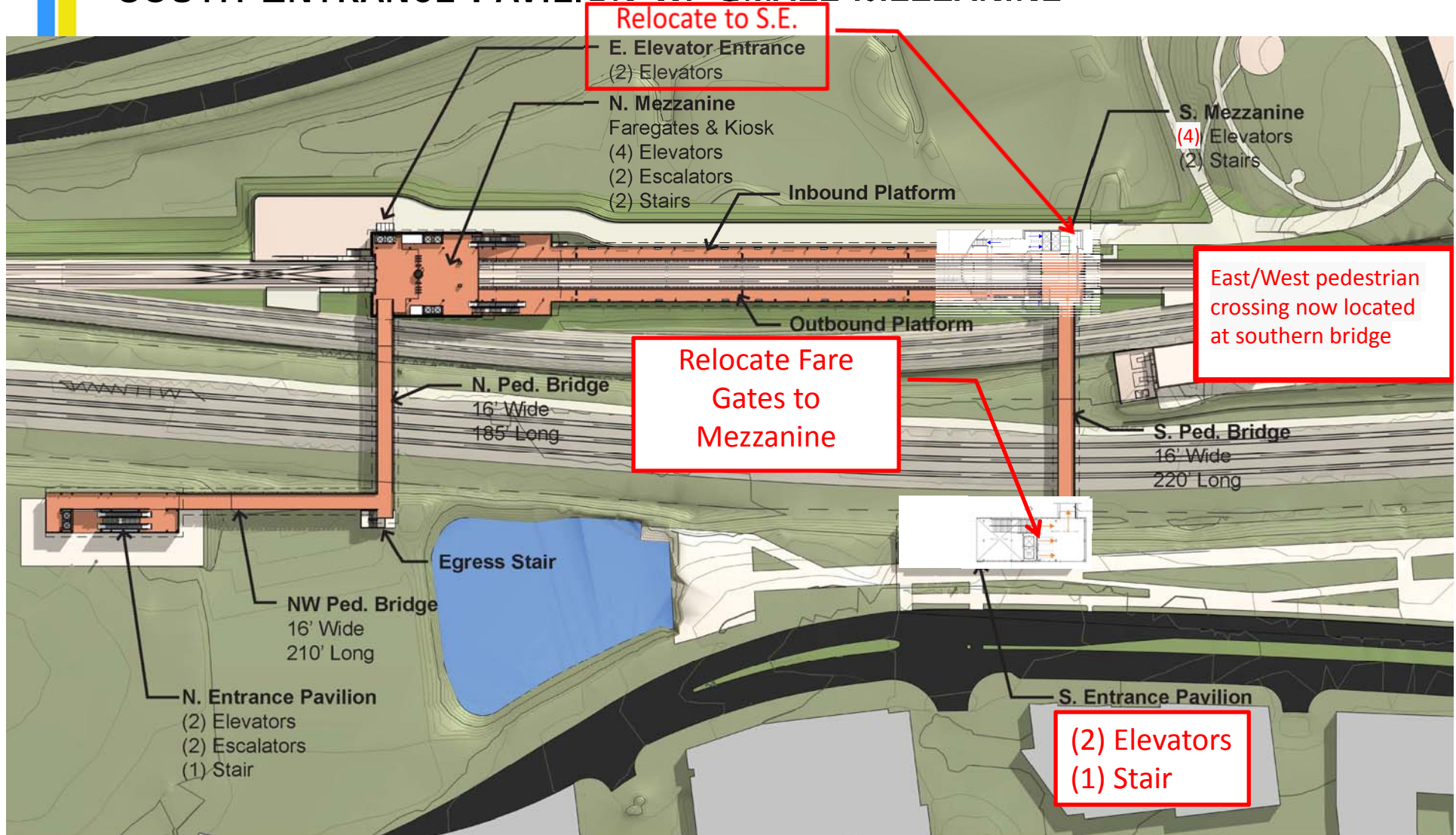
E. GLEBE RAMP W/ MOVING WALKWAY





SOUTH ENTRANCE DESIGN IDEA #3-PYC PROPOSAL

SOUTH ENTRANCE PAVILION W/ SMALL MEZZANINE



PRICING PROCESS UPDATE

- Pricing is preliminary and not intended to be final costs
- Estimated budget increase includes:
 - Allowances for items not included in the preliminary pricing
 - Construction contingencies
 - Project management/administration costs

Alternative Concept (\$ in millions)	Total Estimated Budget Increase
Idea # 1 (South Access Pavilion with Bridge to North Entrance)	\$75 m
Idea #2 (E. Glebe Ramp with Moving Walkway to North Entrance)	\$90 m
Idea #3 (Southwest Access Pavilion with Small Mezzanine)	\$100 m

COST IMPLICATIONS

POTOMAC YARD METRORAIL STATION SOUTHWEST ACCESS OPTIONS (\$ IN MILLIONS)				
	E. Glebe Ramp (DSUP)	Southwest Access Pavilion with Bridge to North Entrance (Idea #1)	E. Glebe Ramp with moving walkway to North Entrance (Idea #2)	Southwest Access Pavilion with small South Mezzanine (Idea #3)
Baseline Project Budget	\$320m	\$320m	\$320m	\$320m
Addl. Cost of Option	\$25m	\$75m	\$90m	\$100m
State Revenue Utilized	\$25m	\$50m	\$50m	\$50m
Addl. Cost to City	\$0	\$25m	\$40m	\$50m
Addl. Debt Service Impact	\$0	\$49m	\$78m	\$98m
Schedule Impact Delay	N/A	0 to 6 months	0 to 6 months	8 to 12 months

○ MODIFIED IDEA #1

- Estimated cost may be able to be reduced through further design refinement to bring the cost close to or within available funding:
 - Remove escalators
 - Reduce pavilion footprint
 - Reduce mechanical and electrical components



PUBLIC OUTREACH

- Memo to PYMIG - May 31
- Potomac Yard Civic Association - June 3
- Chamber of Commerce Government Relations Committee - June 4
- PYMIG - June 10th



RECOMMENDATION AND NEXT STEPS

- Further advance the design of Modified Idea #1
- Further develop pricing for E. Glebe Road ramp
- Bring refined pricing information to PYMIG and City Council in Fall 2019
- PYC will continue with design and construction of the Station in the approved DSUP plan



Discussion