



FY 2020 Long Range Planning Interdepartmental Work Program

Purpose

- Coordinate resources + work of departments
- Inform budget development
- Give community opportunity for feedback on long range planning work

Process

- Fall
 - Outreach + staff coordination
- Winter-Spring
 - January PC & CC review
 - Outreach, staff coordination
 - May PC/CC final work program



Updates to the draft Work Program (Jan)

- VA Tech Innovation Campus
- Zoning Text Amendments
 - Small Business Zoning
- Mount Vernon Avenue Plan Update
- Housing Affordability initiatives
- Mobility Initiatives
- Duke Street Area Plan
- Open Space Planning
- Implementation Initiatives



Mount Vernon Avenue Plans Update (Arlandria and Del Ray)

- September 2019 – April 2021
- Potential Topics
 - Housing Affordability
 - Business Districts
 - Pedestrian Safety
 - Historic Preservation
 - Redevelopment sites
 - Implementation
- Listening sessions Sept-Oct to inform final scope and community process framework



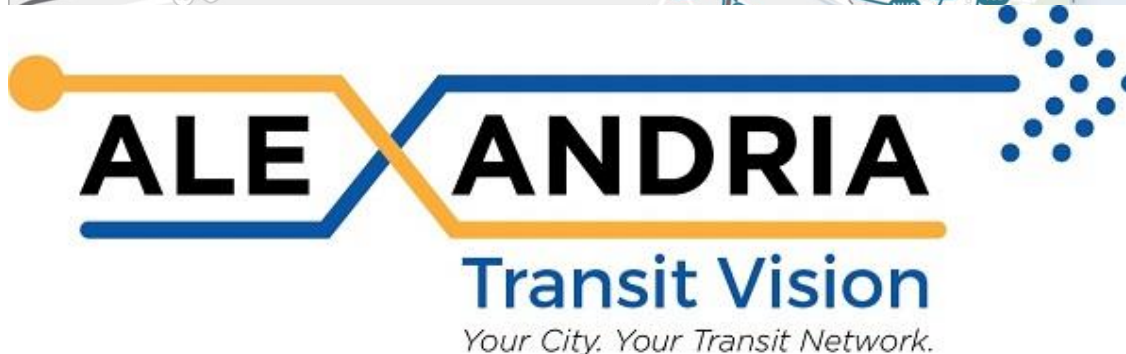
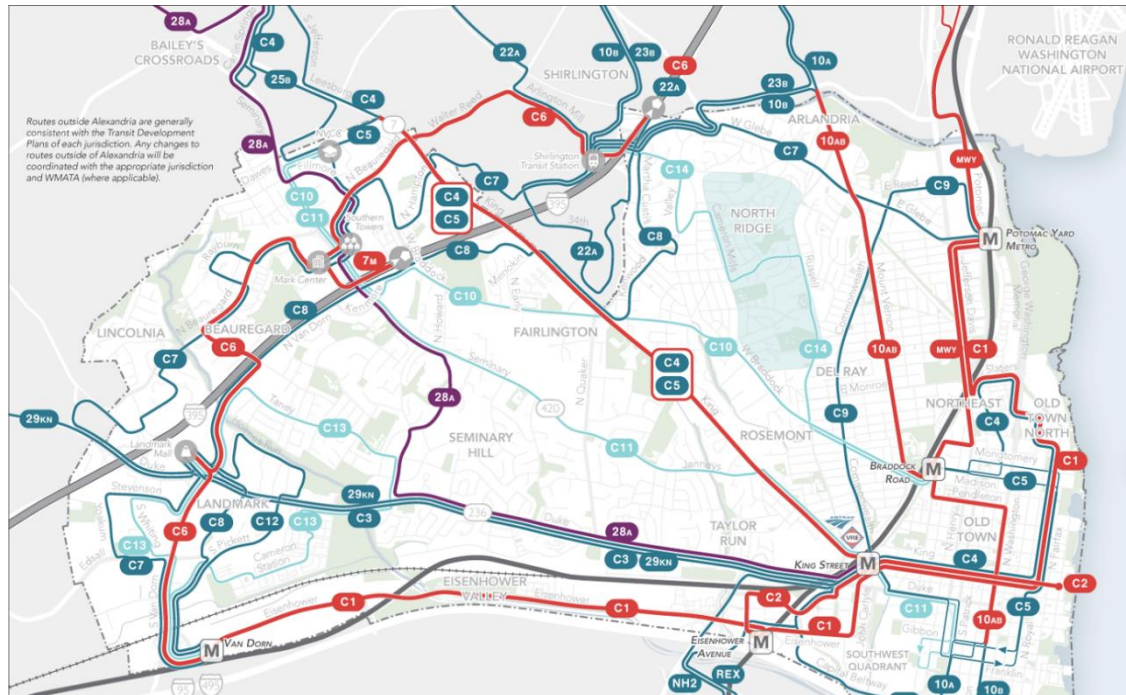
Housing Affordability

- Inclusionary Zoning Analysis Dec. 2019
- Housing Summit Jan. 2020
- Accessory Dwelling Unit Analysis June 2020



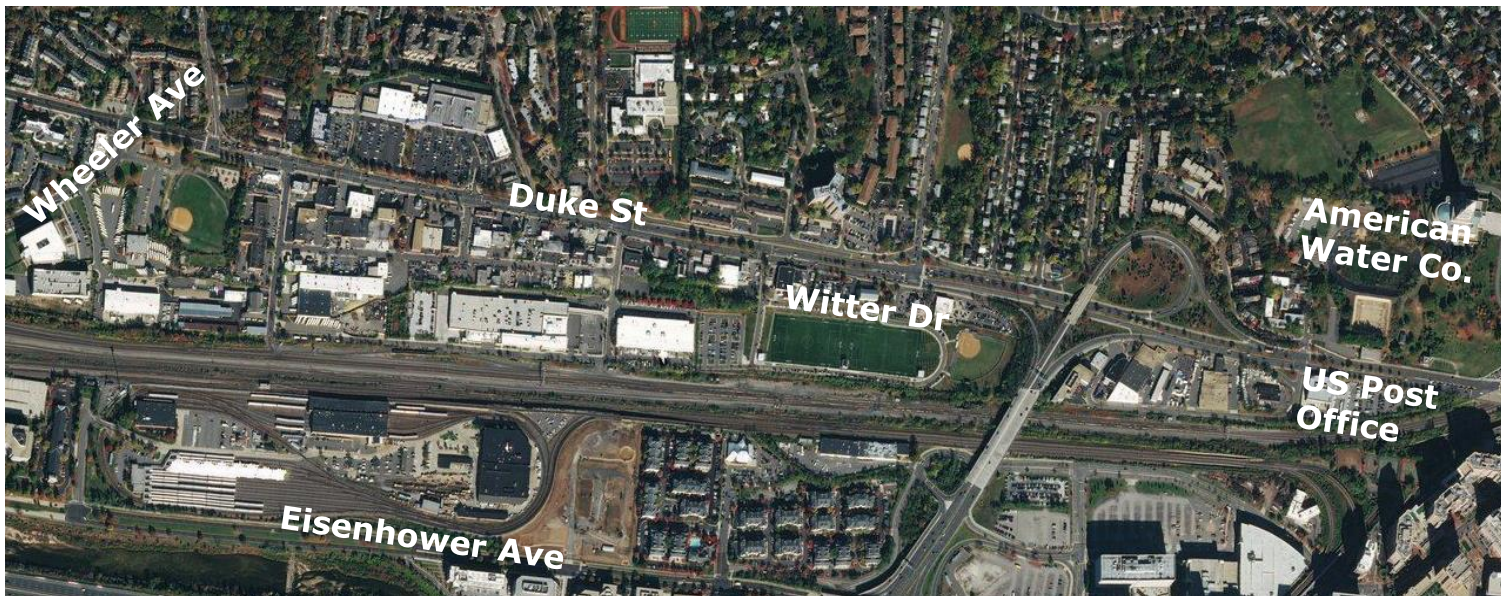
Mobility Initiatives

- Transit Vision Plan - to complete in Dec 2019



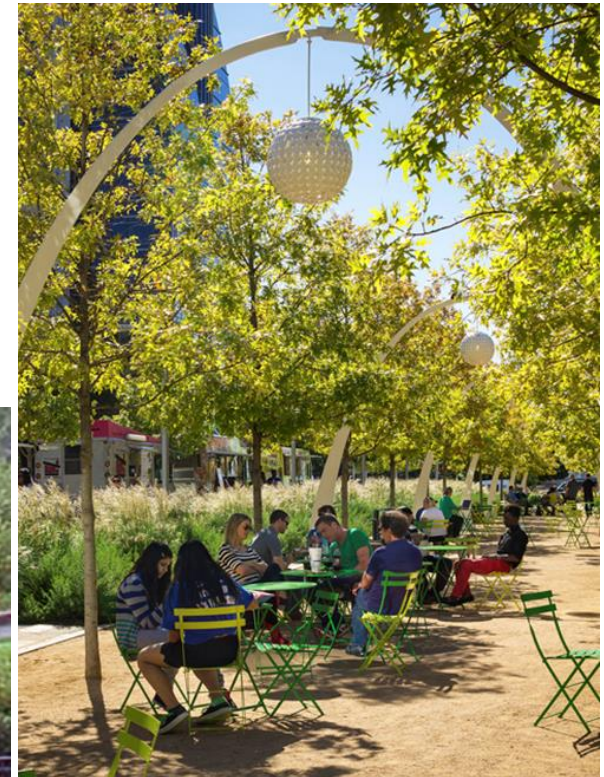
Duke Street area plan update

- March 2020 - June 2021
- Plan area boundaries TBD, will include ARHA's Cameron Valley site, as well as potential redevelopment sites
- Traffic analysis, coordination with Transit Corridor Planning, environmental studies



New Open Space Planning Initiatives

- Update to 2009 Urban Forestry Master Plan – end CY19
- Public Open Space Policy Plan – CY20
- Update to Parks & Recreation Master Plan – CY21-22



FY 2020 Work Program

[illegible]

FY 2020 Work Program (changes annotated)

	Calendar 2019					Calendar 2020						Calendar 2021												
CHANGES SINCE JAN PC AND CC SHOWN IN BOLD-BLUE	FY2020											FY2021												
MAJOR PROJECTS/PLANS	Jul	Aug	Sep	Oct	Nov	Dec	Jan	Feb	Ma	Apr	Ma	Jun	Jul	Aug	Sep	Oct	Nov	Dec	Jan	Feb	Ma	Apr	Ma	Jun
Eisenhower East Phase 2 Plan Update (PZ, TES, RPCA, AEDP, Housing)																								
Pocket Park Plan (RPCA, TES) completion date extended from Feb '19 to Oct																								
Small Cell Facilities Guidelines and Standards (CMO, IT, TES, PZ) completion date moved from Jan '20 to Oct																								
Urban Forestry Master Plan Update (RPCA, TES, PZ) new project																								
Transit Vision Study (TES, DASH, PZ) completion date extended from July to Dec																								
Oakville Triangle Plan update (PZ, TES, Housing, RPCA, AEDP) completion date extended from May to Dec																								
Alexandria Mobility Plan (formerly Transportation Master Plan) (TES, PZ, ITS) extended from Mar '20 to May																								
North Potomac Yard CDD (PZ, TES, Housing, RPCA) completion date extended from Dec '19 to May '20																								
Smart Mobility Initiative (TES, ITS, DASH, OEM, APD)																								
Sanitary Sewer Master Plan Update (TES, AlexRenew, DPI, RPCA, PZ)																								
Census 2020 Community Outreach (PZ, ITS, Housing, DHS)																								
Joint City Schools Facilities Master Plan (PZ, ACPS, GS, OMB, RPCA, Housing)																								
Mount Vernon Ave. Plans Update (PZ, TES, Housing, RPCA, AEDP) completion extended fr Oct '20 to Apr '21																								
Duke Street Transitway (Environmental Planning and Concept Design) (TES, PZ)																								
Duke Street Area Plan Update (PZ, TES, Housing, RPCA, AEDP) completion extended from Nov '20 to Jun '21																								
Public Open Space Policy Plan (RPCA, PZ, TES, DPI) new project																								
Dog Park Master Plan Update (RPCA, TES, DPI, P&Z)																								
Stream Valley and Trail Plan (RPCA, TES, PZ) (Funding dependent)																								
Waterfront History Implementation Plan (OHA, DPI, P&Z, RPCA, Visit Alexandria) project moved to FY21																								
Daingerfield Island Master Plan (NPS lead, PZ, TES, RPCA) (timing placeholder)																								
Parks and Recreation Master Plan Update (RPCA, PZ, TES) new project																								
STUDIES/POLICY INITIATIVES																								
Housing Contributions Review Work Group (Housing, P&Z) end moved from June to July																								
Chesapeake Bay 40% Total Maximum Daily Load (TMDL) Action Plan (TES, DPI, RPCA, GS, PZ)																								
RB Zoning - Parker-Gray (PZ) end moved from Sept to Nov																								
Inclusionary Zoning Policy Feasibility Analysis (P&Z, Housing) (Funding dependent)																								
Open Space in New Development (PZ, RPCA) completion extended from Dec '19 to June '20																								
Census, Forecasting and Demographics (PZ)																								
Electric Vehicle Charging Infrastructure Strategy (DGS, TES, P&Z, Code, DASH, ACPS) (new project)																								
C-PACE Program (DGS, Finance, AEDP, City Attorney, P&Z, Housing, TES, Code) new project																								
Accessory Dwelling Unit Feasibility Analysis (PZ, Housing) completion fr Dec19 to Jun20																								

Planning Commission Recommendation

By a vote of 7-0, Planning Commission recommended adoption of the FY 2020 Long Range Planning Interdepartmental Work Program.