



# **Episcopal High School | Hoxton Field 1200 N. Quaker Lane**

**Development Special Use Permit #2018-0019**

City Council  
May 18, 2019

# Project Location



EHS Hoxton Field

DSUP2018-0019





# Project Description

## Existing Conditions



EHS Hoxton Field

DSUP2018-0019



# Project Description

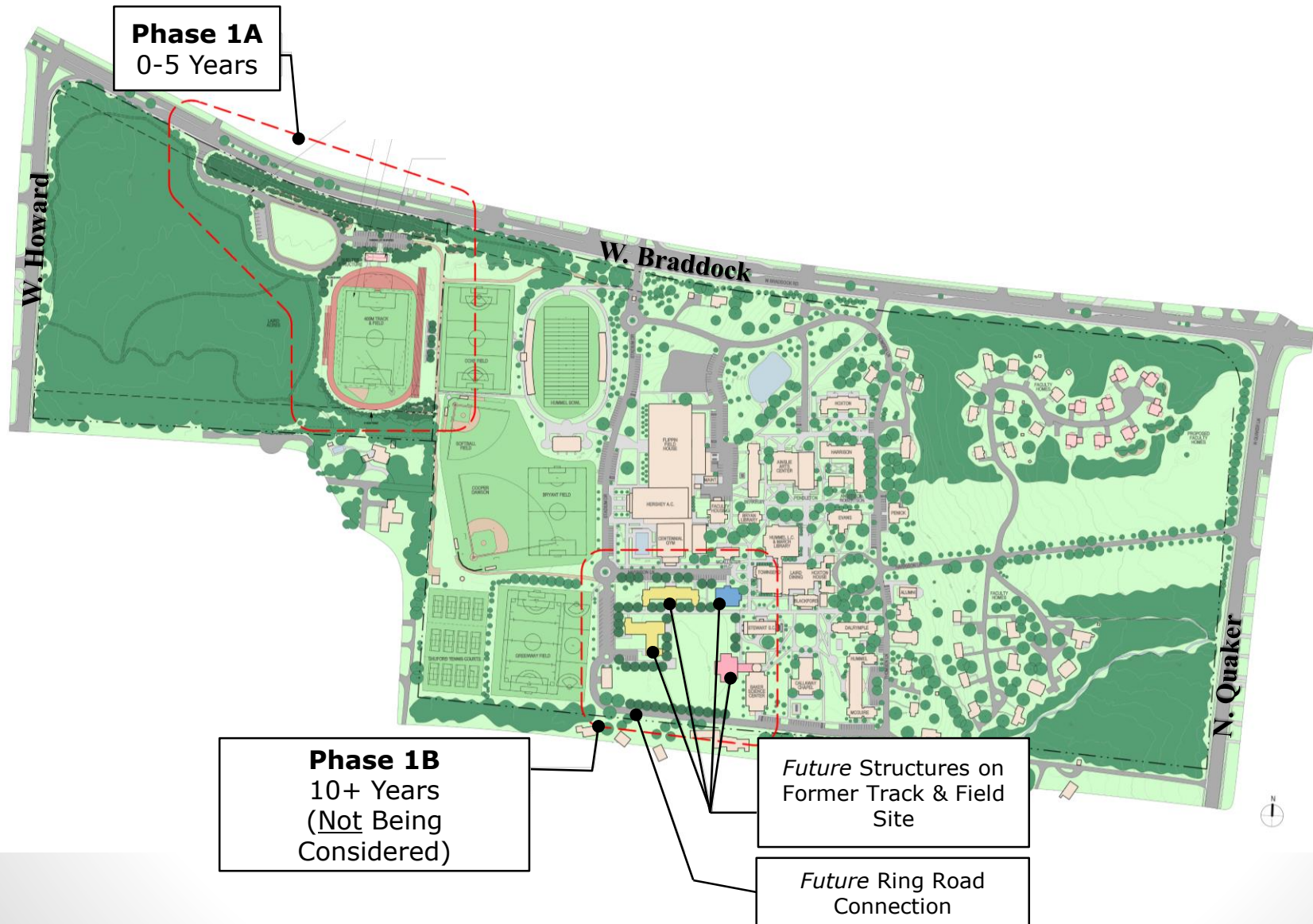
## Proposed Stadium and Related Amenities





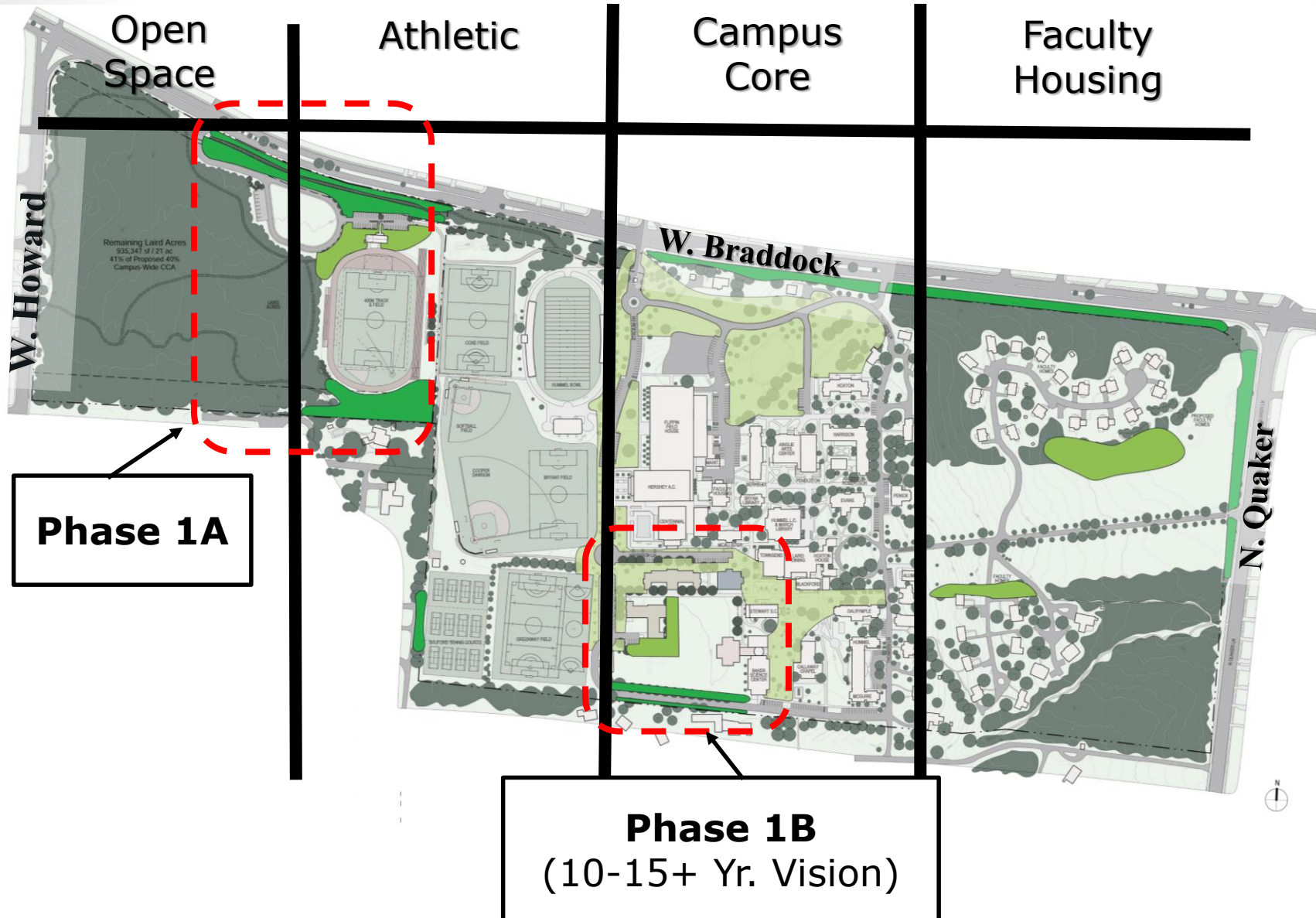
# Project Description

## Campus Long Range "Master Plan"



# Project Description

## Campus Long Range "Master Plan"





# Tree Reforestation



# Project Description

## Reforestation



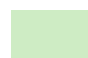


EHS Hoxton Field

DSUP2018-0019



**Legend**

-  Future Buffer Planting
-  Future Campus Planting
-  Current Campus Planting Program



71 Trees Additional Plantings  
88,750 SF  
(Approx. Size of New Field)

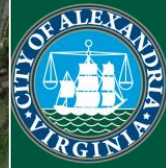
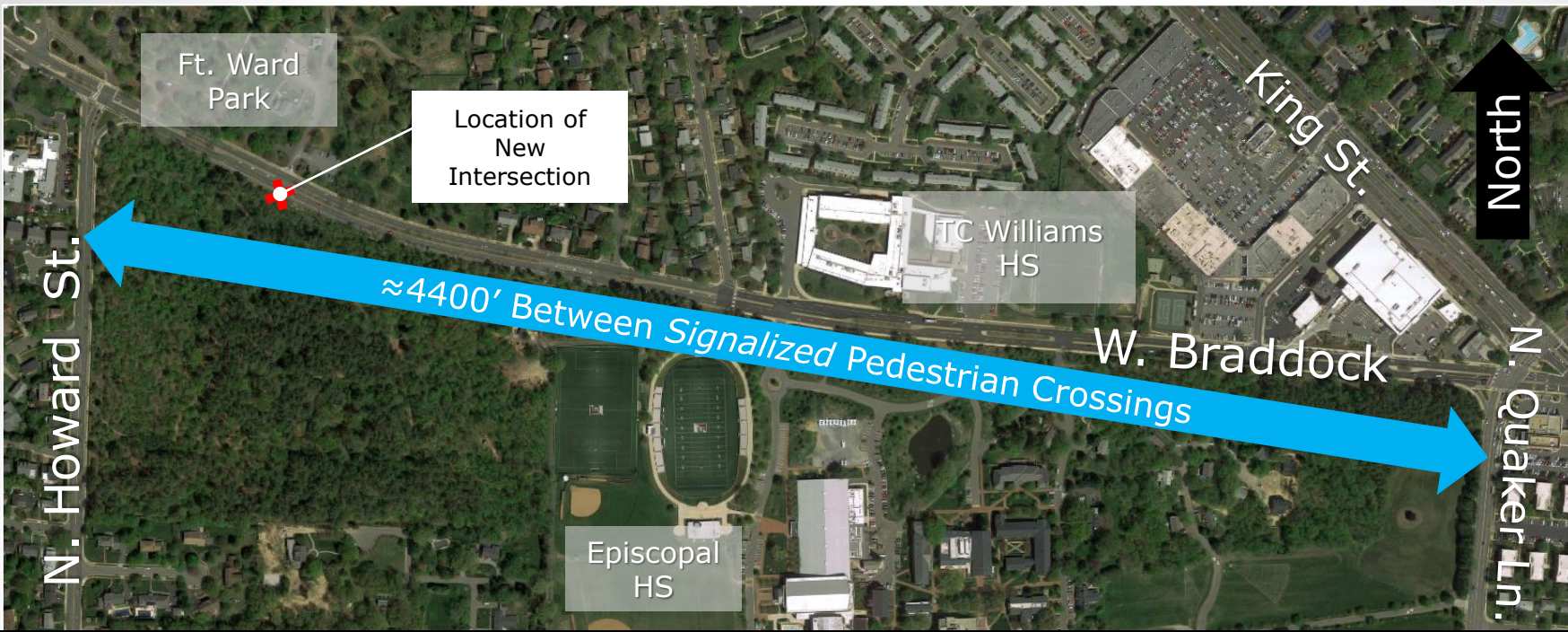
NTS\*

Shall Also Be Planted





# **Pedestrian Improvements (T&ES)**



EHS Hoxton Field

DSUP2018-0019



# King @ Melrose Alexandria, Va.

Source: Google



EHS Hoxton Field

DSUP2018-0019



High-Visibility  
Flashing Beacons &  
Crosswalks

Pedestrian  
Actuated  
Signal

Refuge

# Staff Recommendation

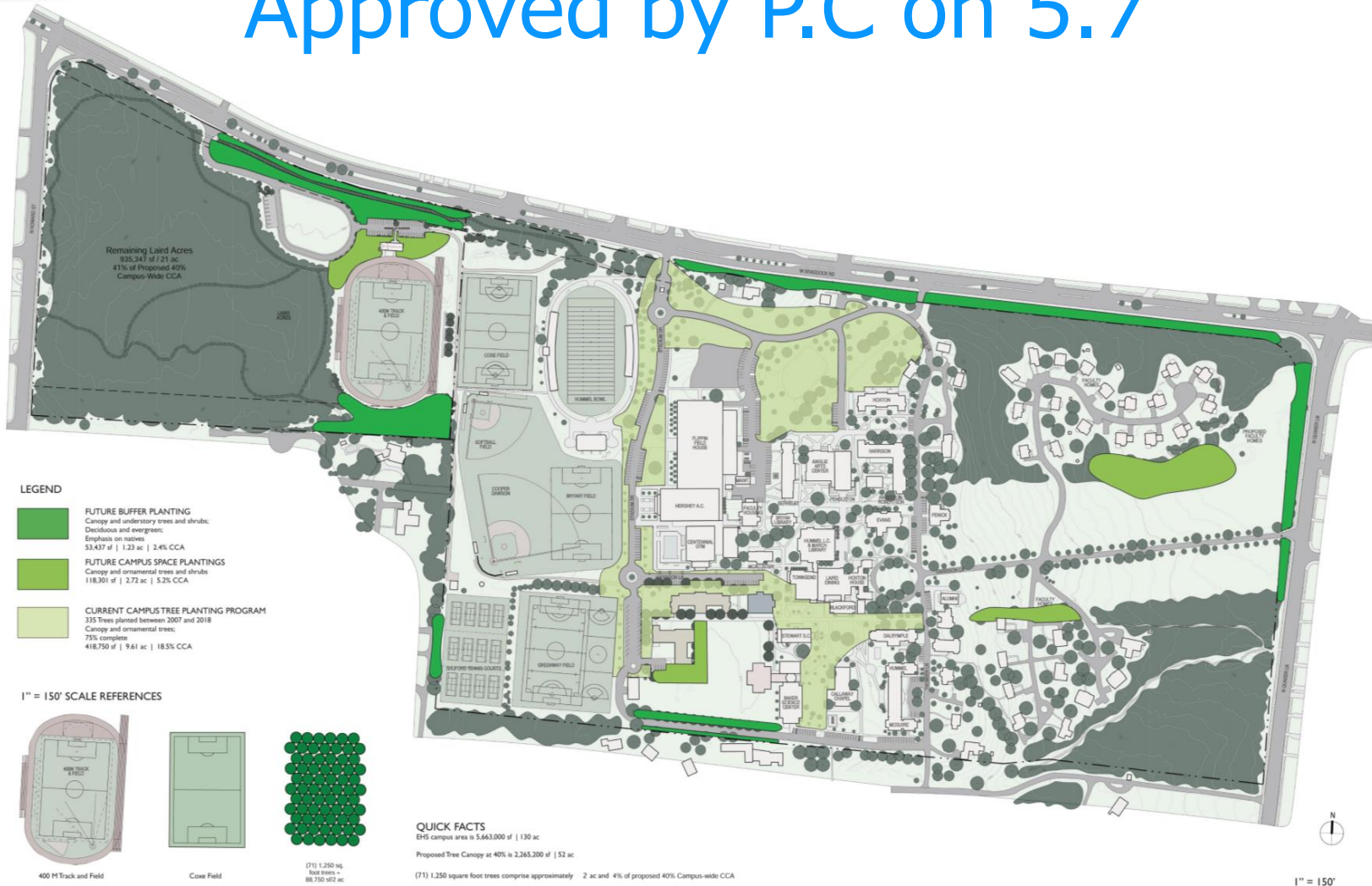
## Approve with Conditions

### Approved by P.C on 5.7



EHS Hoxton Field

DSUP2018-0019







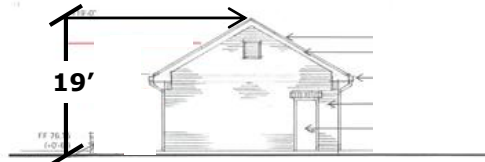
EHS Hoxton Field

DSUP2018-0019

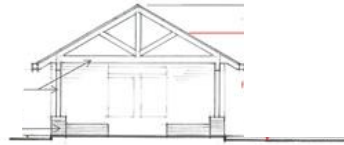


# Project Description

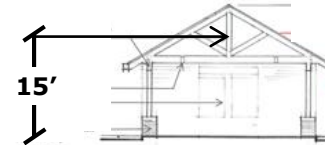
## Shelter Structure



**West Façade Elevation**



**East Façade Elevation**

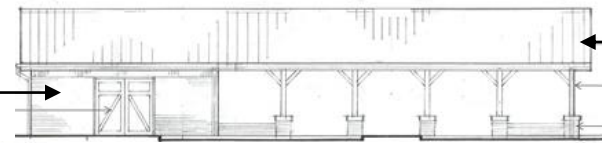


**Building Section**

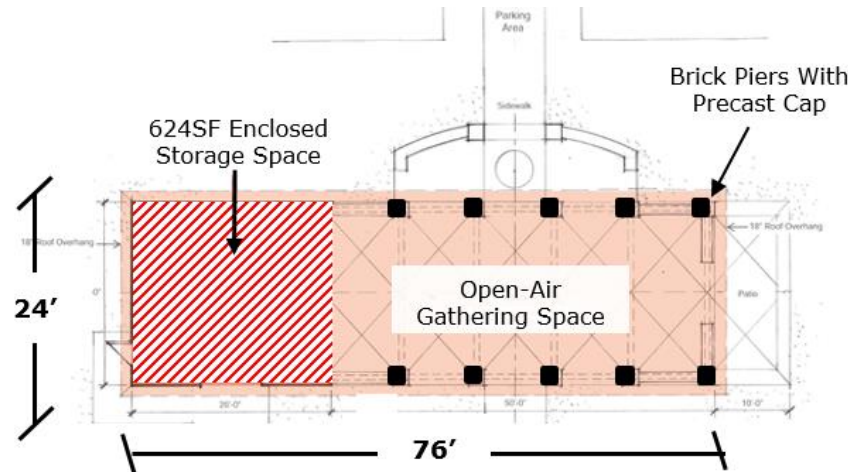


**North Façade Elevation**

Carriage  
Style  
Barn  
Door



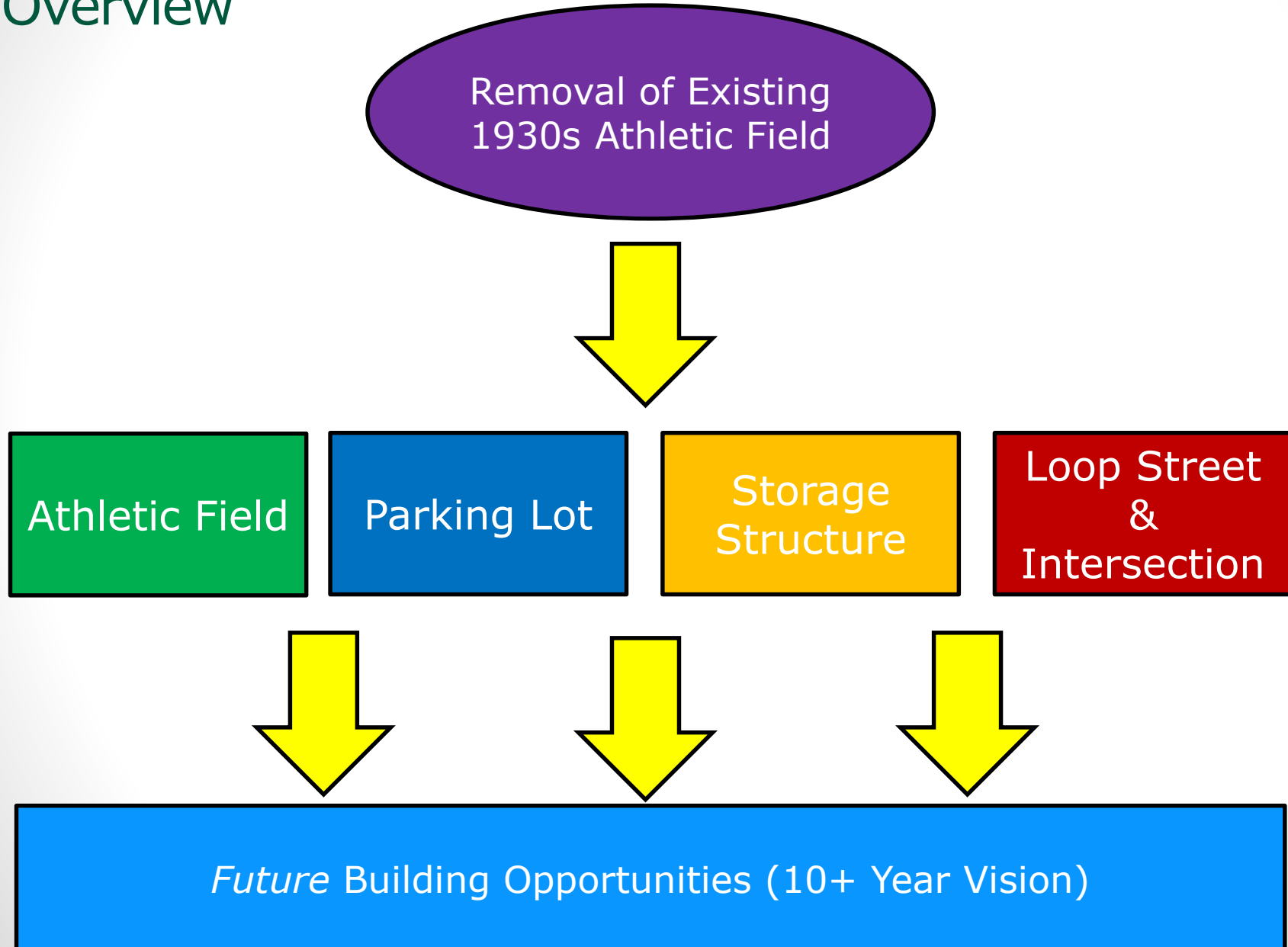
**South Façade Elevation**





# Project Description

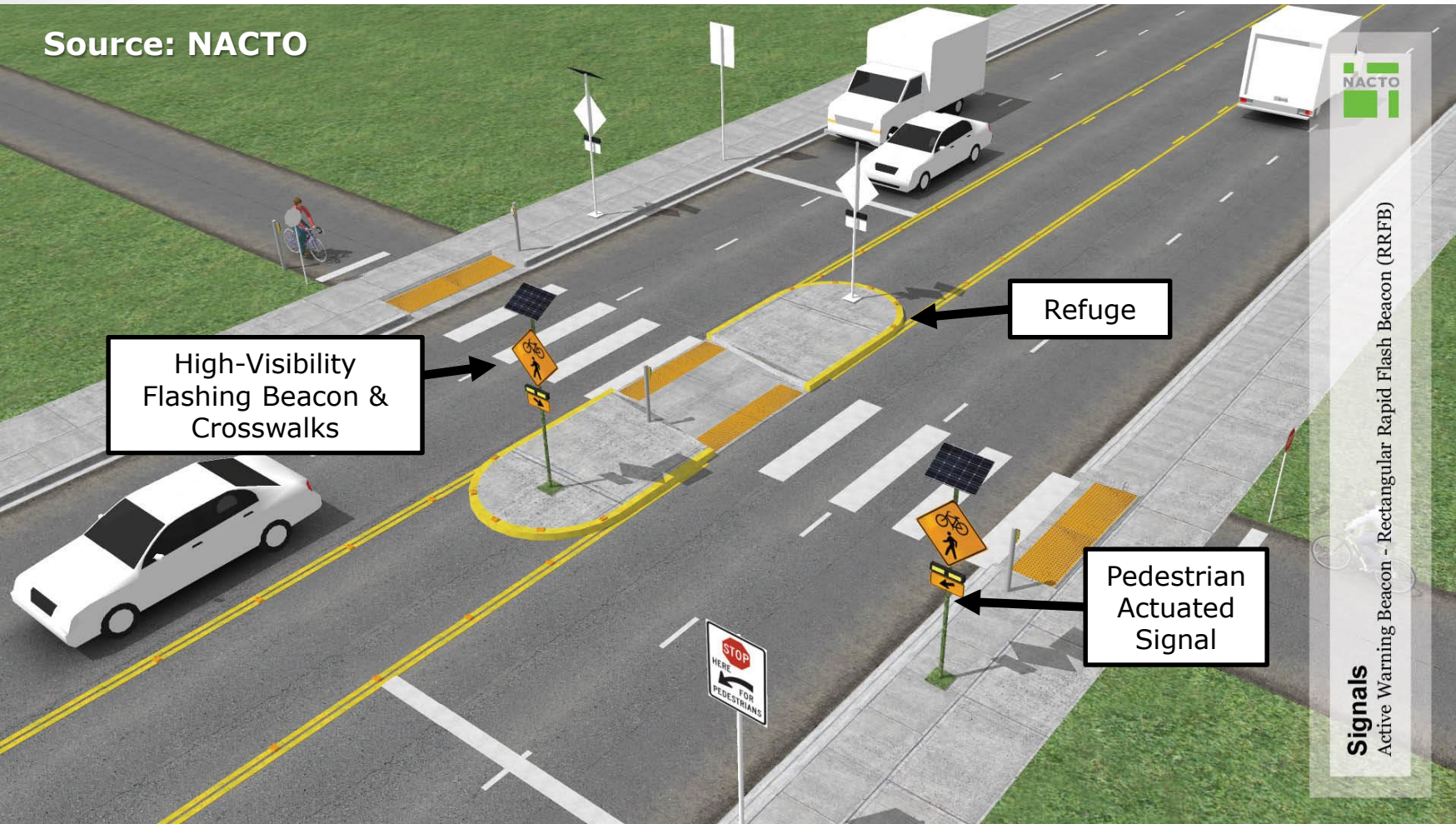
## Overview



# Flashing Rectangular Hybrid Beacon\*



Source: NACTO



EHS Hoxton Field

DSUP2018-0019