



COOPER CARRY
THE CENTER FOR CONNECTIVE ARCHITECTURE

625 North Washington Street
Suite 200
Alexandria, VA 22314
(703) 519-6152
coopercarry.com

©2018 COOPER CARRY

SCOPE DOCUMENTS

The Contract Documents Issued for [Conceptual Design, Schematic Design, Design Development, Partial Construction Documents or Other Issuance up to Issued for Construction] are intended to be at that level of development and as such, may be neither complete nor coordinated. The [Construction Manager, Contractor, Design/Builder] is responsible for complete and coordinated pricing [and execution] of the Work, and shall include items necessary for the proper execution and completion of the Work, as shown, specified, reasonably inferred or required for a complete Project. For Work of delegated designs: systems, assemblies, components and materials shall comply with national, state and local code requirements. The [Construction Manager, Contractor, Design/Builder] shall inform the Owner and Architect, in timely fashion, of any discovered omissions, inconsistencies or errors in the Contract Documents.

ISSUANCES

No.	Drawing Issue Description	Date
-----	---------------------------	------



HOFFMAN TOWN CENTER
BLOCKS 4 AND 5
RETAIL BASE

STONEBRIDGE CARRAS

ENCROACHMENTS PLAN

DK	20160037
Principal-in-Charge	Project No.
JG	01/15/19
Project Manager	Date
SJ	
Project Architect	
FR	
Staff Architect	

SK-14

NOT ISSUED FOR CONSTRUCTION

NOTE: ELEVATIONS ON CALLOUTS INDICATE HEIGHT ABOVE AVERAGE GRADE.

2
SK-14
STOVAL STREET
(VARIABLE WIDTH PUBLIC RIGHT-OF-WAY)

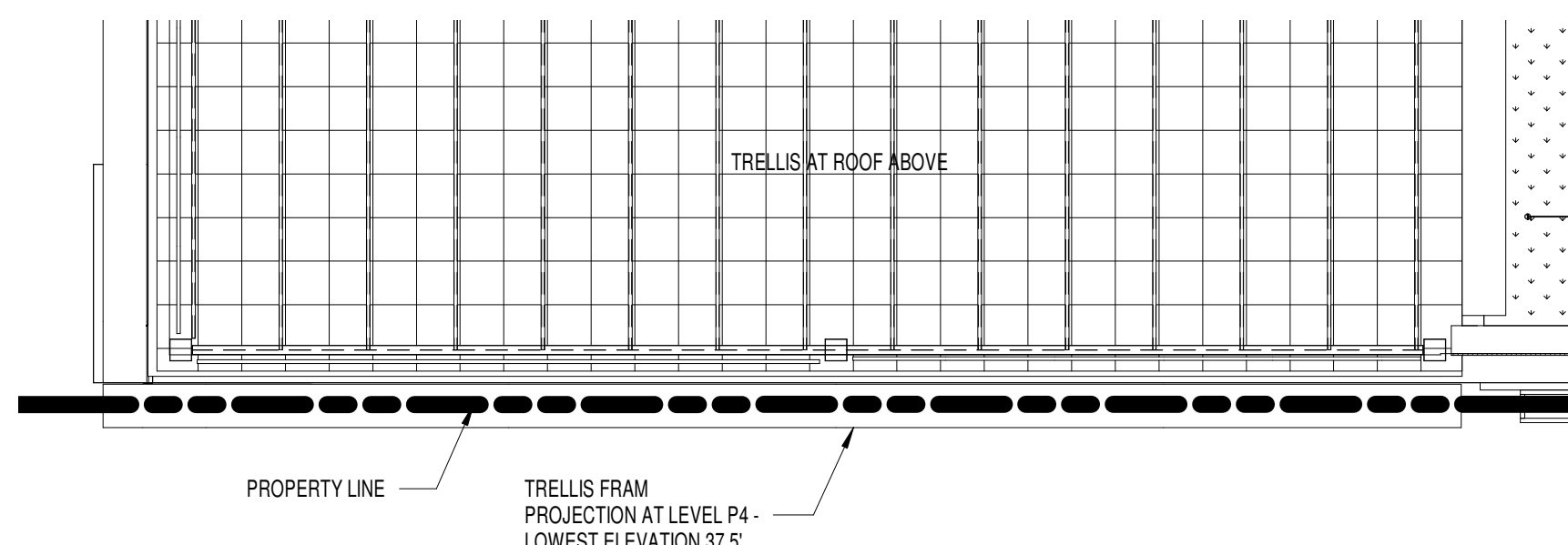
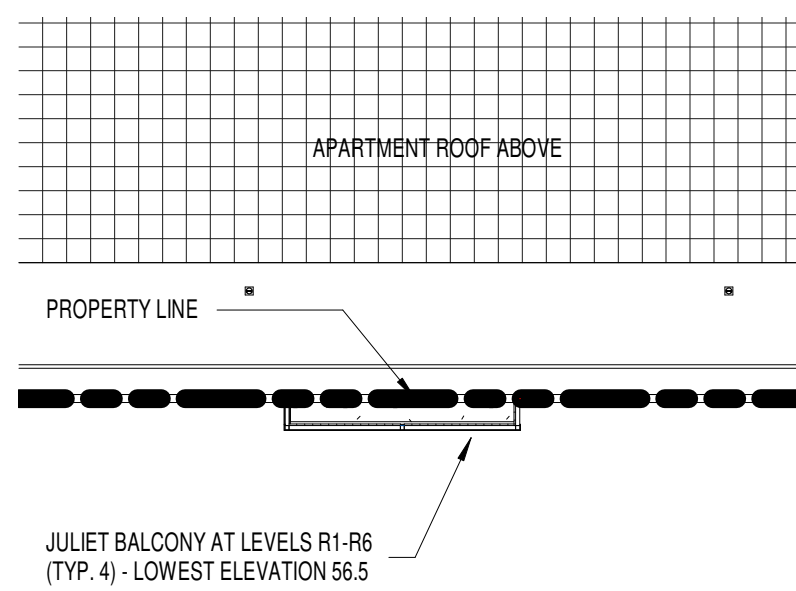
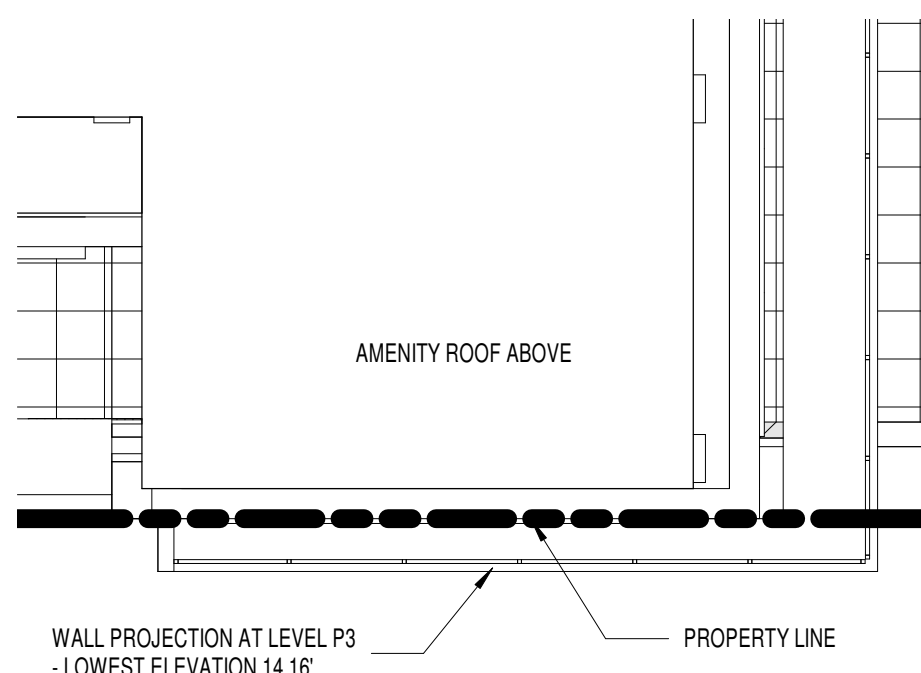
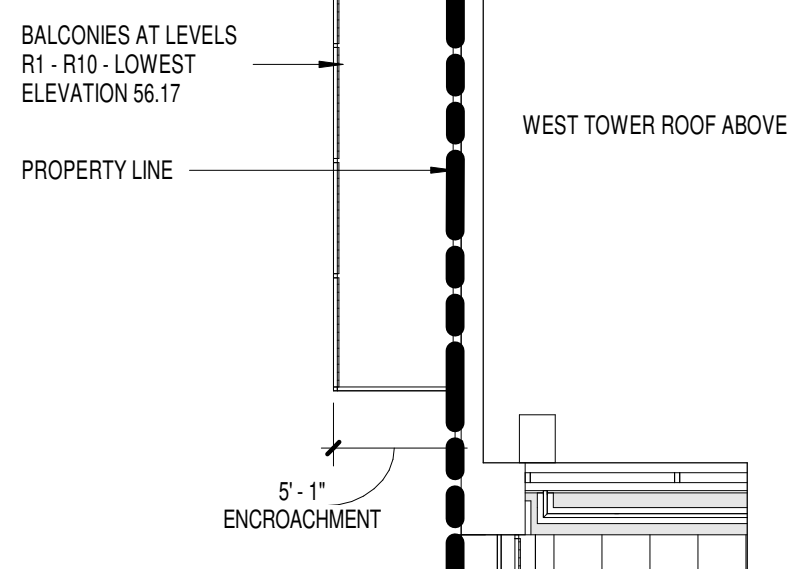
1
SK-14
ENCROACHMENTS DIAGRAM
SCALE: 1" = 30'-0"

2
SK-14
ENCROACHMENT - BALCONY
SCALE: 1/8" = 1'-0"

3
SK-14
ENCROACHMENT - WALL PROJECTION
SCALE: 1/8" = 1'-0"

4
SK-14
ENCROACHMENT - JULIET BALCONY
SCALE: 1/8" = 1'-0"

5
SK-14
ENCROACHMENT - PAVILION TRELLIS
SCALE: 1/8" = 1'-0"



PROJECT NUMBER: 20160037 PROJECT NAME: HOFFMAN TOWN CENTER BLOCKS 4 AND 5
SHEET NUMBER: SK-14 - ENCROACHMENTS PLAN
P:\2016\20160037\c-7 drawings\c-7-1 revit\users\Retail Base\20160037_2017_retail_base_Goebel02014.rvt
2/4/2019 1:58:56 PM