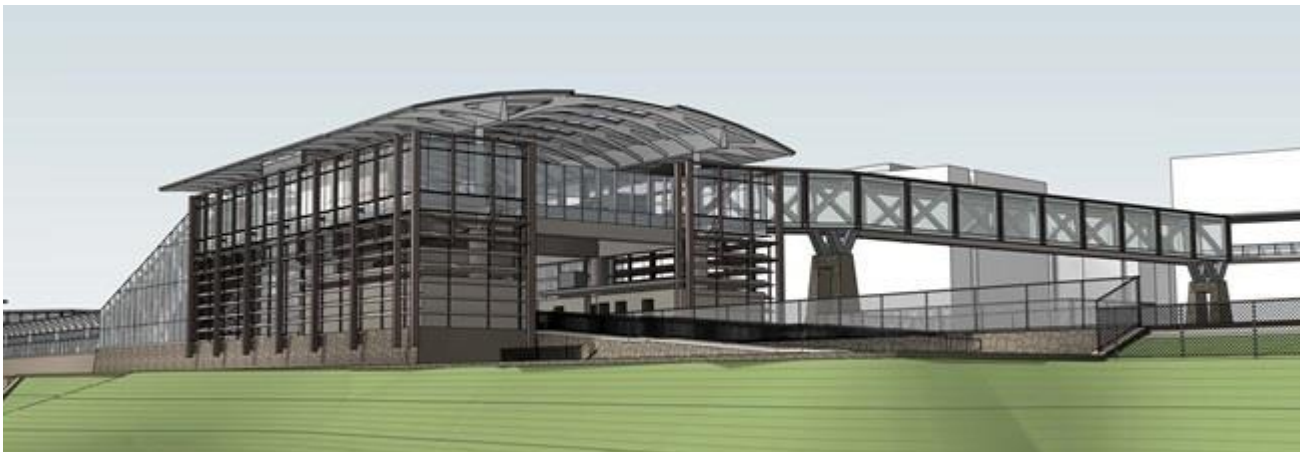


POTOMAC YARD METRORAIL STATION PROJECT

City Council Project Update

March 12, 2019



ONGOING ACTIVITIES

- Environmental permitting
- Community outreach
- South entrance

ENVIRONMENTAL PERMITTING

- Joint Permit Application (JPA)
 - Submitted on February 6th
 - Available to view on project website
 - Comment period
 - DEQ-hosted public hearing
 - Anticipate permit to be issued in summer 2019

COMMUNITY OUTREACH - RECENT AND UPCOMING MEETINGS

- PYMIG meetings
 - February 4
 - Environmental permitting updates
 - March 18
 - Construction updates
 - South entrance design process

SOUTH ENTRANCE

- Continue to coordinate with PYMIG and the community on the design process
- Contractor is preparing cost estimates for the three south entrance options presented at PYMIG



QUESTIONS?