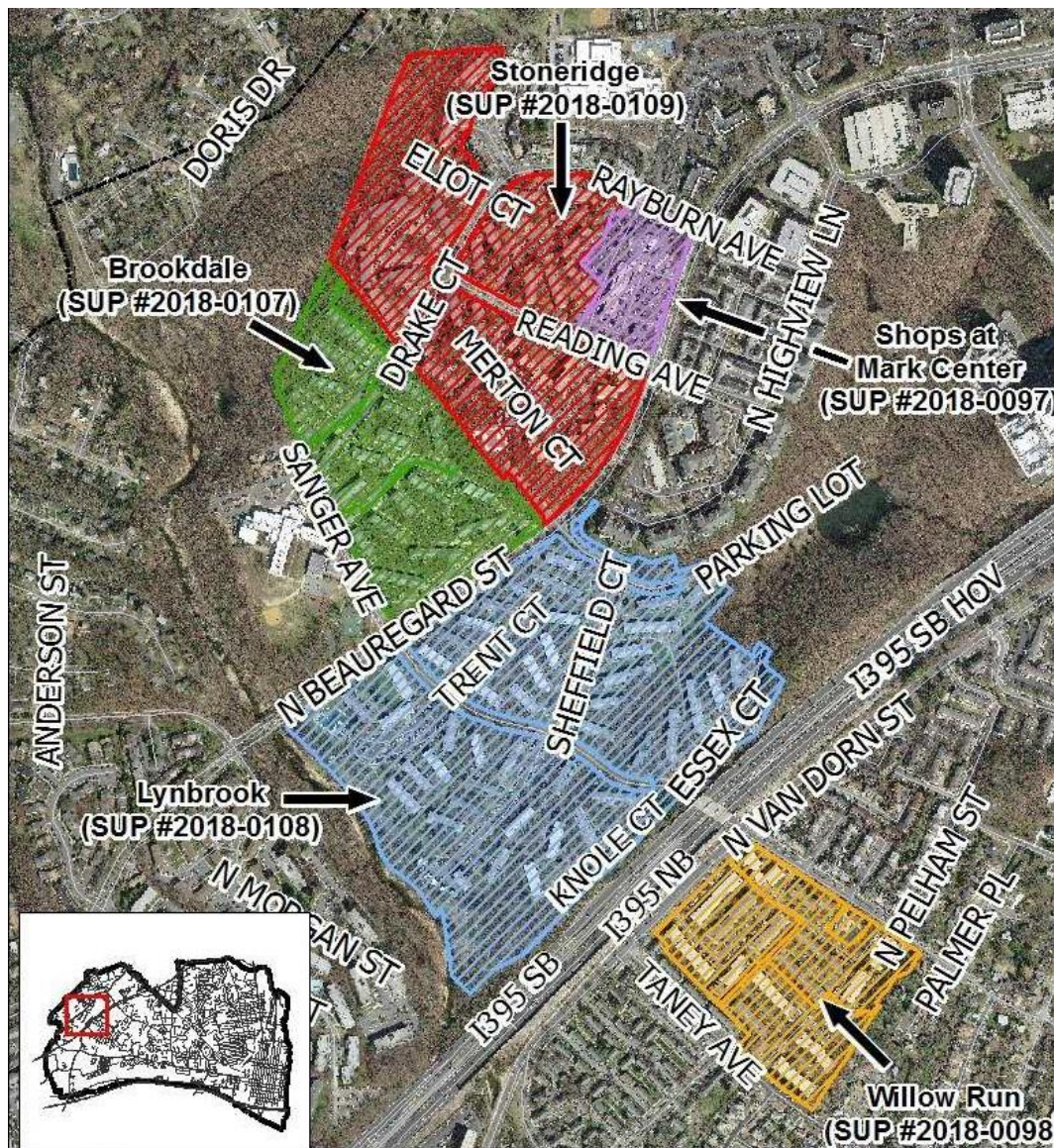




**SUP#2018-0097, SUP #2018-0098,  
SUP #2018-0107, SUP #2018-0108,  
& SUP #2018-0109**

**Morgan Properties Coordinated Sign  
Special Use Permit**

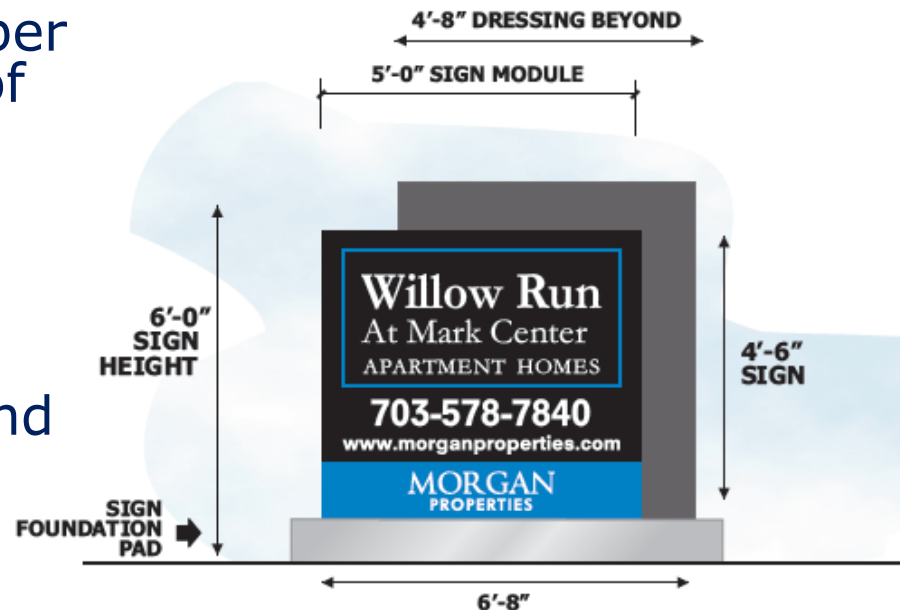
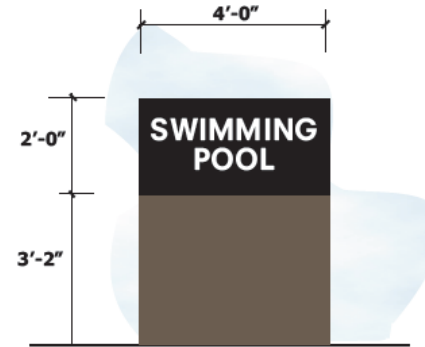
City Council  
December 15, 2018



A request for a coordinated sign program for the Willow Run, Brookdale, Lynbrook and Stoneridge at Mark Center Apartment Homes and for the Shops at Mark Center.

# Proposal Details

- Cohesive approach to update all on-site signage with a coordinated design, materials and color palette.
- Additional signage for overall square footage per sign and total number of signs per residential complex.
- Sign type includes monument, wayfinding, building identification and parking signage.





# Project Benefits

- Enhanced wayfinding and navigational assistance for residents, visitors and emergency services.
- Coordinated design across portfolio of residential properties at scale appropriate for development typology.
- Proposed signs reviewed for compliance with West End Transitway, emergency services, existing easements, sight-lines.

**Planning Commission recommends approval of all five Special Use Permits.**