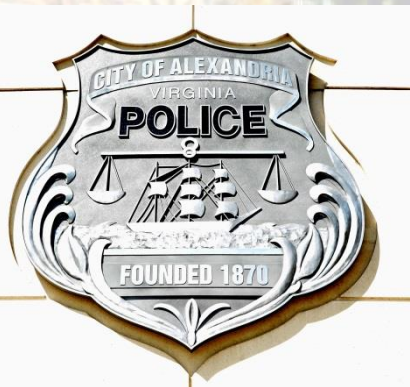


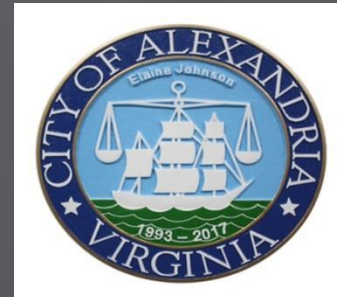
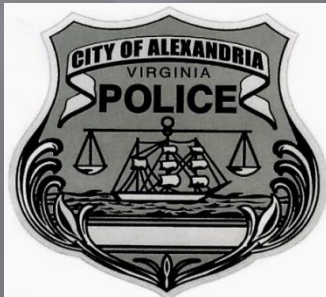
MAJOR PROGRAM UPDATES ALEXANDRIA POLICE DEPARTMENT



October 23, 2018

Major Program Updates

Reorganization **Crime Rates** **21st Century Policing** **Vision Zero** **Community Policing** **Staffing**
Strategic Plans **Employee Engagement** **Future Challenges**



Crime in the City

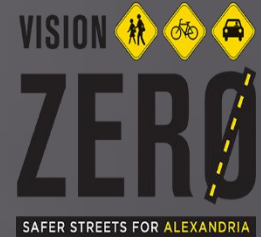
- ▣ Part I Crime
- ▣ Part II Crime
- ▣ Weekly Patrol Strategy Discussions

Part I Crimes				
Crime	2016	2017	Change	%Change
Homicide	7	6	-1	-14.3%
Rape	12	9	-3	-25.0%
Robbery	128	103	-25	-19.5%
Aggravated Assault	123	137	14	11.4%
Burglary	179	167	-12	-6.7%
Larceny	2,391	2,094	-297	-12.4%
Motor Vehicle Theft	268	178	-90	-33.6%
Total	3,108	2,694	-414	-13.3%

Nuisance Crimes				
Crime	2016	2017	Change	%Change
Destruction/Vandalism	1,056	904	-152	-14.4%
Prostitution	8	14	6	75.0%
Drug/Narcotic Offenses	683	952	269	39.4%
Gambling	1	1	0	0.0%
Disorderly Conduct	103	76	-27	-26.2%
DWI / DUI	296	381	85	28.7%
Drunkenness	355	459	104	29.3%
Liquor Law Violations	283	407	124	43.8%
Total	2,785	3,194	409	14.7%



- Traffic Safety & Education Plan
 - Plan is posted
- Traffic Safety Section Created
- Traffic Safety Officer Staffing Increased
- Traffic Safety Section Scheduling – 24/7
- Increased Enforcement
 - Complaints
 - Data analysis



Strategic Plans

- ▣ Broad Departmental Plan
- ▣ Division level planning effort
- ▣ Updated annually
- ▣ Plans are posted



21st Century Policing

- ▣ Plan updated and posted
- ▣ CAT 21
- ▣ Body Worn Cameras Update
- ▣ Integration with commercial property security and traffic safety cameras



Transparency Efforts

- ▣ Departmental Plans Posted
- ▣ Departmental Policies Published
- ▣ Reporting on Traffic Citation Data
- ▣ Modifications to Officer Data Collection
 - Traffic Stops
 - Domestic Violence Calls
 - Substance Abuse Issues

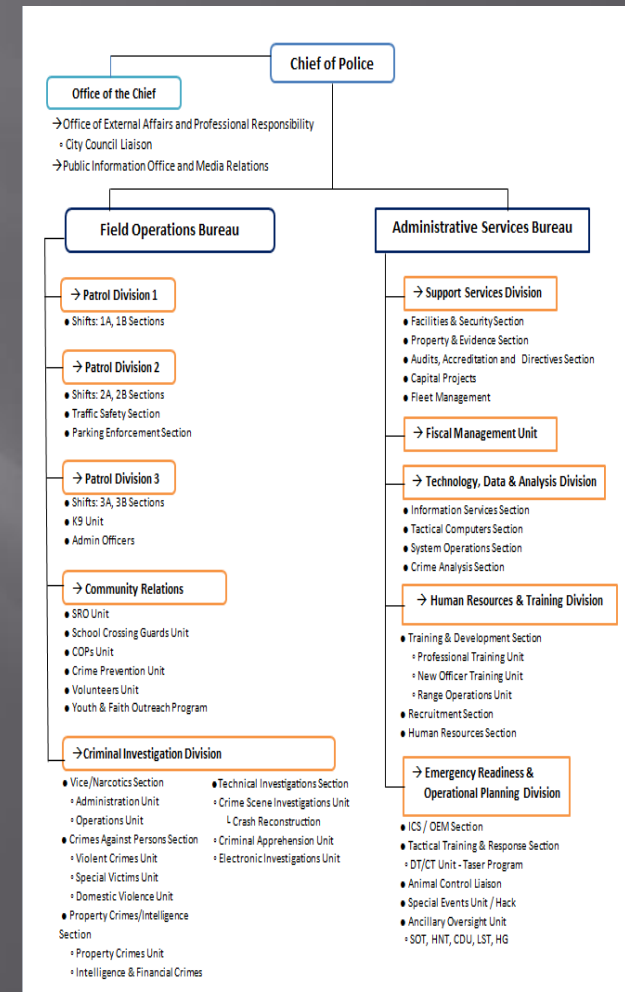
Staffing

- ▣ Over-hire staffing status
- ▣ Retention
 - Compensation
- ▣ Recruiting
- ▣ Parking Enforcement Officers
- ▣ Challenges
 - School Crossing Guards



Reorganization

- ▣ Initial Reorganization
- ▣ Subsequent Assessment
- ▣ Final Reorganization
- ▣ Assistant Chief & Assistant Director Positions



Community Policing

- ▣ Doubled the Commitment
- ▣ Officers assigned specific locations & schools
- ▣ Youth Programs

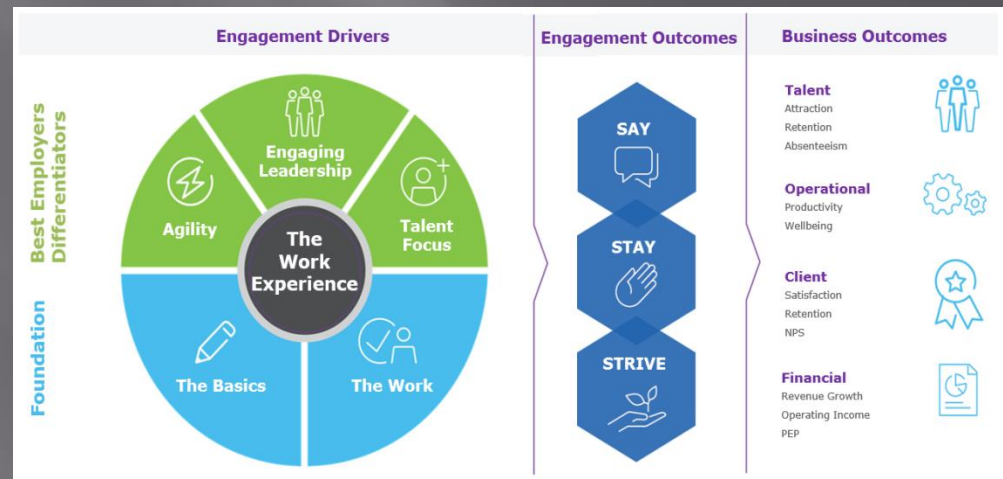


Other Significant Changes

- ▣ Electronic Uniform Summons for Traffic
- ▣ Electronic Parking Citations
- ▣ Revised RMS Conversion
 - Expanded data & server reach
 - Improved analysis potential
- ▣ Revised Protocols for Officer Involved Shooting Investigations

Employee Engagement

- ▣ Engagement Plan Developed & Implemented
- ▣ “Ask the Chief” sessions
- ▣ Individual Unit Briefings & Meetings
- ▣ Employee Association /Leadership Relationships



Additional Future Challenges

- ▣ Connecting with the West End Populations
- ▣ Traffic Safety & Management
- ▣ Fleet operations
 - Vehicles/Mission realignment
 - Hybrid/electric vehicle assessments
- ▣ Civil Disturbance Preparedness
 - Training & Planning



A person wearing a dark blue suit and a light blue shirt is holding a white rectangular sign with both hands. The sign has the word "QUESTIONS?" written on it in a bold, dark blue, sans-serif font. The background is a plain, light grey wall.

QUESTIONS?