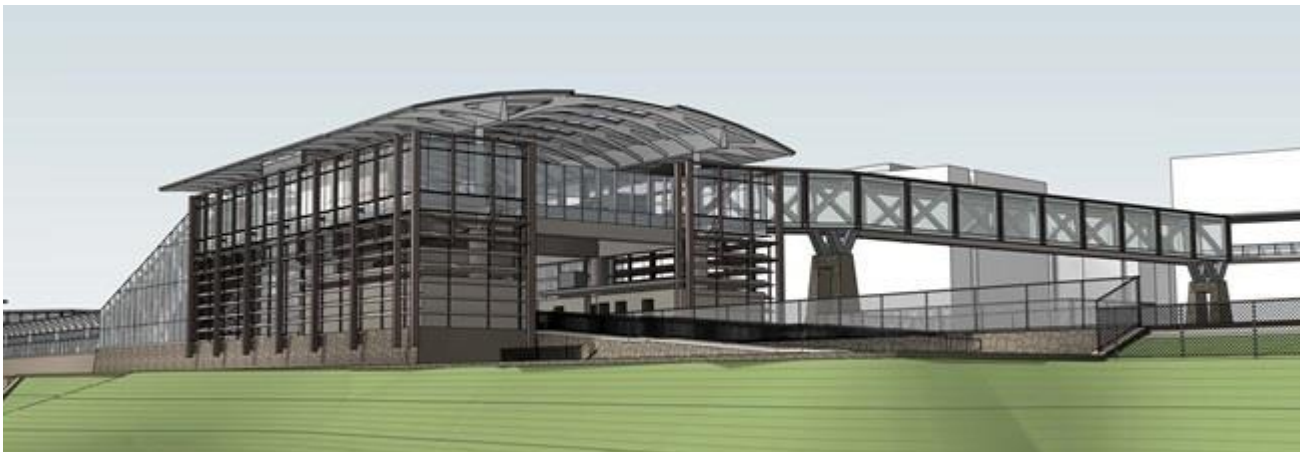


POTOMAC YARD METRORAIL STATION PROJECT

BAR Project Update

October 17, 2018



WMATA DESIGN-BUILD CONTRACT AWARD

- Construction contract valued at \$213.7M awarded to Potomac Yard Constructors JV
 - Halmar International
 - Schiavone Construction Co
 - ARUP
- Contract includes provision of direct access from East Glebe Road to the fare gates

PROJECT BUDGET

Construction contract	\$214M
Station equipment/technology/misc.	\$9M
Real estate lease, etc.	\$6M
WMATA staff and consultants	\$27M
NPS NBA, environmental mitigation	\$20M
City oversight	\$10M
Contingencies	<u>\$34M</u>
Total	\$320M



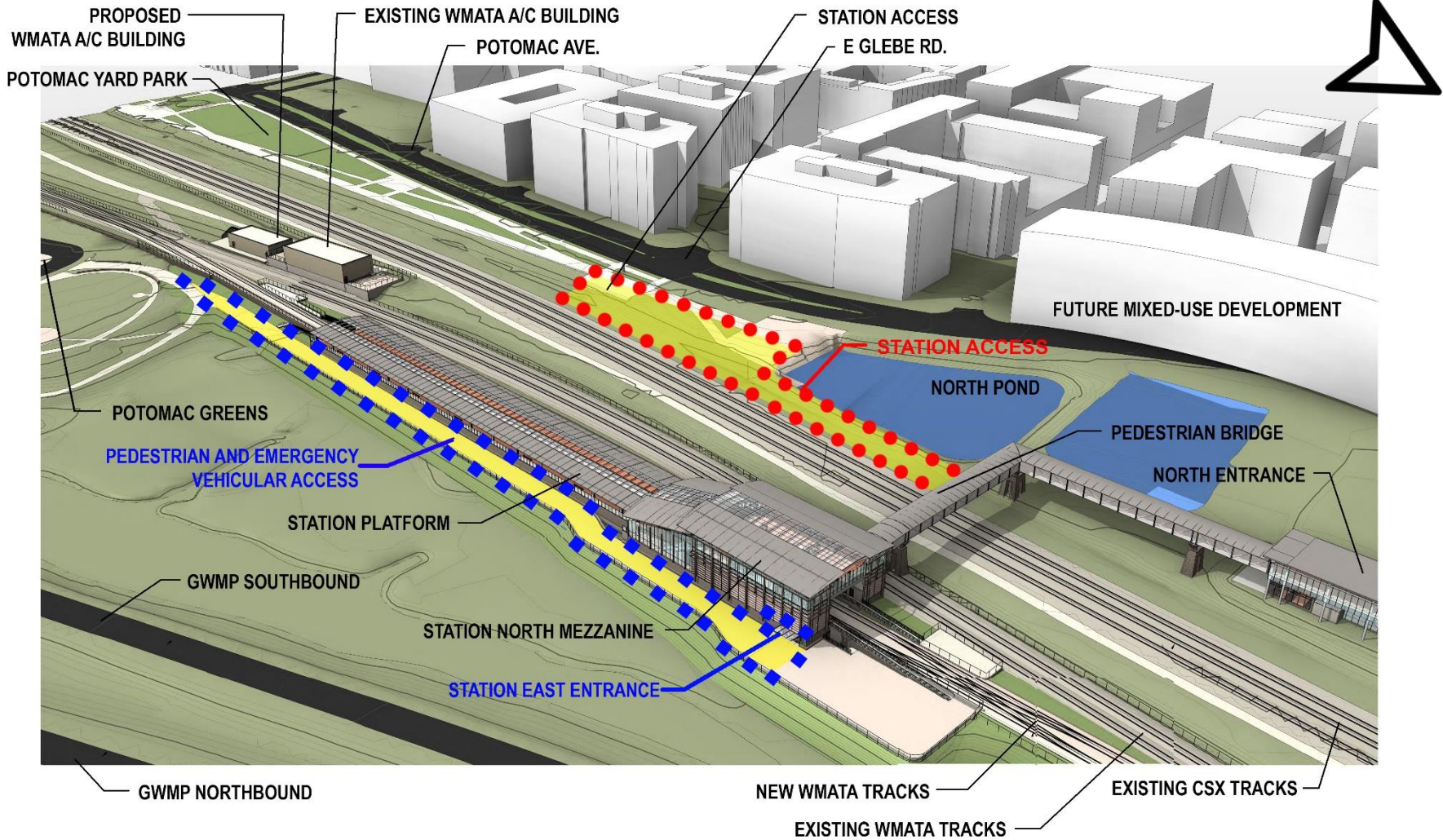
DSUP AMENDMENT MAJOR ELEMENTS

- Eliminated South Station Entrance and Ramps
- Redesigned station access from East Glebe Road to connect to north station entrance
- Redesigned station access from Potomac Greens

ORIGINAL STATION DESIGN



ELEMENTS SUBJECT TO REDESIGN



DESIGN DEVELOPMENT PROCESS

- Design options will be presented to PYMIG in October and November for feedback and discussion
- Planning Commission and City Council Public Hearings and decisions anticipated in December
- BAR Certificate of Appropriateness during final design

PROJECT TIMELINE

- Late 2018 - Pre-design site activity
- Late 2019 - Site preparation
- Early 2020 - Initiation of station construction
- Early 2022 - Project completion based on contract milestones



QUESTIONS?