

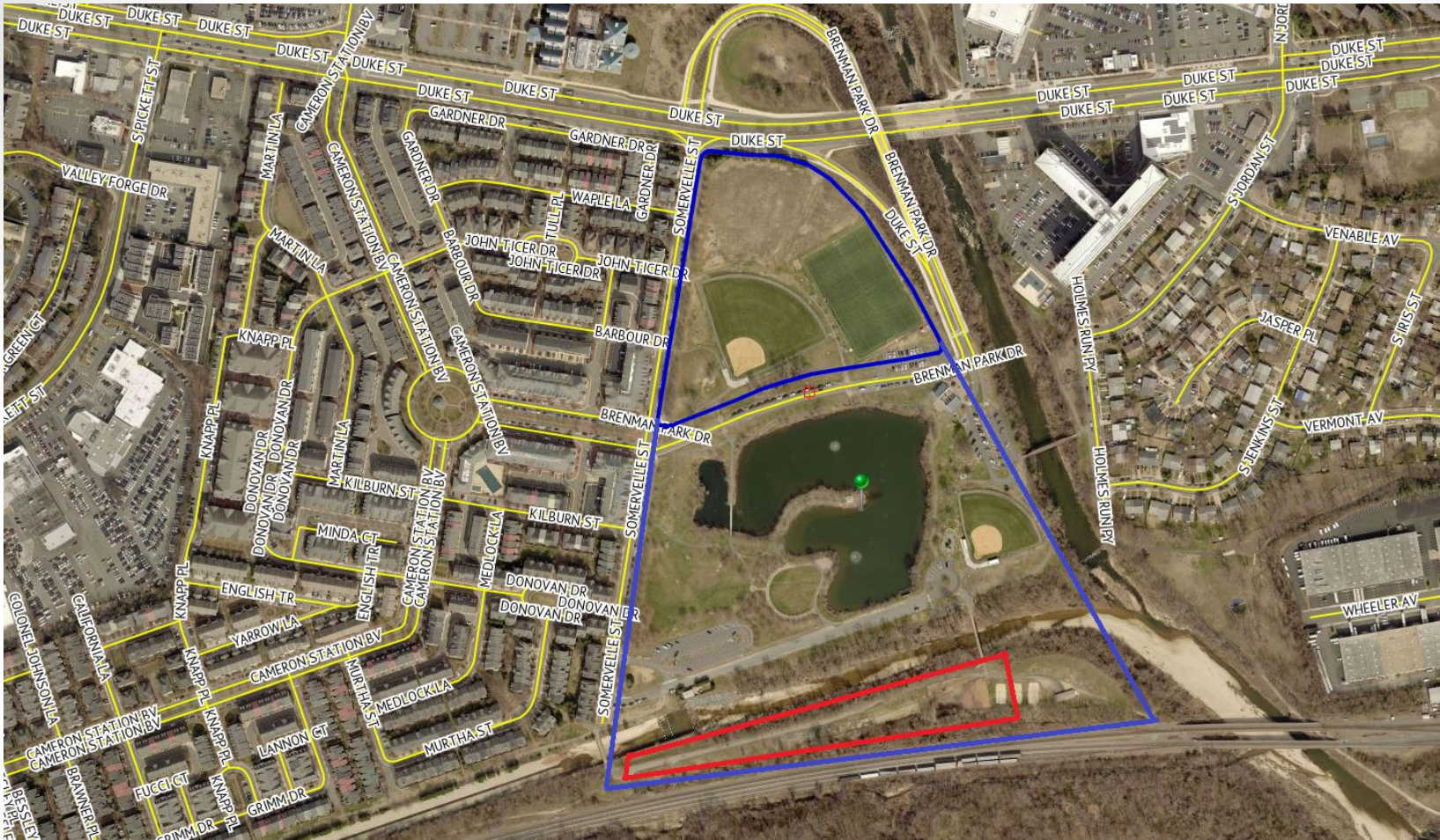


SUP#2018-0020

4800 Brenman Park Drive

Planning Commission

June 5, 2018



- $$\begin{bmatrix} 2 \end{bmatrix}$$

Lighting Configuration





- Condition #2: ~~User activated lighting shall be available between 6 a.m. and 10 p.m. (P&Z) (SUP #2015-0128)~~
- The lighting and shall be consistent with park hours (Condition #5).



STAFF RECCOMENDS APPROVAL

Supplemental Materials

