

PROPOSED EXTERIOR MATERIALS

FOR 601 N. ALFRED STREET, ALEXANDRIA, VA

NOTE 1: ALL MATERIAL COLORS AND PAINTS SHALL BE SELECTED BASED ON THE APPROVED COLOR PALETTE FOR THIS HISTORIC DISTRICT AS SET FORTH BY THE CITY OF ALEXANDRIA.

NOTE 2: PRODUCT MATERIALS IDENTIFIED IS TO RELAY OVERALL DESIGN INTENT. ACTUAL PRODUCT MATERIALS SELECTED SHALL COMPLY WITH THE DESIGN INTENT.

ROOFING

1. AT ROOFS WITH MINIMUM 3:12 PITCH; ASPHALT SHINGLE ROOFING: MINIMUM 20 YEAR, SELF-SEALING ASPHALT SHINGLES AS MANUFACTURED BY CERTAINTED FROM MAUNFACTURER'S STANDARD AT WEBLINK WWW.CERTAINTEED.COM/PRODUCTS/ROOFING/RESIDENTIAL#
2. SINGLE-PLY MEMBRANE ROOFING SYSTEM (FULLY ADHERED AND/ OR MECHANICALLY FASTENED) AS MANUFACTURED BY GAF; WEBLINK AT WWW.GAF.COM/ROOFING/COMMERCIAL/PRODUCTS/SINGLE_PLY_ROOFING
3. ROOF TERRACE WALKING SURFACE
TREX FLOOR PLANKS ON BUILT-UP PRESSURE-TREATED 2"X DRAINAGE FLOOR; OVER SINGLE-PLY MEMBRANE DRAIN SURFACE.

ROOF GUTTER

GUTTERBOX: PRE-FINISHED ALUMINUM CATCH BOX PROFILE WITH MATED, RECTANGULAR DOWNSPOUTS; PRE-CAST CONCRETE SPLASH BLOCKS.

WINDOWS

JELD WEN SITELINE ®, PRE-FINISHED, METAL CLAD WOOD, WHITE FRAME, INTERNAL WINDOW GRILLE AS SHOWN ON ELEVATIONS; BOTH FIXED AND OPERABLE UNITS, LOW E, INSULATED GLASS, FULL INSECT SCREENS AT OPERABLE UNITS OR APPROVED EQUAL. GLAZING SHALL BE CLEAR, INSULATED (REFLECTIVE/ TINTED GLAZING PROHIBITED). LINK: [HTTP://WWW.JELD-WEN.COM/EN-US/PRODUCTS/WINDOWS/STYLES/CASEMENT](http://WWW.JELD-WEN.COM/EN-US/PRODUCTS/WINDOWS/STYLES/CASEMENT).

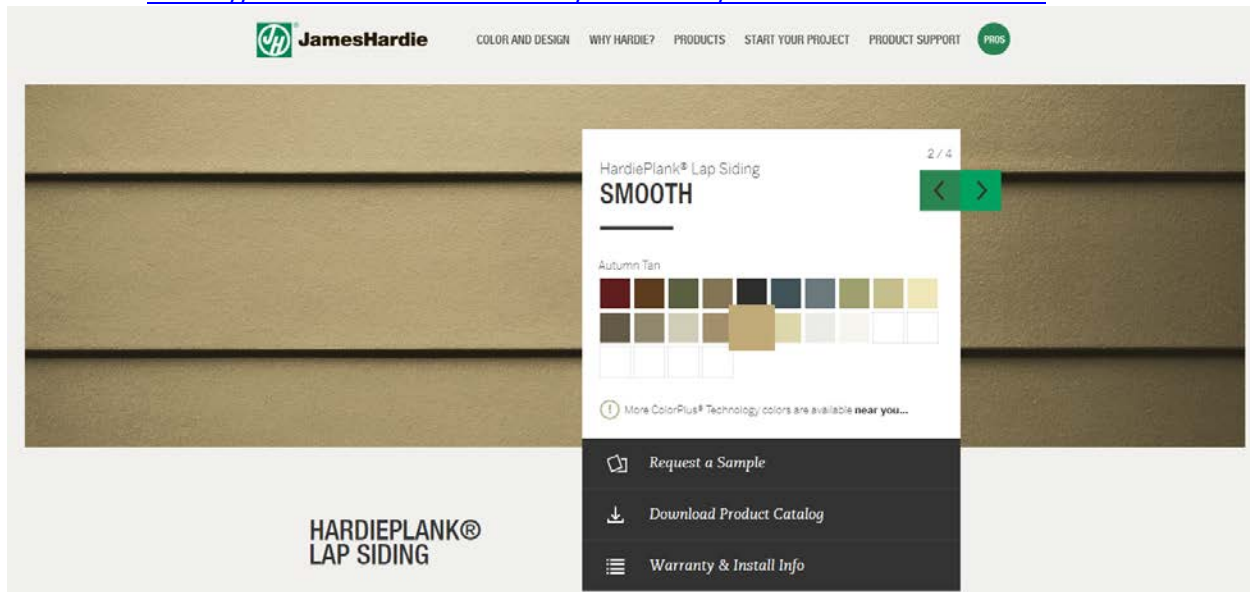


EXTERIOR BUILDING TRIM AND WINDOW/ DOOR HEADER TRIM

- BUILDING TRIM SHALL MATCH THE MATERIAL OF THE LAP SIDING.
- HEADER TRIM- BUILT-UP 1"X SHEET TRIM WITH 1"X HEAD CAP

PERIMETER WALLS- SIDE AND REAR

HARDIE PLANK 5 OR 6" LAP SIDING, SMOOTH TEXTURE, PAINTED WITH MATED TRIM;
WEBLINK <https://www.jameshardie.com/products/hardieplank-lap-siding> .



TRIM

AT THE N. ALFRED STREET VENEER FACE, THE WINDOW TRIM OPENINGS ABOVE THE MAIN ENTRYS ARE 1" X 4" TRIM ON THE JAMBS AND SILLS (WITH RETURNS); 1" X 8" WINDOW TRIM AT THE HEADS (WITH RETURNS).

AT THE DOOR AND WINDOW OPENINGS IN THE HARDIE PLANK LAP SIDING, THE OPENING TRIM IS 1" X 2".

BRICK MASONRY

BRICK VENEER SHALL BE GENERAL SHALE, ENGINEER MODULAR BRICK (ROANKE, VA COLLECTION), SEE BELOW:



BRICK MORTAR SHALL BE CONCAVE STRUCK, COLOR: FLAMINGO-BRIXMENT MORTAR IN SOFT WHITE (SEE BELOW)

SW	Soft White
C-380	White Oak
C-73	Almond
OC	Old Colonial
B-11	Clay
C-320	Boston Crème
Beige	Beige

THE BRICK PATIOS SHALL BE LOOSE LAID PAVERS, COLOR TO BE SIMILAR TO THE BRICK VENEER.

THE FRONT STOOP AND STEPS ARE BRICK VENEER WITH PROJECTING ROUND PROFILE TREAD NOSING;
THE REAR STOOP AND STEPS BRICK VENEER WITH SQUARE TREAD NOSING.

WHERE THE MASONRY WALL FACE BUTTS 90 DEGREES TO THE LAP SIDING, A 5/4" SPACER BOARD WILL BE USED TO PROVIDE A CAULK JOINT BETWEEN THE DISSIMILAR MATERIALS.

WHERE THE MASONRY WALL FACE BUTTS FLUSH TO THE LAP SIDING ON THE SAME PLANE, A 5/4" SPACER BOARD WILL BE USED TO PROVIDE A CAULK JOINT BETWEEN THE DISSIMILAR MATERIALS.

EXTERIOR DOORS

PULSE THERMA-TRU® WOOD DOORS, PATTERNED GLASS PANELS (TBD) IN FRONT ENTRY DOOR ([HTTPS://WWW.THERMATRU.COM/EXPLORE-DOORS/DOOR-COLLECTIONS/PULSE/](https://www.thermatru.com/explore-doors/door-collections/pulse/)). PAINTED DOORS SHALL BE EARTH TONE COLORS, FROM THE CITY'S APPROVED COLOR PALETTE.

		
#601 & #603 FRONT ENTRY PULSE™ ARI 3-LITE	FRONT ENTRY DOOR PATTERN GLASS- EXACT DESIGN TBD	#601 & #603 REAR ENTRY AND ROOF TERRACE WITH CLEAR GLASS

FRONT AND REAR ENTRY

[Home](#) / [Products](#) / [Argyle 1 Light LED Outdoor Wall WZC](#)



[larger view](#) [choose background color](#) [rollover 1](#)

Argyle 1 Light LED Outdoor Wall WZC49743WZCL16 (Weathered Zinc)

Technical Information

Weight:	4.50 LBS
Safety Rated:	Wet
HCWO:	2.25"
Base Backplate:	4.50 X 6.50
Collection:	Argyle Collection
Color Rendering Index:	80
Width:	6.50"
Height:	10.25"
Lamp Included:	Included
Glass Description:	Clear Seeded
Extension:	7.50"
Voltage:	120V
Energy Star:	Yes
Light Source:	LED
Kelvin Temperature:	3000K
Socket Base:	Medium
Lamp Type:	A19
Initial Lumens:	800
Number of Lights/LEDs:	1
Finish:	Weathered Zinc

[HTTP://WWW.KICHLER.COM/PRODUCTS/PRODUCT/ARGYLE-1-LIGHT-LED-OUTDOOR-WALL-IN-WZC-49743WZCL16.ASPX](http://www.kichler.com/products/product/argyle-1-light-led-outdoor-wall-in-wzc-49743wzcl16.aspx)

ROOF TERRACE

[Home](#) / [Products](#) / [Dahlia Medium LED Outdoor Wall Light in AZ](#)



DAHLIA MEDIUM LED OUTDOOR WALL LIGHT 49557AZLED (Architectural Bronze)

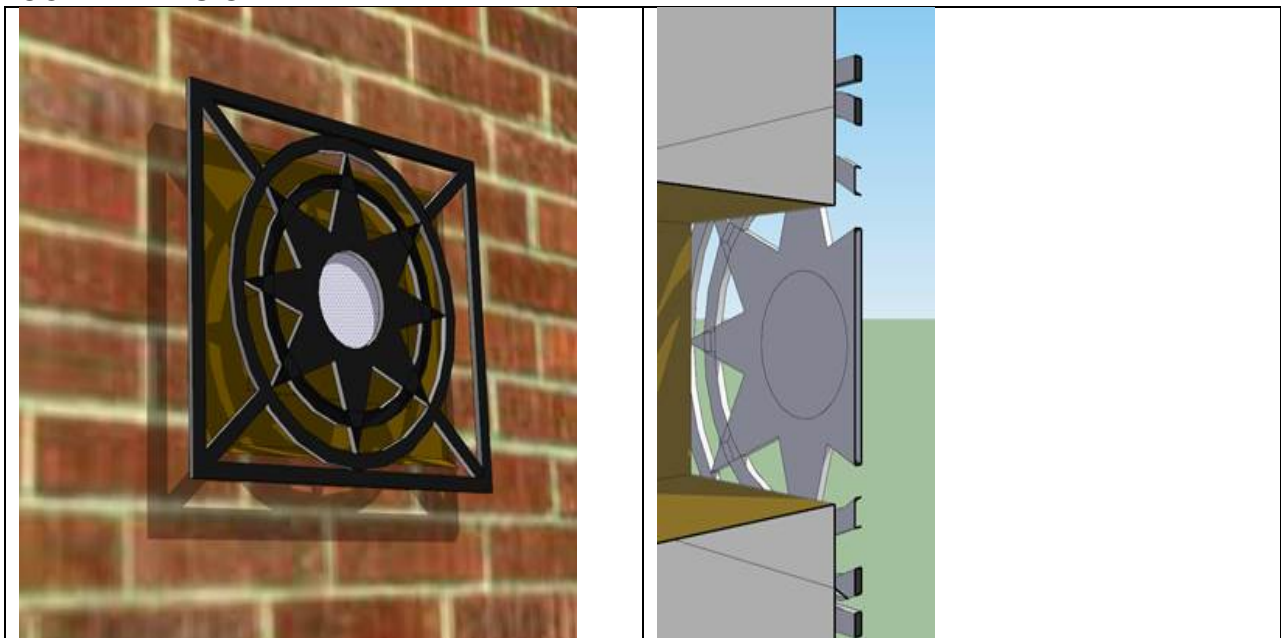
Technical Information

Weight:	9.45 LBS
Safety Rated:	Wet
HCWO:	10.00"
Base Backplate:	7.75 X 4.00
Delivered Lumens:	650
Max Wattage/Range:	40W
Collection:	Dahlia Collection
Width:	8.00"
Height:	18.75"
Glass Description:	White Glass
Extension:	4.00"
Voltage:	120V
Kelvin Temperature:	3000K
Lamp Included:	Integrated
Light Source:	LED
Delivered Lumens:	650
Number of Lights/LEDs:	2
Color Rendering Index:	90
Expected Life Span:	40000 Hours
Initial Lumens:	1600
Title 24:	Yes
Finish:	Architectural Bronze

<http://www.kichler.com/products/product/dahlia-medium-led-outdoor-wall-light-in-az->

MISCELLANEOUS ARCHITECTURAL FEATURES

TWO (2) ROOF TERRACE SUPPER OVERFLOWS ('MEDALLIONS') ARE INTRODUCED ON THE N. ALFRED STREET FACE; FLANKING THE 2ND STORY WINDOWS ABOVE THE MAIN ENTRIES. TO CREATE A MORE BALANCED COMPOSITION, FOUR (4) 'MEDALLIONS' ARE INTRODUCED, 2 OF WHICH WILL BE CONCEALING SCUPPERS BEHIND THEM. THE THROUGH-WALL ROOF SCUPPERS ARE NOMINALLY 6"H X 8"W WITH 12"H X 14"W NOMINAL IRON WORK MEDALLIONS HELD NOMINALLY 1" OFF THE VENEER FACE WITH SPACERS. THE DESIGN PROVIDED IS PRELIMINARY ONLY AND IS INTENDED TO CONVEY DESIGN INTENT.

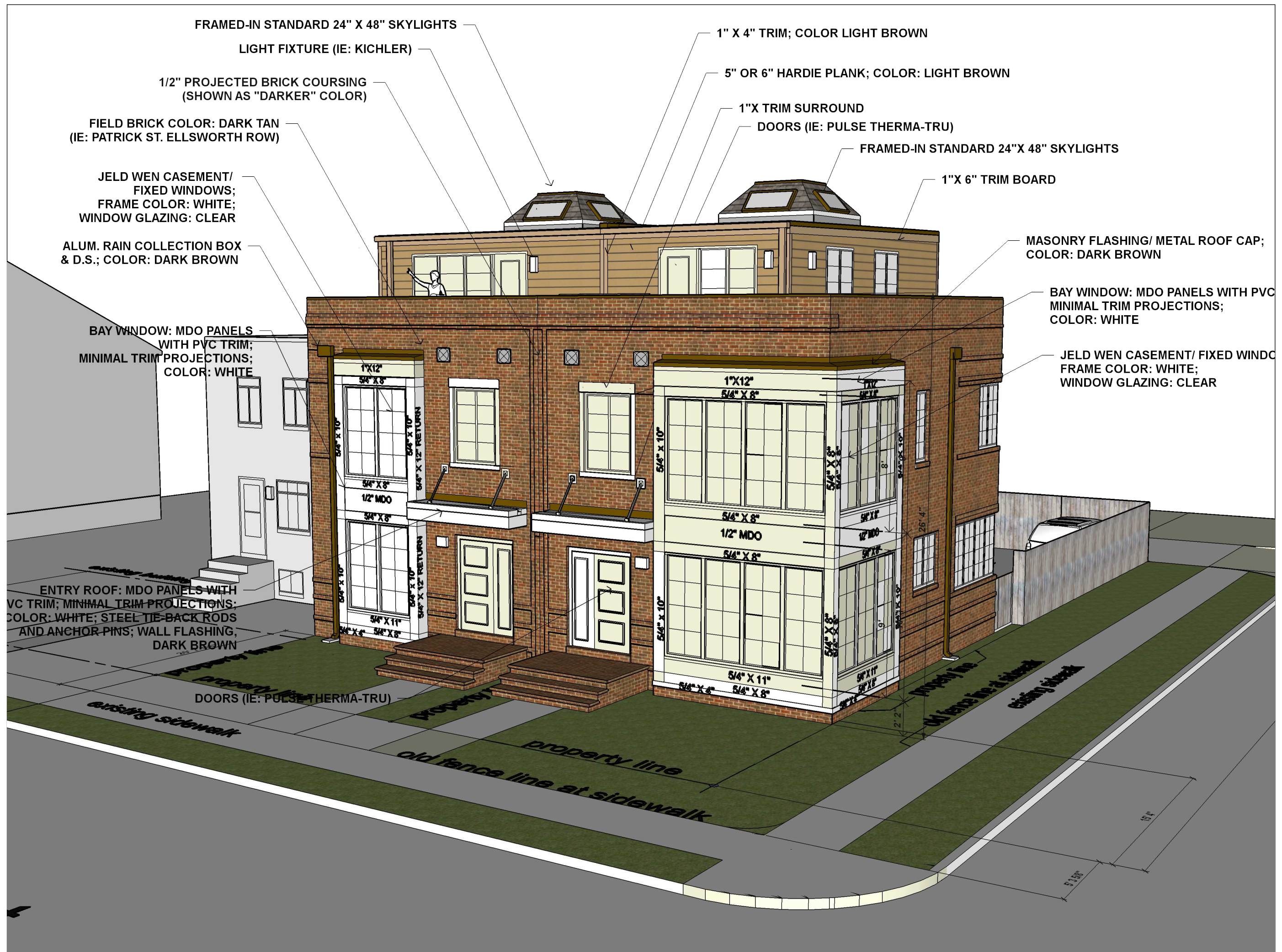


THE PERGOLAS IN THE REAR YARD HAVE BEEN REFINED TO BUILDING-SUPPORTED, OPEN HANGING TRELLIS'; TO PROVIDE A 'CANOPY' EFFECT OVER THE REAR ENTRY. TRELLIS FRAMING MATERIALS ARE NOMINAL 2"X 6" AND 2" X 8" WOOD MEMBERS WITH METAL TIE RODS AND ANCHORING SYSTEM; FASCIA SHALL BE PAINTED MDO AND/ OR PLASTIC RESIN TRIM.

HVAC EQUIPMENT

- I. SPLIT SYSTEMS
- II. ROOF TOP CONDENSERS ON FLAT HOUSEKEEPING PADS; AIR HANDLERS IN BUILDING INTERIOR.





COMPANY NAME
 The Lieumann Firm, Architects
 5705 Deer Pond Road
 Centreville, VA 20120
 703 589 6994



CLIENT
 Regent Company
 3082 Spring St.
 Alexandria, VA 22036

PROJECT
 601 & 603 N. Alfred St.
 New Residence

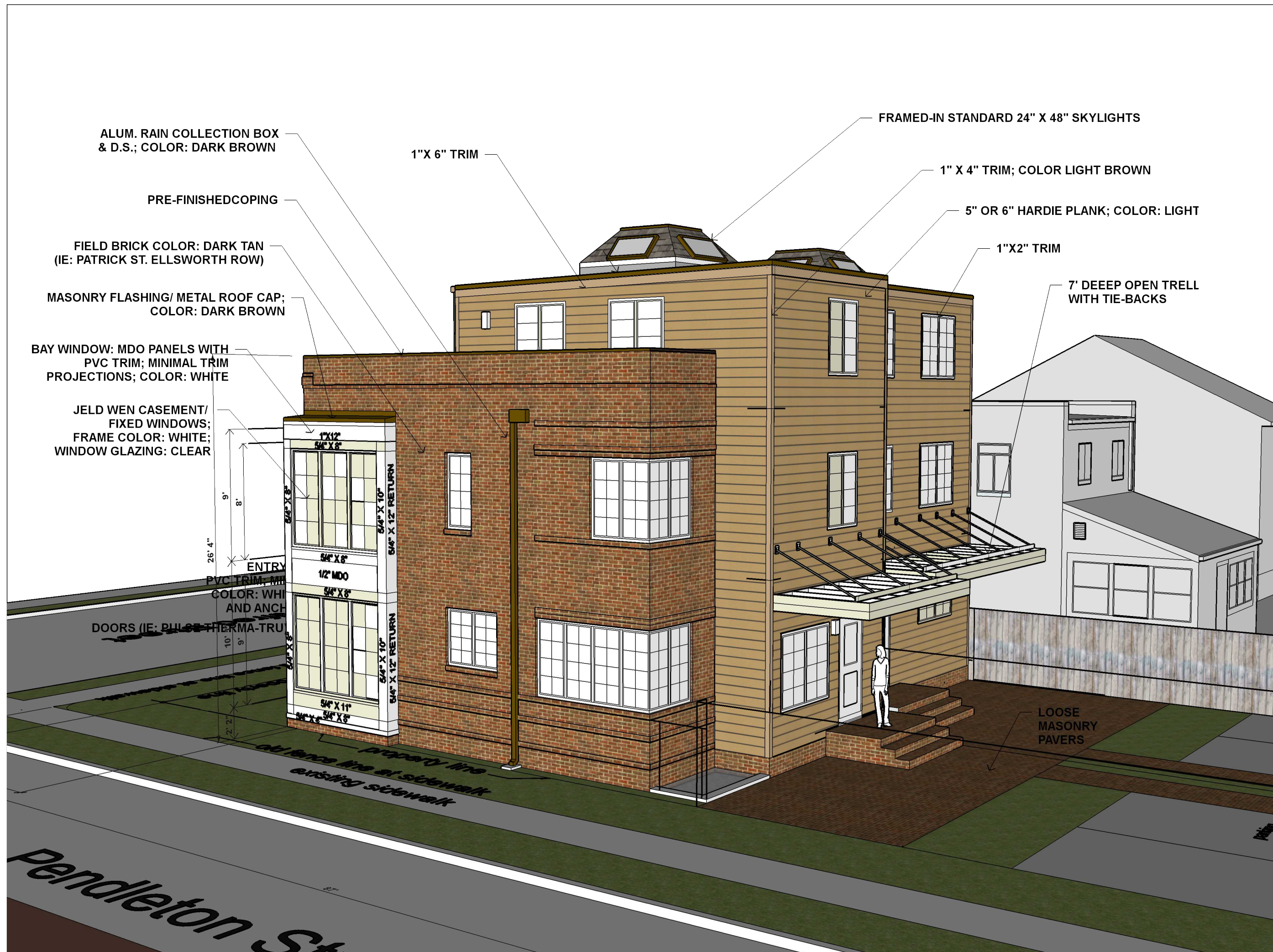
PROJECT NO.

ISSUE
 Nov 20, 2017

DRAWN BY

3D Building Elevations

A9



COMPANY NAME
The Lieumann Firm, Architects
5705 Deer Pond Road
Centreville, VA 20120
703 589 6994



CLIENT
Regent Company
3082 Spring St.
Alexandria, VA 22036

PROJECT
601 & 603 N. Alfred St.
New Residence
PROJECT NO.

ISSUE
Nov 20, 2017
DRAWN BY

**3D Building
Elevations**

A10

