



SUP #2017-0064

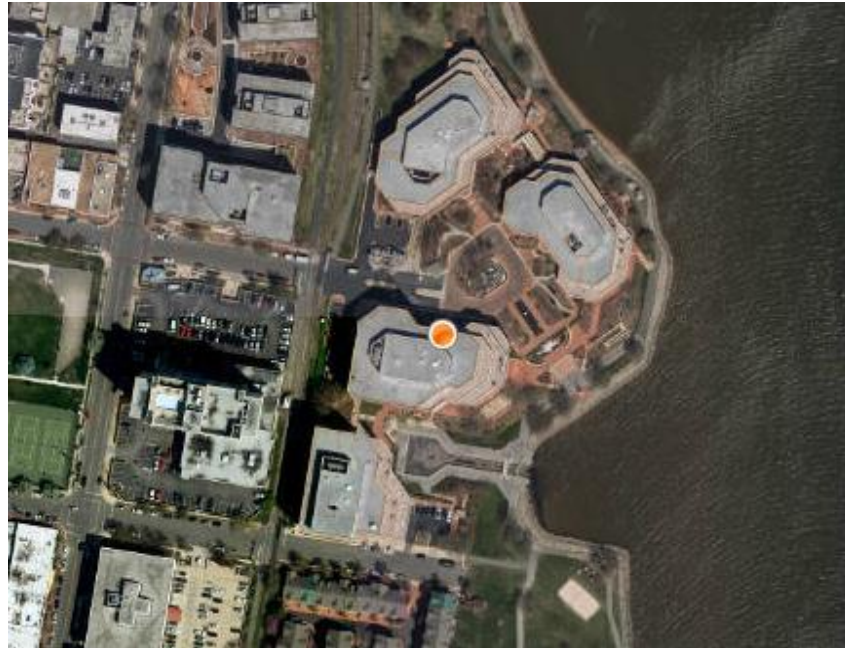
44 Canal Center Plaza

Café 44

City Council

September 16, 2017

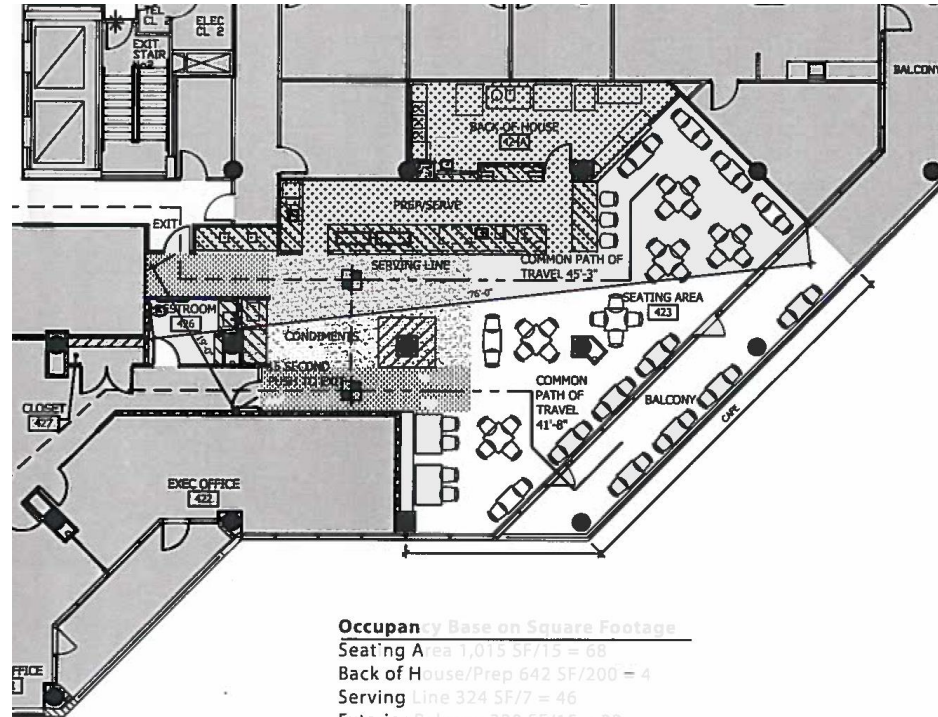
- The applicant requests Special Use Permit approval for a restaurant at 44 Canal Center Plaza.
- Hours: 7 a.m. – 8 p.m.
- Alcohol: on and off-premises
- Seats: 52 indoor seats, 8 outdoor seats
- Staff supports the applicant's request.





- The proposed restaurant will operate out of the fourth floor, and include a 8 seats to be located on the adjoining terrace.
- Parking is available on the on-site garage.

- The request includes 52 indoor seats, 8 outdoor seats.

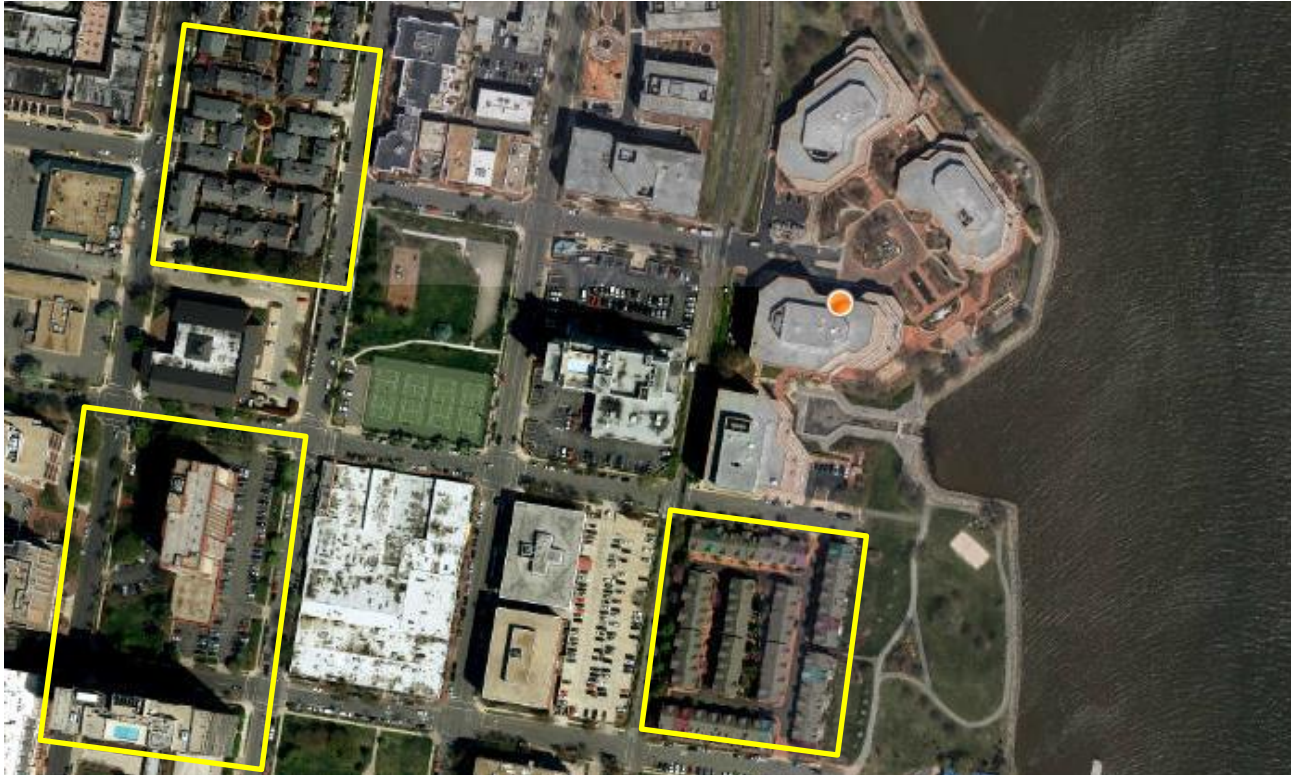


Occupancy Base on Square Footage

Seating Area 1,015 SF/15 = 68
 Back of House/Prep 642 SF/200 = 4
 Serving Line 324 SF/7 = 46
 Exterior Balcony 320 SF/15 = 22
 Egress Corridor 197 SF/100 = 2

Actual Seating Shown

52 Seats Interior
 8 Seats Balcony



- The nearest residential areas, outlined in yellow.