



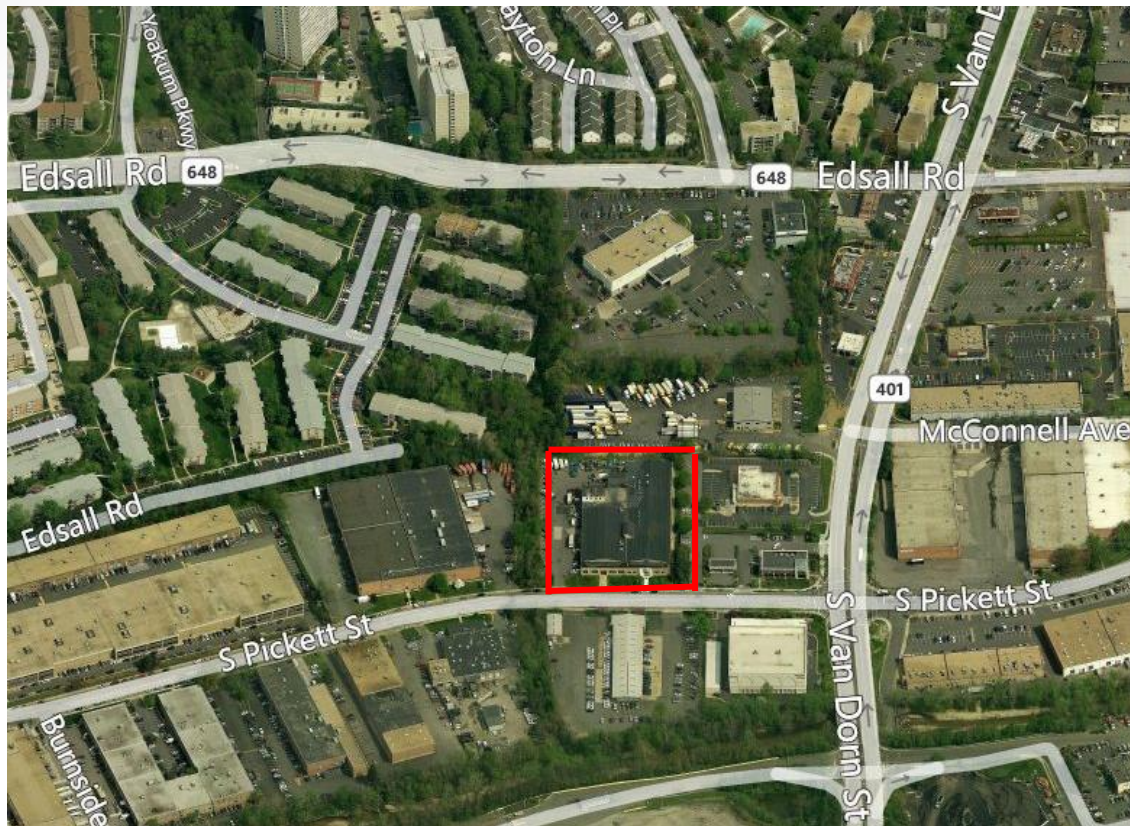
# **SUP #2017-0069**

## **725 S. Pickett St.**

### **ALSCO**

City Council

September 16, 2017



- The applicant requests a parking reduction of 105 spaces for an existing commercial laundry.

- The applicant is increasing on-site parking to 58 spaces from 30.
- Parking will include 33 passenger vehicle spaces and 25 truck parking spaces.



## Deconstructed parking calculations

Section	Requirement Type	Employees over 20	Spaces Req.
8-200 (20)(a)	Requirement for 4473 sq. ft. of office	---	12
8-200 (20)(b)	Requirement for 53840 sq. ft. of non-office / industrial floor area	---	108
8-200 (20)(c)	Additional requirement of parking for every three employees in excess of 20.	127	43

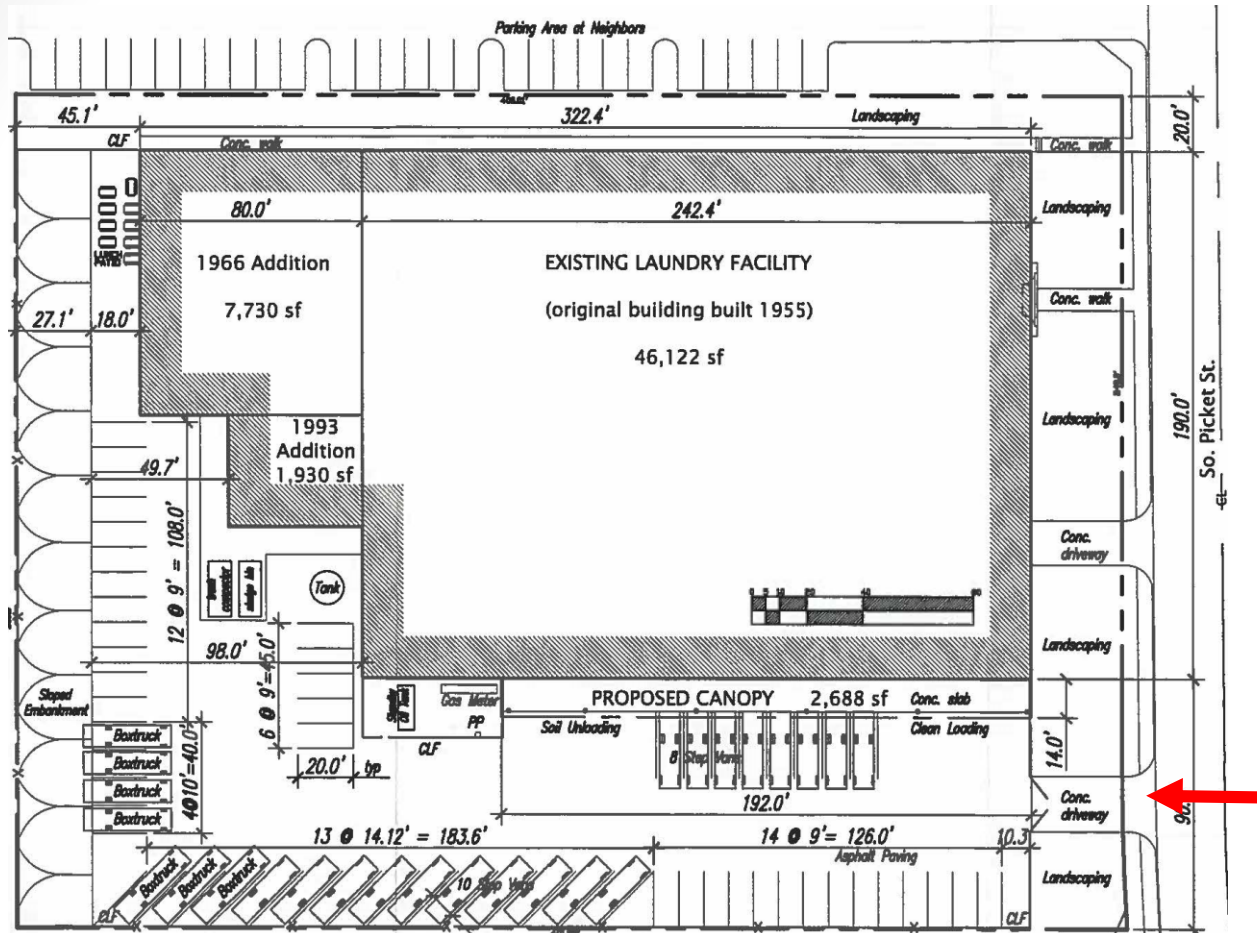


- The proposed parking configuration will accommodate those employees currently parking on-site and on-street.

Parking Type	Current	New
Passenger	14	33
Truck	16	25
Total	30	58

## Employee Transit Split

Transit type	Number of employees
Walk	14
Public transportation (Bus, Metro)	47
On-site parking	14
Off-Site parking	37
Street parking	17



- Proposed parking arrangement.

- Staff recommends approval.
- The applicant's parking management plan demonstrates acceptable measures to mitigate neighborhood impacts.
- Staff has included standard conditions related to parking reductions, including:
  - Condition #2: all employees are required to park off-street.
  - Condition #3 signage directing customers to off-street parking.
  - Conditions #4, #5: advertising of public transportation and establishment of transit benefits program through GoAlex.