

# Braddock Gateway Phase 1 Amendments

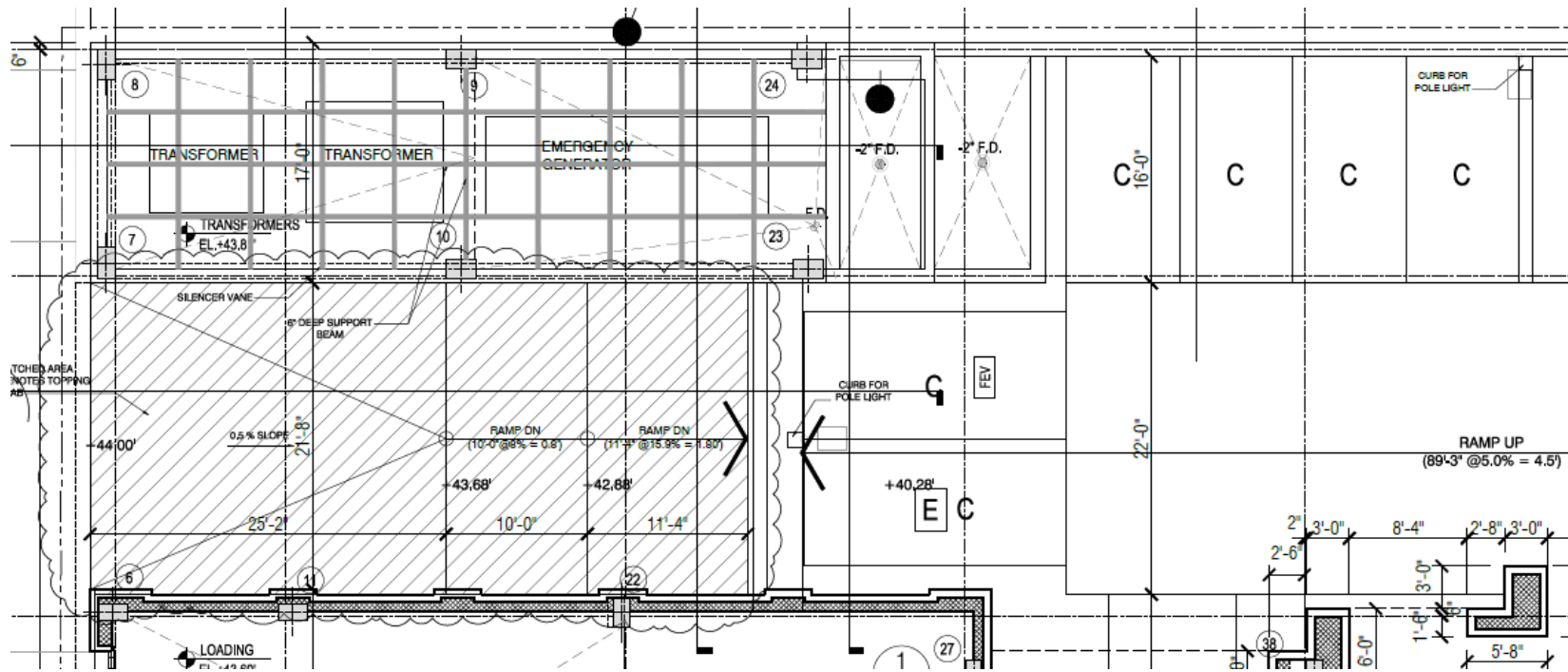
*DSUP#2017-0003*

City Council



April 22, 2017

# Garage Ramp Slope



# Updated Parking Calculations

	Previous Parking Requirements	New Parking Standards	Proposed On-Site Residential Parking
<b>Parking for Residents</b>	243 spaces (0.9 x 270 units)	237 – 264 spaces  (0.72 x 329 bedrooms with deductions, 0.80 x 329 bedrooms with no deductions)	244 spaces
<b>Parking for Visitors</b>	37 spaces (23 on-site, 14 off-site)  (243 spaces x 15%)	No separate requirement – included in the overall parking requirement  (guidance is 5%-10% of residential spaces provided)	19 spaces (on-site)  (244 spaces x 7.8%)
<b>Total Residential Parking</b>	280 spaces	237 – 264 spaces required	264 spaces

# Conclusion



