

Figure 4: Proposed stoop design, consisting of a landing and steps (in orange) and proposed area of encroachment (in red).

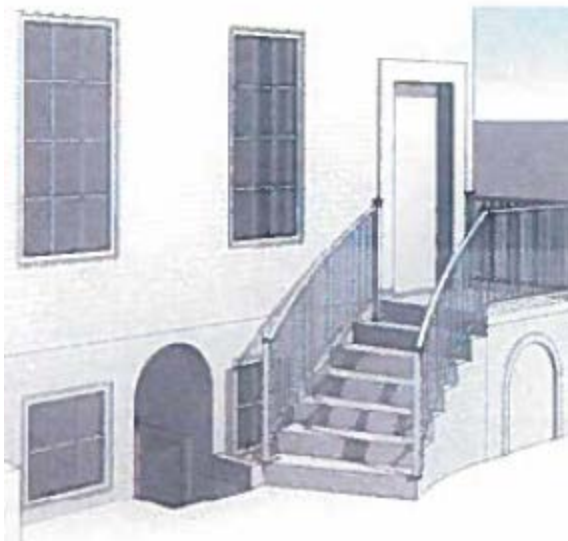
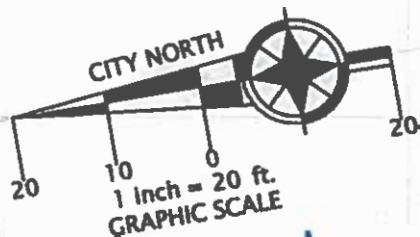


Figure 5: Rendering of proposed stoop, consisting of stairs, landing, and railing.

COPYRIGHT BY DOMINION SURVEYORS, INC. THE INFORMATION CONTAINED ON THIS DOCUMENT MAY NOT BE COPIED, REPRODUCED OR ALTERED IN ANY FORM WITHOUT PERMISSION IN WRITING FROM THE COPYRIGHT OWNER.



N/F BECKWITH

MONUMENT LINE
DUKE STREET

N/F WOLFE

N/F BECKWITH

1 STORY
BRICK & FRAME
GARAGE & DWELLING
S 09°30'00" W
14.09'

1.1'x1.1'
BRICK PILLARS

WALL
ON 0.3'

BRICK
PATIO &
GARDEN
AREA

BRICK
PATIO

0.7' BRICK WALL
ON LINE

WALL
ON LINE

9.1'

9.1'

9.1'

9.1'

9.1'

9.1'

9.1'

9.1'

9.1'

9.1'

9.1'

9.1'

9.1'

9.1'

9.1'

9.1'

9.1'

9.1'

9.1'

9.1'

9.1'

9.1'

9.1'

9.1'

9.1'

9.1'

9.1'

9.1'

9.1'

9.1'

9.1'

9.1'

9.1'

9.1'

9.1'

9.1'

9.1'

9.1'

9.1'

9.1'

9.1'

3 STORY
BRICK
DWELLING

999 SF
(COMP)

3 STORY
BRICK
DWELLING

#310

45.0'

45.6'

45.6'

45.6'

45.6'

45.6'

45.6'

45.6'

45.6'

45.6'

45.6'

45.6'

45.6'

45.6'

45.6'

45.6'

45.6'

45.6'

45.6'

45.6'

45.6'

45.6'

45.6'

45.6'

45.6'

45.6'

45.6'

45.6'

45.6'

45.6'

45.6'

45.6'

45.6'

45.6'

45.6'

45.6'

3 STORY
BRICK & FRAME
DWELLING

161.89'

0.1 MILE TO INTX
S. WOLFE STREET

BE

OFF 0.2'

13.2'

STP

OFF 0.1'

STONE BORDER

BRICK WALK

0.3' BRICK
PLANTER

N 09°30'00" E

13.15'

66' R/W

0.7' BRICK WALL

CONC WALK

0.5' STONE CURB

WM

WM

WM

WM

WM

WM

WM

WM

WM

WM

WM

WM

WM

WM

WM

WM

WM

WM

WM

WM

WM

SOUTH ST. ASAPH STREET

MONUMENT LINE

PLAT

SHOWING HOUSE LOCATION ON
THE PROPERTY LOCATED AT

#310 SOUTH SAINT ASAPH STREET

(INSTRUMENT NO. 060001101)

CITY OF ALEXANDRIA, VIRGINIA

SCALE: 1" = 20'

JULY 09, 2015

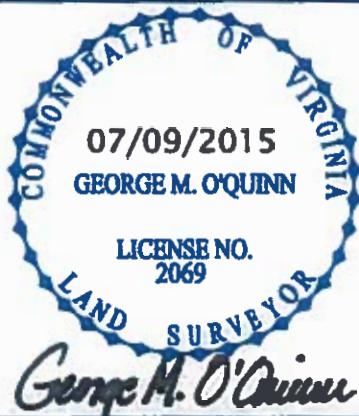
TURN LANE
FOR DRAWINGS

I HEREBY CERTIFY THAT THE POSITIONS OF
ALL THE EXISTING IMPROVEMENTS HAVE BEEN
CAREFULLY ESTABLISHED BY A CURRENT FIELD
SURVEY AND UNLESS SHOWN THERE ARE NO
VISIBLE ENCROACHMENTS AS OF THIS DATE:

THIS PLAT IS SUBJECT TO
RESTRICTIONS OF RECORD.

A TITLE REPORT WAS NOT FURNISHED.

NO CORNER MARKERS SET.



Ordered by:

Land, Carroll & Blair, P.C.

524 King Street
Alexandria, Virginia 22314
703-836-1000



DOMINION

Surveyors
Inc.®

8808-H PEAR TREE VILLAGE COURT
ALEXANDRIA, VIRGINIA 22309
703-619-6555
FAX: 703-799-6412