



POTOMAC YARD METRORAIL STATION DESIGN

City Council Update
May 24, 2016

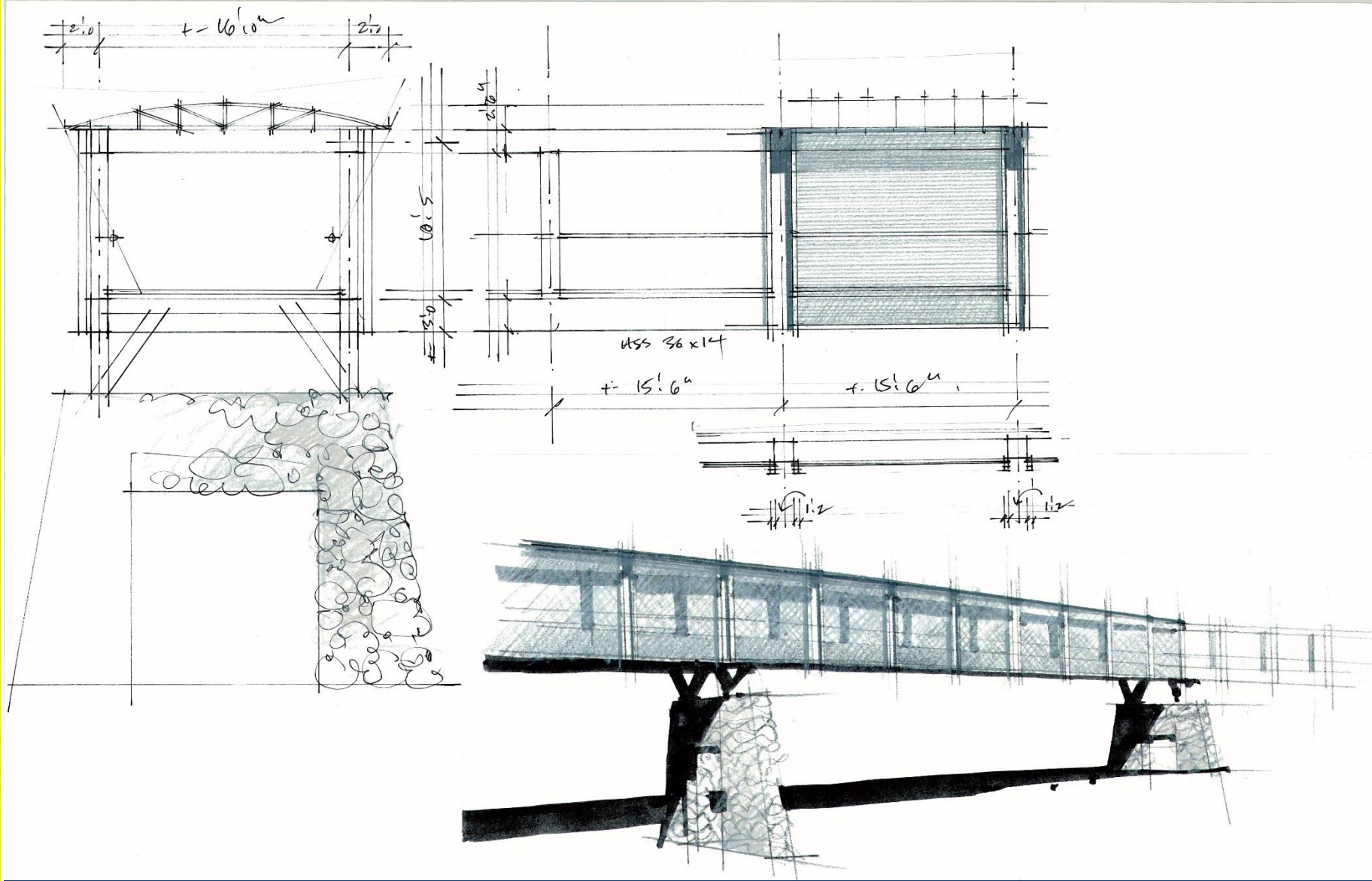




AGENDA

- Station Design Update
- Pedestrian Bridge - Hours of Operation
- Final EIS Update
- Upcoming Meetings
- Next Steps

PEDESTRIAN BRIDGE CONCEPT





ENTRANCE PAVILION



South Pavilion View from Glebe Rd



South Pavilion View from Southwest

MATERIAL PALETTE: FINISH MATERIALS



Glass



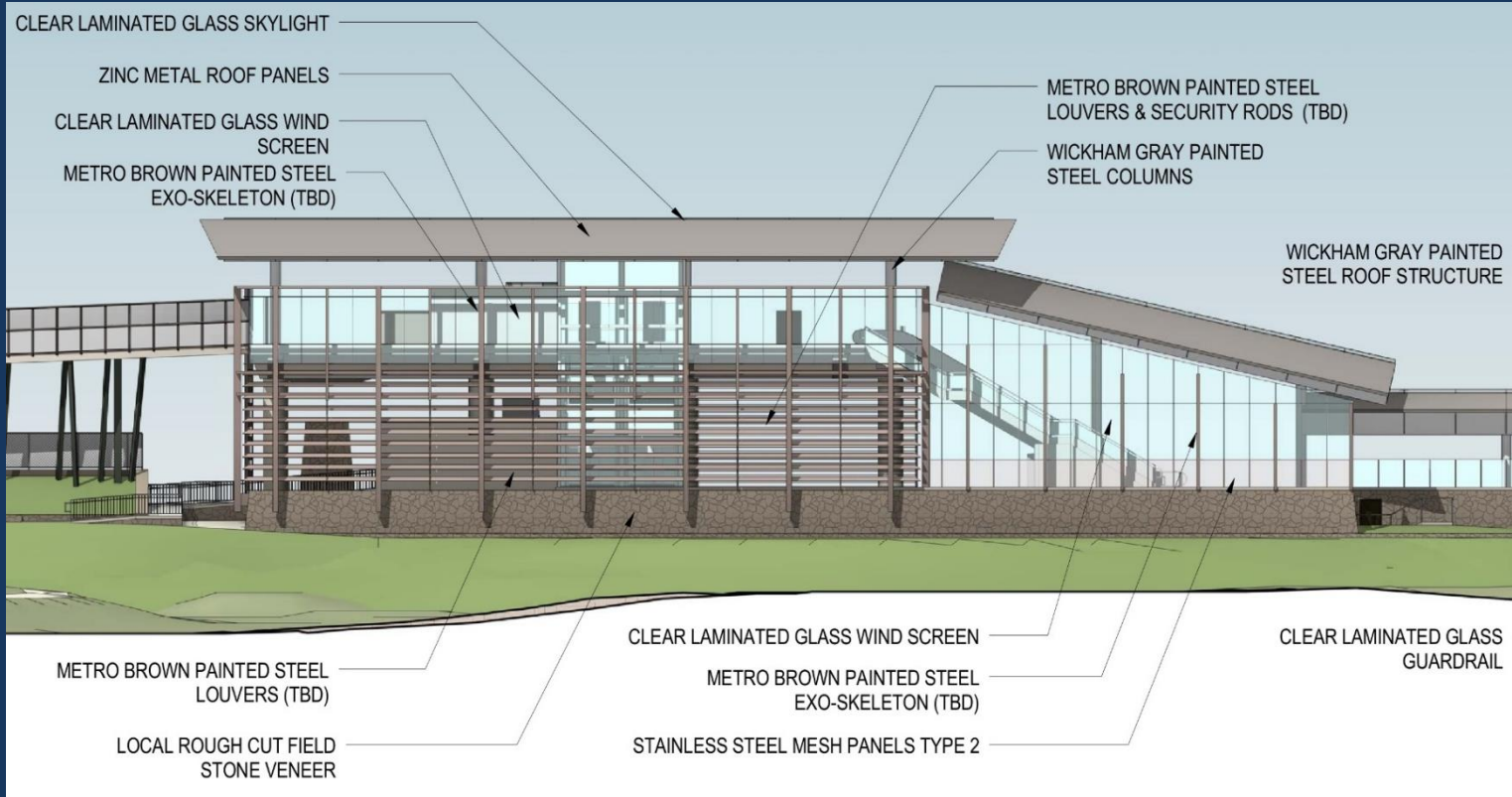
Zinc



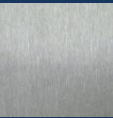
Weathered Stl



Metro Brown



Light Gray



Stainless



Mesh 2



Stone



PEDESTRIAN BRIDGE - HOURS OF OPERATION

	Bridge open 24/7	Bridge open when station is open
Community Concerns	Security	Access
Maintenance Responsibilities	City	WMATA
Hours of Operation	24/7	Closed 12AM - 5AM and 3AM - 7AM



FINAL EIS UPDATE

- Final EIS currently being finalized
- Final EIS will be circulated for public review and comment for 30 days (anticipated June 2016)
- Final EIS includes proposed mitigation
- Public comments may affect mitigation commitments formalized in Records of Decision (anticipated Summer 2016)



UPCOMING MEETINGS

Community Discussions:

- Open Houses
 - June 2, 2016 (6:30 - 8:30 p.m., Charles Houston)

Public Hearings:

- Board of Architectural Review (BAR): May 18, 2016
- Planning Commission: June 7, 2016
- City Council: June 16, 2016



NEXT STEPS

- Continued Community Engagement
- Continue to develop construction impact mitigation elements
- Develop RFP documents for D/B contract
- Finalize EIS
- DSUP Approval Process
 - PC and CC Public Hearings in June 2016



QUESTIONS?

**For more information, visit:
www.alexandriava.gov/PotomacYard**