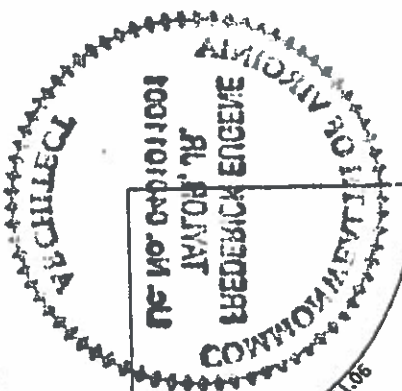


Attachment 1 Encroachment Plat

COPYRIGHT BY DOMINION SURVEYORS, INC. THE INFORMATION CONTAINED ON THIS DOCUMENT MAY NOT BE COPIED, REPRODUCED OR ALTERED IN ANY FORM WITHOUT PERMISSION IN WRITING FROM THE COPYRIGHT OWNER.

- NOTES: 1. FENCES ARE FRAME.
2. UTILITIES ARE UNDERGROUND.



I HEREBY CERTIFY THAT THE POSITIONS OF ALL THE EXISTING IMPROVEMENTS HAVE BEEN CAREFULLY ESTABLISHED BY A CURRENT FIELD SURVEY AND UNLESS SHOWN THERE ARE NO VISIBLE ENCROACHMENTS AS OF THIS DATE:

THIS PLAT IS SUBJECT TO RESTRICTIONS OF RECORD. A TITLE REPORT WAS NOT FURNISHED. NO CORNER MARKERS SET.

COMMONWEALTH OF VIRGINIA
01/16/2014
GEORGE M. OQUINN
LICENSE NO. 2069
LAND SURVEYOR
George M. O'Quinn

CASE NAME:
OLSON
CINDY COLUMBIN

DOMINION Surveyors Inc.
8808-H PEAR TREE VILLAGE COURT
ALEXANDRIA, VIRGINIA 22309
703-619-6555
FAX: 703-799-6412

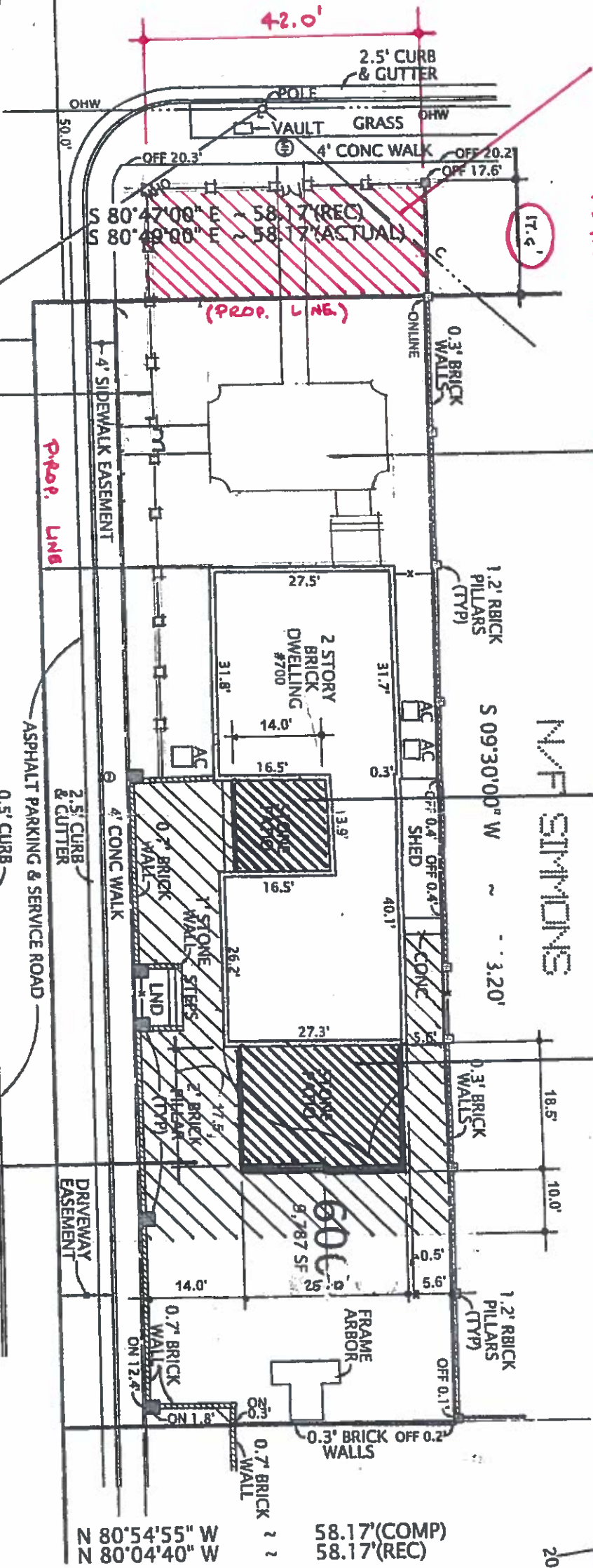
SHOWING HOUSE LOCATION ON LOT 600, BLOCK 1, SECTION ONE OF A PLAT OF CONSOLIDATION LOTS 16, 517, 518 & 10' ALLEY YATES GARDENS (DEED BOOK 1196, PAGE 381)
CITY OF ALEXANDRIA, VIRGINIA
SCALE: 1" = 20'
JANUARY 16, 2014

FRANKLIN STREET

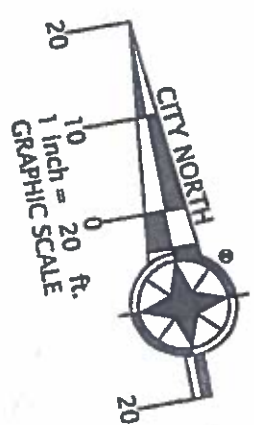
MONUMENT LINE

SOUTH PITT STREET

MONUMENT LINE



LIMITS OF DISTURBANCE:
NEW BUILDING FOOTPRINT: 661 SF
+ CONSTRUCTION PERIMETER: 1295 SF
TOTAL DISTURBED AREA: 1946 SF



700 SOUTH PITT ST.
PLAT 1" = 20'-0"