

City of Alexandria, Virginia

UNDERGROUND TRANSMISSION LINE & SUBSTATION WORKING GROUP RECOMMENDATIONS

City Council Legislative Meeting
May 10, 2016



ISSUE & RECOMMENDATION



- Consideration of a resolution that the City is strongly opposed to all above ground alignments
- That City Council adopt the resolution, receive and adopt the Working Group's recommendations as the City's position, and convey them to Dominion

WORKING GROUP MISSION & GOAL



■ **MISSION**

1. Examine impacts of alignments
2. Identify pros, cons and challenges
3. Consider other additional routes
4. Review PEPCO substation siting options

■ **GOAL**

- Provide staff with information needed for a memo to answer the four mission points outlined.

LOOKING AHEAD

- Role of the Working Group will change after SCC submission

WORKING GROUP ACTIVITIES



Met five times September-November 2014

Reviewed and/or Developed:

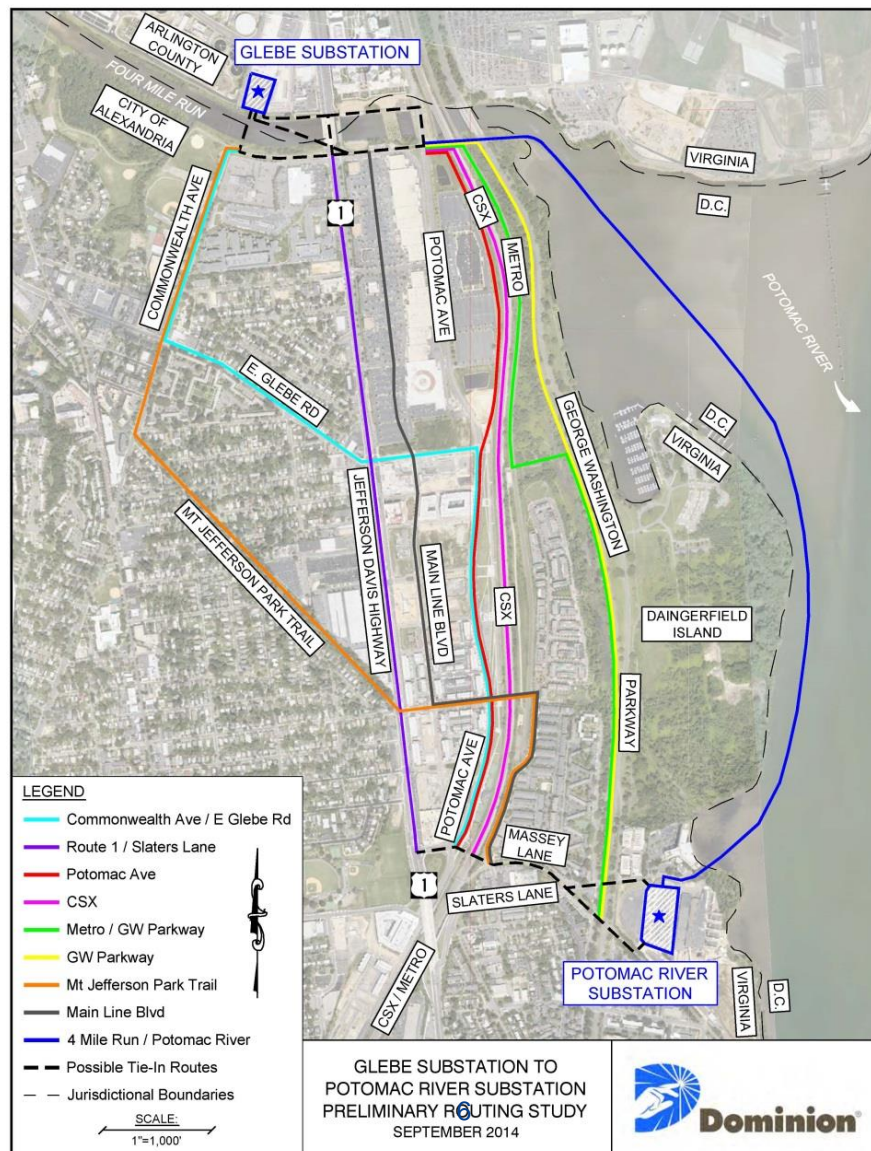
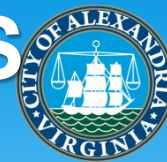
- Presentations from City staff, PJM, Dominion and Pepco
- Issue identification
- Routing Matrix, Alignment narratives
- Recommendations Memo

KEY WORKING GROUP RECOMMENDATIONS



- Oppose all overhead line options
- Oppose all *most objectionable* alignments
- Relocate the existing Potomac Yard North Substation to the Glebe Substation with lines underground
- Potomac River Substation design should:
 - Consider of future redevelopment of NRG
 - Minimize its Footprint
 - Be designed, screened in a manner appropriate for its prominent location at gateway to historic districts

ORIGINALLY-PROPOSED ALIGNMENTS



ALIGNMENT ASSESSMENT



LEAST OBJECTIONABLE:

- CSX: CSX/DRCA
- Four Mile Run/Potomac River: Four Mile Run/Potomac River GW Parkway
- GW Parkway: Metro/GW Parkway
- Potomac River
- Potomac Avenue

MOST OBJECTIONABLE:

- Overhead Transmission Line
- Mount Jefferson Park Trail
- Mount Jefferson Park Trail Alternate
- Mainline Blvd.
- Route 1/Slaters Lane
- Commonwealth Ave/East Glebe Road

LEAST OBJECTIONABLE ALIGNMENTS



QUESTIONS & DISCUSSION



- The City wishes to thank Working Group members for their ongoing time and effort