



# POTOMAC YARD METRORAIL STATION DESIGN

City Council Update  
April 26, 2016





# AGENDA

- Station Design Update
- Construction Impacts
- Final EIS Update
- Next Steps



# CONTEXT : LANDSCAPING



Elevation view looking west



# CONTEXT : LANDSCAPING



View from Parkway Southbound Lane with Landscape



# PEDESTRIAN BRIDGE - OPTION 1 - TRUSS

North mezzanine looking southwest



*PROPOSED PLANTINGS (TREES, SHRUBS, GRASSES PROVIDED FOR WETLAND RESTORATION AND LANDSCAPE MITIGATION) HAVE BEEN OMITTED IN THEIR ENTIRETY TO SHOW STATION FORM*



# PEDESTRIAN BRIDGE - OPTION 2 - ARCH

North mezzanine looking southwest



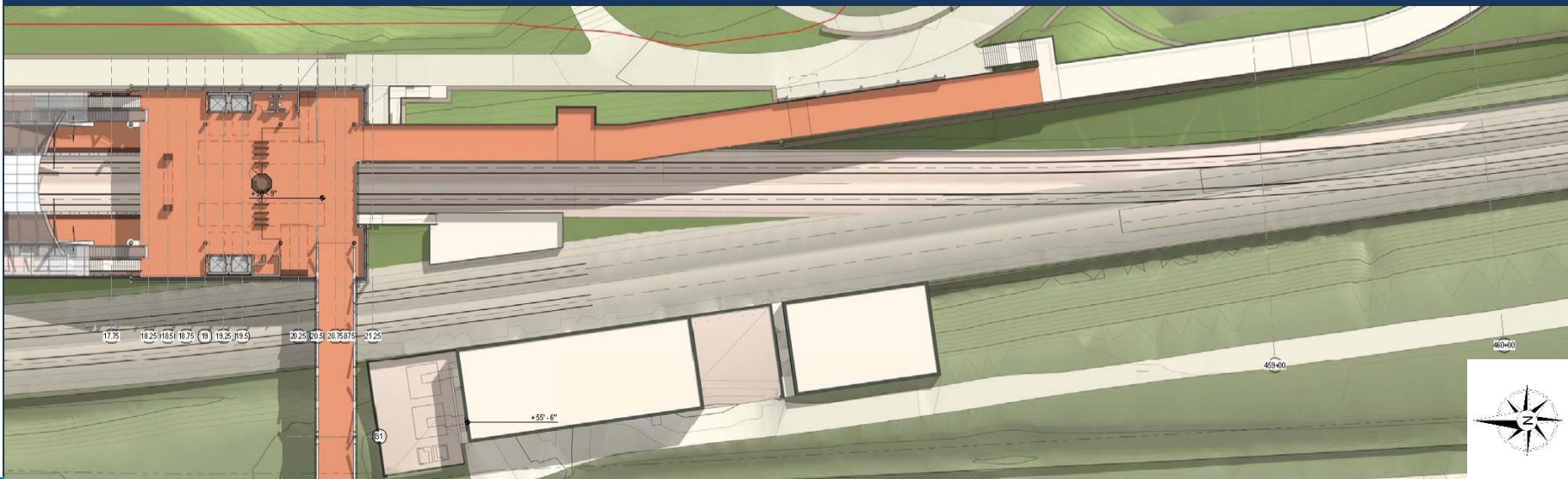
# PEDESTRIAN BRIDGE - EAST VIEW



View from Parkway Northbound Lane



# EAST RAMP AND NEW AC BUILDING





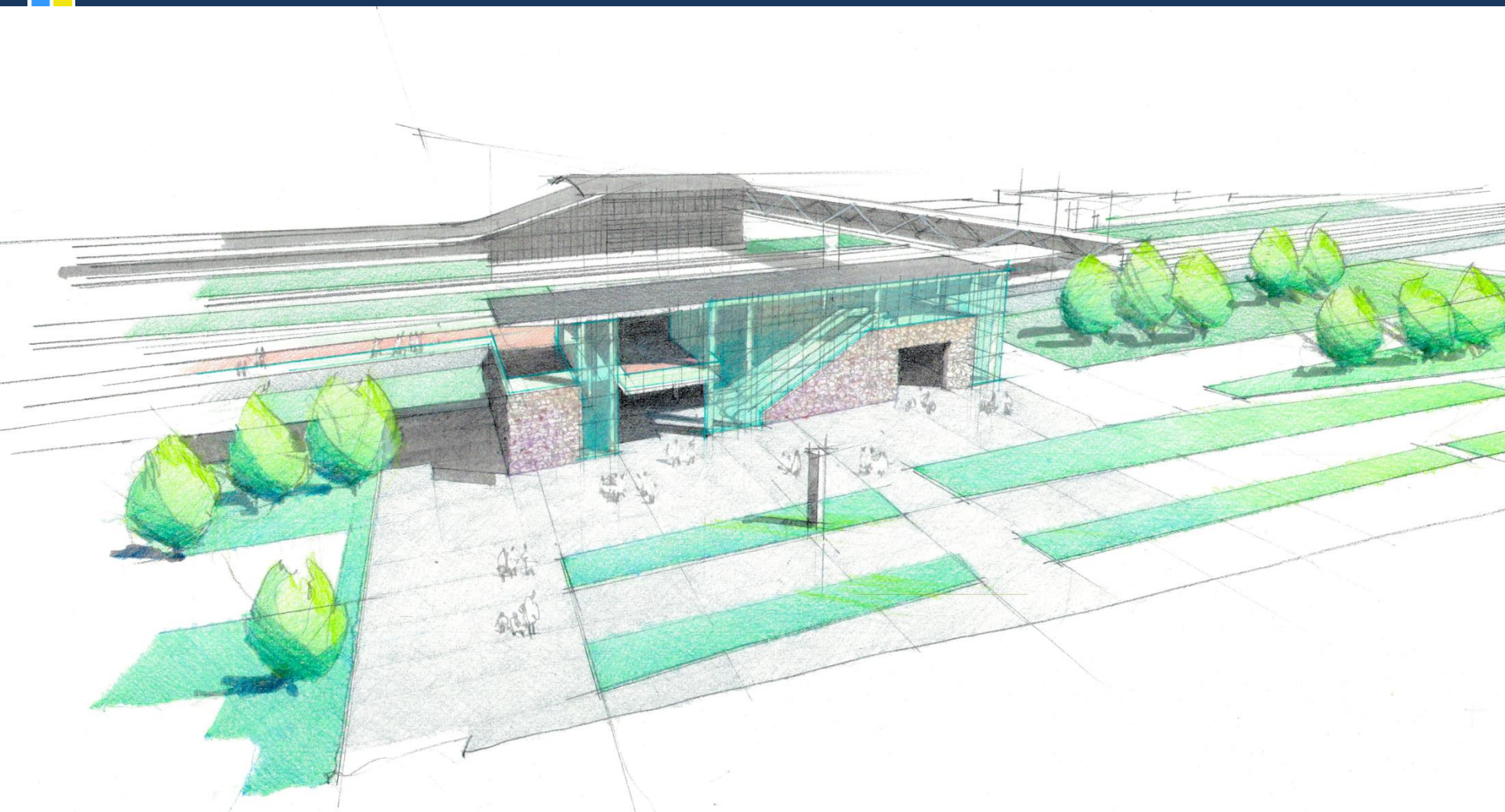
# EAST BICYCLE / PEDESTRIAN RAMP: WITH LANDSCAPING



Aerial view looking southwest



# WESTERN PAVILION



View looking east (at East Glebe Road)



# PROJECT IMPACTS

## CONCERNS

- Construction Traffic & Parking
- Contaminated Soils
- Construction Noise
- Night Work
- Damage to Homes
- Temporary Loss of Amenities
- Security Concerns During and After Construction

## POTENTIAL MITIGATION

- Restrict Hours, Bus Workers, Secure Site, Inspector Presence, Time Restrictions
- Testing of Materials Prior to Removal, Ensure Proper Handling
- Noise Mitigation
- Provide Advance Notice, Minimize
- Pre-construction Home Inspections
- Work with Community to Relocate
- Secure Construction Site, Secure Access When Station Closes





# FINAL EIS UPDATE

- Latest round of comments from FTA and NPS received April 18
- Final EIS will be circulated for public review and comment for 30 days (anticipated Spring 2016)
- Final EIS includes proposed mitigation
- Public comments may affect mitigation commitments formalized in Records of Decision (anticipated Summer 2016)



## NEXT STEPS

- Continued Community Engagement
- Develop construction impact mitigation elements
- Develop RFP documents for D/B contract
- Finalize EIS
- BAR Work Sessions - Concept Approval
- DSUP Approval Process
  - PC and CC Public Hearings in June 2016



# QUESTIONS?

**For more information, visit:  
[www.alexandriava.gov/PotomacYard](http://www.alexandriava.gov/PotomacYard)**