



POTOMAC YARD METRORAIL STATION DESIGN

City Council Update
March 29, 2016





AGENDA

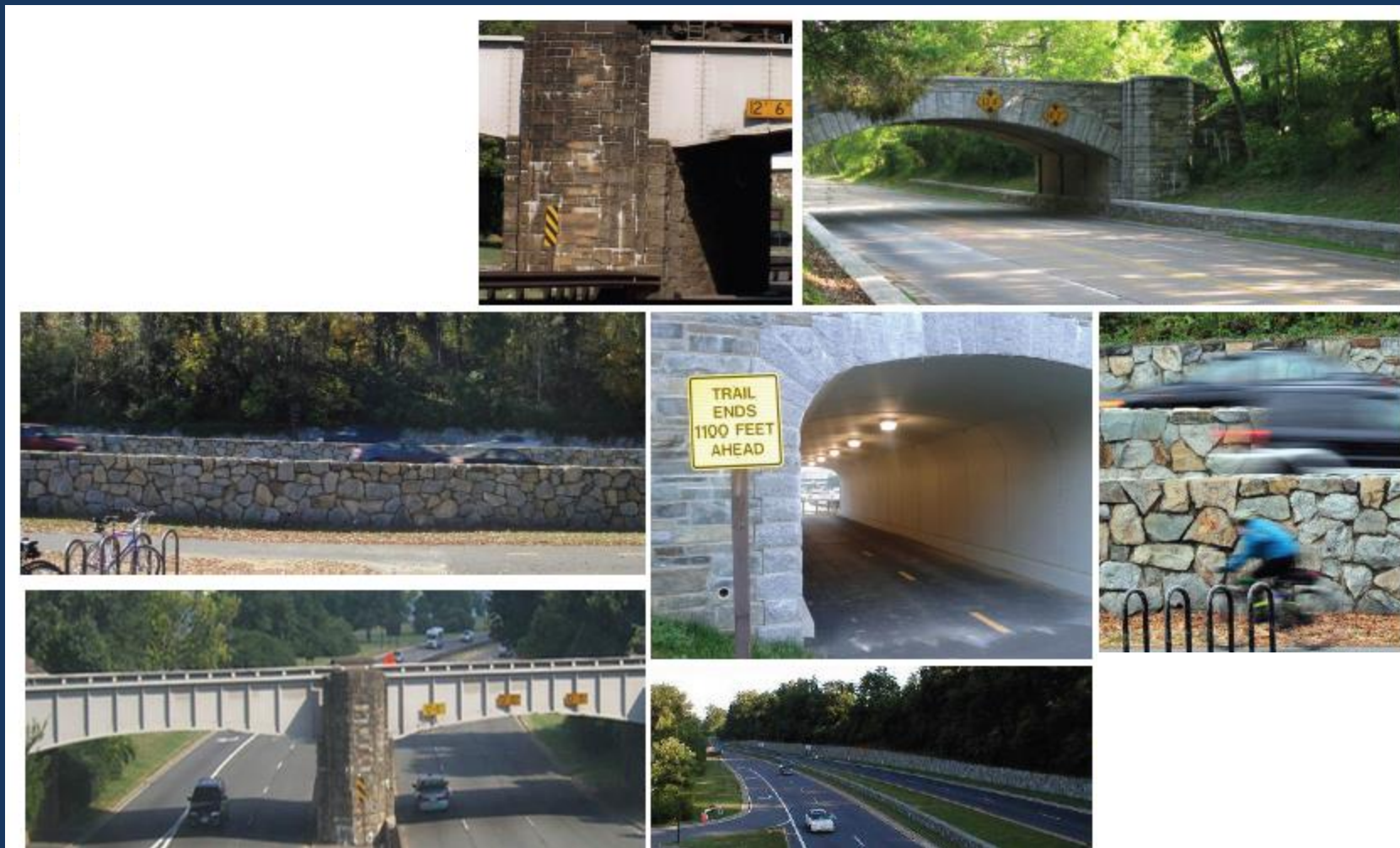
- Station Design Update
- Construction Impacts
- Final EIS Update
- Next Steps



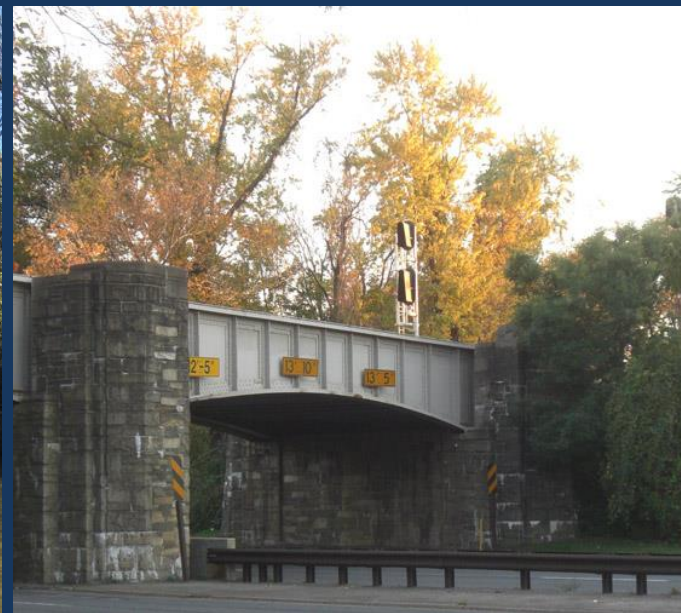
CONTEXT



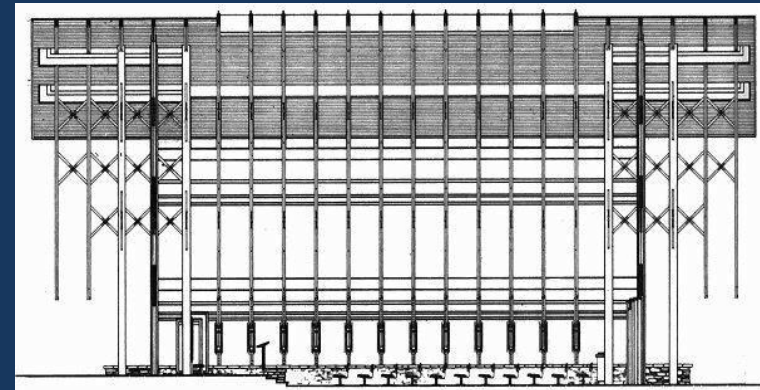
CONTEXT

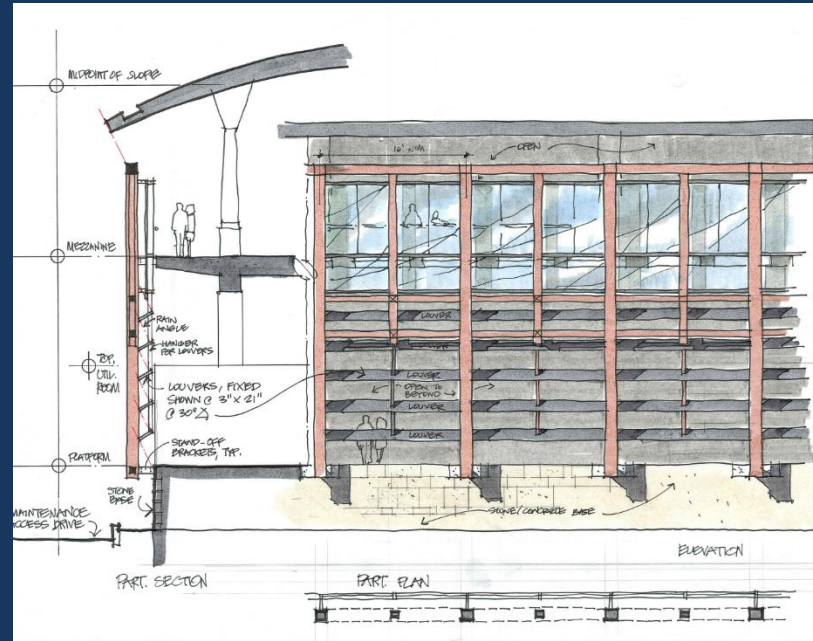
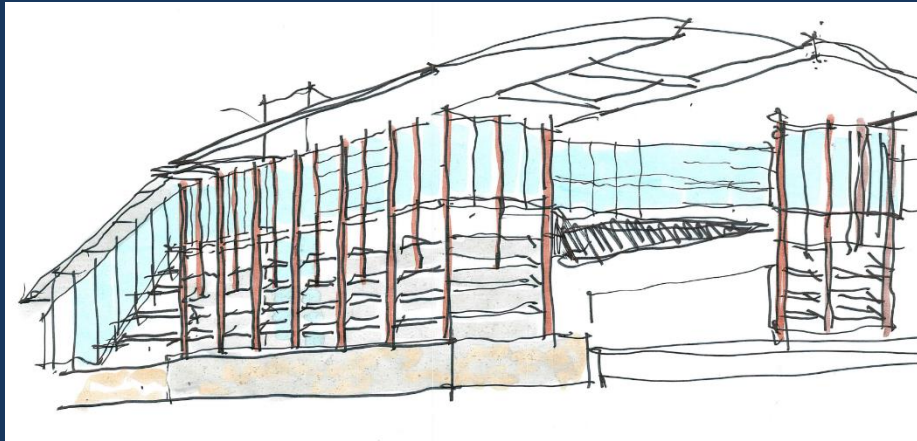


CONTEXT



STATION DESIGN - PRECEDENTS

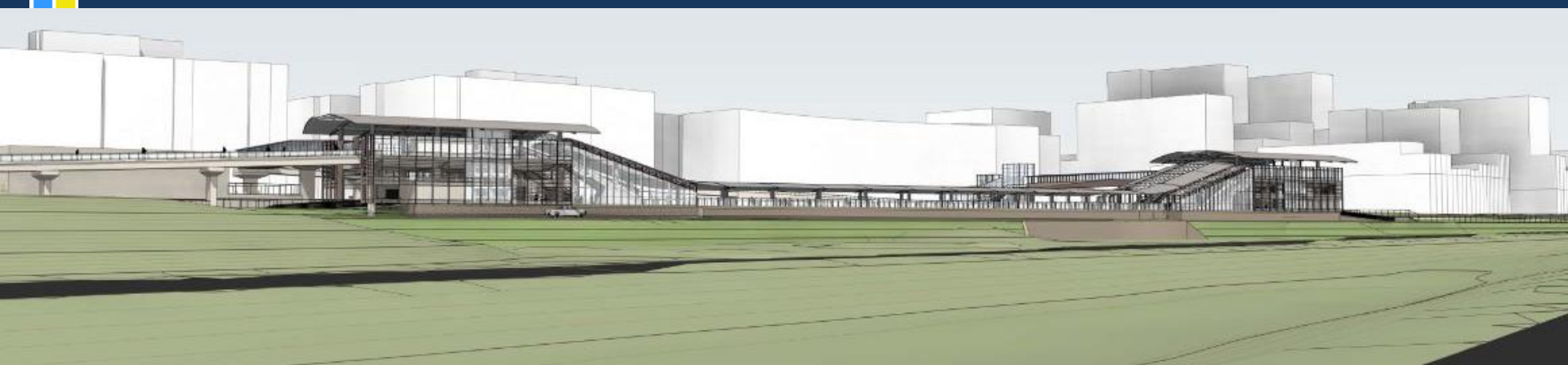




STATION DESIGN - OPTION 1

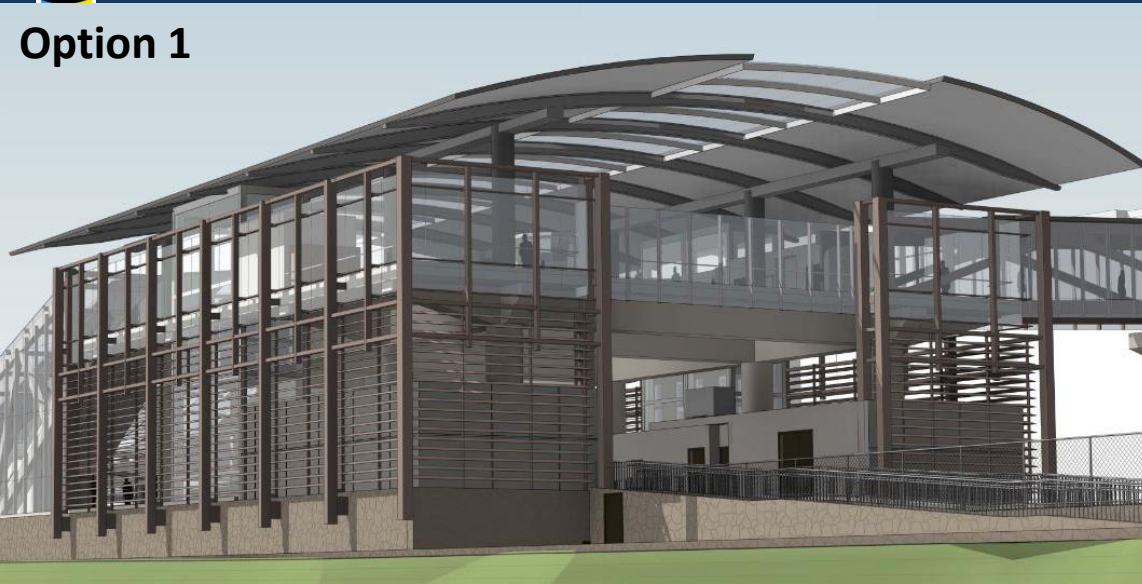


STATION DESIGN - OPTION 2

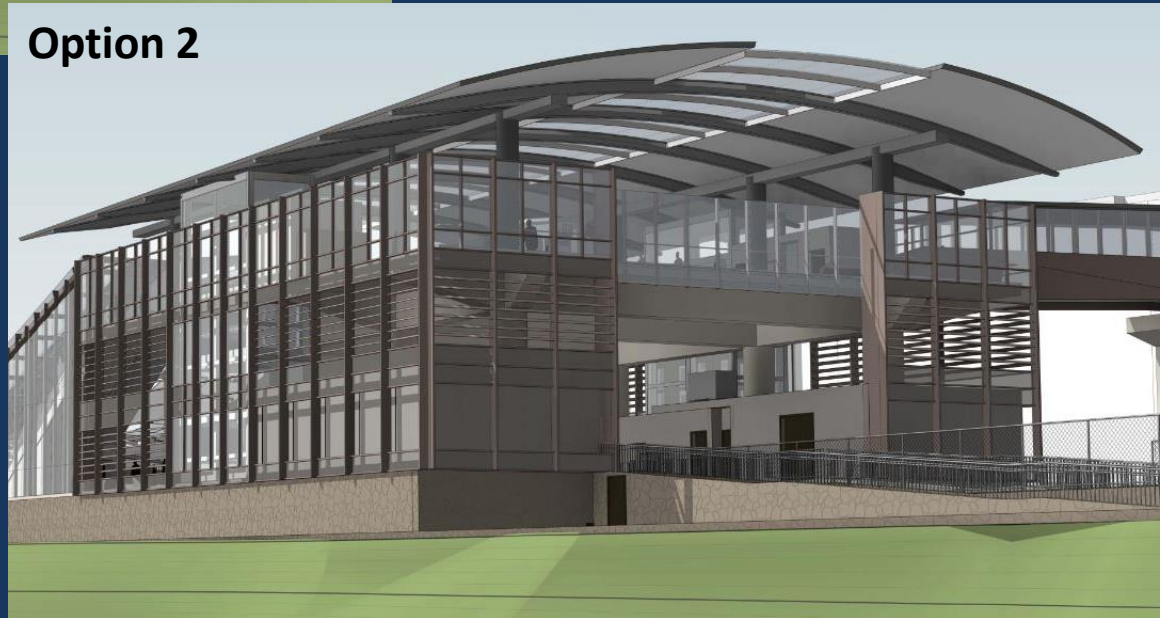


COMPARISON OF OPTIONS 1 AND 2

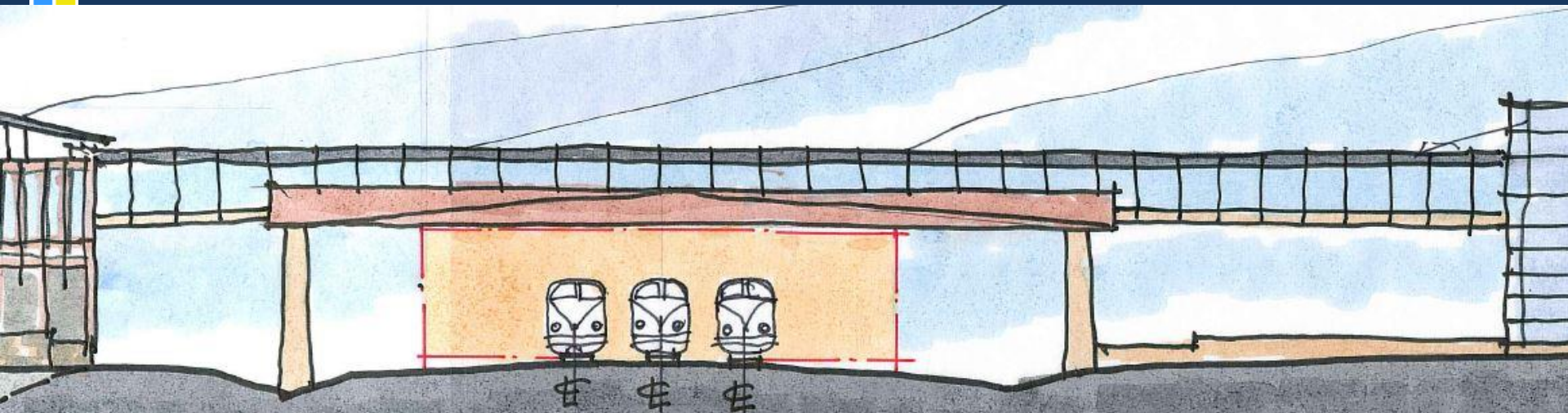
Option 1



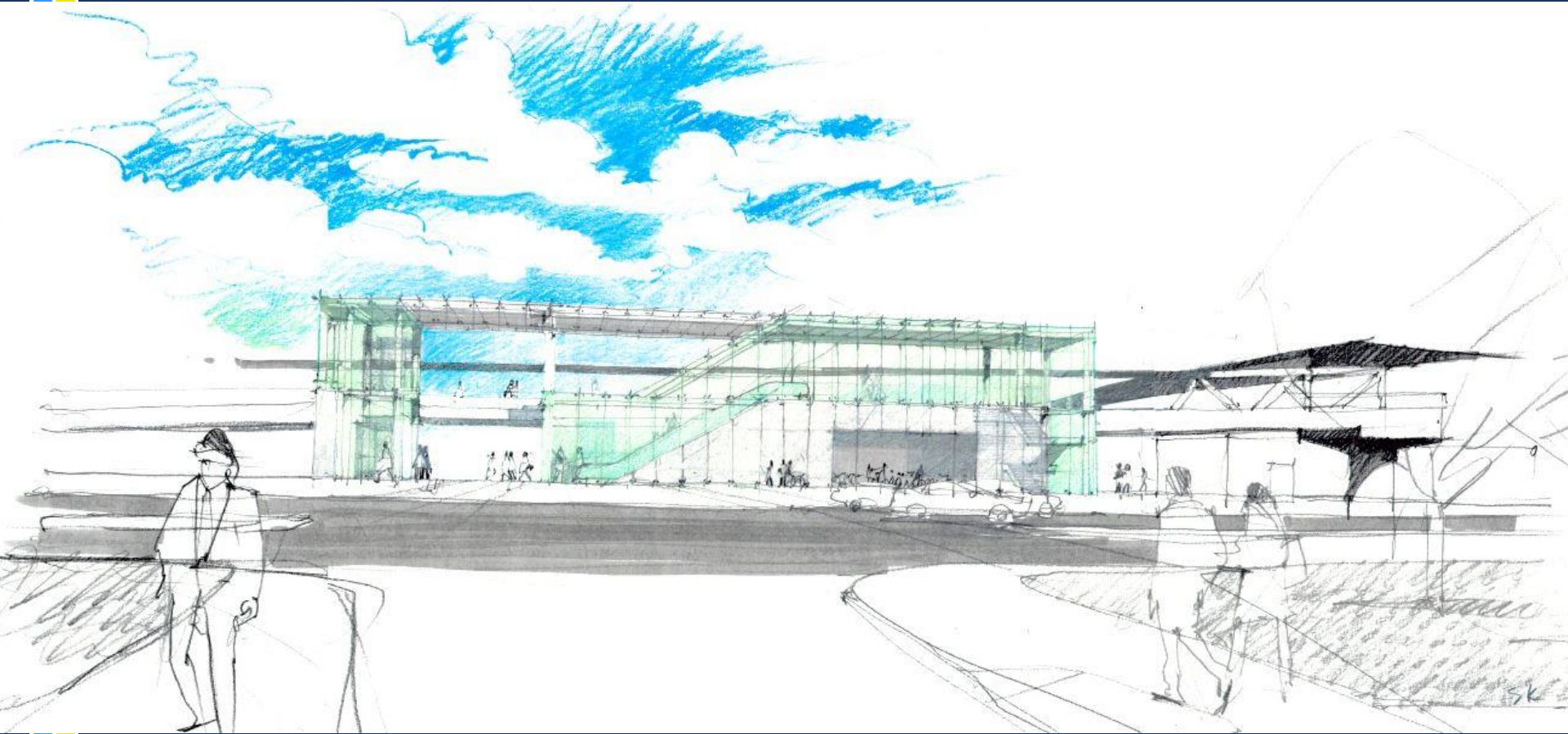
Option 2



PEDESTRIAN BRIDGES - CONCEPTS



ENTRANCE PAVILION- CONCEPTS (EAST GLEBE)



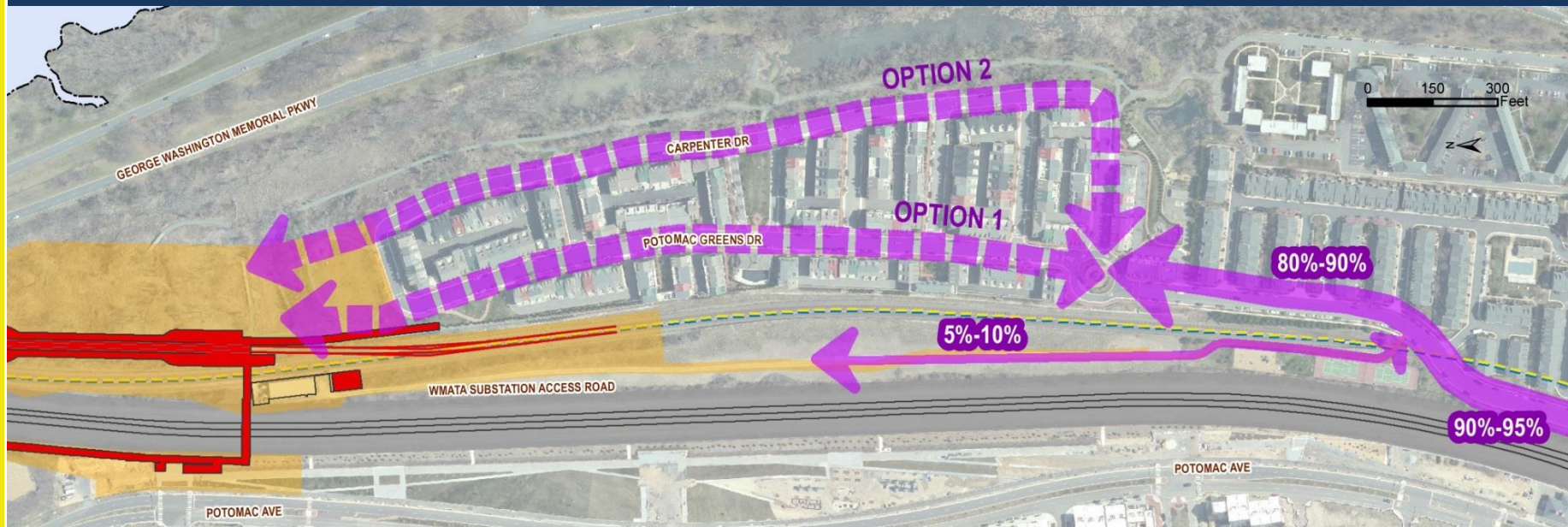
CONSTRUCTION ACCESS

- The following graphics are approximations of the breakdown by route of the amount of anticipated construction traffic.
- To reduce traffic to and from the station site, a location is being sought for construction worker parking.
- This off-site parking would be required for all construction workers, who would be bused to the site.



CONSTRUCTION ACCESS

- Construction traffic traveling north on Potomac Greens Drive has 2 options once it reaches the traffic circle at the intersection of Potomac Greens Drive and Carpenter Road: Potomac Greens Drive or Carpenter Road.
- Community input is being sought on the selection of the preferred option.
- The landscaped area of the traffic circle will be removed before construction and restored at the end of construction.
- The 2 playgrounds will be relocated and the tennis courts will be closed throughout the period of construction.

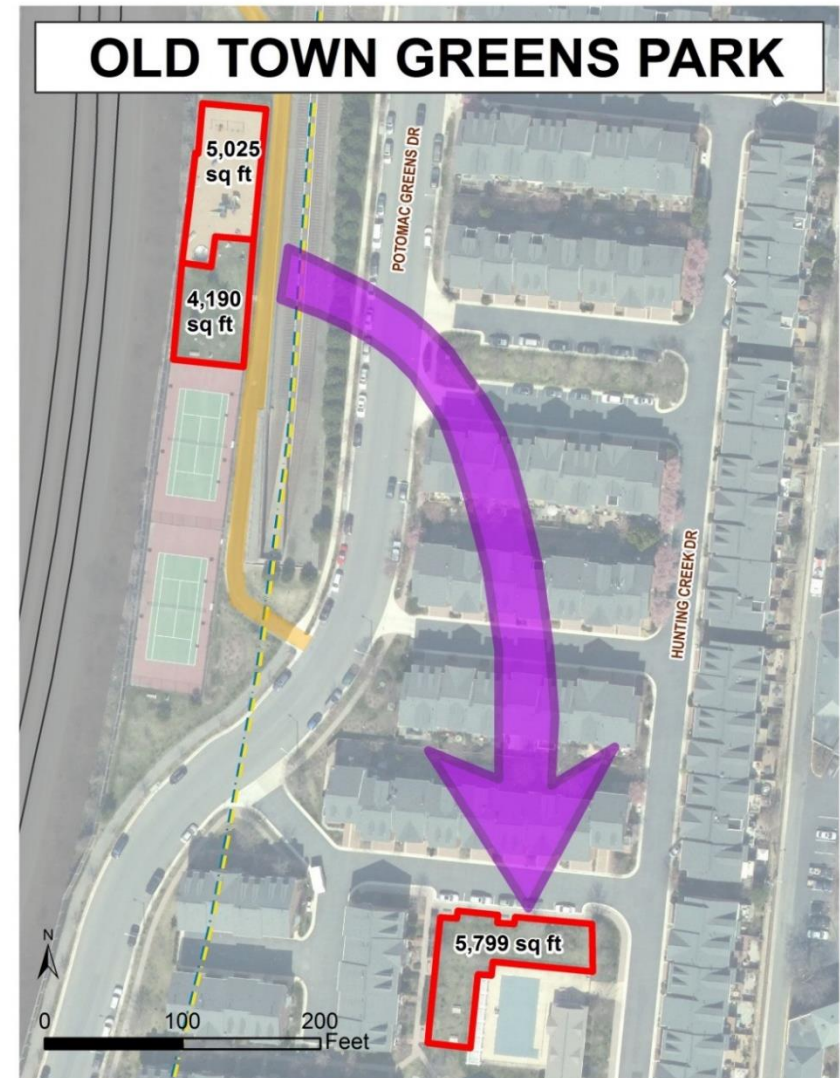


CONSTRUCTION IMPACTS - TEMPORARY PLAYGROUND RELOCATION

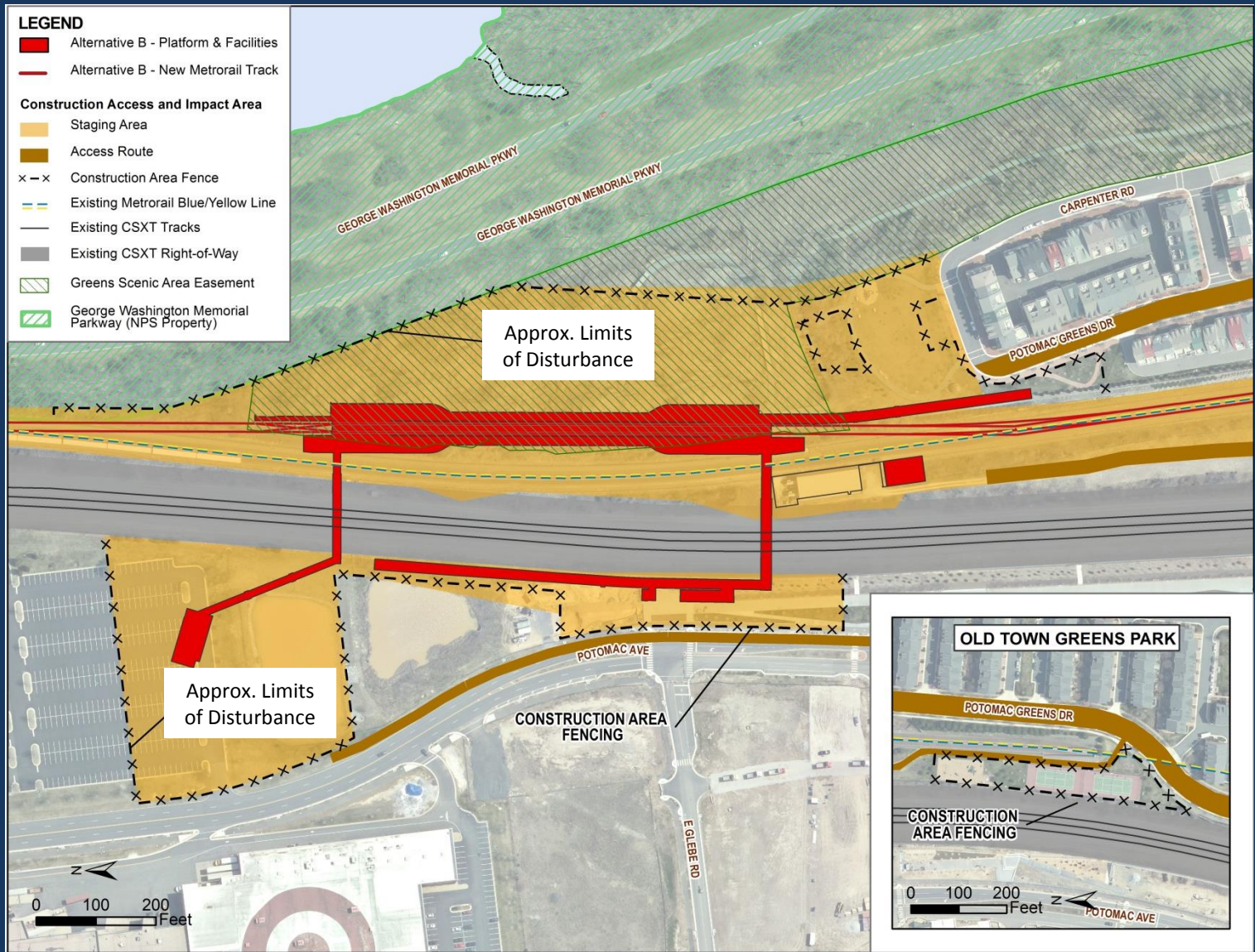
POTOMAC GREENS PARK



OLD TOWN GREENS PARK



APPROXIMATE LIMITS OF DISTURBANCE





CONSTRUCTION IMPACTS

- The close proximity of the station to the existing tracks will require the performance of work during overnight hours during the week.
- Additionally, some work will require that the Blue & Yellow Line service be suspended during weekends for activities that will take place around the clock.
- The number of nights and weekends that work will be performed will not be known until the contractor is selected.



CITY OVERSIGHT

- Any construction activities occurring during “off” hours will require special permits and will have to comply with City processes prior to beginning.
- The City will have a full time employee located on site who will oversee activities to ensure that the community impacts are minimized to the fullest extent possible.
- The City and WMATA personnel will keep the community up to date on construction activities and will be readily available to answer questions and address concerns or complaints throughout the duration of construction.



FINAL EIS UPDATE

- Second round of comments from FTA and NPS received March 15
- Final EIS will be circulated for public review and comment for 30 days (anticipated Spring 2016)
- Final EIS includes proposed mitigation
- Public comments may affect mitigation commitments formalized in Records of Decision (anticipated Summer 2016)



NEXT STEPS

- Refine and Finalize concepts
 - DSUP process: June 2016 public hearing
- BAR Work Sessions
- Finalize EIS
- Develop RFP documents for D/B contract
- Develop construction impact mitigation elements
- Develop concept level cost estimate
- Update Boards and Commissions



QUESTIONS?

**For more information, visit:
www.alexandriava.gov/PotomacYard**