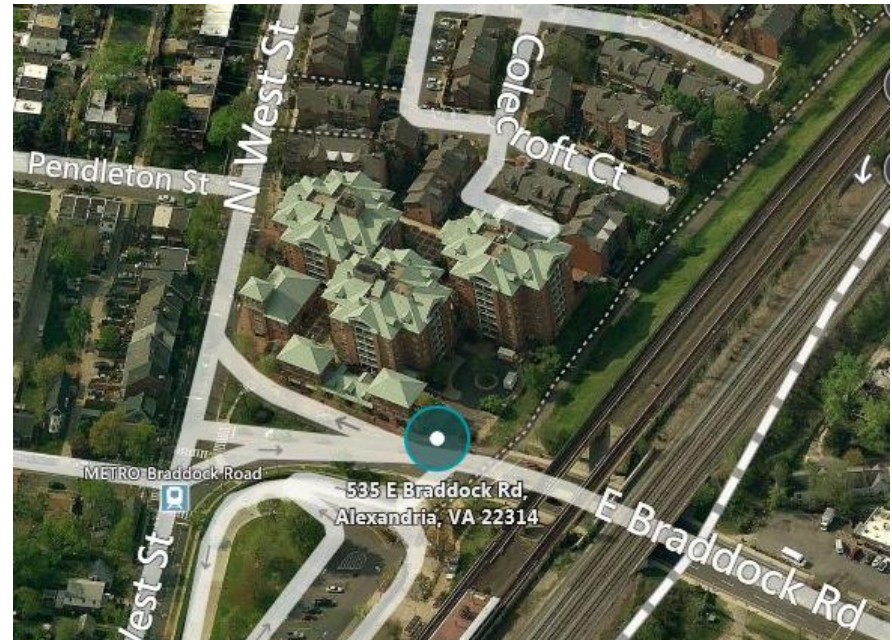


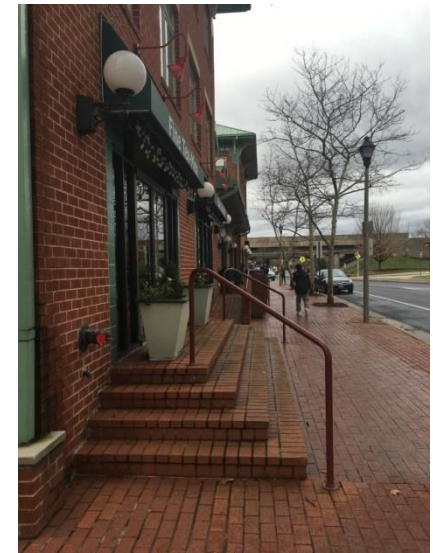
SUP#2015-0130 ENC#2015-0007

535 East Braddock Road

- SUP request to amend SUP#2012-0039 for 12 additional outdoor seats and for a three-space parking reduction
- Encroachment request to accommodate expanded outdoor dining area



Existing site views

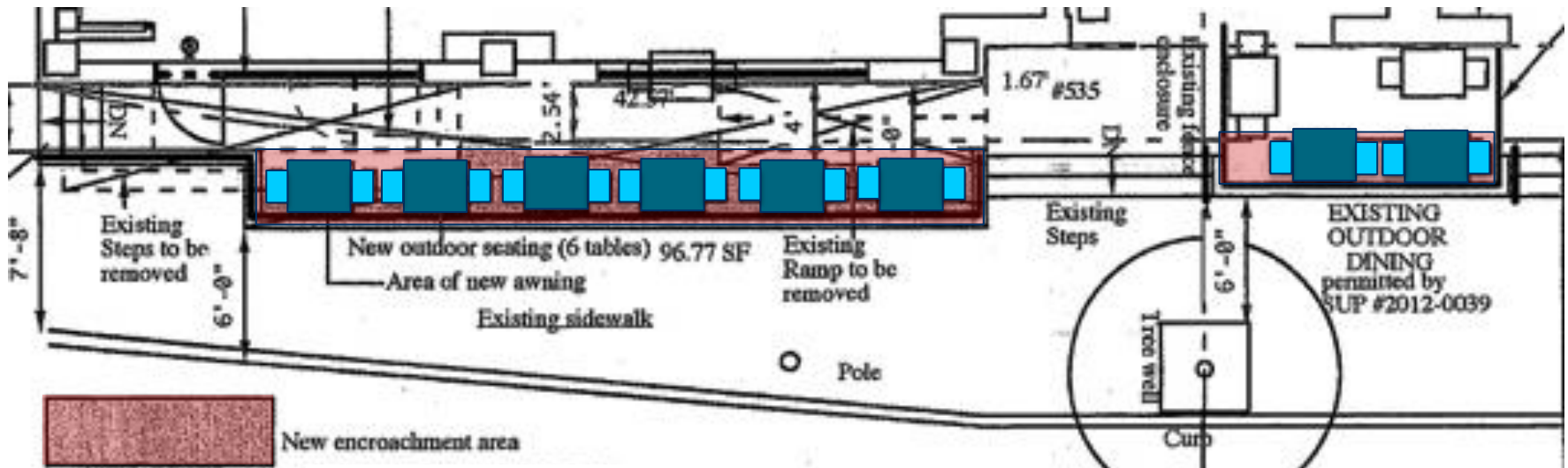


Proposed reconstruction
in encroachment area

Creates 22-seat outdoor
dining area



Proposed Encroachment Areas



Staff recommends approval

- Encroachment
- Twelve additional outdoor seats
- Parking reduction

