

Art and History Waterfront Report

Art and History Waterfront Plans
Implementation Committee



BIRD'S EYE VIEW OF ALEXANDRIA, VA.

Bird's Eye View of Alexandria, Virginia

Charles Magnus, publisher, circa 1863

Goals

- Tell the story of the waterfront in art and words.
- Create an authentic waterfront, grounded in the City's history.
- Make Alexandria widely known as an arts and history destination.
- Preserve the shoreline as a vibrant waterfront that lives in the present and vividly expresses the past.

Key Elements of the Waterfront

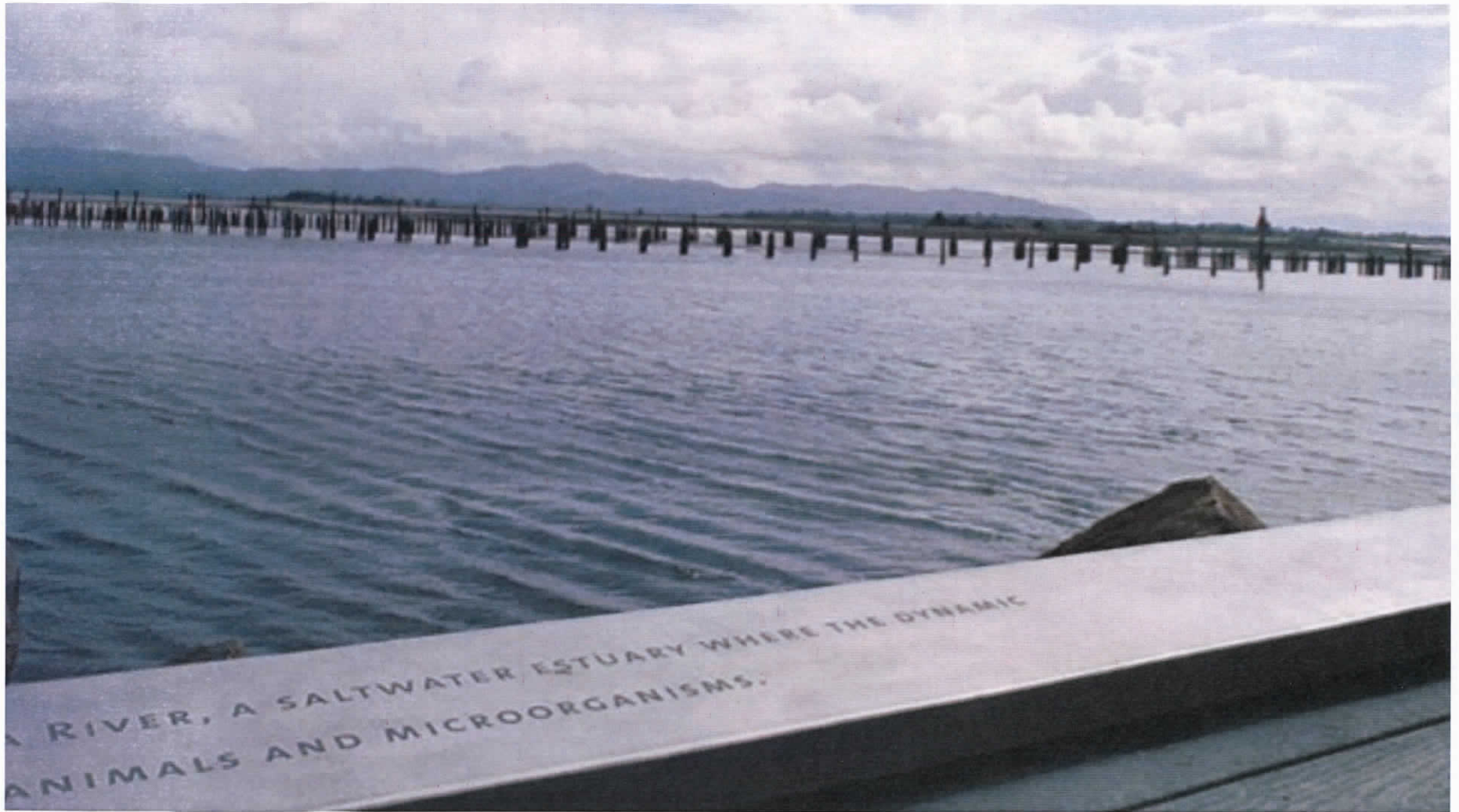
1. Pedestrian Path
2. Cultural Areas
3. Thematic Walks
4. Cultural Anchors
5. Living Shoreline

1. Pedestrian Path



Establish the Pedestrian Path as the unifying element of the Waterfront

Confluence Project, Maya Lin, Cape Disappointment, Washington



Inscribe quotations of historic relevance on the Pedestrian Path: Ensure that all aspects along the path-art, architecture, landscaping, signage-tell the story of the waterfront: its history, its inhabitants and its resources

Confluence Project, Maya Lin, Cape Disappointment, Washington



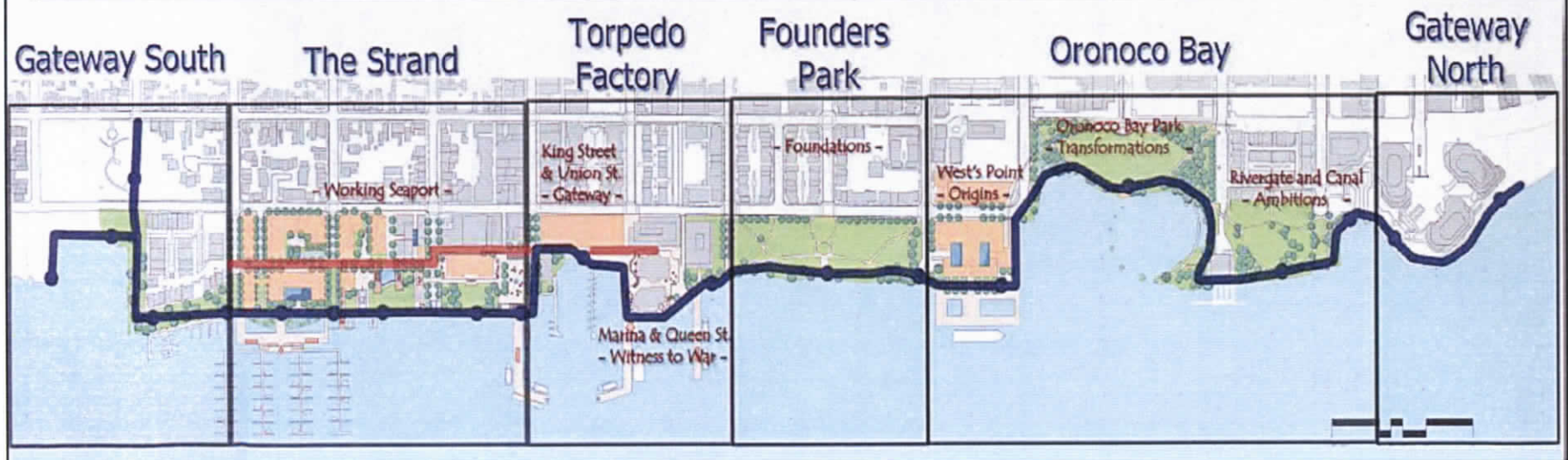
Lighting should be energy-efficient and uniform as to type, size, wattage, and location

Holmbridge Footbridge to the Hunter Museum, Chattanooga, TN

2. Cultural Areas



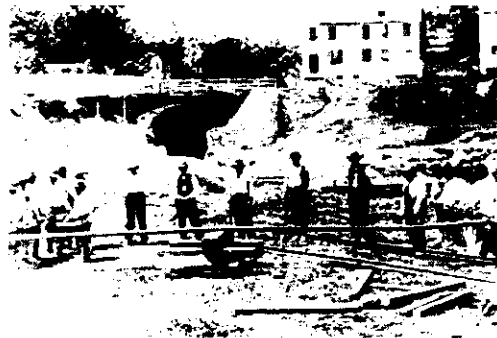
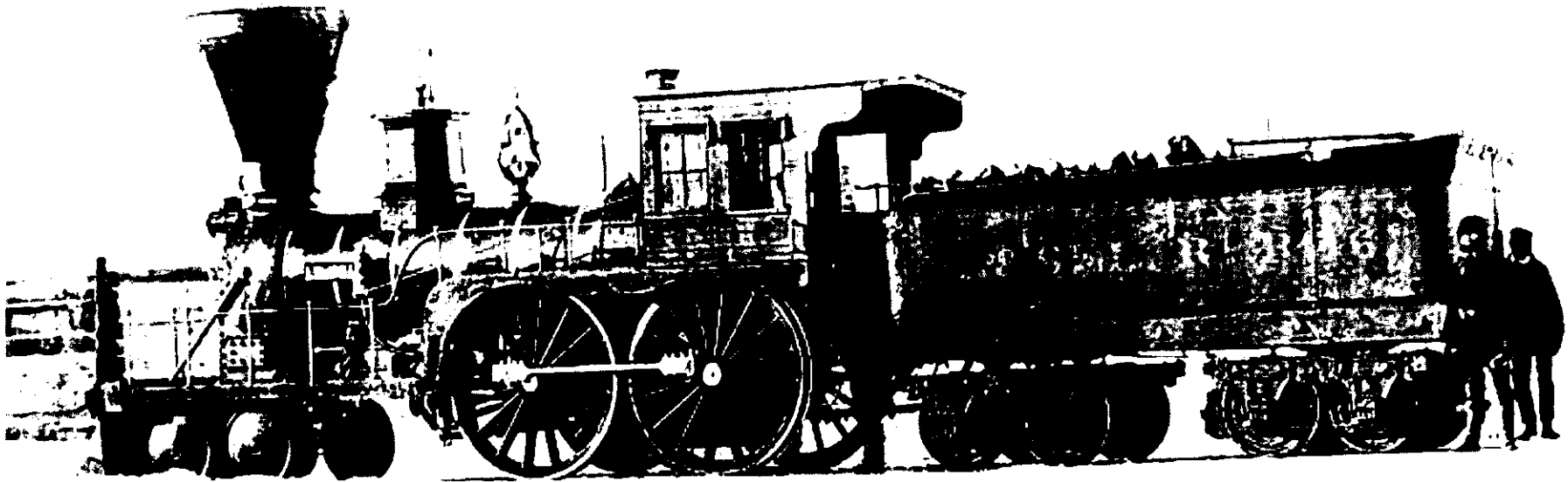
Working Seaport Gateway Witness to War Foundations Origins Transformations Ambitions



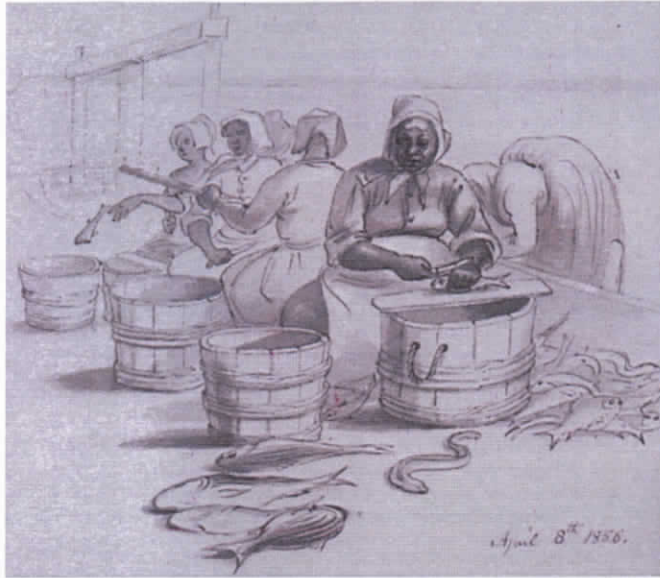
Tell the narrative of Alexandria by emphasizing the Cultural Areas along the waterfront

“The first locomotive belched smoke and cinders and the shrill of its whistle could be heard as it chugged down Union Street to the Wilkes Street tunnel”

Seaport Saga by William F. Smith and T. Michael Miller



Workers straightening the rails for the Wilkes Street tunnel,
1856, National Archives



Recall the history of Founders Park by recognizing Fishtown and the lumberyard that were there



Re-establish the historic Ralph's Gut in which plants, rocks, and water interact in a natural way



Design a welcoming symbol for Alexandria for the base of King Street

King Street Ferry Arch, Alexandria Library, William Smith Collection



Alexandria's Wayfinding System



Furnishings such as benches, tables and trash containers should be of artistic design

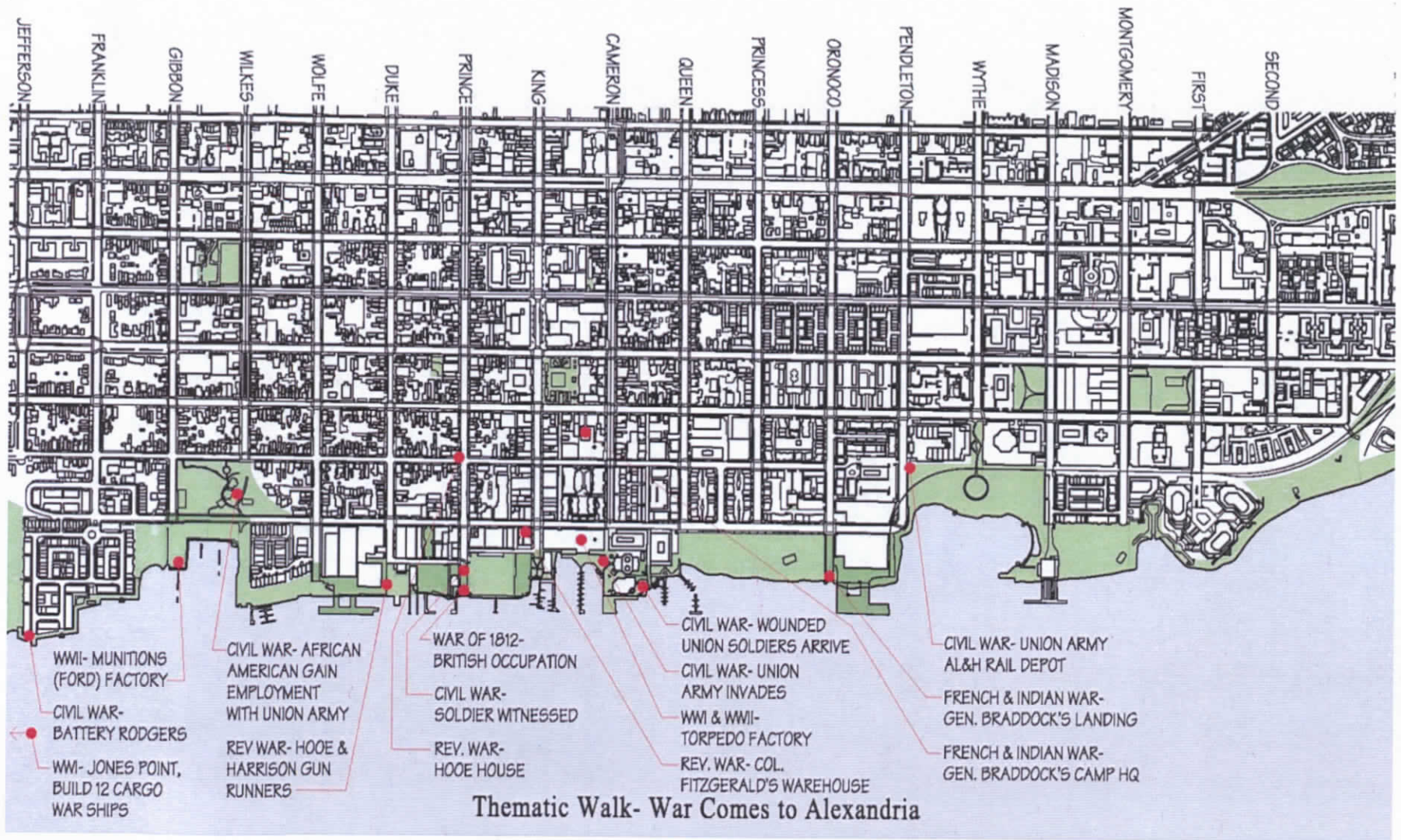
Bench by Jeppe Hein

3. Thematic Walks

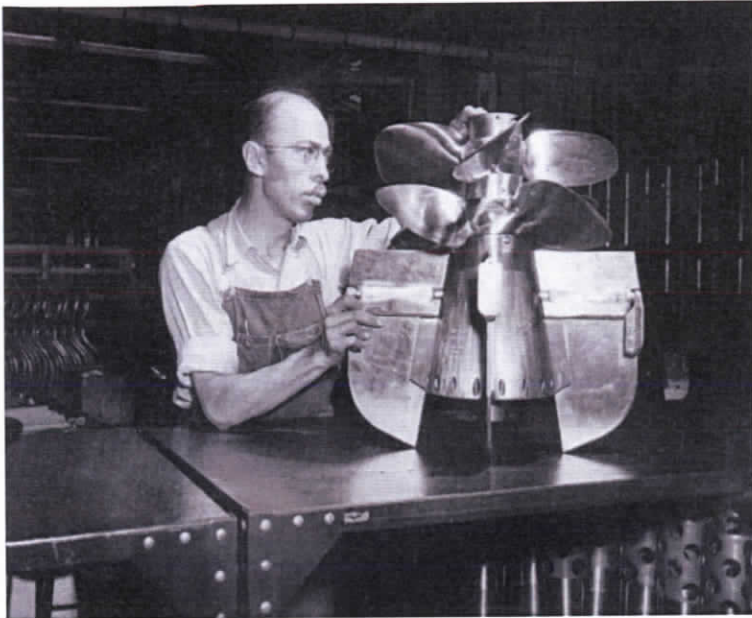
1

2

3



Example of a Thematic Walk- War Comes to Alexandria



Torpedo factory Worker with propeller: Alexandria Library,
Special Collection, Griffin WWII Collection

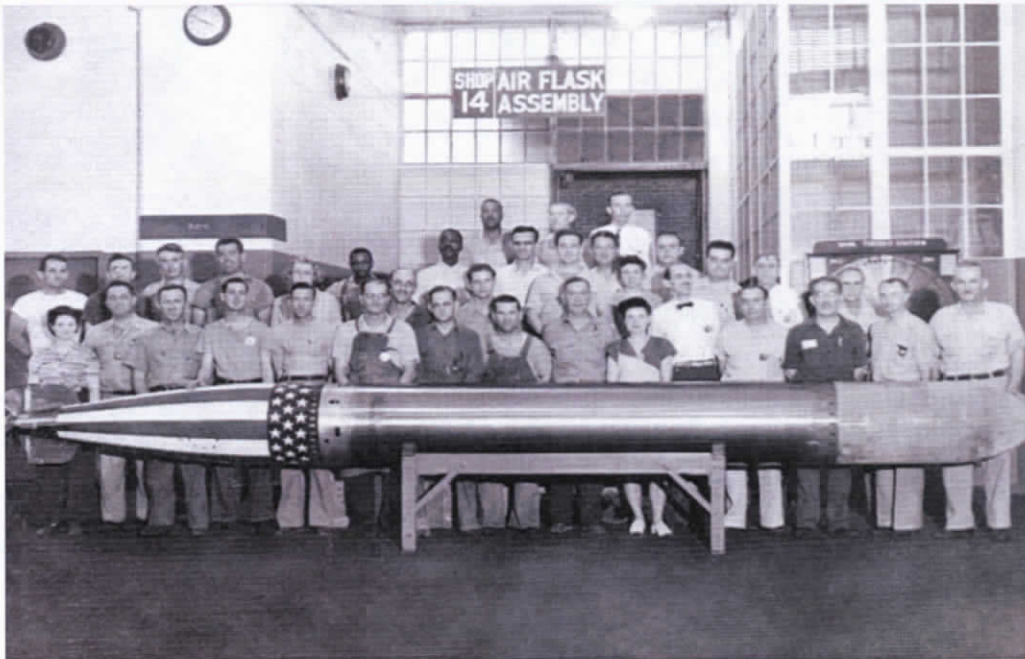


Zouave soldier: Michael J. McAfee
Collection

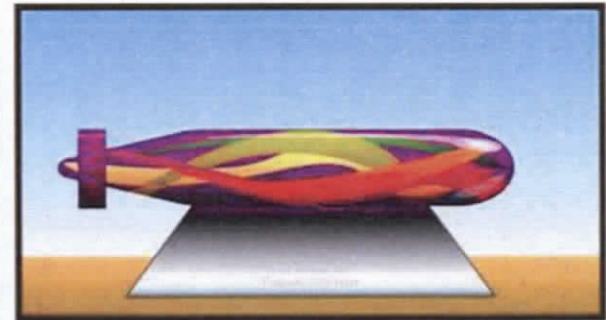


48th Regiment Soldier

Historic witnesses of war.



Torpedo factory workers and torpedo: Alexandria Library, Special Collections



Chris Erney, model of fiberglass torpedo for the dock behind the Torpedo Factory, 2010

Using art to interpret history.



Gunther Demnig, Stolperstein, Berlin



Cobblestone-size medallions appropriate to the Thematic Walks on the Pedestrian Path.



Alexandria, Plat from 1749, Library of Congress



Delineate the original Crescent Bay

Eleven Minute Line, Maya Lin, Wanas Foundation, Sweden

4. Cultural Anchors



Torpedo factory Art center, photo by Steve Ainsworth

Establish three cultural anchors along the waterfront-performing arts in Oronoco Bay and Robinson Terminal North, visual arts in the Torpedo Factory and a museum devoted to Alexandria's history in The Strand area



Amphisculpture, Beverly Pepper



Waccabuc Amphitheater, 2000, Mixed Media Land Art Theatre

Private Commission, New York State

Amphitheater, Beverly Pepper



Bill and Melinda Gates Amphitheater, Olympic Sculpture Garden, Seattle, Washington

Establish an amphitheater in Oronoco Bay Park as the basis for an outdoor cultural anchor



Establish an outdoor cultural anchor in Oronoco Bay Park with a Boxcar Theater



An example of a history and cultural center utilizing traditional warehouses.

Waterfront Art Center, Scandinavia

5. Living Shoreline



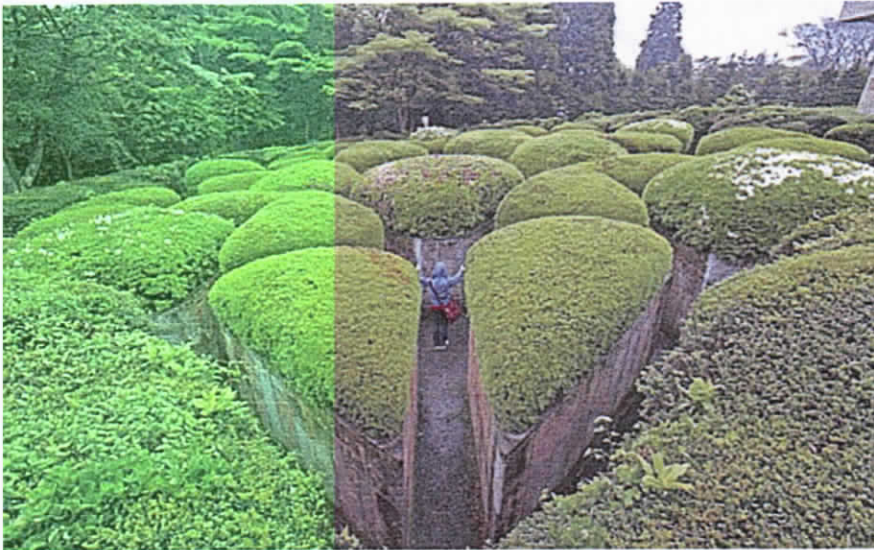
Bring people to the water's edge to interact with the river beside them

Elizabeth Poole, Drawings in the Water, Noosa, Queensland, Australia



Emphasize the river and water in the design of the site and its surroundings

Fountain, WET Design, Brooklyn Museum of Art, NY



Maze Garden, Hakone, Japan



Playing Chess, Germany

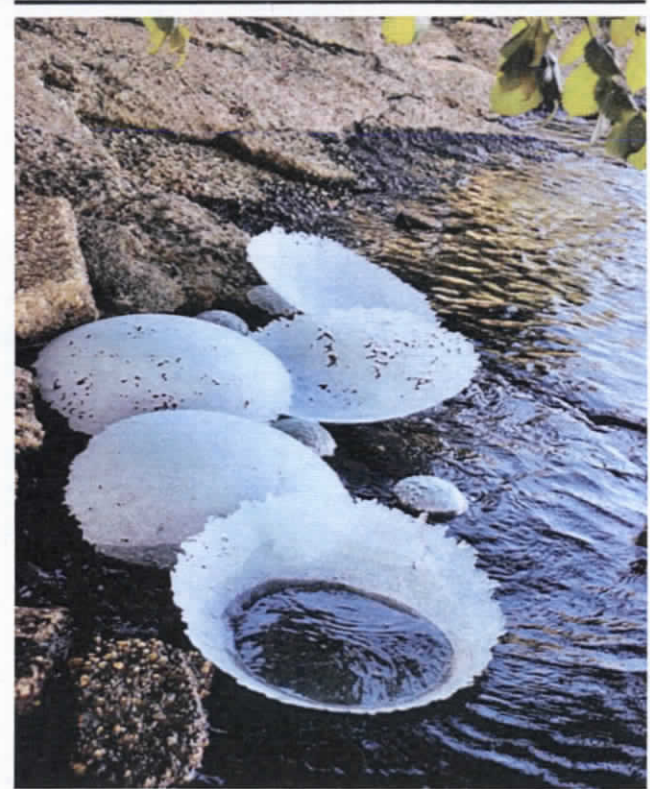


Robert Irwin, Two Running Violet V Forms, University of California, San Diego

Ensure that the waterfront parks provide enjoyment and pleasant surprises for people of all ages



Dale Chihuly Boat, Longhouse Foundation, East Hampton, NY



Alison Sigethy On the Edge, salvaged safety glass

Artistic interpretations along the river's edge of Alexandria's history in glass-making.

Key Elements of the Waterfront

1. Pedestrian Path
2. Cultural Areas
3. Thematic Walks
4. Cultural Anchors
5. Living Shoreline