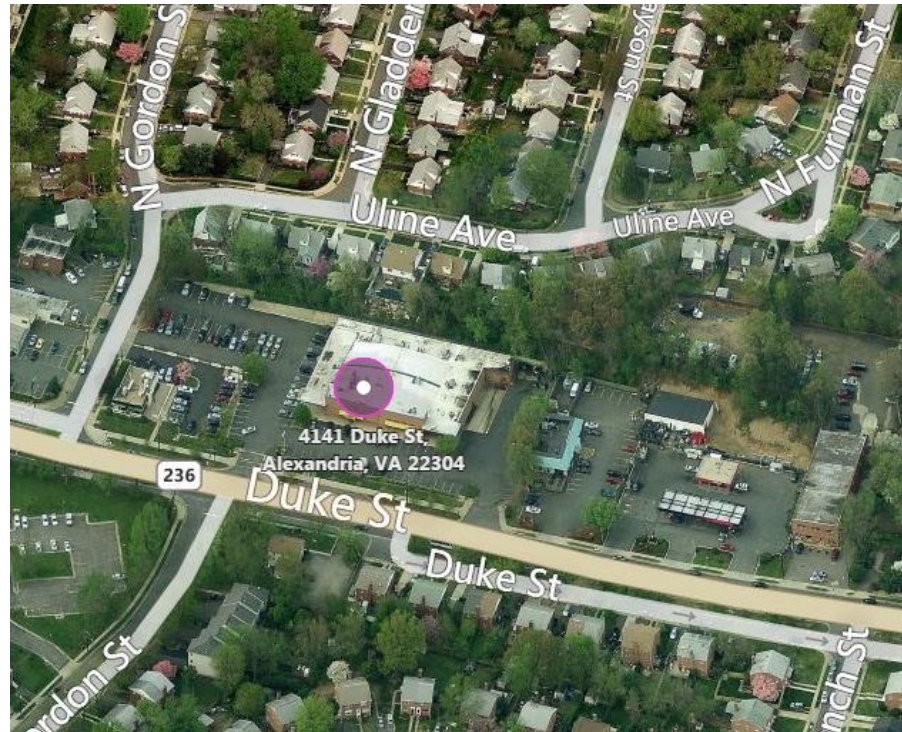


# SUP#2015-0112

## 4141 Duke Street - Fresenius Medical Care

- SUP request to expand a non-complying medical care facility
- Existing business within building since 1991
- Operates in 12,292 square feet



- Proposes to expand into 7,338 square feet of vacant space previously occupied by Fuddrucker's
- Accommodates 400 patients in a two-mile radius
- Planning Commission recommends approval

