

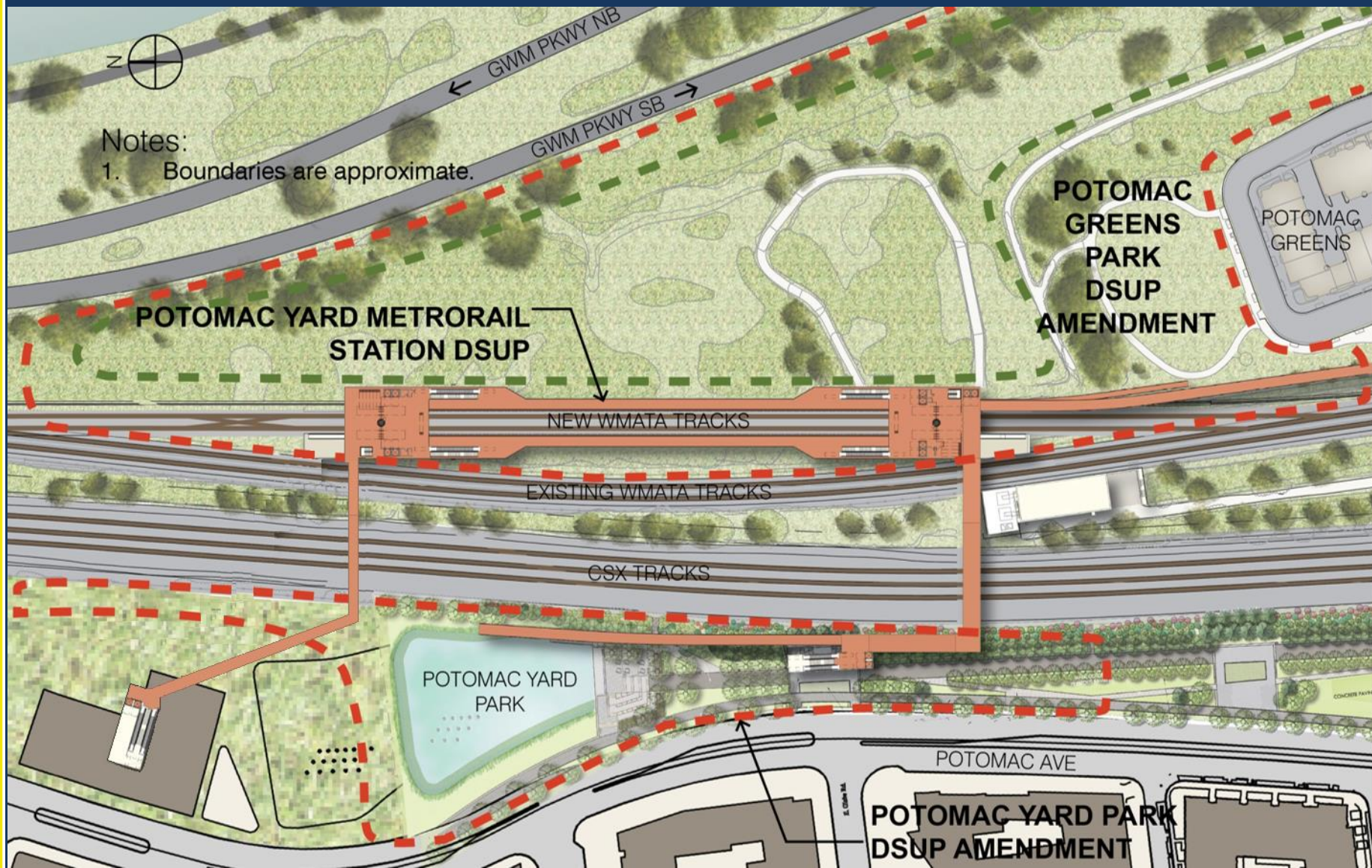


POTOMAC YARD METRORAIL STATION DESIGN

City Council Update
January 12, 2016



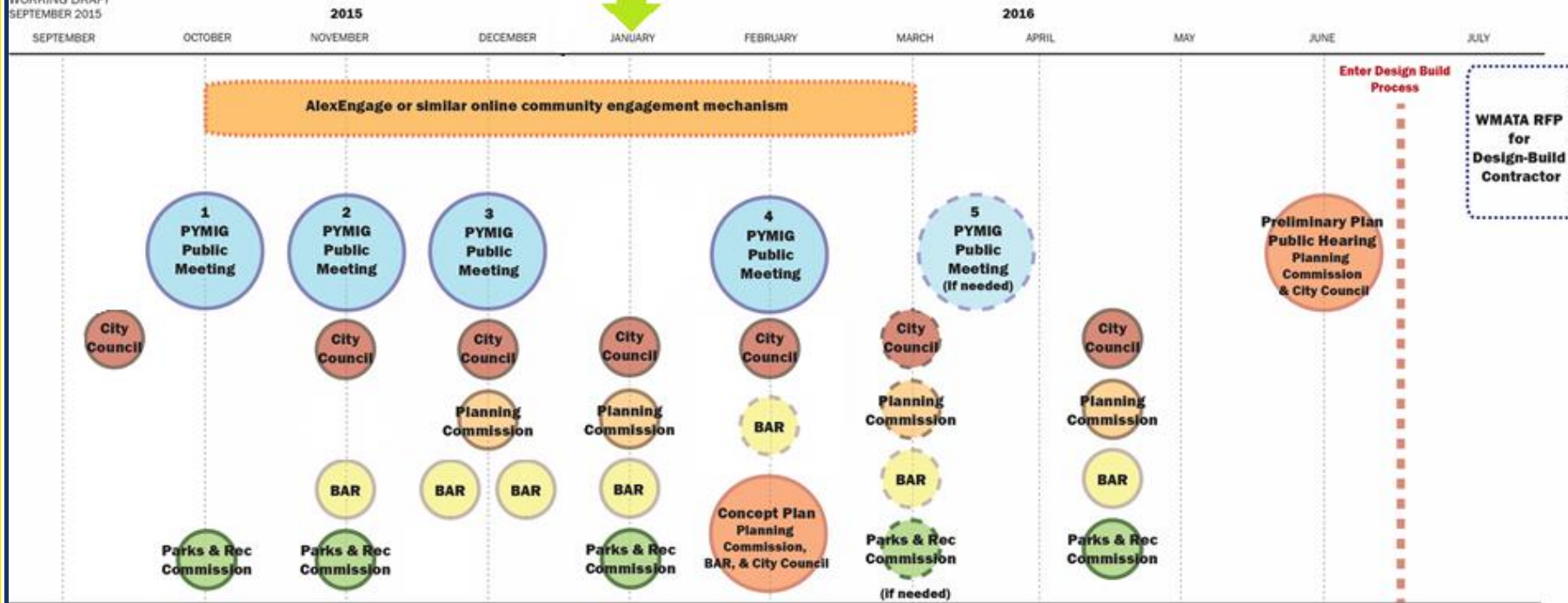
CITY APPROVALS



PROCESS

POTOMAC YARD METRORAIL STATION PROCESS FRAMEWORK

WORKING DRAFT
SEPTEMBER 2015



WORKING DRAFT

Note: This framework is a working draft and is subject to change

STATION ENCLOSURE FORMS

PROPOSED PLANTINGS (TREES, SHRUBS, GRASSES PROVIDED FOR WETLAND RESTORATION AND LANDSCAPE MITIGATION) HAVE BEEN OMITTED IN THEIR ENTIRETY TO SHOW STATION FORM



SPLIT FORM GEOMETRIC

This architectural rendering shows a station enclosure with a split form geometric design. The structure is composed of several interconnected rectangular volumes of varying heights and widths, creating a complex, multi-level facade. The building is set against a backdrop of a city skyline with various building shapes. The foreground is a flat, green field.



SINGLE FORM GEOMETRIC

This architectural rendering shows a station enclosure with a single form geometric design. The structure is a long, low-profile building with a series of rectangular volumes of varying heights and widths, creating a complex, multi-level facade. The building is set against a backdrop of a city skyline with various building shapes. The foreground is a flat, green field.



SINGLE FORM CURVILINEAR

This architectural rendering shows a station enclosure with a single form curvilinear design. The structure is a long, low-profile building with a series of curved, flowing volumes of varying heights and widths, creating a complex, multi-level facade. The building is set against a backdrop of a city skyline with various building shapes. The foreground is a flat, green field.

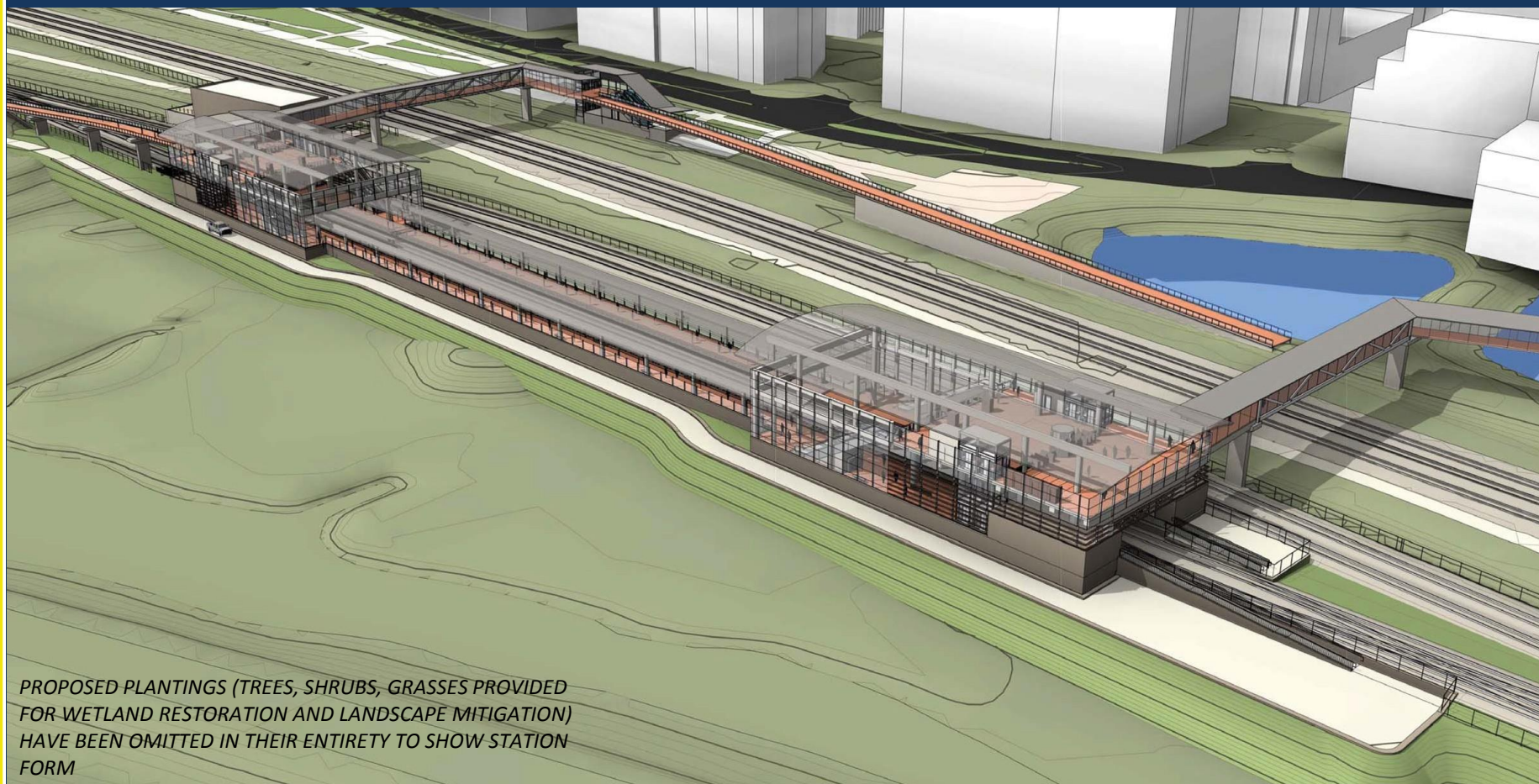


SINGLE FORM CURVILINEAR - ALTERNATE

This architectural rendering shows a station enclosure with a single form curvilinear - alternate design. The structure is a long, low-profile building with a series of curved, flowing volumes of varying heights and widths, creating a complex, multi-level facade. The building is set against a backdrop of a city skyline with various building shapes. The foreground is a flat, green field.



SPLIT FORM GEOMETRIC



PROPOSED PLANTINGS (TREES, SHRUBS, GRASSES PROVIDED FOR WETLAND RESTORATION AND LANDSCAPE MITIGATION) HAVE BEEN OMITTED IN THEIR ENTIRETY TO SHOW STATION FORM



SPLIT FORM GEOMETRIC

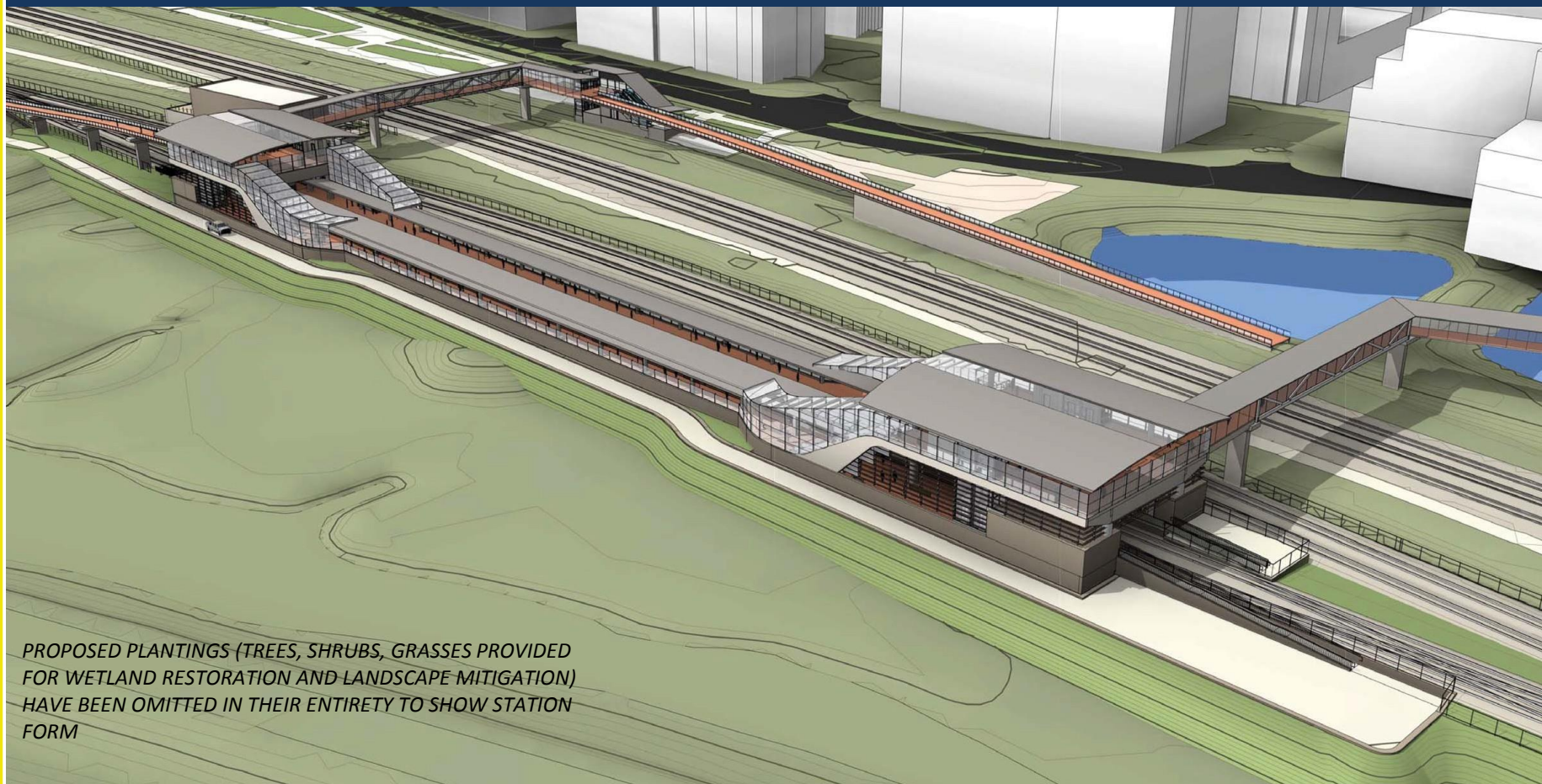


PROPOSED PLANTINGS (TREES, SHRUBS, GRASSES PROVIDED FOR WETLAND RESTORATION AND LANDSCAPE MITIGATION) HAVE BEEN OMITTED IN THEIR ENTIRETY TO SHOW STATION FORM





SPLIT FORM CURVILINEAR



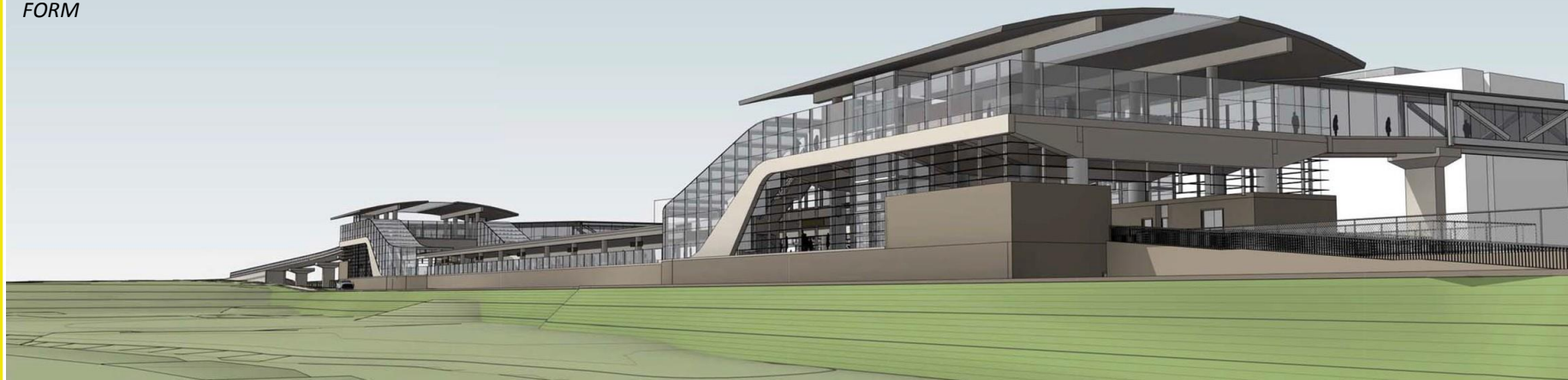
PROPOSED PLANTINGS (TREES, SHRUBS, GRASSES PROVIDED FOR WETLAND RESTORATION AND LANDSCAPE MITIGATION) HAVE BEEN OMITTED IN THEIR ENTIRETY TO SHOW STATION FORM



SPLIT FORM CURVILINEAR



PROPOSED PLANTINGS (TREES, SHRUBS, GRASSES PROVIDED FOR WETLAND RESTORATION AND LANDSCAPE MITIGATION) HAVE BEEN OMITTED IN THEIR ENTIRETY TO SHOW STATION FORM

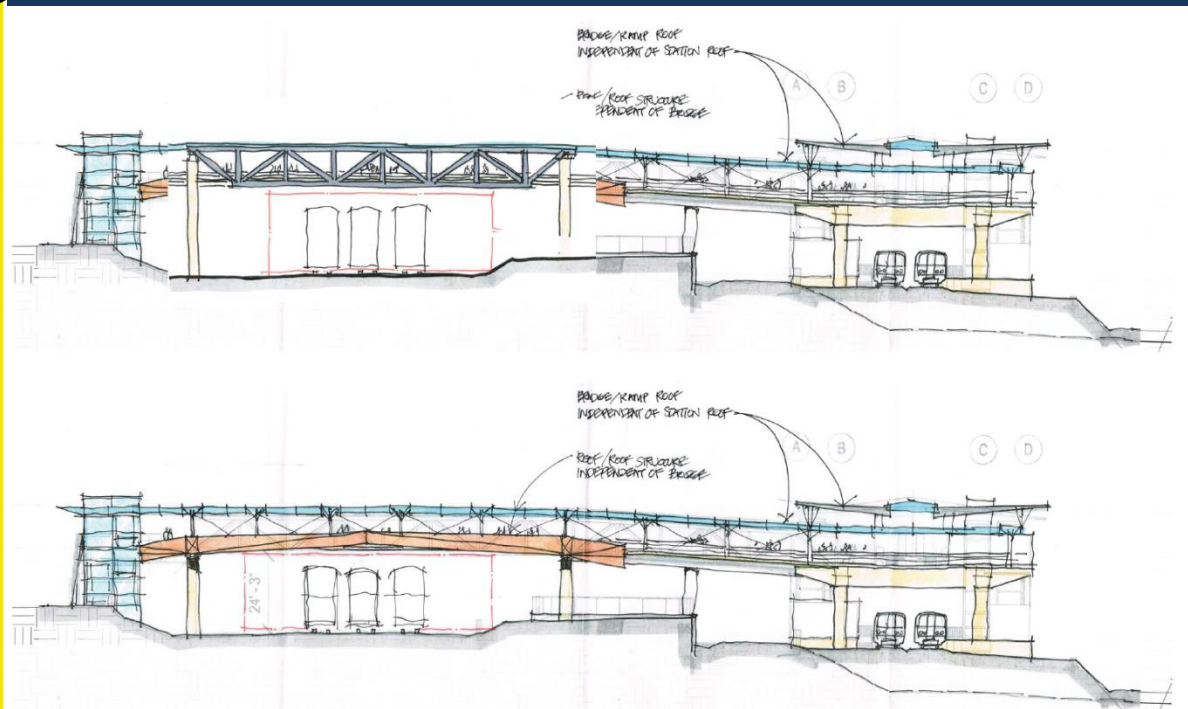




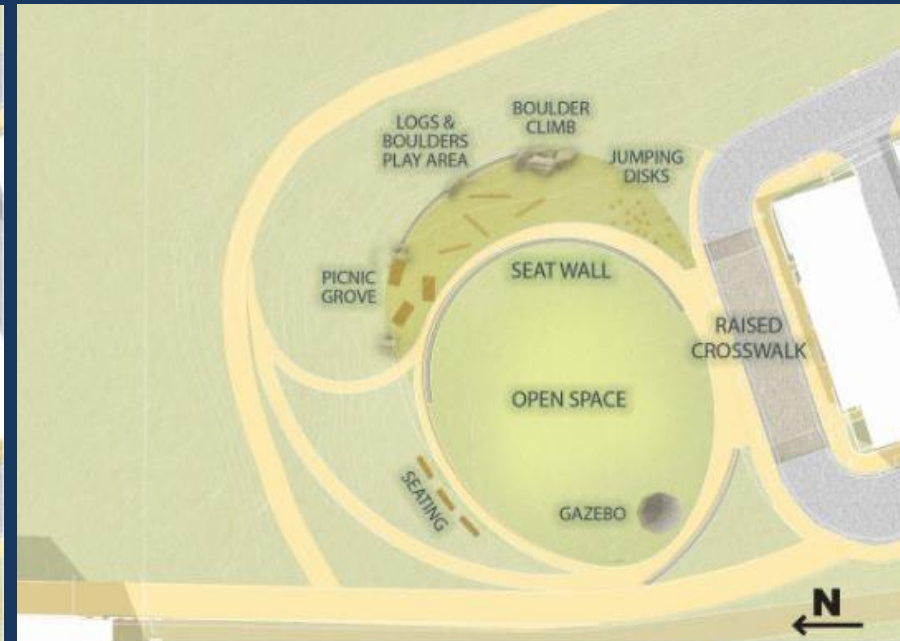
BRIDGE STRUCTURE - CONCEPT OPTIONS



BRIDGE STRUCTURE - HYBRID OPTIONS



POTOMAC GREENS PARK - OPTIONS





NEXT STEPS

- Refine design concept
- Refine concept for Potomac Greens Park
- Develop concept for Potomac Yard Park
- Update Boards and Commissions
- Finalize EIS



QUESTIONS?

**For more information, visit:
www.alexandriava.gov/PotomacYard**