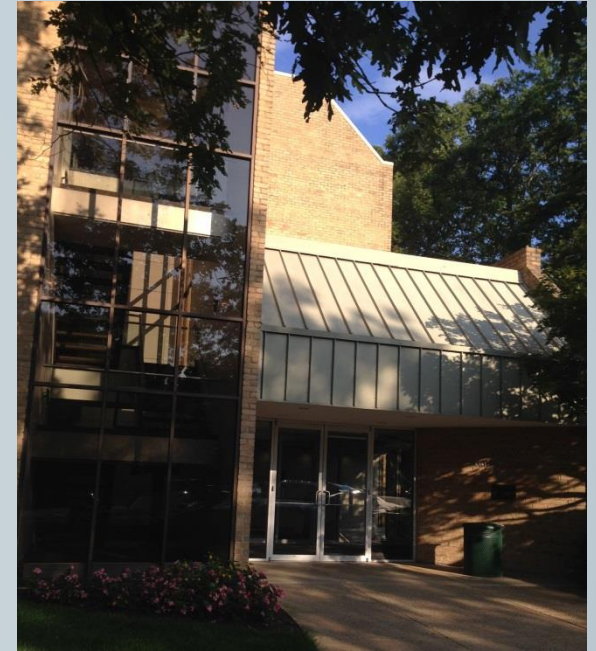




**The City of Alexandria
Workforce Development Center**

Program Update

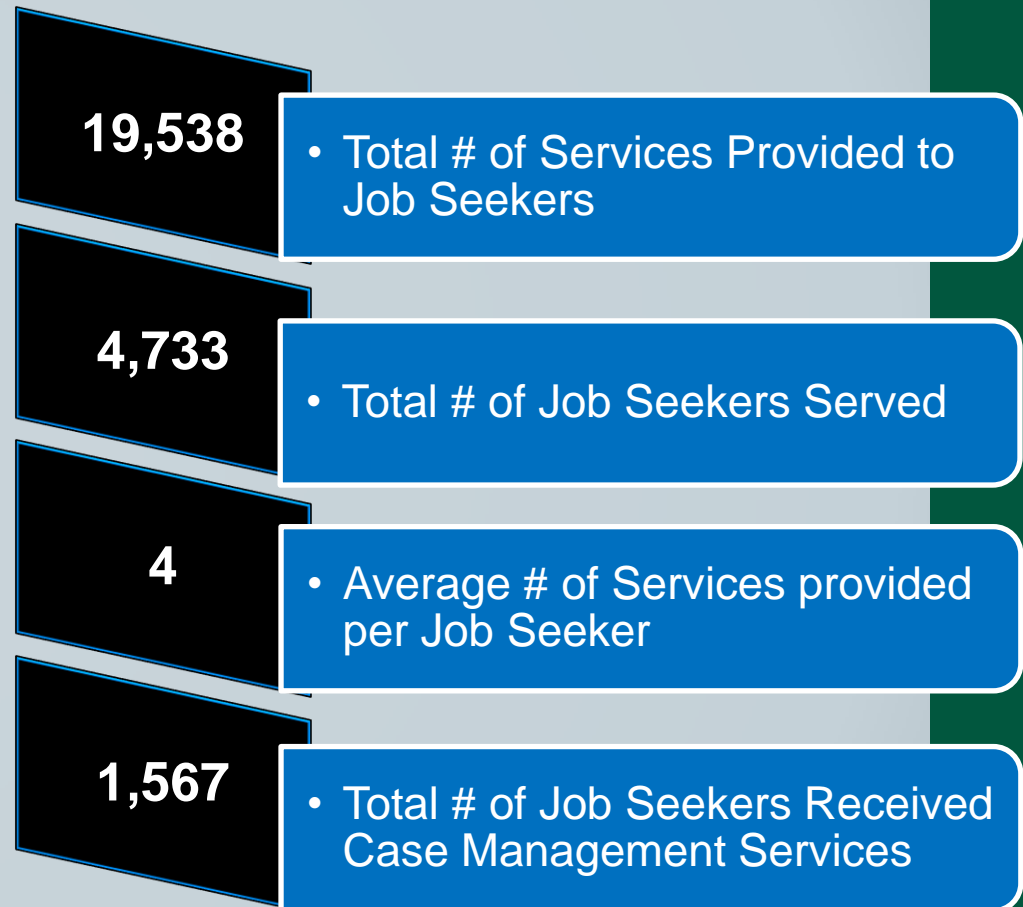


**Bridging The Gap
Between Workforce
Supply and Demand**

9.29.2015

WDC Consumers in FY15

- Adults
- Veterans
- Employed, Underemployed or Unemployed
- Returning Citizens
- Experienced Workers 50+
- Persons with Disabilities
- Public Benefits Recipients
- Refugees and Asylees
- Youths and Young Adults



FY15 Profile of 1,567 Case Managed Job Seekers

Demographics Compared to the City:



High School Educated or Less (18+)

WDC: 69%
City: 22%



Persons with Disabilities

WDC: 12%
City: 7%



Veterans (18+)

WDC: 3%
City: 9%

50+

Experienced Workers 50+

WDC: 12%
City: 27%



Youth (Under 18)

WDC: 22%
City: 17%



Non-English Speaking

WDC: 13%
City: 12%

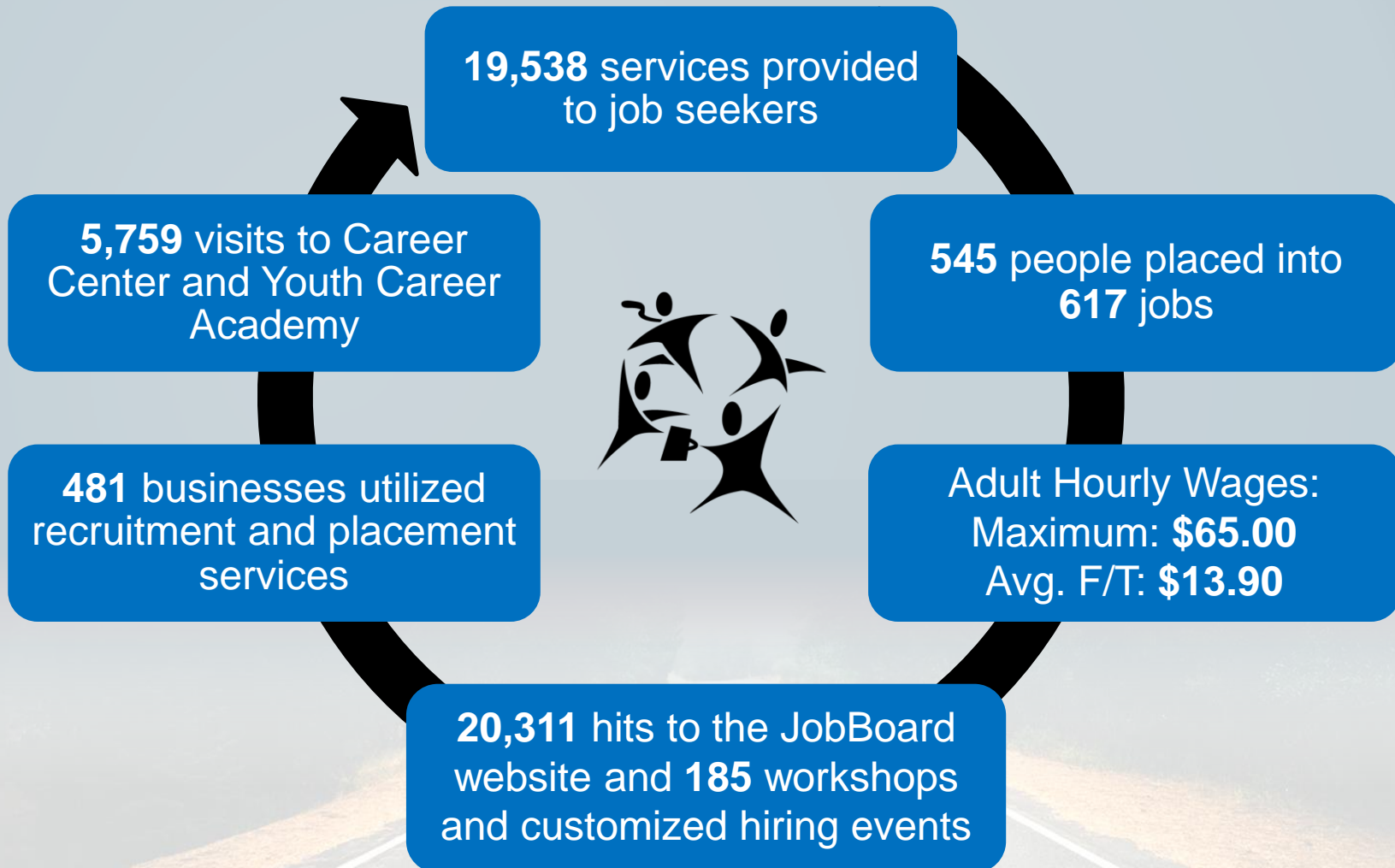
Source:

Harmony: Consumers served with case numbers, 07.01.2014 to 6.30.2015 (n=1,567).

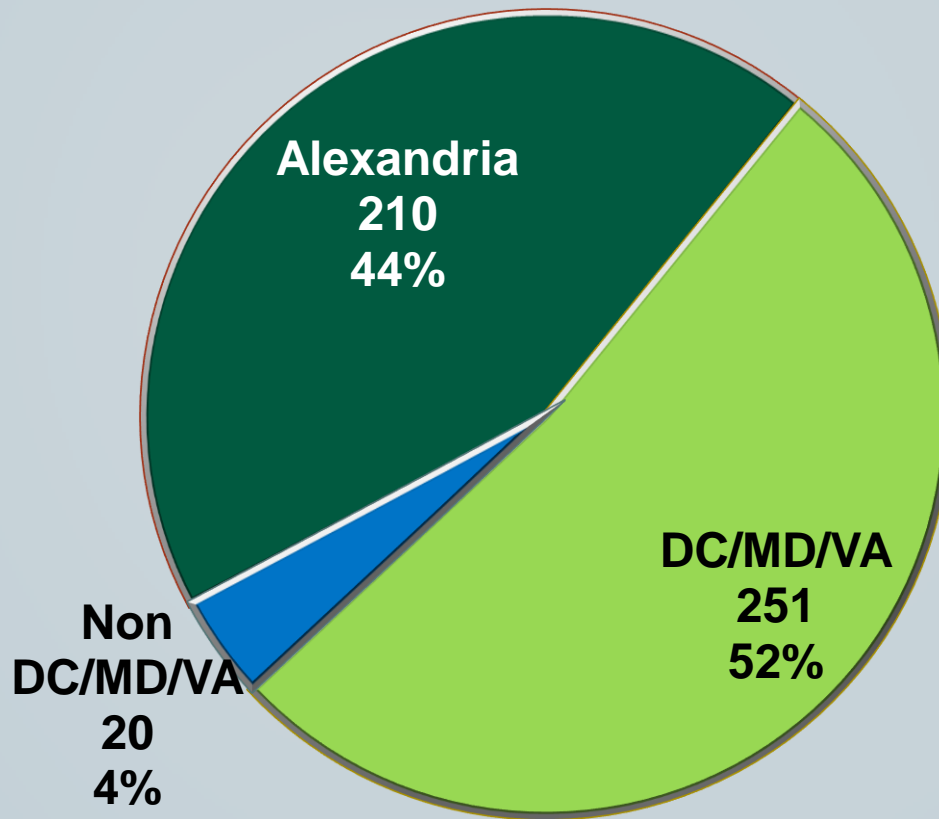
For non-English speaking: n=710 cases with language data

All City data from American Community Survey 5-Year Estimates, SELECTED CHARACTERISTICS OF ... 2009-2013 (n varies by selected characteristic); Alexandria, VA

FY15 in Review

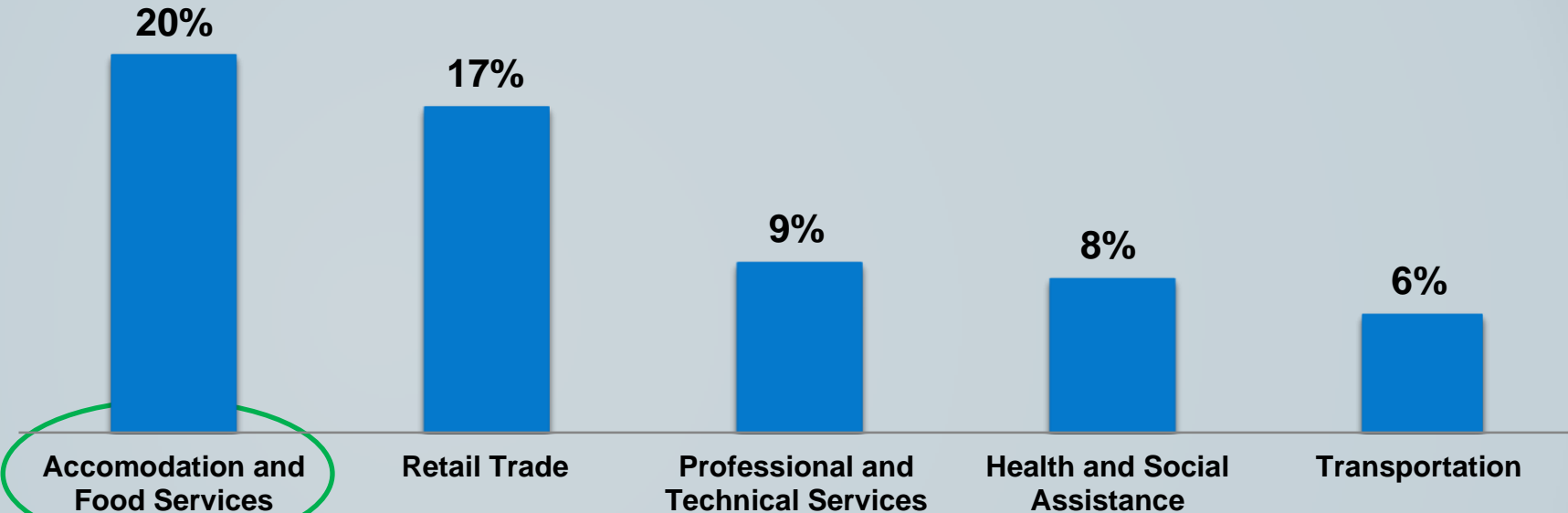


481 Business Customers Served in FY15: By Location and Repeat Service



22% of businesses served in FY15 were repeat customers from FY14.

481 Business Customers Served in FY15: By Industry



Rapid Response to Business Staffing Needs:



Workforce Supply & Economic Demand

Alexandria Population (142,321 Residents) by Income Level*

**FPL:
Federal
Poverty
Level**



Workforce Supply and Economic Demand

Supply

**4,496
Alexandrians
received
WDC
services in
FY15[†]**

Demand

**6,289
Available
Jobs in
Alexandria
Paying
\$30k+/year[±]**

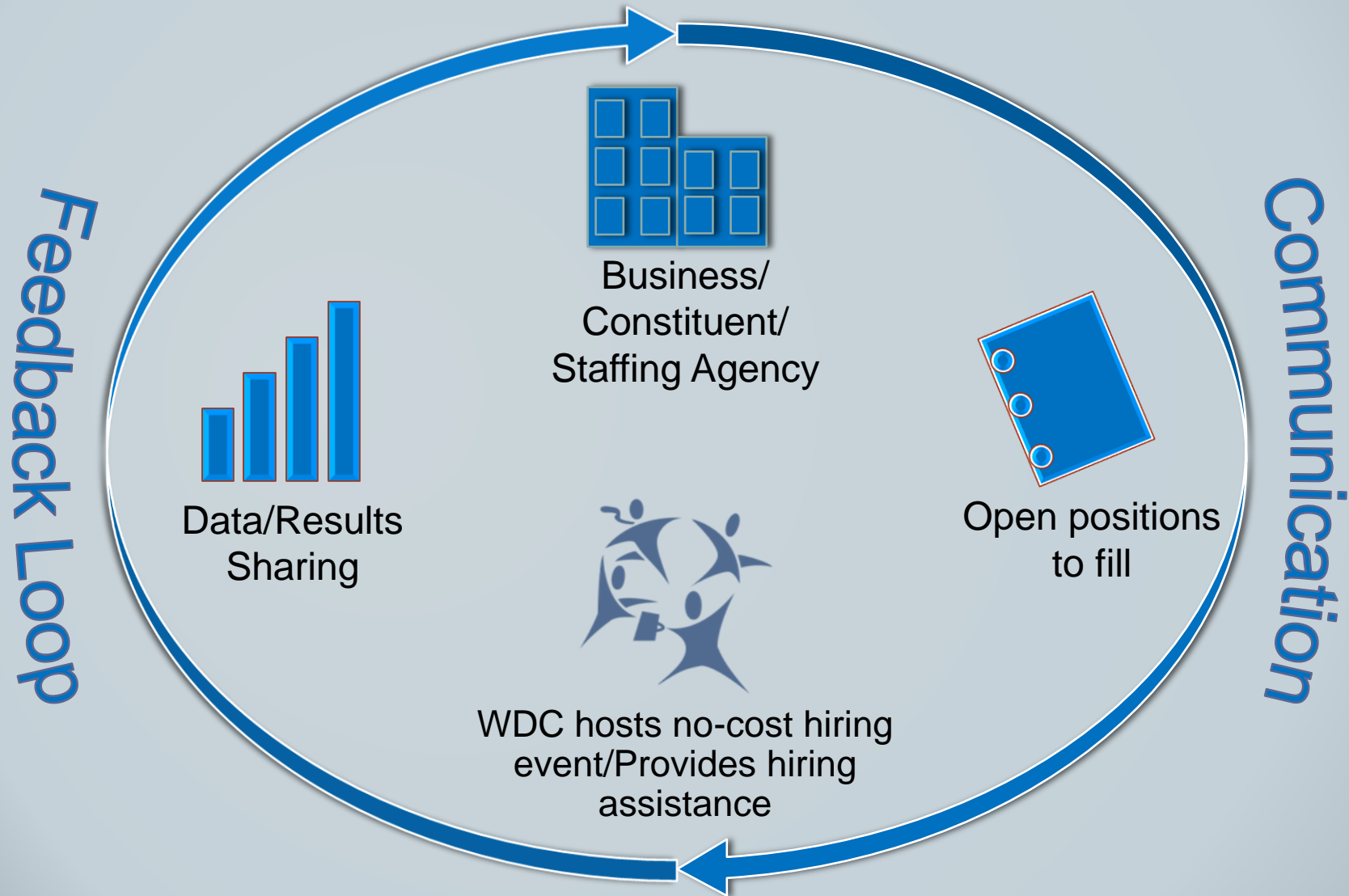
Source:

*American Community Survey 5-Year Estimates: SELECTED CHARACTERISTICS OF PEOPLE AT SPECIFIED LEVELS OF POVERTY IN THE PAST 12 MONTHS, 2009-2013; Alexandria, VA

[†] Harmony: 95% of consumers served with Inquiries, Visits, JDWRs, Notes and Follow-Ups, 07.01.2014 to 6.30.2015

[±] WANTED Analytics: Job openings in Alexandria with a minimum salary of \$30,000, 8.17.2015, posted by direct employers

WDC as a Community Partner



Comparison of WDC to Staffing Agencies

+=Free to the User \$=Cost N/O=Not Offered N/A=Not Applicable	WDC	Staffing Agency A	Staffing Agency B	Staffing Agency C
Business Transaction/Contract Fees	N/A	\$	\$	\$
Career Pathways for Youth	+	N/O	N/O	N/O
Customized Programs for Experienced Workers 50+	+	N/O	N/O	N/O
Federal Bonding Program	+	N/O	N/O	N/O
Provide Supportive Services (Child Care, Transportation and Uniforms)	+	N/O	N/O	N/O

- **For Constituents:** Low-cost and no-contract Federally funded resource for staffing agencies, businesses and constituents.
- **For Consumers:** Holistic and one-on-one case management and customized resources for clients.

FY16 Initiatives

- Increase services to adults and youths by 5%
- Expand in-demand Career Pathway programming
- Launch e-news for businesses, relevant to labor trends
- Strengthen internal data collection and reporting system



The City of Alexandria Workforce Development Center

Q&A



**Bridging The Gap
Between Workforce
Supply and Demand**