



Van Dorn/Beauregard Transitway Alternatives Analysis/ Environmental Assessment

City Council

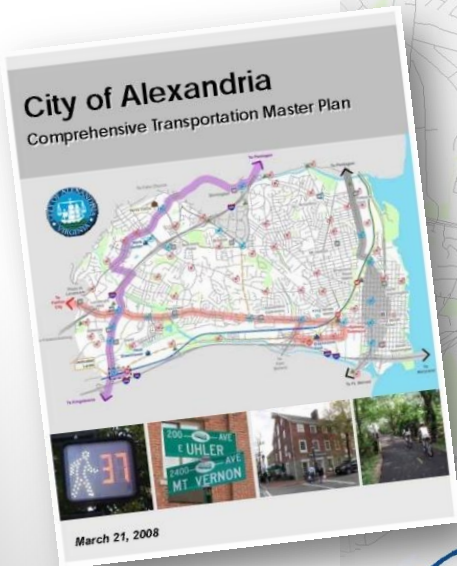
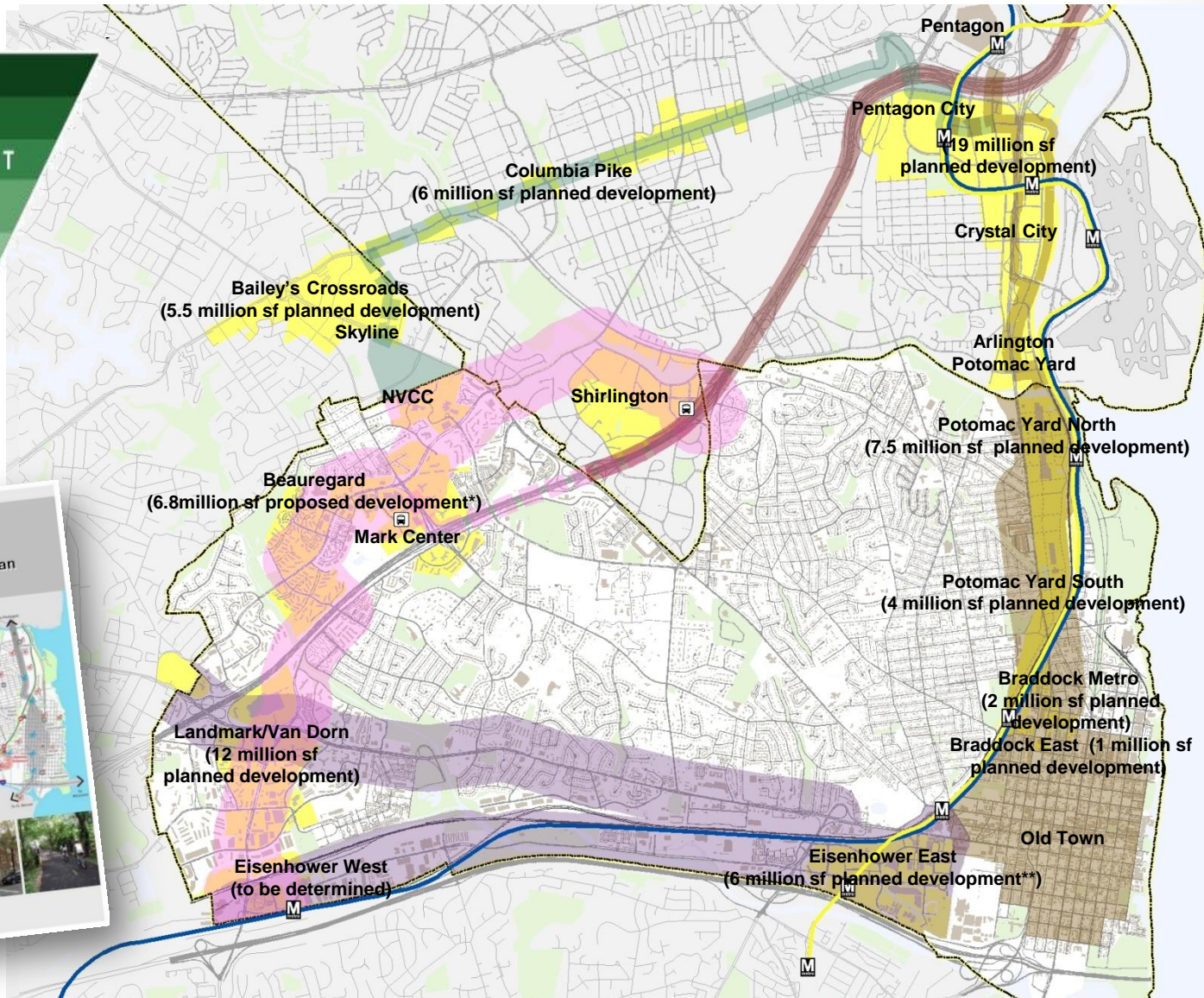
March 11, 2014

Overview

- Update on Van Dorn/Beauregard Transitway
- Establishment of a Van Dorn/Beauregard Transitway Policy Advisory Group

City Transitway Initiative

PEDESTRIANS
BICYCLES
PUBLIC TRANSIT
COMMERCIAL VEHICLES
TAXIS
HIGH OCCUPANCY VEHICLES
SINGLE OCCUPANCY VEHICLES



Van Dorn/Beauregard Transitway

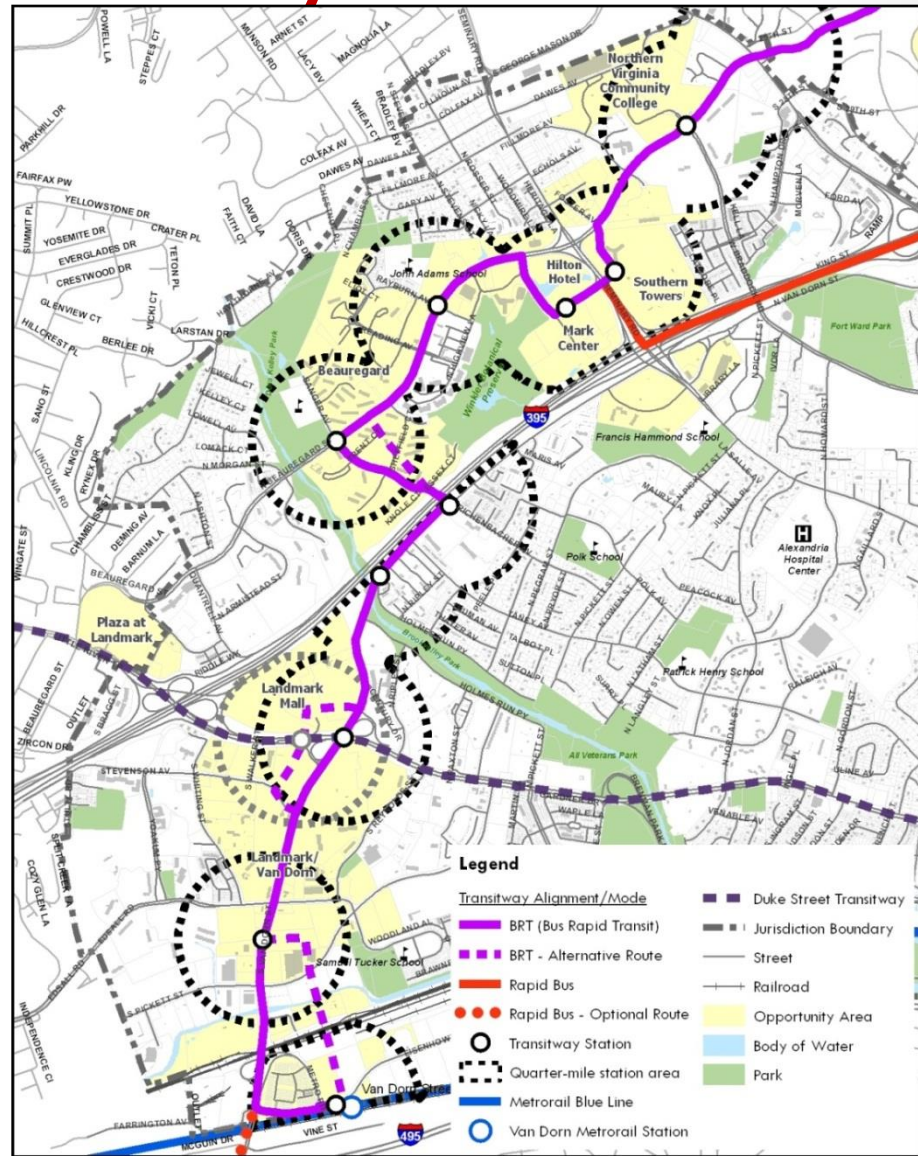
Bus Rapid Transit in Dedicated Lanes from Van Dorn Metro to Pentagon

Physical Characteristics

- Low-floor BRT vehicles
- Dedicated lanes (~80% to 90% of corridor)
- Off-board fare collection
- Service specific branding and identity
- Substantial transit stations
- Potential to convert to streetcar in future

Operational Characteristics

- Transit signal priority at intersections
- Real-time passenger information
- High frequency and long span of service
- Weekday ridership estimate of 12,500 to 17,500 daily in 2035



Alternatives Analysis/ Environmental Assessment

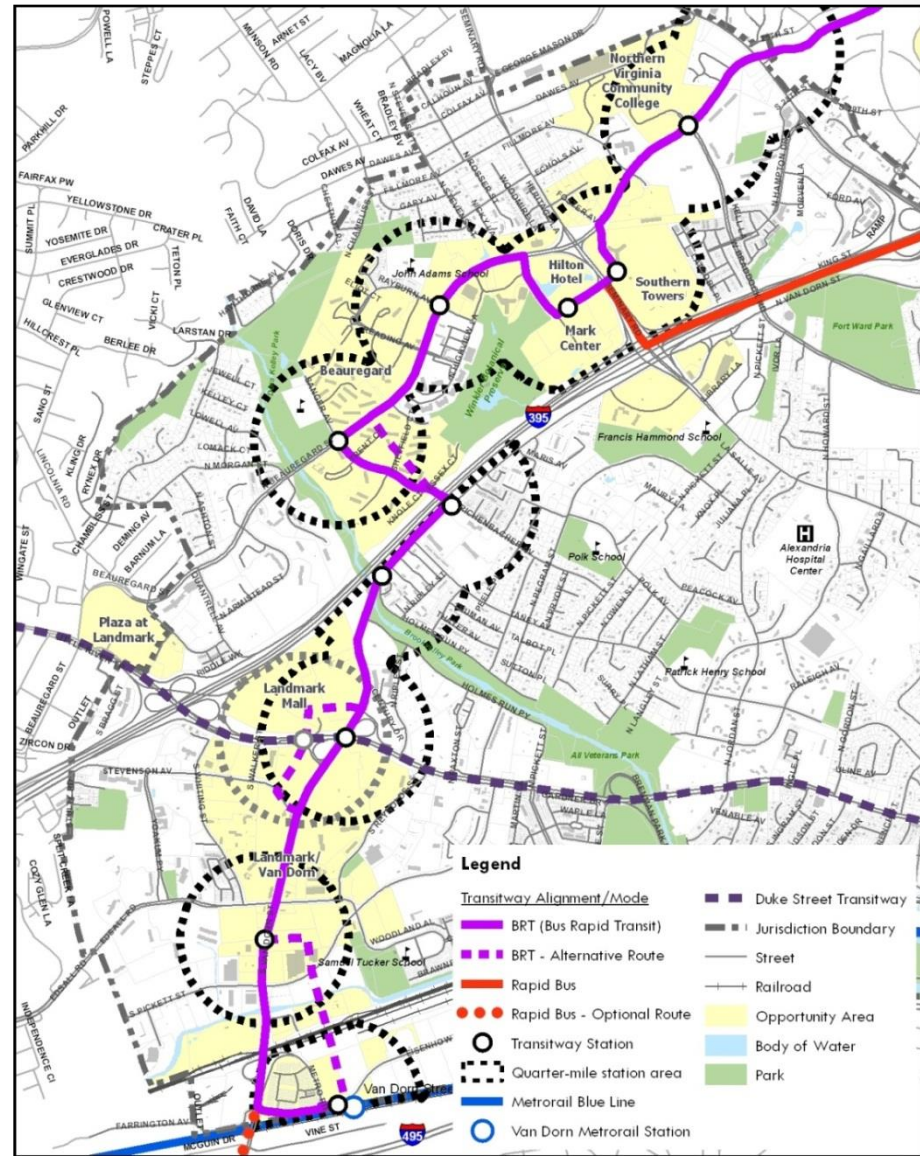
- Additional planning work necessary to apply for federal funding
- Alternatives Analysis (AA)
 - Evaluates several alternatives
 - Provides information on benefits, costs, and impacts, so that a locally preferred alternative can be identified
- Environmental Assessment (EA)
 - Analyzes potential transportation, social, economic, and environmental impacts of preferred alternative
 - Identifies mitigation measures, as necessary

Alternatives Analysis

- Three alternatives:
 - Build Alternative
 - Dedicated transit lanes between Van Dorn Metrorail Station and the Pentagon
 - Transportation Systems Management Alternative
 - System changes to improve speed and reliability
 - No major capital investment like dedicated lanes
 - No Build Alternative
 - Existing and planned transportation network

Build Alternative Refinement

- Optimize service to NVCC
- Balance stop spacing
- Refine access to Landmark Mall
- Determine initial cross section on Van Dorn Street



Policy Advisory Group

Mission

Provide input on key deliverables and project recommendations related to the Van Dorn/Beauregard Transitway AA/EA

Tasks

Review and provide guidance on:

- Definition of project Purpose and Need
- Refinement of alternatives
- Evaluation measures and priorities
- Evaluation results and determination of Locally Preferred Alternative
- Results of the environmental analysis

Advisory Group

Proposed Composition

- Transportation Commission (1)
- Planning Commission (1)
- Environmental Policy Commission (1)
- Budget and Fiscal Affairs Advisory Committee (1)
- Transit professional (1)
- Community representatives (3)
- Developer representative (1)

- Total – 9 members

Next Steps

- Winter 2014 – Call for Advisory Group Nominations
- Spring 2014 – First Advisory Group meeting
- Spring 2014 – First Public Meeting

Questions?

