


City Council/Alexandria Renew Board Presentation

Council Work Session, January 28, 2014

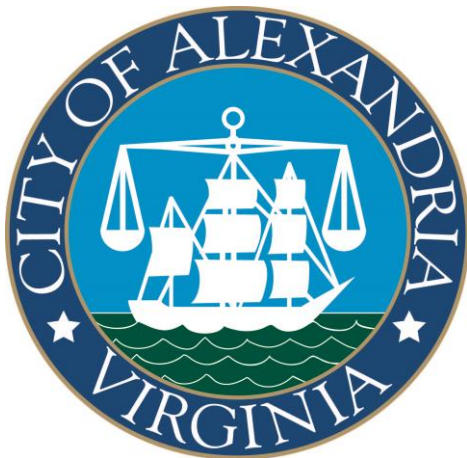
Agenda

- **Alexandria Renew's Water Role in City**
 - **South Carlyle Strategy Update**
 - **AlexRenew's Reclaimed Water Strategy**
 - **Four Mile Run Pump Station Upgrade Update**
 - **Wet Weather Management Program**
- 

How does water work in our City?

- Owns & operates sewer lines
- Manages storm water
- Owns & operates combined sewer system

- Pumps & intercepts dirty water from City system
- Cleans dirty water at wastewater treatment plant
- Reuses reclaimed water

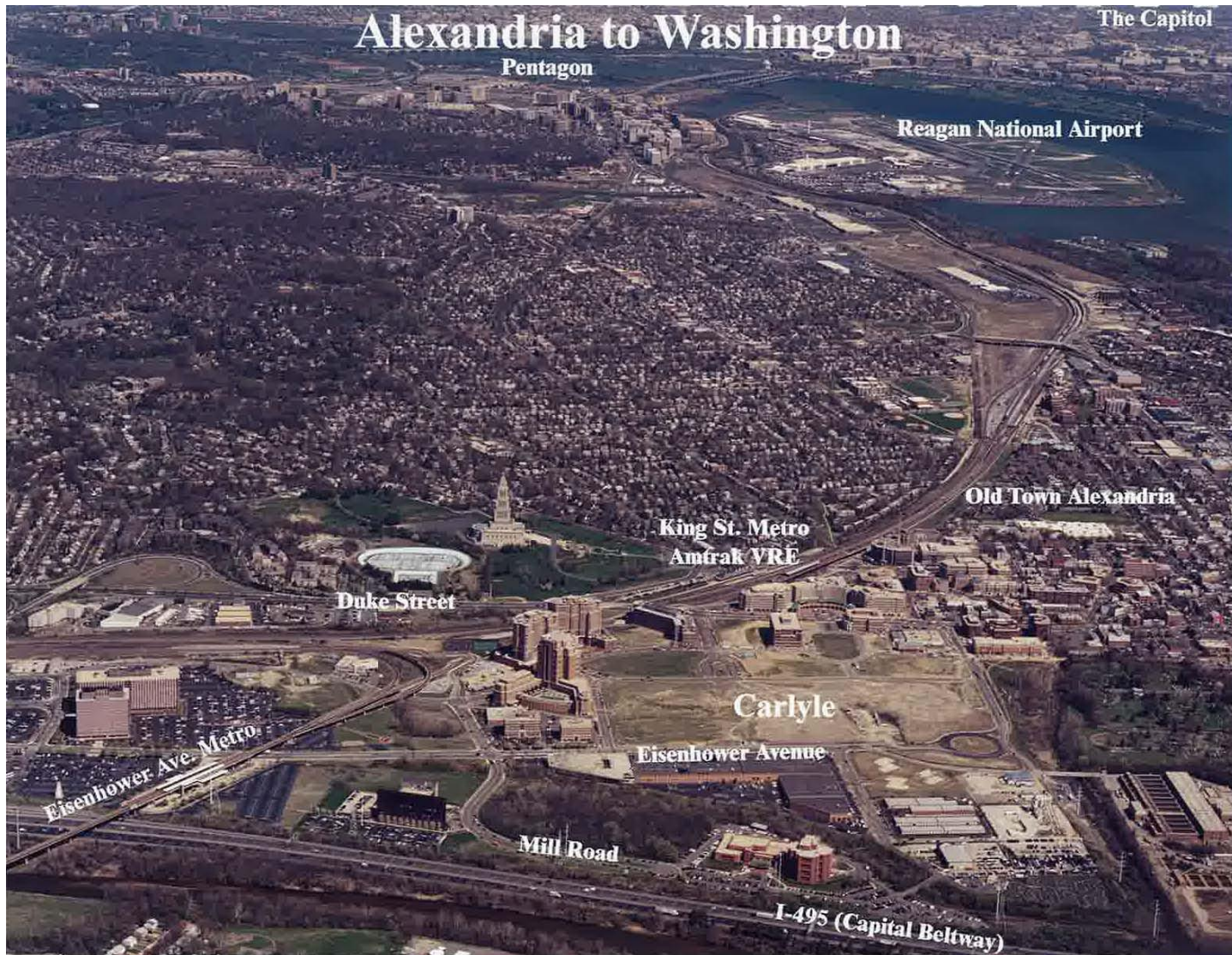


VIRGINIA
AMERICAN WATER

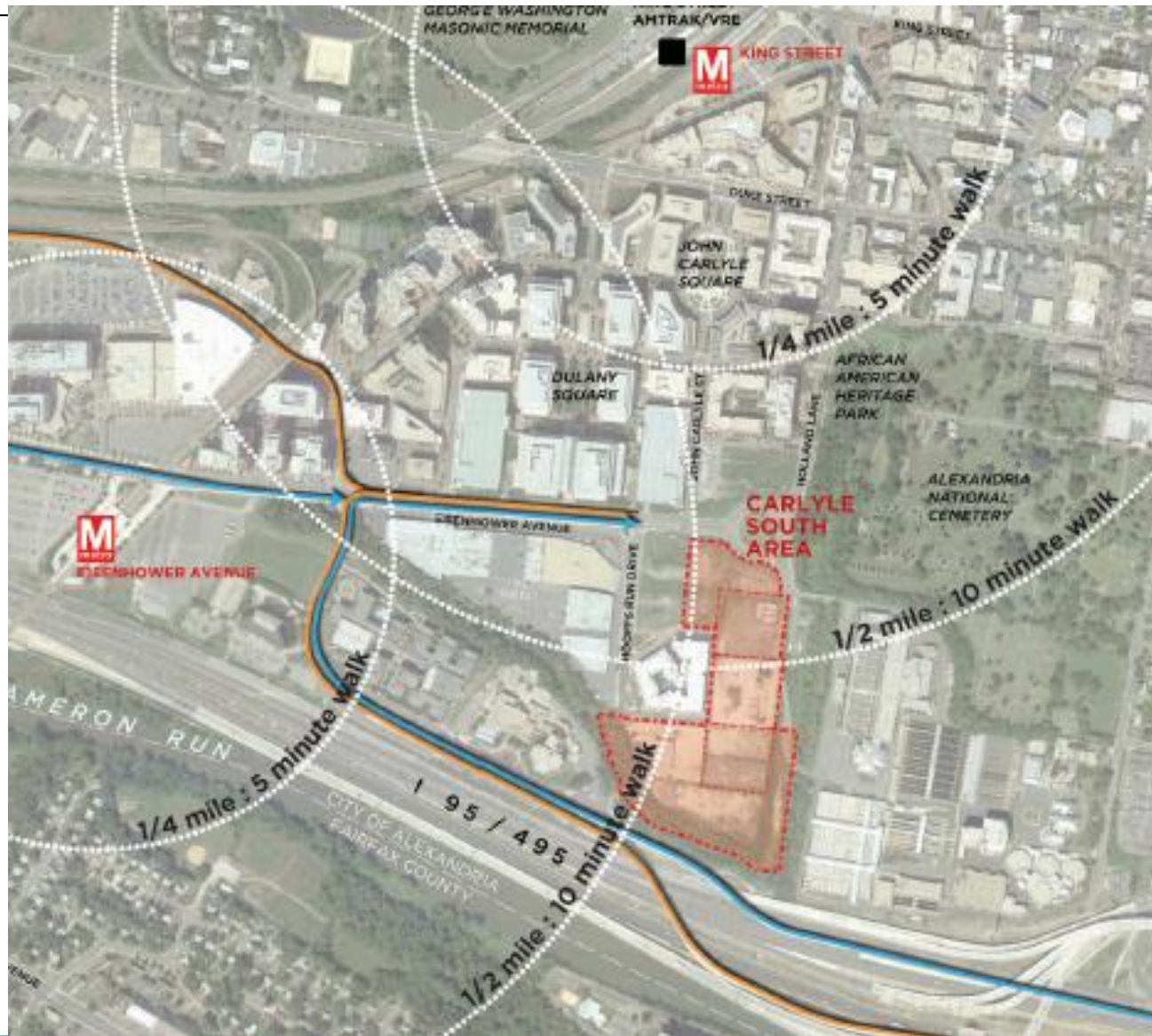
Provides drinking water



City of Alexandria Circa 1996



South Carlyle Strategy Area



South Carlyle Approved Strategy



AlexRenew West Site Construction January 2014



Alexandria Renew Enterprises and Vicinity Future



Alexandria Renew Enterprises and Vicinity Future



Alexandria Renew Enterprises Reclaimed Water Program



Alexandria Renew Enterprises Four Mile Run Pump Station Upgrade Project



Alexandria Renew Enterprises Four Mile Run Pump Station Upgrade Project



Alexandria Renew Enterprises Financial Resources Comparison

To be presented at work session

Wet Weather Control Program Objectives

- **Alexandria Service Area Focus –**
 - Minimize basement backups in Commonwealth Avenue sewershed
 - Reduce extreme wet weather flows to Four Mile Run Pump Station
 - Relocate and reduce discharges from Combined Sewer Overflow (CSO) outfall #004
 - Construct tunnel from current CSO #004 along African American Park to AlexRenew

- **Total Service Area Focus –**
 - Construct Wet Weather Pump Station to move more flow to plant from Holmes Run Trunk Sewer and Commonwealth Interceptor
 - Eliminate Hooff Run Junction Chamber, a constructed overflow point built to protect basements and the plant from flooding

End of Presentation