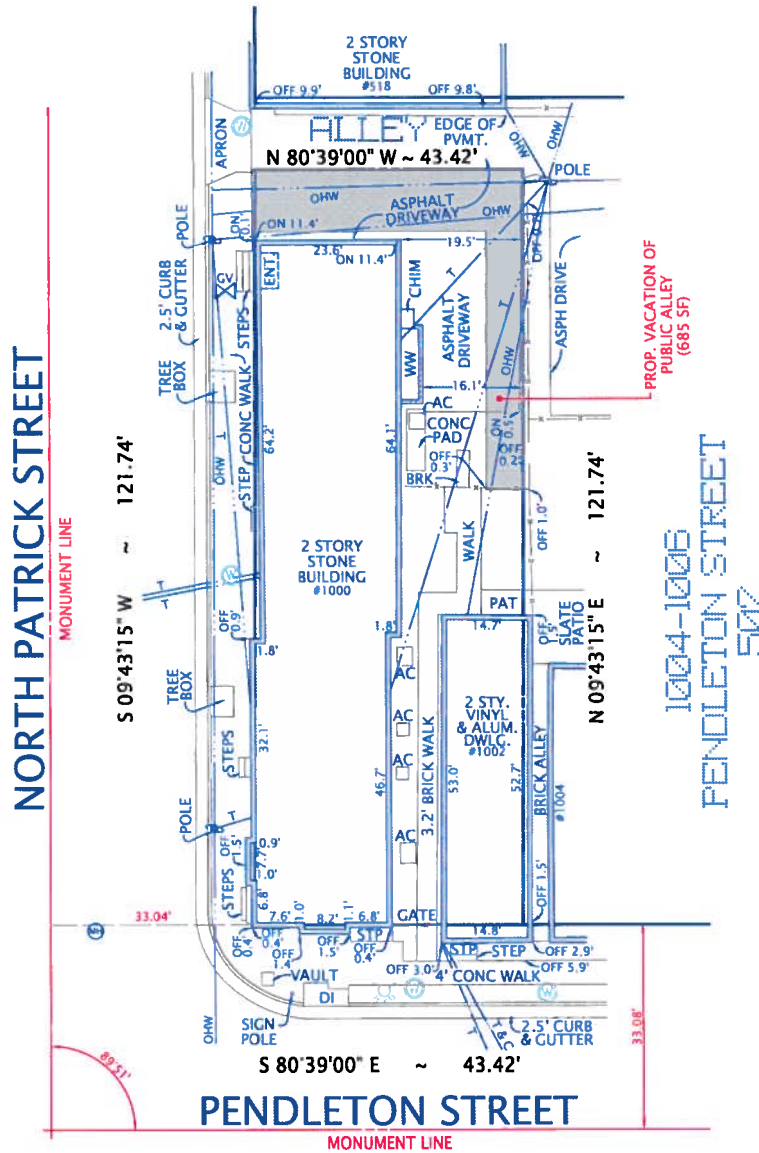
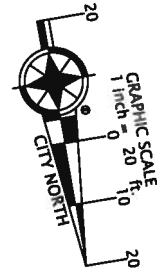


Exhibit A

- NOTES: 1. FENCES ARE FRAME.
 2. UTILITIES ARE UNDERGROUND UNLESS NOTED.
 3. TOTAL AREA = 5,286 SF.



COPYRIGHT BY DOMINION SURVEYORS, INC. THE INFORMATION CONTAINED ON THIS DOCUMENT MAY NOT BE COPIED, REPRODUCED OR ALTERED IN ANY FORM WITHOUT PERMISSION IN WRITING FROM THE COPYRIGHT OWNER.

EXHIBIT PLAT
 SHOWING THE PROPOSED VACATION OF AN ALLEY
 (DEED BOOK 291, PAGE 315)
 AND
 SHOWING BUILDING LOCATION ON
 LOT 600
 OF A RESUBDIVISION OF LOTS 500 & 501
JAMES H. RABY PROPERTY
 (DEED BOOK 834, PAGE 229)
 CITY OF ALEXANDRIA, VIRGINIA
 SCALE: 1" = 20' NOVEMBER 08, 2012

DOMINION Surveyors
 Inc.
 8808-H PEAR TREE VILLAGE COURT
 ALEXANDRIA, VIRGINIA 22309
 703-619-6555
 FAX: 703-799-6412

Vacation
 VAC2013-00002
 1000 Pendleton St