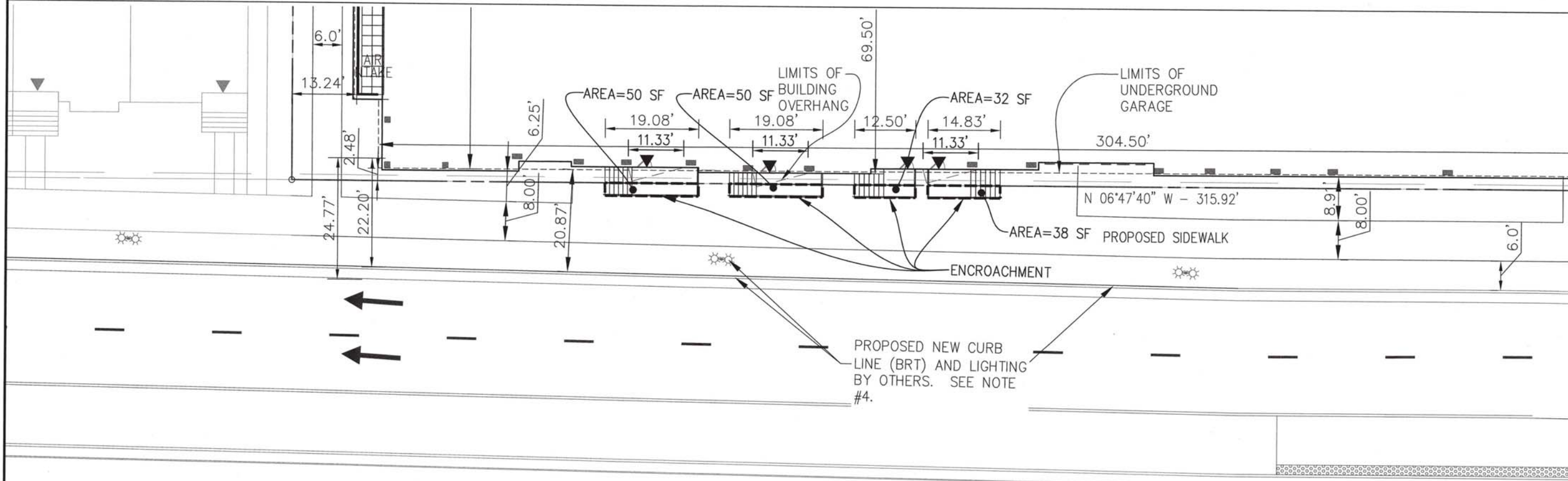
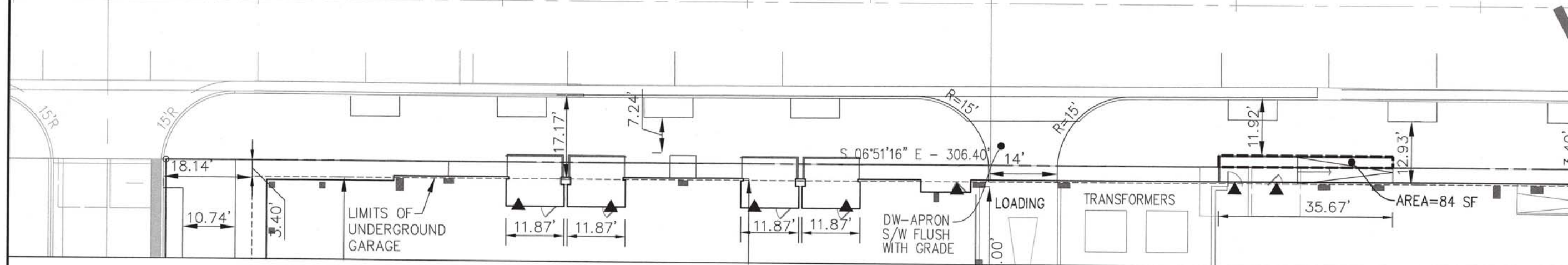
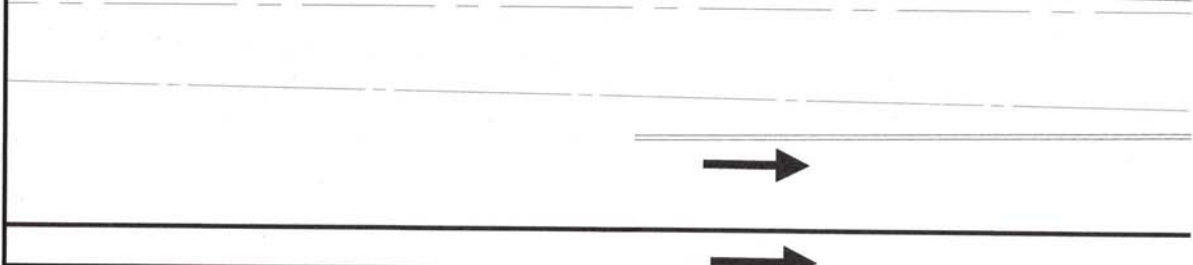


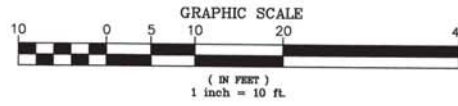
**MAIN LINE BOULEVARD**  
(VARIABLE WIDTH RIGHT-OF-WAY)



**JEFFERSON DAVIS HIGHWAY - U.S. ROUTE 1**  
(VARIABLE WIDTH RIGHT-OF-WAY)



- NOTES:
- SEE POTOMAC YARD PARTIAL LAND BAY I & PARTIAL LAND BAY J (PREVIOUSLY APPROVED DSUP # 2006-0018) PLAN DRAWINGS FOR DESIGN.
  - SEE POTOMAC YARD PARCEL LAND BAY I, PARTIAL LAND BAY J AND LAND BAY L (DSUP # 2008-0022) PLAN DRAWINGS FOR DESIGN.
  - SEE POTOMAC YARD MAIN STREET IMPROVEMENTS (PREVIOUSLY APPROVED DSUP # 2005-0039) FOR DESIGN EAST OF CONCEPTUAL LAND BAY I MULTI-FAMILY.
  - IMPROVEMENTS TO U.S. ROUTE 1 SHOWN BASED UPON 90% DESIGN DRAWINGS BY THE CITY OF ALEXANDRIA. LOCATION IS SCHEMATIC AND SUBJECT TO CHANGE AND ADJUSTMENT AS DESIGN OF THE 'BRT' IMPROVEMENTS PROCEED.



**CURVE TABLE**

CURVE	RADIUS	LENGTH	CHORD BEARING	CHORD	DELTA
C1	11.00'	14.35'	S 30°30'53" W	13.35'	74°44'17"
C2	261.00'	70.15'	S 75°35'03" W	69.94'	15°24'02"
C3	10.00'	15.69'	N 51°45'18" W	14.13'	89°55'16"

**APPROVED**  
SPECIAL USE PERMIT NO. 2012-0012  
DEPARTMENT OF PLANNING & ZONING

DIRECTOR \_\_\_\_\_ DATE \_\_\_\_\_

DEPARTMENT OF TRANSPORTATION & ENVIRONMENTAL SERVICES  
SITE PLAN NO. \_\_\_\_\_

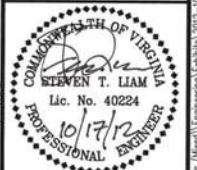
DIRECTOR \_\_\_\_\_ DATE \_\_\_\_\_

CHAIRMAN, PLANNING COMMISSION \_\_\_\_\_ DATE \_\_\_\_\_

DATE RECORDED \_\_\_\_\_

INSTRUMENT NO. \_\_\_\_\_ DEED BOOK NO. \_\_\_\_\_ PAGE NO. \_\_\_\_\_

STOOPS AND STAIR ENCROACHMENT EXHIBIT  
**POTOMAC YARD**  
LANDBAY J - MULTIFAMILY  
PRELIMINARY DEVELOPMENT SPECIAL USE PERMIT  
CITY OF ALEXANDRIA  
VIRGINIA



PLAN STATUS

08/03/12	POSUP 1st SUBMISSION
09/05/12	POSUP 2nd SUBMISSION
10/17/12	ENCROACHMENT EX REV

DATE	DESCRIPTION
MRS DESIGN	DMR DRAWN
	STL CHKD
SCALE	H: 1"=20'
	V: _____
JOB No.	6198-04-001
DATE :	JULY 2012
FILE No.	6198-D-PR-014

SHEET C13.00