

REGION UNITED

Metropolitan Washington Planning Framework for 2030



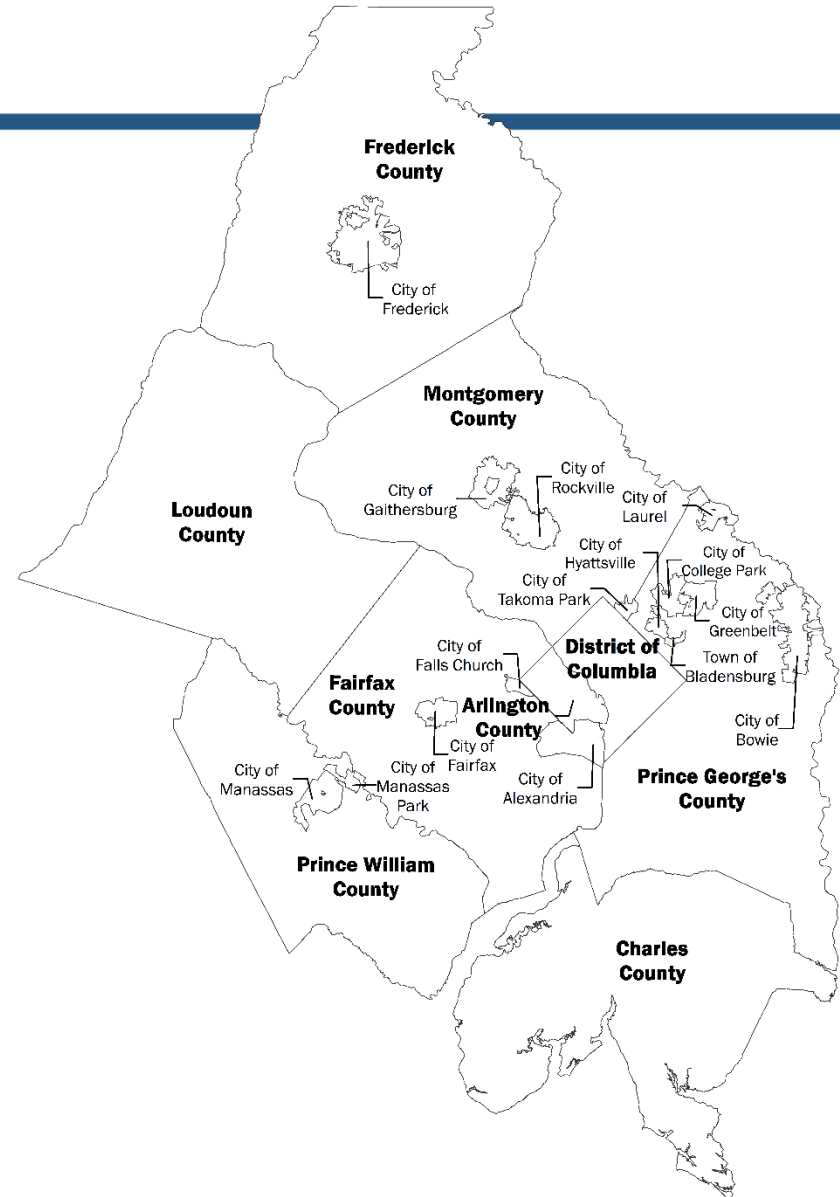
Advancing Equity,
Transportation, Housing,
and Climate Goals



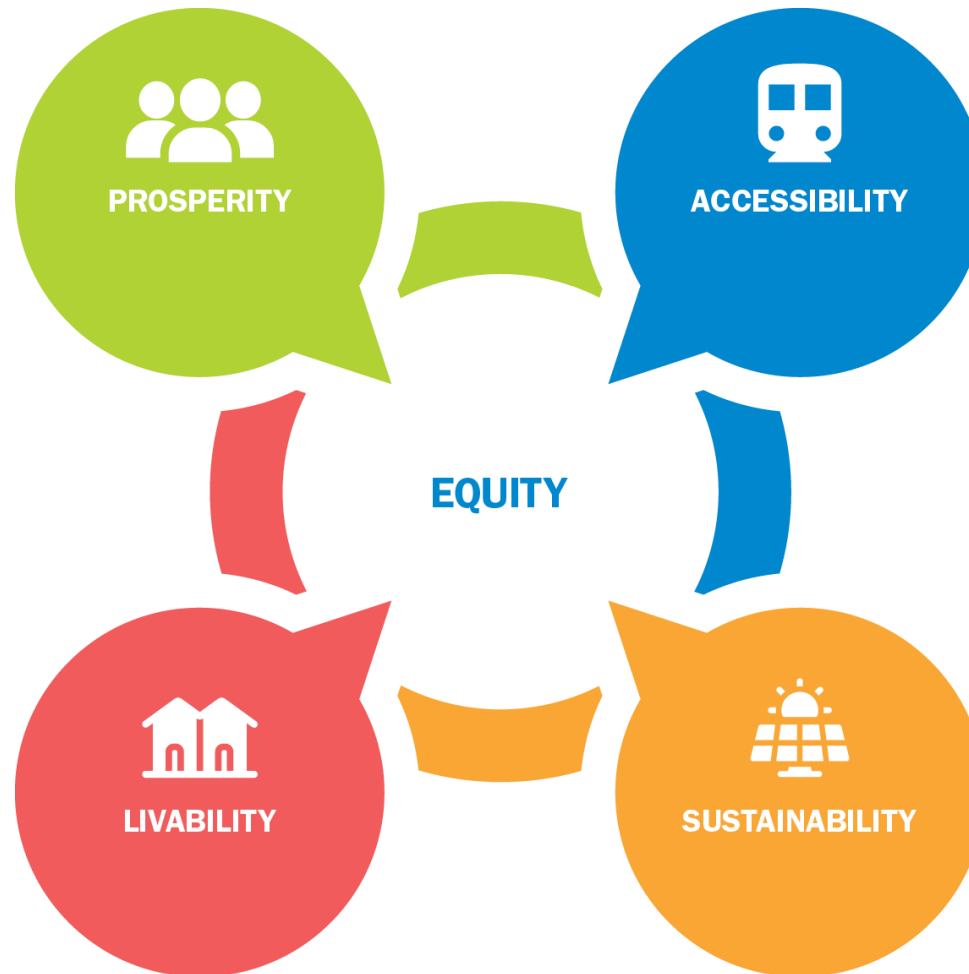
Metropolitan Washington
Council of Governments

About COG

- An independent, nonprofit association founded in 1957.
- Brings area leaders together to address regional issues.
- 300 elected officials from 24 local governments, the Maryland and Virginia state legislatures, and U.S. Congress.
- Home of the TPB, the region's Metropolitan Planning Organization.
- 125+ staff.



Region Forward Vision



Regional Mojo

Over the last decade, our region's achievements include:

- Unprecedented cooperation on economic development
- Historic investments in transit
- National recognition for walkable communities
- Significant air quality improvements



COG Board Planning Priorities

“If the challenges are interrelated, so are the solutions.”

1. Housing Targets (2019)
2. Climate Goal & Action Plan (2020)
3. High-Capacity Transit Station Areas (2021)
4. Equity Emphasis Areas (2021)

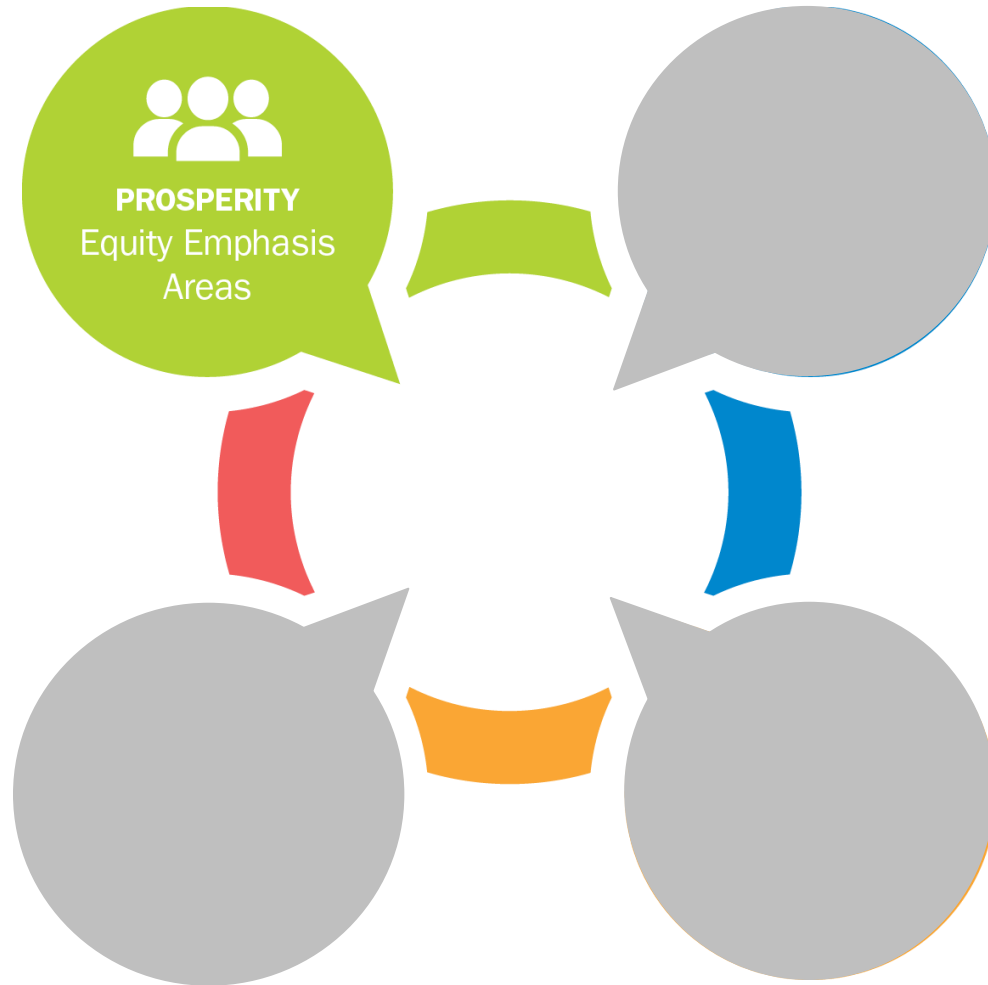


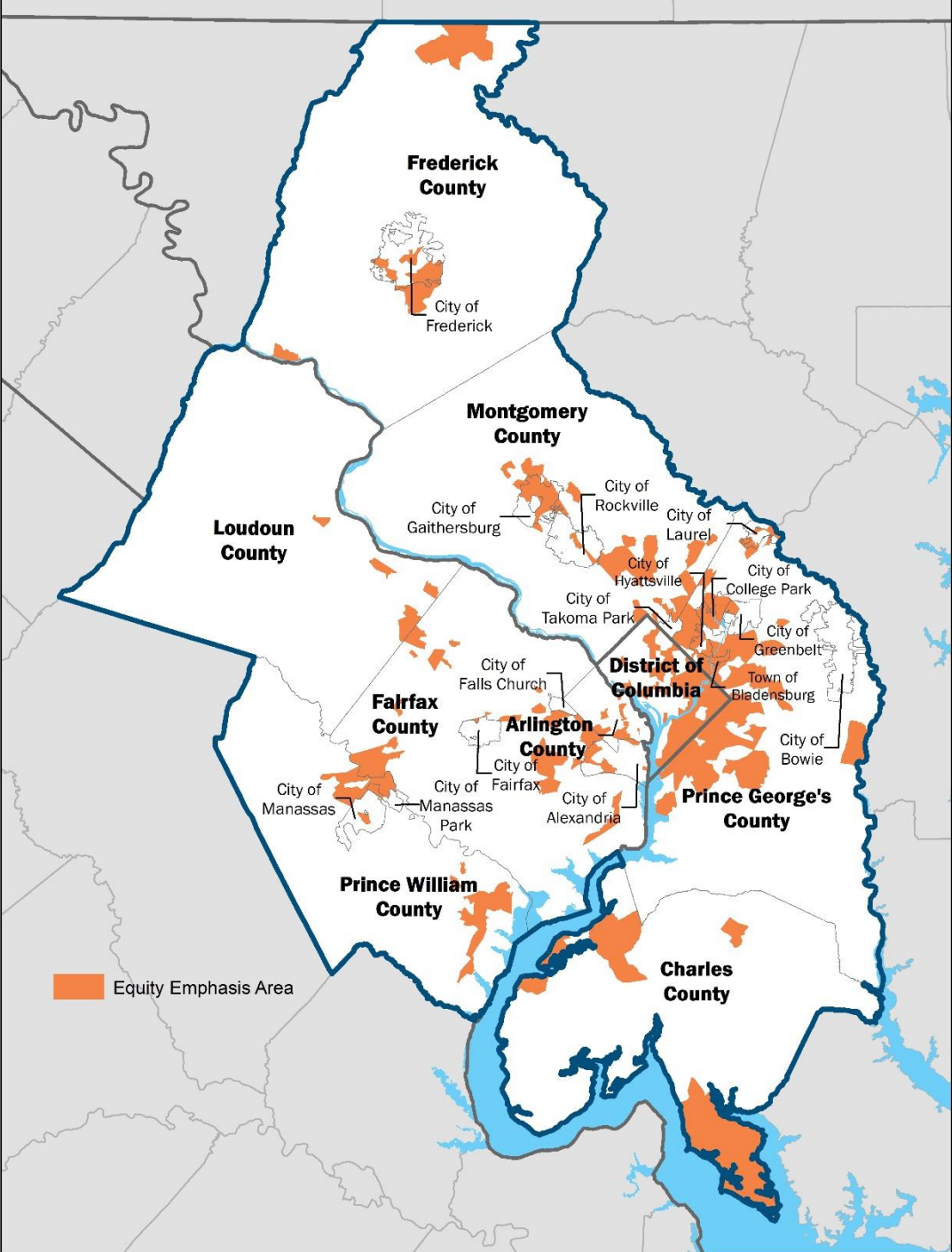
West Falls Church rendering (WMATA)

Framework for 2030



Advancing Shared Prosperity





Elevate 350 Equity Emphasis Areas (EEAs)

Areas with high
concentrations of
underserved residents.
mwcog.org/equityemphasisareas

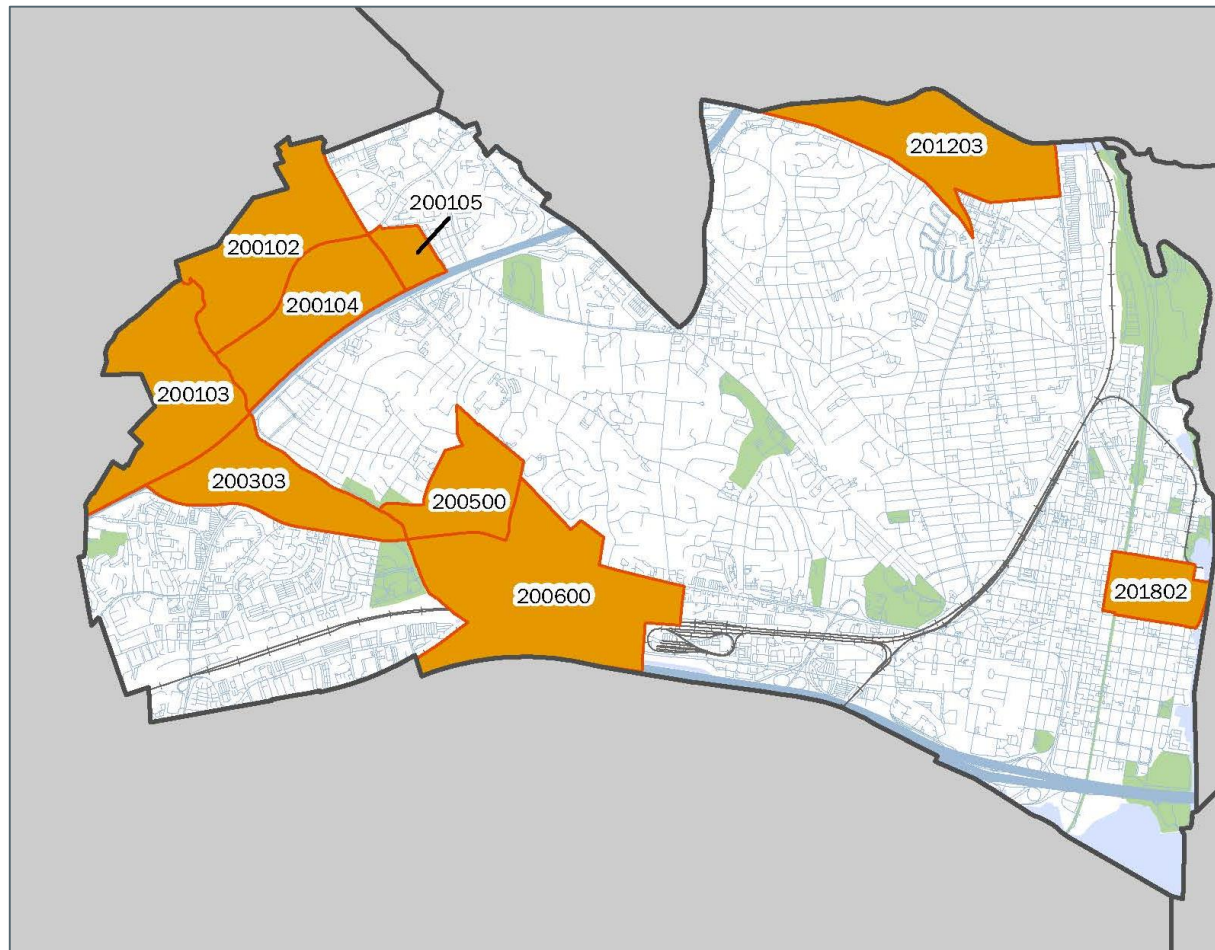
EEAs Located Regionwide

- Nearly **30 percent** of the region's population resides within EEAs.

Equity Emphasis Areas per Jurisdiction					
TPB Planning Area Jurisdiction	Number of EEAs	Total Population		Population within EEAs	
		#	%	#	%
District of Columbia	97	692,625	12.4%	373,236	24.0%
Charles County	5	159,428	2.9%	17,979	1.2%
Frederick County	9	251,422	4.5%	40,271	2.6%
Montgomery County	49	1,043,530	18.7%	259,093	16.6%
Prince George's County	103	908,670	16.3%	413,340	26.5%
Maryland Subtotal	166	2,363,050	42.3%	730,683	46.9%
City of Alexandria	9	157,613	2.8%	45,274	2.9%
Arlington County	12	233,460	4.2%	47,013	3.0%
Fairfax County	43	1,145,857	20.5%	215,246	13.8%
City of Fairfax	0	23,531	0.4%	0	0.0%
City of Falls Church	0	14,128	0.3%	0	0.0%
Loudoun County	5	395,134	7.1%	27,437	1.8%
City of Manassas	1	41,174	0.7%	7,609	0.5%
City of Manassas Park	1	16,986	0.3%	7,291	0.5%
Prince William County	17	467,886	8.4%	103,940	6.7%
Fauquier Co. UZA portion	0	35,928	0.6%	0	0.0%
Virginia Subtotal	88	2,531,697	45.3%	453,810	29.1%
Total	351	5,587,372	100.0%	1,557,729	100.0%



EEAs in Alexandria



Broader Application of EEAs

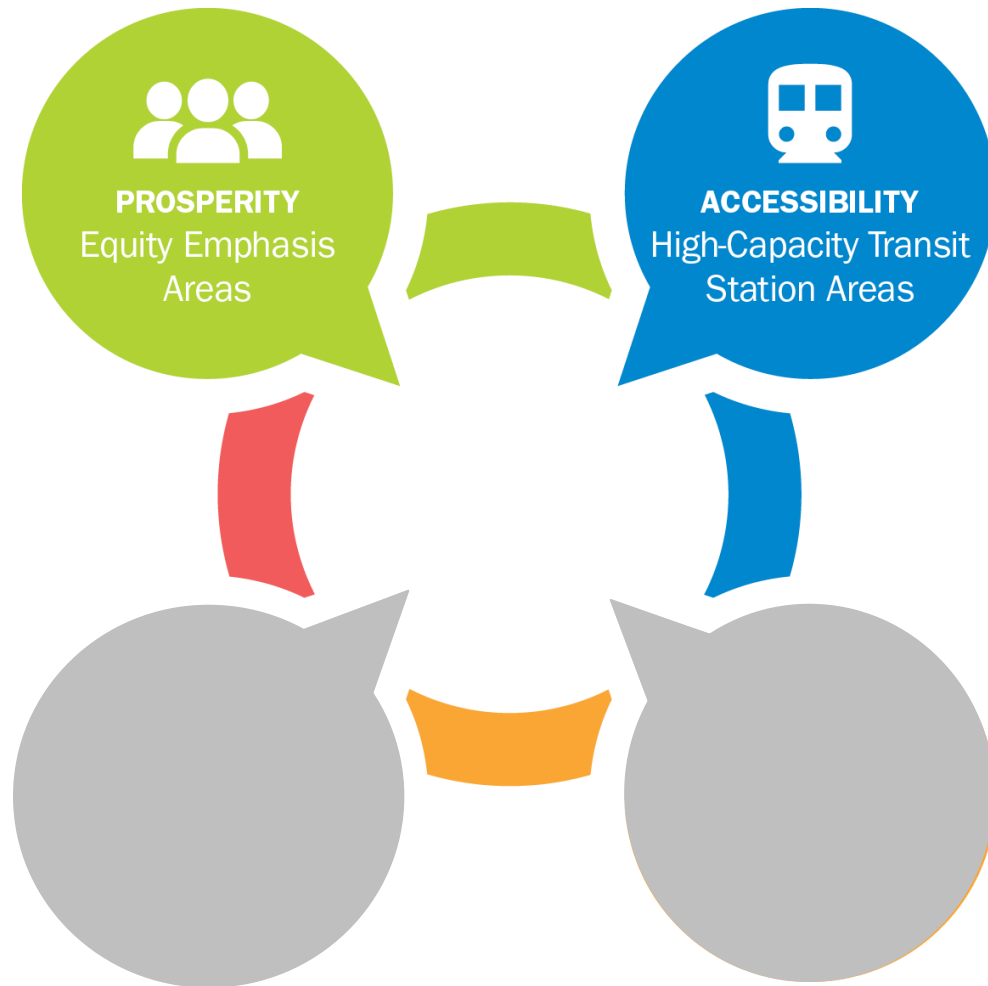
- EEAs to be used broadly in local/regional planning activities:

- Roadway Safety
- Housing
- Health
- Public Safety
- Climate and Energy
- Economic Opportunities



Virginia Commonwealth University: Health Equity Brief for COG

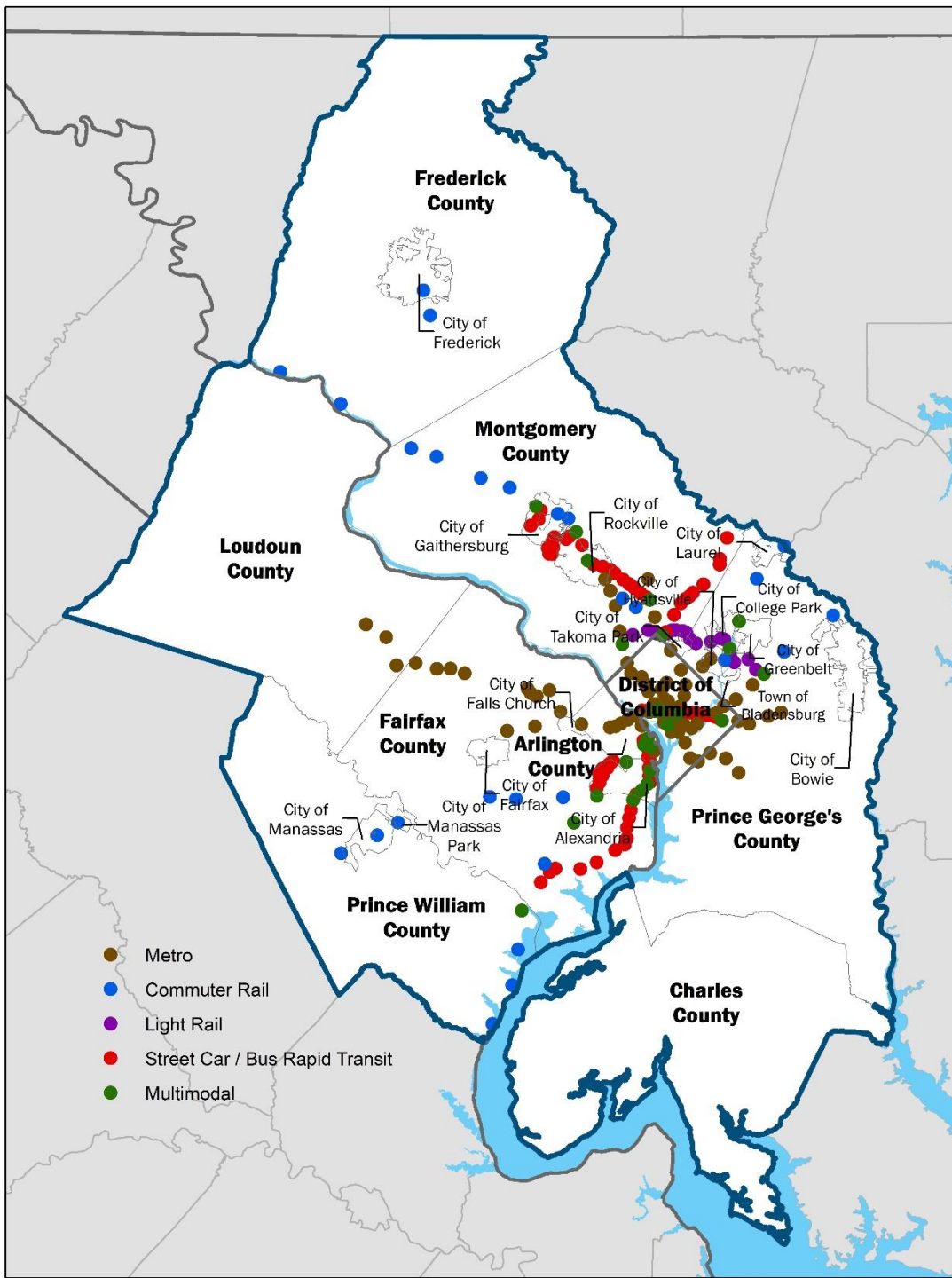
Advancing Accessibility



Optimize 225 High-Capacity Transit Station Areas (HCTs)

Locations around Metrorail, Commuter Rail, Light Rail, Bus Rapid Transit (BRT), and Streetcar.

mwcog.org/highcapacitytransit



HCTs by Jurisdiction/Mode

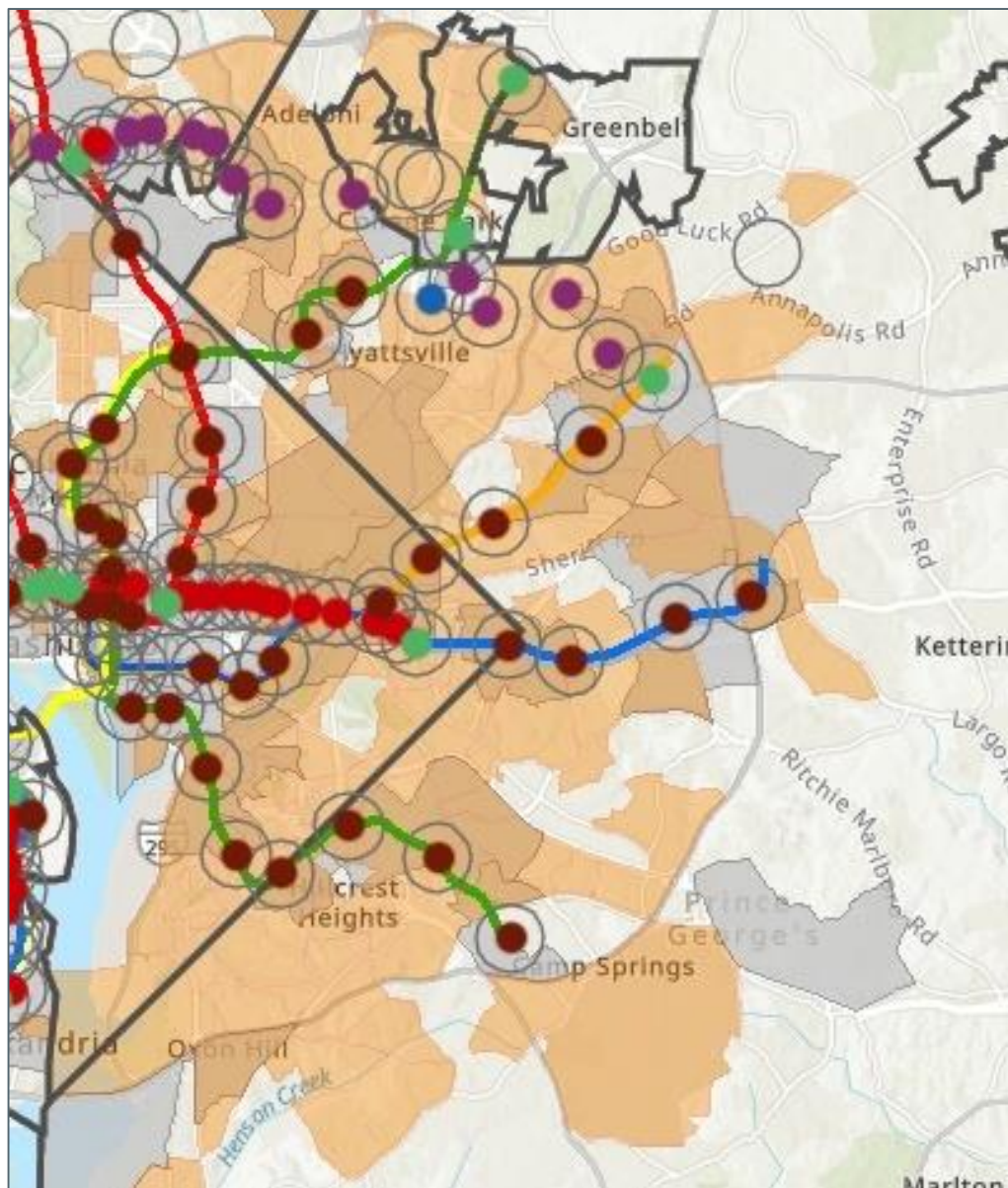
JURISDICTION	Total	Commuter Rail	Light Rail	Metro Rail	Multi System	Streetcar / BRT
City of Alexandria	21			1	4	16
Arlington County	19			8	3	8
City of College Park	5		3		2	
District of Columbia	55			34	6	15
Fairfax County	29	4		11	3	11
Frederick County	3	3				
City of Frederick	1	1				
City of Gaithersburg	6	1			1	4
City of Greenbelt	1				1	
City of Laurel	1	1				
Loudoun County	3				3	
City of Manassas	1	1				
City of Manassas Park	1	1				
Montgomery County	46	7	8	5	4	22
Prince George's County	23	4	6	12	1	
Prince William County	5	4			1	
City of Rockville	7	1			1	5
City of Takoma Park	1		1			
Regional Total*	225	27	17	75	26	80

* The Greenbelt, Takoma/Langley Transit Center and Van Dorn HCTs are located on jurisdictional boundaries. The Greenbelt HCT is in the cities of Greenbelt and College Park, Takoma/Langley Transit Center HCT is in the City of Takoma Park and Prince George's County and Van Dorn Street HCT is in the City of Alexandria and Fairfax County. These stations appear in their respective jurisdictional totals but are not double counted in the regional totals. (Updated January 3, 2022)

Optimize HCTs = Transit-Oriented Communities

- Enhance land use around stations:
 - Housing, offices, and shopping.
- Improve access to stations and nearby amenities:
 - Pedestrian and bicycle projects.
 - Bikeshare, e-scooter.
 - Microtransit services.





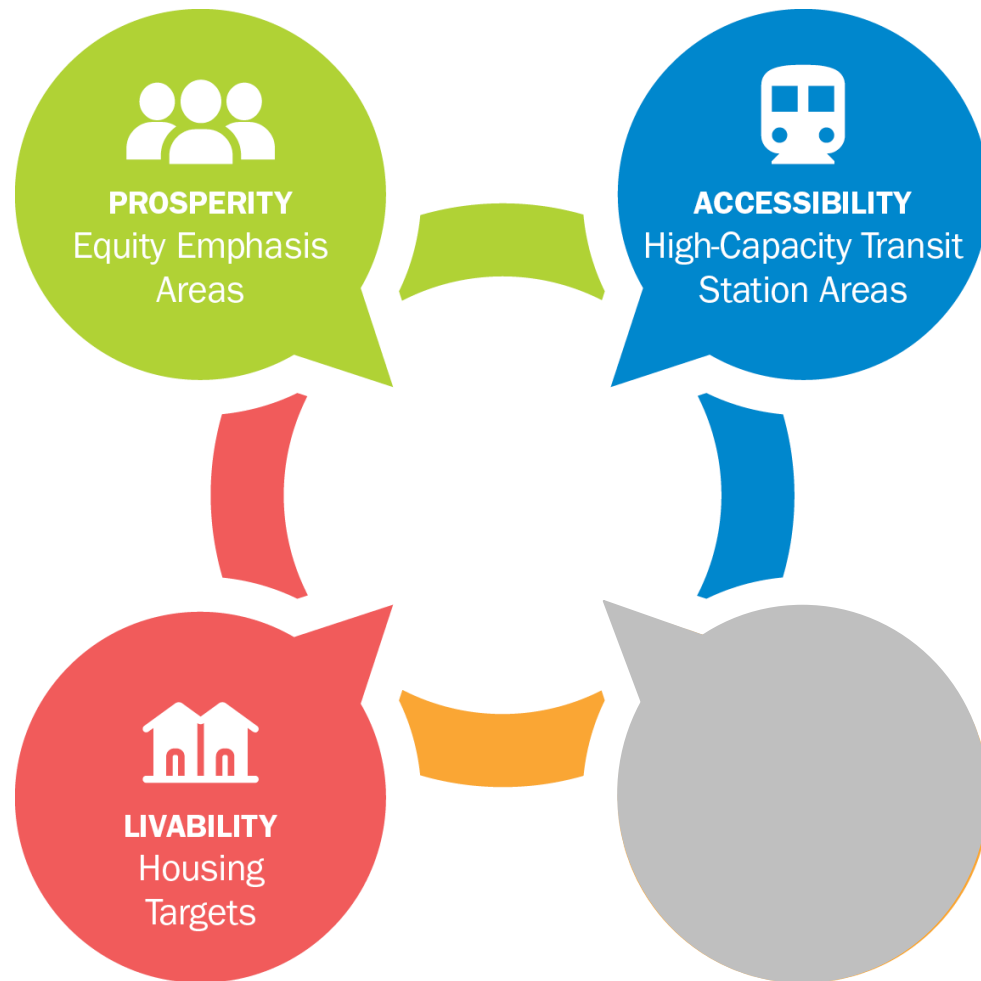
Cross-cutting: Transit & Equity

168 HCTs overlap with an
Equity Emphasis Area.

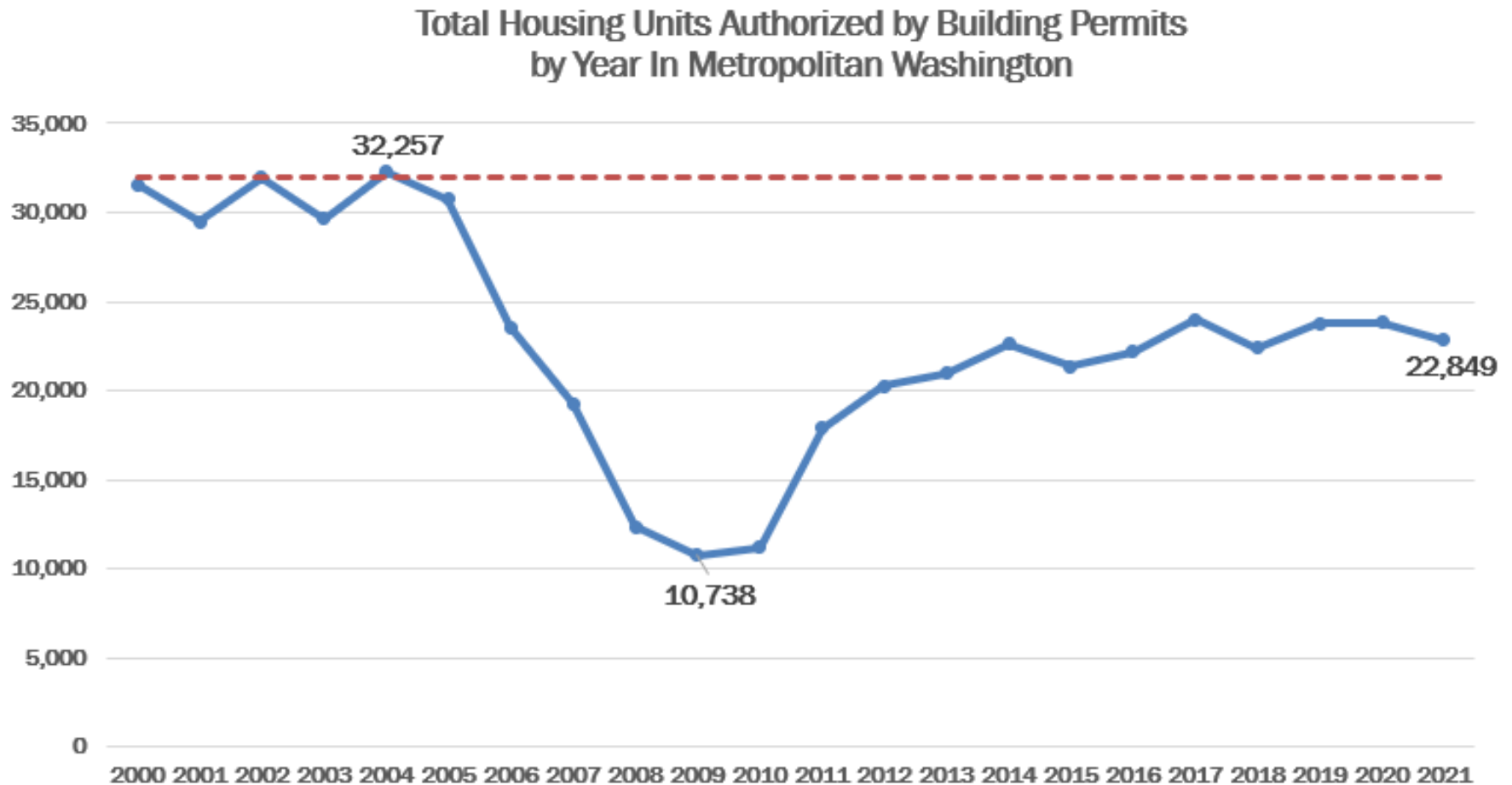
214 EEAs overlap with a
High-Capacity Transit Station
Area.



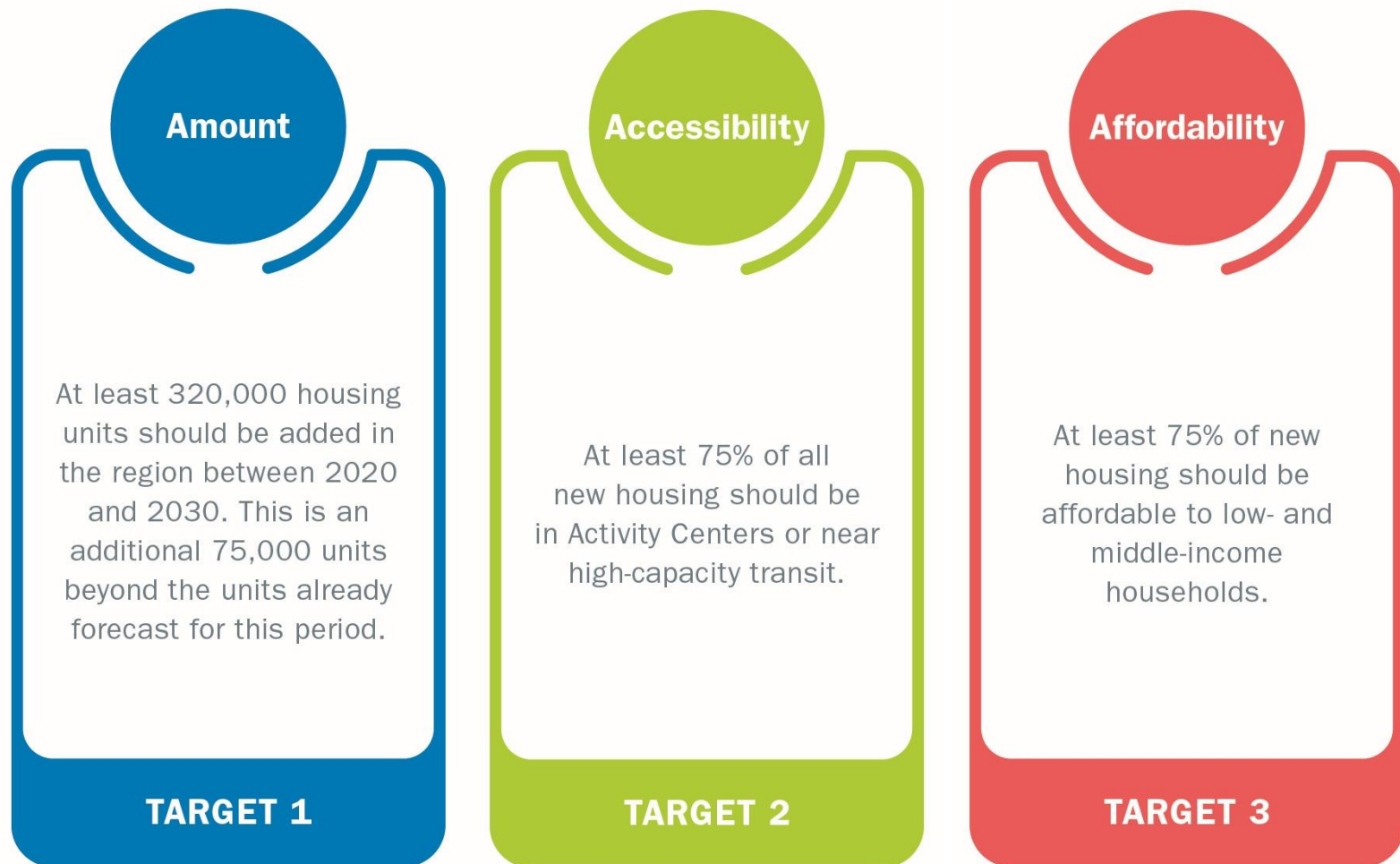
Advancing Livability



The Region Still Needs More Housing



Regional Housing Targets

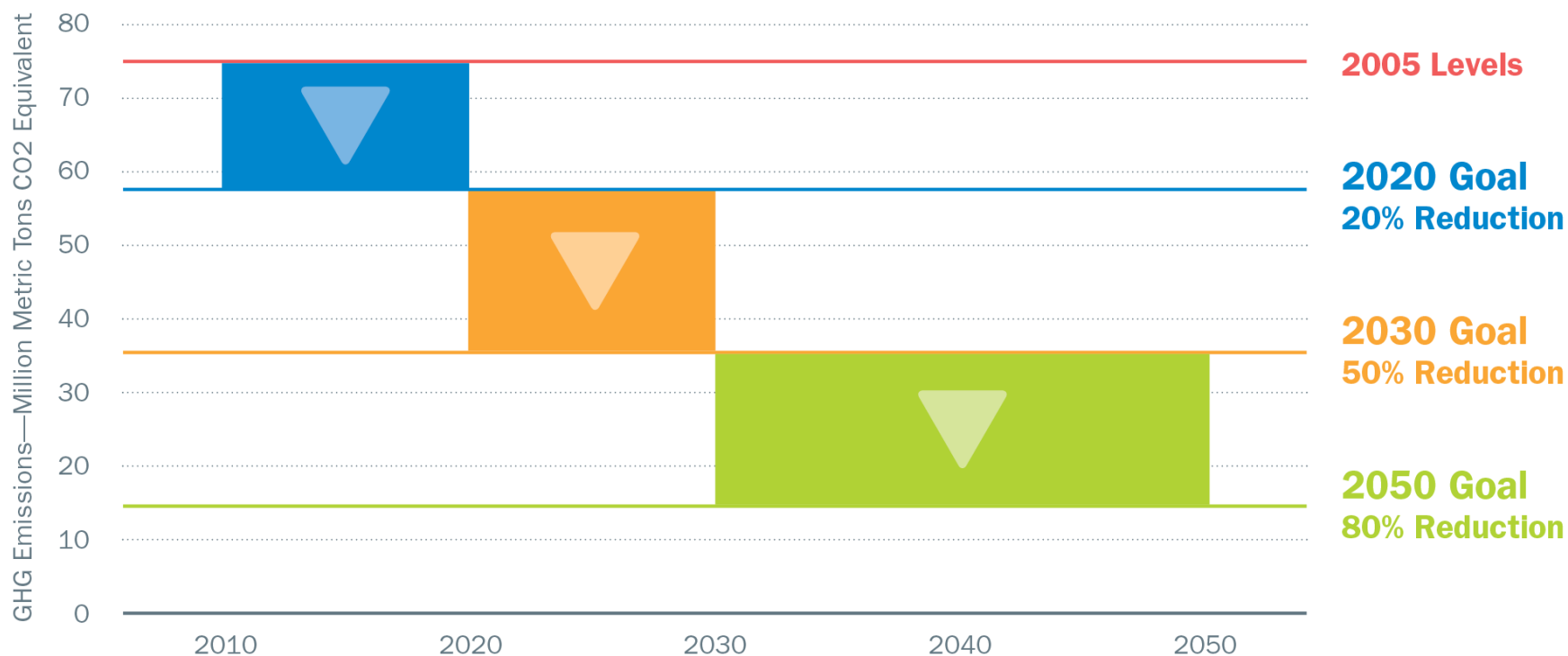


Advancing Sustainability

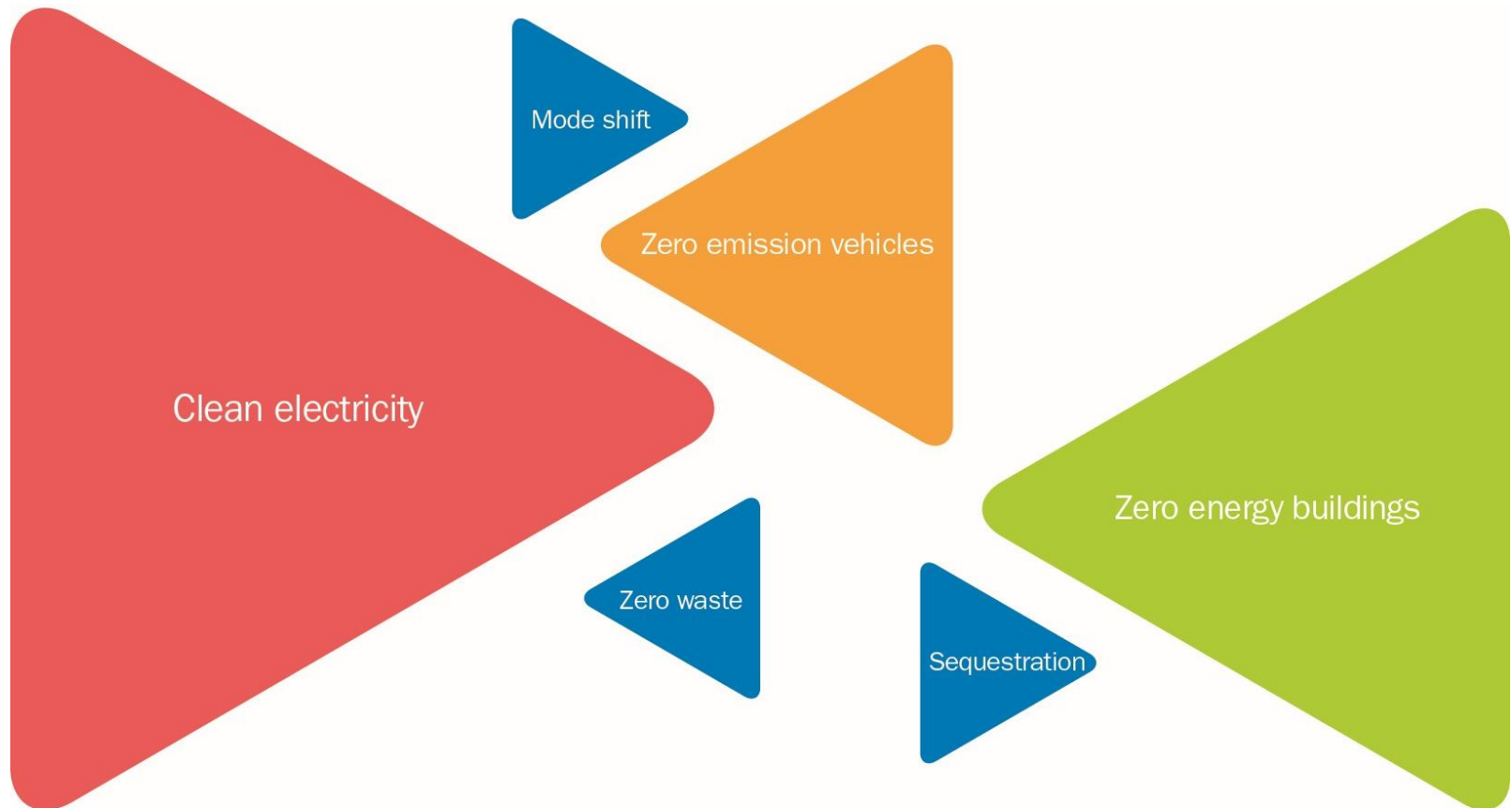


Regional Climate Goals

Metropolitan Washington GHG Emissions Reduction Goals

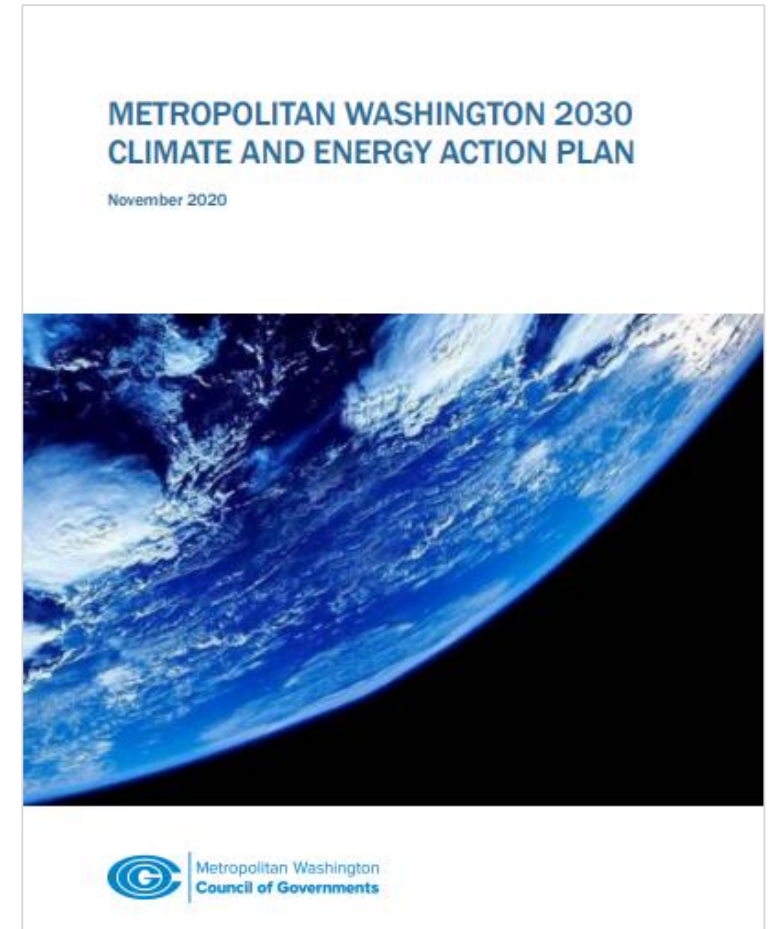


What Would It Take to Meet the 2030 Goal?



Cross-cutting: Climate, Equity, Transit, and Housing

- *2030 Climate and Energy Action Plan* identified equity-focused actions the region must take in pursuit of its climate goals.
 - Prioritizing sustainable energy access for all residents.
 - Increased transit use and fewer solo drivers.
 - More housing options that use less energy.



Accelerating Action

➤ Targeted Grants/Technical Assistance

- Housing Affordability Planning Program; Transit Within Reach; Transportation Land-Use Connections (TLC) Program.
- Climate/energy planning; Zero emission vehicles coordination.

➤ Forward-focused Strategies

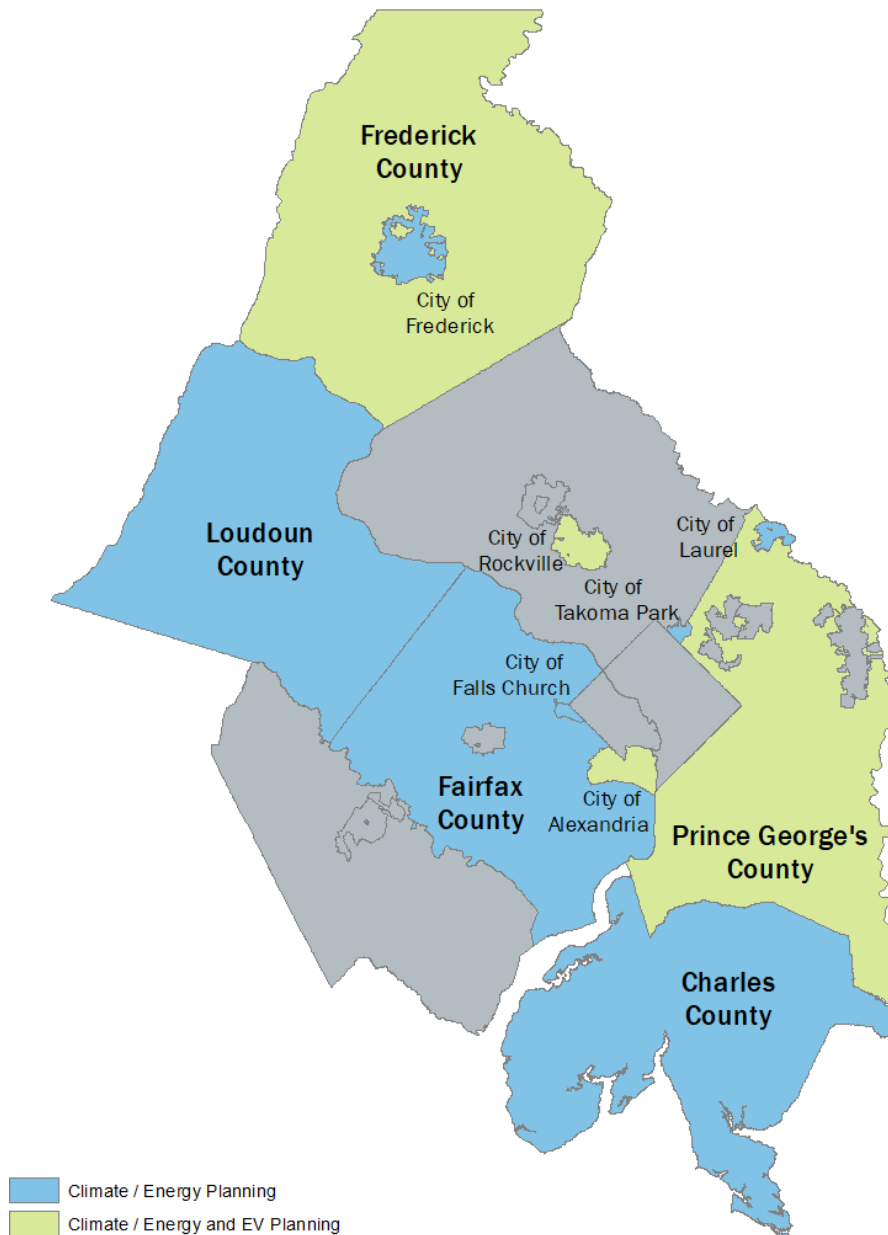
- Climate and Energy Action Plan; Housing Equity Plan; Visualize 2045 Aspirational Initiatives.

➤ Maps/Tools/Professional Development

- Maps and data; Housing Messaging Playbook; Climate Partners website; Racial equity professional development.

Local Climate & Energy Technical Assistance

COG is supporting local climate and energy action plans and electric vehicle (EV) fleet policies and plans.



Climate / Energy Planning
Climate / Energy and EV Planning



Metropolitan Washington
Council of Governments

Housing Targets/D.C. & Alexandria

- District of Columbia
 - Mayor's Order on housing – 36K new units by 2025
- City of Alexandria
 - Adoption of regional share of housing targets - 11,500 new units by 2030



The Residences at St. Elizabeths East (Flaherty & Collins Properties)

Housing Affordability Planning Program

- COG-administered program made possible through Amazon Housing Equity Fund.
- Up to \$75,000 grants to local governments and non-profit developers engaged in affordably-priced housing near transit.
- \$650,000 for 10 local planning initiatives and development projects. (approved in June 2022)



Congress Heights Metro Residential (DC/NHT Communities)

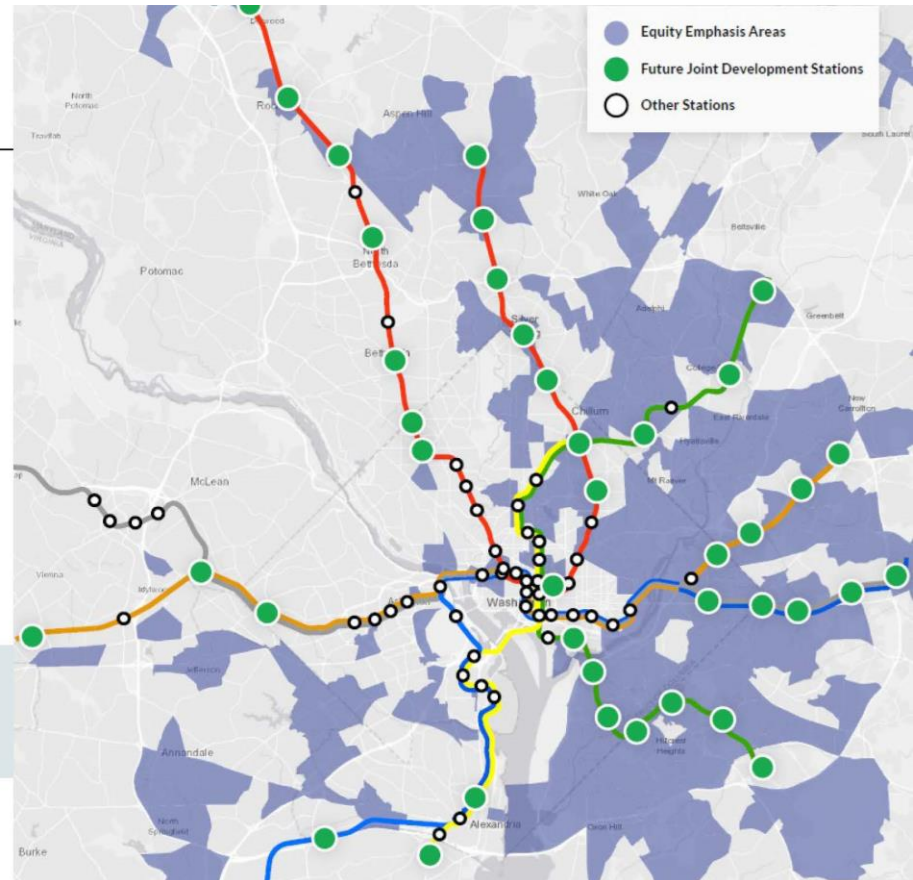
HCTs & EEAs/WMATA

Future Opportunity

Further opportunities for equitable development

- Attracts investment to underserved communities
- Increases housing production & delivers new affordable housing in transit-accessible locations
- Supports access to critical services & amenities

70% of future JD sites are in Equity Emphasis Areas defined by MWCOG



Strategic Plan for Joint Development (WMATA)

EEAs/Montgomery County

- Montgomery County application of EEAs
 - County Council Resolution
 - Capital Improvement Program (CIP) budget
 - prioritizes projects
 - Green Bank
 - Shovel Our Sidewalks Act
 - Transit access planning (Purple Line)



Chuck Bean

COG Executive Director

(202) 962-3260

cbean@mwkog.org

777 North Capitol Street NE, Suite 300
Washington, DC 20002

[mwkog.org/2030 framework](http://mwkog.org/2030-framework)



Metropolitan Washington
Council of Governments