



DRAFT FY 2023 Long Range Planning Interdepartmental Work Program

Planning Commission January 4, 2022

City Council January 25, 2022

DRAFT FY 2023 Work Program



Internal Staff Work Community Engagement Public Hearing

MAJOR PLANS/PROJECTS		CY 2022				CY 2023			
		FY 2022		FY 2023		FY 2023		FY 2023	
		Q3 Jan-Mar	Q4 Apr-Jun	Q1 Jul-Sep	Q2 Oct-Dec	Q3 Jan-Mar	Q4 Apr-Jun	Q1 Jul-Sep	Q2 Oct-Dec
PZ LED									
1	Community Engagement Update-Action Plan (PZ, TES, RPCA, CMO, AHD, DCHS, Alex. Library)								
2	Zoning for Housing (PZ, Housing)								
	Co-Living								
	Conversions and Housing Unit Density in Commercial Zones								
	Density Height								
	Accessory Apartments								
	Townhomes								
3	Old Town North Power Plant CDD (PZ, TES, Housing, RPCA, AEDP)								
4	Old Town North Linear Park Rail Conversion								
5	Eisenhower East CDD Update (PZ, TES, RPCA, Housing)								
6	Zoning Text Amendments (PZ, Code, TES)								
7	Arlandria Zoning Implementation (PZ)								
8	Eisenhower West CDD (PZ, TES, RPCA, Housing)								
9	City Strategic Plan Update (PZ, TES, RPCA, Housing, OCPI, DCHS)								
10	Alexandria West Plan Update (PZ, TES, Housing, RPCA, AEDP)								
11	Next Planning Process TBD								
TES LED									
12	FEMA Floodplain Remapping and Ordinance Revisions/Effective Changes (TES, PZ, OH)								
13	Update Water Quality Management Supplement to the Master Plan (TES, PZ)								
14	Stormwater Management Resiliency Master Plan (TES, PZ, DPI, OEM)								
15	Chesapeake Bay Phase 3 Total Maximum Daily Load (TMDL) 100% Action Plan (TES, DPI, PZ, GS, ACPS)								
16	Duke Street Transitway (Conceptual Planning, Environmental & Design) (TES, DPI, PZ)								
17	Lower King Street Closure (TES, PZ, DPI, RPCA)								
18	TMP Reform (TES, PZ, CAO)								
19	Beauregard Ellipse Analysis & Concept Design (TES, PZ)								
20	Update City's Multimodal Transportation Study Guidelines and Standards								
21	Curbside Management for Food Trucks (TES, PZ, CAO)								
22	Parking Standards Evaluation & Update (TES, PZ, OH)								
RPCA LED									
23	Public Open Space Policy Plan (RPCA, PZ, TES, DPI)								
24	Action Plan for Vibrancy & Sustainability at Torpedo Factory Art Center (CMO, RPCA, GS, AEDP, PZ)								
25	Recreation Center Facilities Standards and Landscape Plans (RPCA)								
26	Urban Forestry Master Plan Update (RPCA, PZ, TES)								
27	Parks and Recreation Master Plan Update (RPCA, PZ, TES)								
28	Citywide Parks Improvement Plan Update (RPCA, PZ, TES)								
29	Dog Park Master Plan Update (RPCA, TES, DPI, PZ)								
30	Cameron Run Regional Park Feasibility Study (RPCA, TES, PZ)								
OH LED									
31	ARHA Redevelopment/Repositioning – Sites #1 and #2 (ARHA, Housing, PZ)								
32	Housing Master Plan Update (Housing, PZ)								
33	Inclusionary Zoning Policy (Housing, PZ)								

Strategic Plan

KEY OBJECTIVES

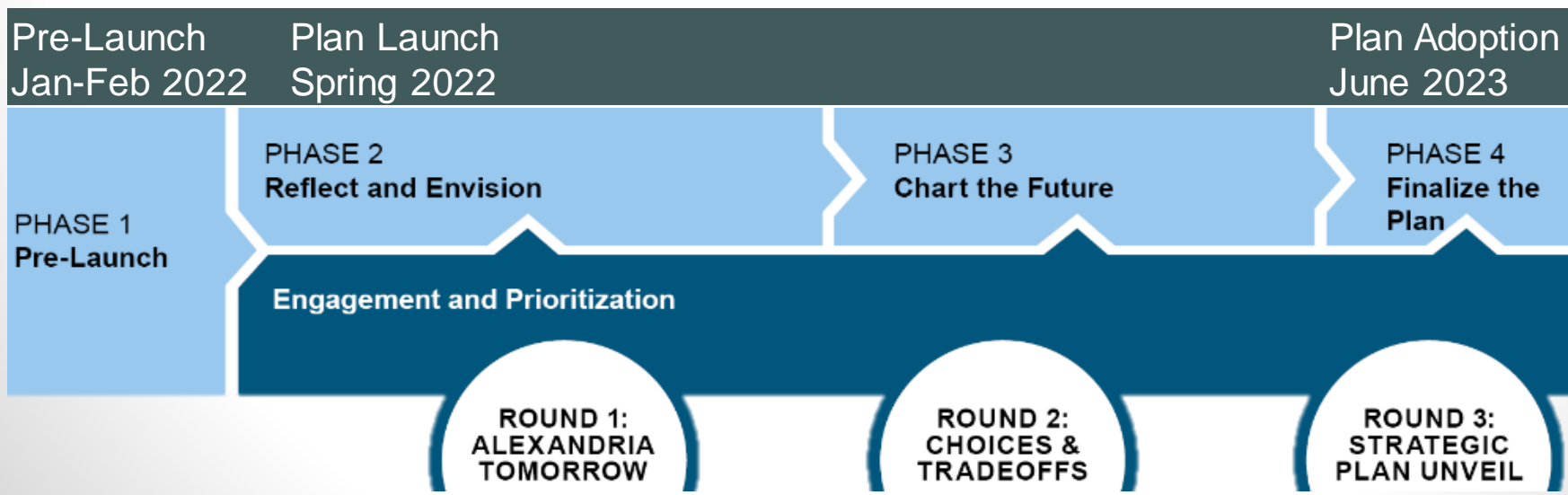
1. Create a plan that works for all Alexandrians
2. Confirm a long-term vision & goals
3. Create a document and framework that is useful
4. Develop implementable strategies
5. Establish a logical method for prioritization
6. Create metrics that reflect community values & track progress
7. Map out a logical plan lifecycle

Engagement Strategy

- Equitable, inclusive, citywide
- Intentional diversity of engagement methods
- Lessons learned
- Target key stakeholders

Schedule

- Achieve appropriate balance between completing the Plan quickly and robust engagement



-



Zoning Updates

- Small Business Updates
- Accessory Structures
- Sign Ordinance
- Subdivision Regulations
- King Street Outdoor Dining Standards



Zoning for Housing

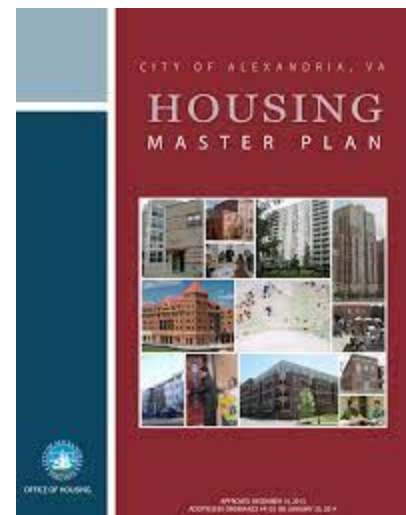
Phase 1 - underway

- Co-living Policy
- Conversions and Housing Unit Density in Commercial Zones
- Density Height
- Townhome Zones Reconciliation
- Accessory Apartments

Phase 2 prioritization to be discussed – Spring 2022

Housing Affordability Initiatives

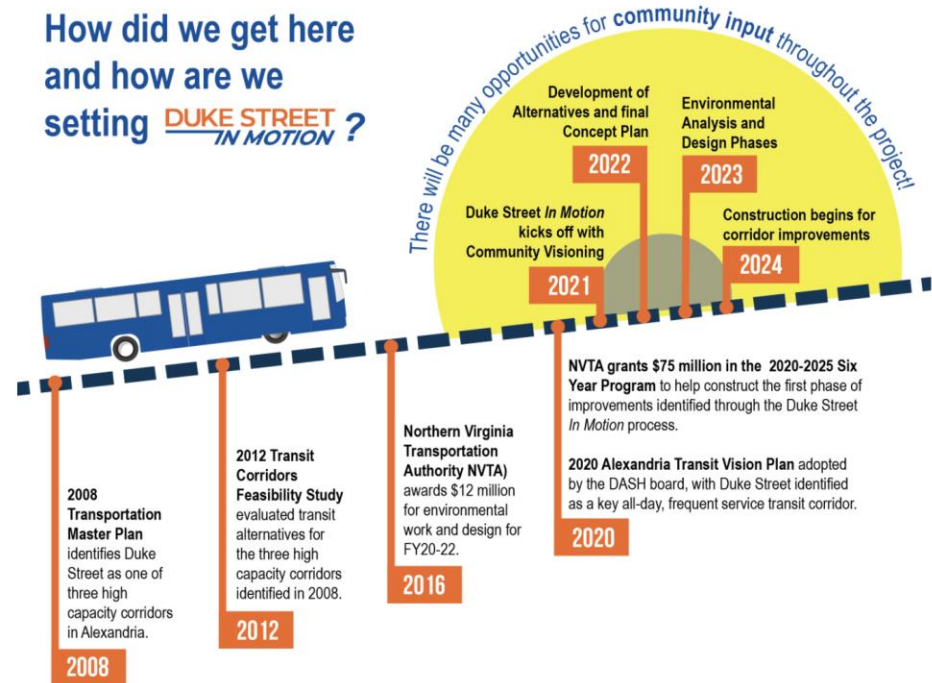
- ARHA Redevelopment and Repositioning
 - Samuel Madden
 - Ladrey Senior Highrise
- Housing Master Plan Update
- Inclusionary Zoning—Internal research to resume late CY23, stakeholder engagement through Summer CY24
- Regional Housing Initiative Project Pipeline



TES-Planning Duke Street Transitway

- Community Engagement FY22:
 - Finalize Vision
 - Appoint Ad Hoc Committee*
 - Begin concept planning
- Community Engagement FY23:
 - Finalize concept design*
 - Begin environmental and operations planning
 - Approve Final design*

*Council Action



Lower King

Unit Block Pilot – FY22

- Council action in early FY23 to include in full design

Planning for final design of Lower King Street & Unit Block

- Q1-2 Community Engagement, design planning
- Q3 – Internal design work
- Q4 – Board, Commission & Council approval of design

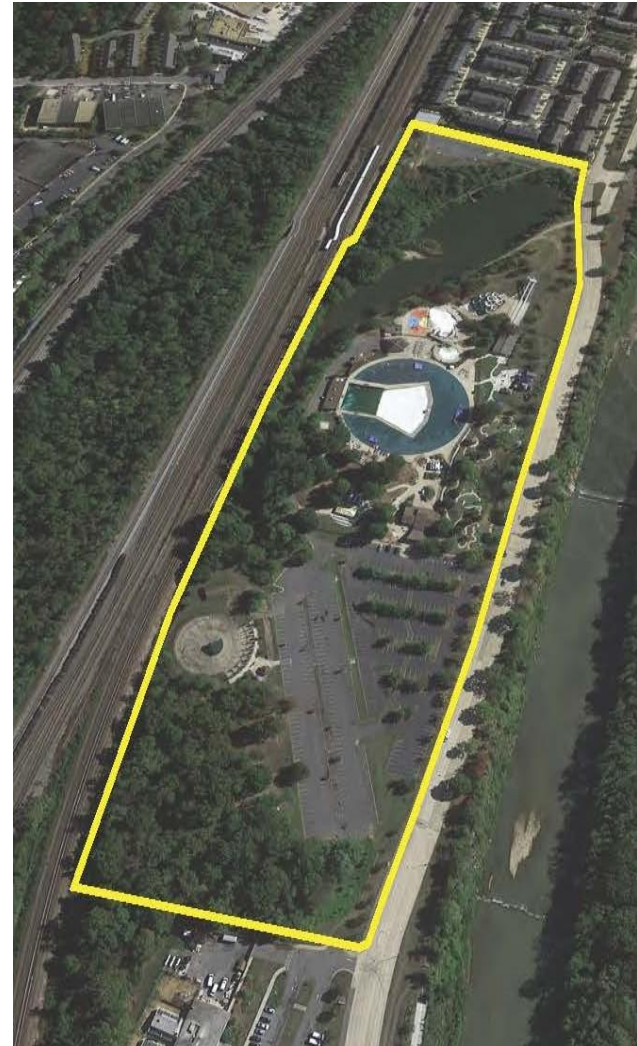


TES Stormwater Management

- FEMA Floodplain Remapping and Ordinance Revisions/Effective Changes
 - Maps June 2022; Ordinance Oct 2022
- Update Water Quality Management Supplement to the Master Plan
- Chesapeake Bay Phase 3 Total Maximum Daily Load (TMDL) 100% Action Plan
 - Develop FY2023; Effective July 1, 2023
- Stormwater Management Resiliency Master Plan
 - Begin development end FY2022; multiyear

RPCA

- Public Open Space Policy Update
- Citywide Parks Improvement Plan Update
- Park & Recreation Master Plan Update
- Urban Forestry Master Plan Update
- Cameron Run Regional Park Feasibility Study



Next Steps

- Feb 16:
Proposed FY 2022 Budget
- Feb–April:
Continued staff coordination + community outreach
- May 5:
City Council Budget Adoption
- May:
PC and CC consider final work program

MAJOR PLANS/PROJECTS	CY 2022							
	FY 2022		FY 2023		FY 2023		FY 2023	
	Q3 Jan-Mar	Q4 Apr-Jun	Q1 Jul-Sep	Q2 Oct-Dec	Q3 Jan-Mar	Q4 Apr-Jun	Q1 Jul-Sep	Q2 Oct-Dec
PZ LED								
1 Community Engagement Update-Action Plan (PZ, TES, RPCA, CMO, AHD, DCHS, Alex. Library)								
2 Zoning for Housing (PZ, Housing)								
Co-Living								
Conversions and Housing Unit Density in Commercial Zones								
Density Height								
Accessory Apartments								
Townhomes								
3 Old Town North Power Plant CDD (PZ, TES, Housing, RPCA, AEDP)								
4 Old Town North Linear Park Rail Conversion								
5 Eisenhower East CDD Update (PZ, TES, RPCA, Housing)								
6 Zoning Text Amendments (PZ, Code, TES)								
7 Arlandria Zoning Implementation (PZ)								
8 Eisenhower West CDD (PZ, TES, RPCA, Housing)								
9 City Strategic Plan Update (PZ, TES, RPCA, Housing, OCP, DCHS)								
10 Alexandria West Plan Update (PZ, TES, Housing, RPCA, AEDP)								
11 Next Planning Process TBD								
TES LED								
12 FEMA Floodplain Remapping and Ordinance Revisions/Effective Changes (TES, PZ, OH)								
13 Update Water Quality Management Supplement to the Master Plan (TES, PZ)								
14 Stormwater Management Resiliency Master Plan (TES, PZ, DPI, OEM)								
15 Chesapeake Bay Phase 3 Total Maximum Daily Load (TMDL) 100% Action Plan (TES, DPI, PZ, GS, ACPS)								
16 Duke Street Transitway (Conceptual Planning, Environmental & Design) (TES, DPI, PZ)								
17 Lower King Street Closure (TES, PZ, DPI, RPCA)								
18 TMP Reform (TES, PZ, CAO)								
19 Beauregard Ellipse Analysis & Concept Design (TES, PZ)								
20 Update City's Multimodal Transportation Study Guidelines and Standards								
21 Curbside Management for Food Trucks (TES, PZ, CAO)								
22 Parking Standards Evaluation & Update (TES, PZ, OH)								
RPCA LED								
23 Public Open Space Policy Plan (RPCA, PZ, TES, DPI)								
24 Action Plan for Vibrancy & Sustainability at Torpedo Factory Art Center (CMO, RPCA, GS, AEDP, PZ)								
25 Recreation Center Facilities Standards and Landscape Plans (RPCA)								
26 Urban Forestry Master Plan Update (RPCA, PZ, TES)								
27 Parks and Recreation Master Plan Update (RPCA, PZ, TES)								
28 Citywide Parks Improvement Plan Update (RPCA, PZ, TES)								
29 Dog Park Master Plan Update (RPCA, TES, DPI, PZ)								
30 Cameron Run Regional Park Feasibility Study (RPCA, TES, PZ)								
OH LED								
31 ARHA Redevelopment/Repositioning – Sites #1 and #2 (ARHA, Housing, PZ)								
32 Housing Master Plan Update (Housing, PZ)								
33 Inclusionary Zoning Policy (Housing, PZ)								