



Alexandria Mobility Plan

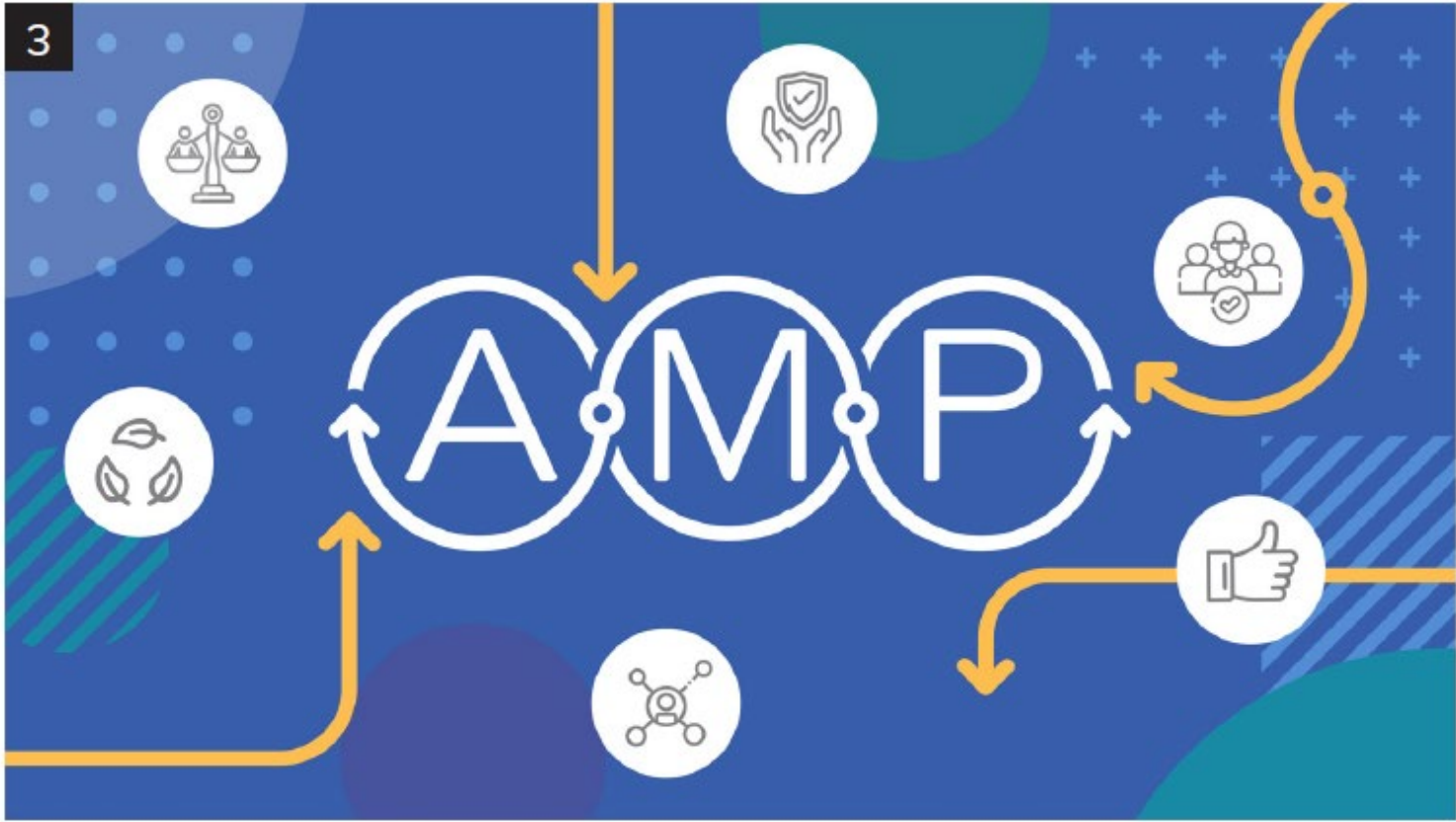
Master Plan Amendment #2021-00011

City Council

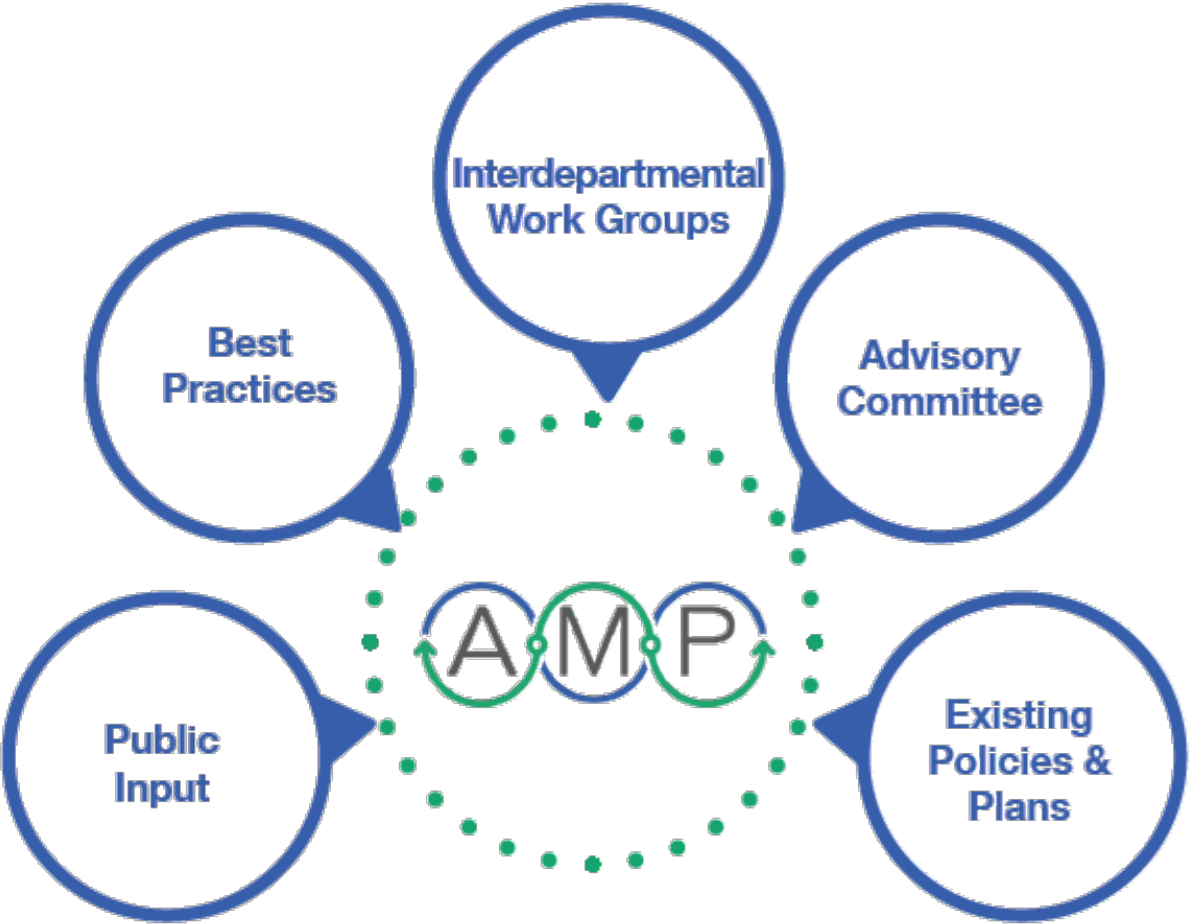
October 16, 2021



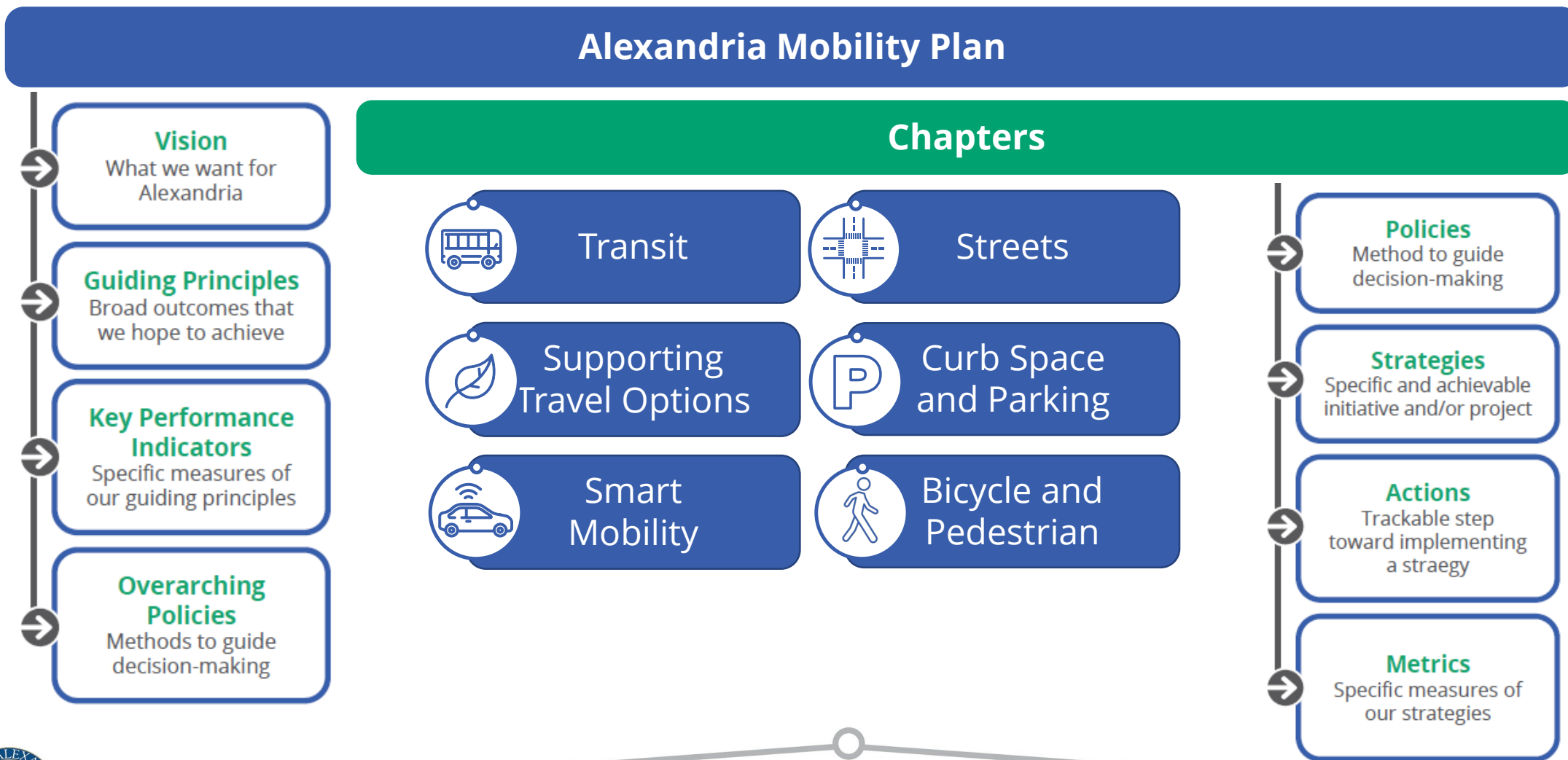
What is the AMP?



Plan Inputs



Plan and Chapter Components



Addressing Community Concerns

1

Concern about ***cut-through traffic*** and ***congestion*** on local streets

2

Desire for ***more and better travel choices***, particularly ***transit***

3

Need for ***transportation equity***

Vision

**Safe, seamless,
and connected
mobility options
foster a thriving
Alexandria for all**



Guiding Principles



ACCESS Alexandria



Accessible

Alexandria will work to make its transportation network **easily accessible for users of all ages and abilities.**



Connected

Alexandria's transportation system will take you where you want to go seamlessly by **leveraging technology and integrating transportation and land use.**



Convenient

Alexandria will provide a transportation system with high-quality mobility options that are **reliable, frequent, proximate, and comfortable.**



Equitable

Alexandria acknowledges that there are disparities in neighborhoods and populations in the City that have been historically underserved. Alexandria will be **targeted, inclusive, and intentional in addressing gaps in mobility options** available, their quality, and safety.



Safe

Alexandria will **eliminate all traffic deaths and serious injuries by 2028.**



Sustainable

Alexandria will **prioritize low-carbon mobility options** and **reduce automobile dependency.**



Overarching Policies

1

Apply early and ongoing **equity** focus

2

Incorporate **flexibility and adaptability**

3

Be proactive and **data-driven**

4

Develop **partnerships** that advanced shared goals

Key Strategies

- To improve *travel choices*, the City will:
 - Implement *Alexandria Transit Vision Plan* and **Transitway corridors**
 - Support the creation of **mobility hubs in strategic locations** to connect public transit with other multimodal and shared transportation options
 - Expand **ferry options** for better access by water to different destinations
 - Use technology and other measures to **make parking easier** to find.



Key Strategies

- To **manage congestion**, the City will:
 - Expand **smart and adaptive signal technology** to improve traffic flow
 - Develop targeted **programs, incentives, and education** to encourage people to travel by means other than driving alone
 - Add **more frequent and efficient bus service** to attract new ridership reducing the number of cars on the road
 - Advocate regionally for policies that will **reduce cut-through traffic** in Alexandria
 - Improve **regional connectivity of transit**



Key Strategies

- To advance **transportation equity**, the City will:
 - **Evaluate transit fare policy** to ensure access for people of all means
 - Add more **frequent, all-day bus service** citywide, but particularly in the West End
 - Create **parking policies to support housing affordability** and **ensure greater access for persons with limited mobility**
 - Use data to **ensure that resources are distributed equitably**



Outcomes

Measurable progress towards achieving Guiding Principles

Accessible



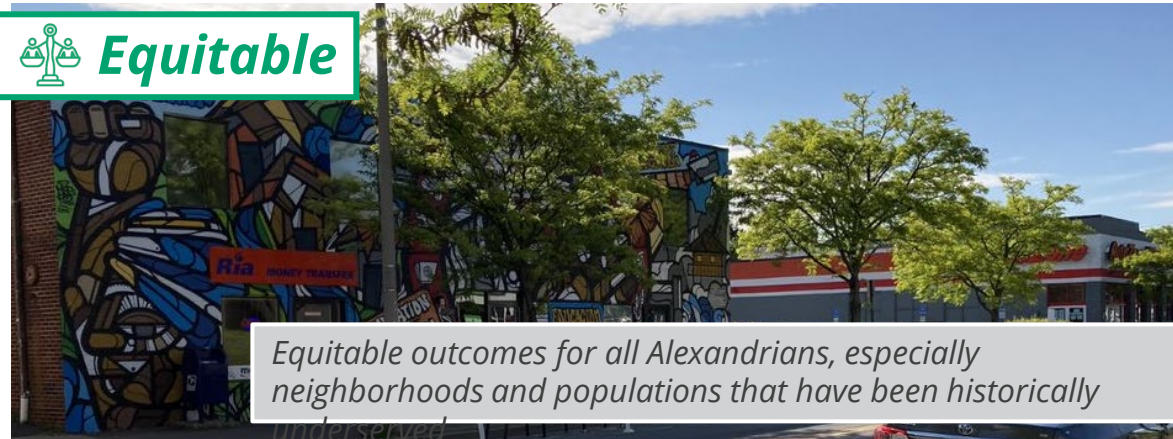
Increased access to high-quality transportation choices for all Alexandrians

Convenient



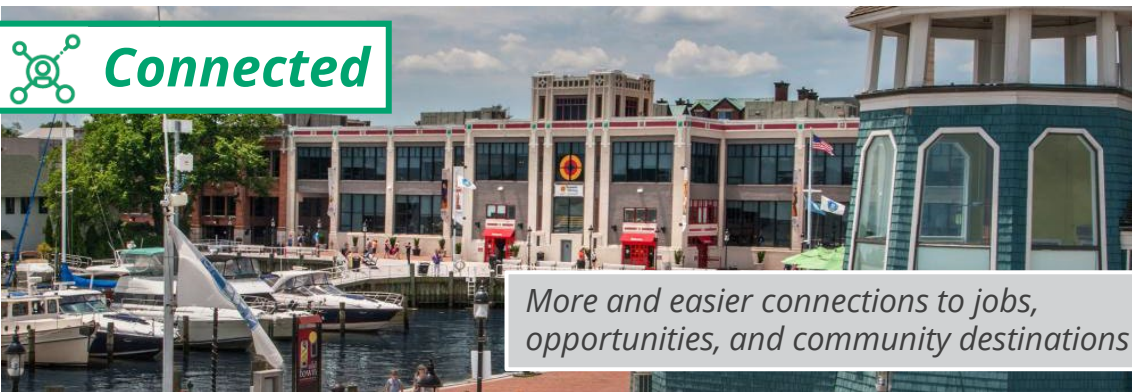
Better overall experience getting around the City

Equitable



Equitable outcomes for all Alexandrians, especially neighborhoods and populations that have been historically underserved

Connected



More and easier connections to jobs, opportunities, and community destinations

Safe



Reduced number and severity of crashes

Sustainable



Increase in non-single occupant vehicle commuting

Key Changes from the Draft Plan

- New strategy focused on **maintaining our roadways** proactively and equitably (Streets chapter)
- New strategy to **promote electric vehicle usage** (Parking and Curb Space chapter)
- **Inclusion of adopted pedestrian, bicycle** (from the 2016 Pedestrian and Bicycle Plan Update), **and transit networks** (Transit and Pedestrian and Bicycle chapter)
- Greater emphasis of **traffic management strategies** (Smart Mobility chapter)
- Recognition of **autonomous vehicles** as a potential disrupter to ensure that Alexandria will be prepared from a policy perspective (Smart Mobility chapter)

Key Changes from the Draft Plan

- Adjustments to metrics:
 - Additional metrics related to **ADA accessibility, transit travel times, and minority/low income/senior breakdown for more metrics**
 - Addition of **baseline information** (existing conditions) and stronger connections to **metrics and already-established targets from other City plans**
- Addition of Implementation Appendix to **track plan progress, established new targets, and developed time horizons**
- Addition of intention to **update the plan by the end of 2030**



Transportation Commission – September 29, 2021

Supported by Planning Commission with addition of the word "County" – October 5, 2021

Strategy 2. Build out the city's priority transitway corridors and identify improvements on congested, high ridership corridors to reduce travel times and improve reliability

- Advance the design and construction of the West End Transitway and evaluate its success to determine whether dedicated lanes or other methods to improve speed and reliability are needed
- Extend the dedicated infrastructure for the Route 1 Metroway corridor to connect to the new Potomac Yard Metrorail station and into Arlington

Recommend to add:

- *Explore connecting Alexandria's transitways with high-capacity transit corridors in Fairfax County to help create a more reliable and efficient regional bus network.*



Development Related Strategies

Strategy 3. Ensure new development minimizes negative impacts to the street network



Actions

- Update guidance for developers to better reflect City goals through traffic impact studies and best practices from around the country
- Require improved data collection and reporting after implementation
- Ensure proper consideration of all users through improved methods for measuring service levels for all modes and safety impacts on our transportation network
- Encourage study methodologies and mitigation measures such as transportation demand management programs and street design changes that place higher priority on local trips rather than regional trips to help reduce cut-through traffic

Strategy 3. Reconsider parking requirements in new developments

Actions

- Build upon recent efforts to right-size parking for residential and commercial development, recognizing that increased parking leads to increased traffic
- Review shared parking section of the zoning and ordinance to identify opportunities to make shared parking more viable. For example, a bank that closes at 5:00 PM and a restaurant that opens at 5:00 PM may be able to share parking facilities
- Leverage the ability of new data sources to regularly evaluate parking uses and trends
- Increase the percentage of parking spaces in new developments that can support electric vehicle charging

Next Steps

Adopted Plan

- Continued engagement with the community, stakeholders, and elected officials
- Identify and pursue funding for projects
- Implement strategies
- Work with our partners
- Track and report on progress
- Adapt based on performance



Recommendation

- That the City Council approve resolution MPA 2021-00011 to amend the Transportation Master Plan chapter of the 1992 Master Plan, replacing the chapter in its entirety with the Alexandria Mobility Plan