

# Rushmark South Tower Extension

2927 & 2957 Eisenhower Avenue  
**DSUP#2024-10002**

---

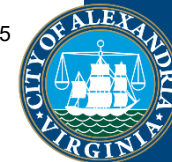
Planning Commission  
June 24, 2024

Note: This presentation is subject to changes prior to hearing.



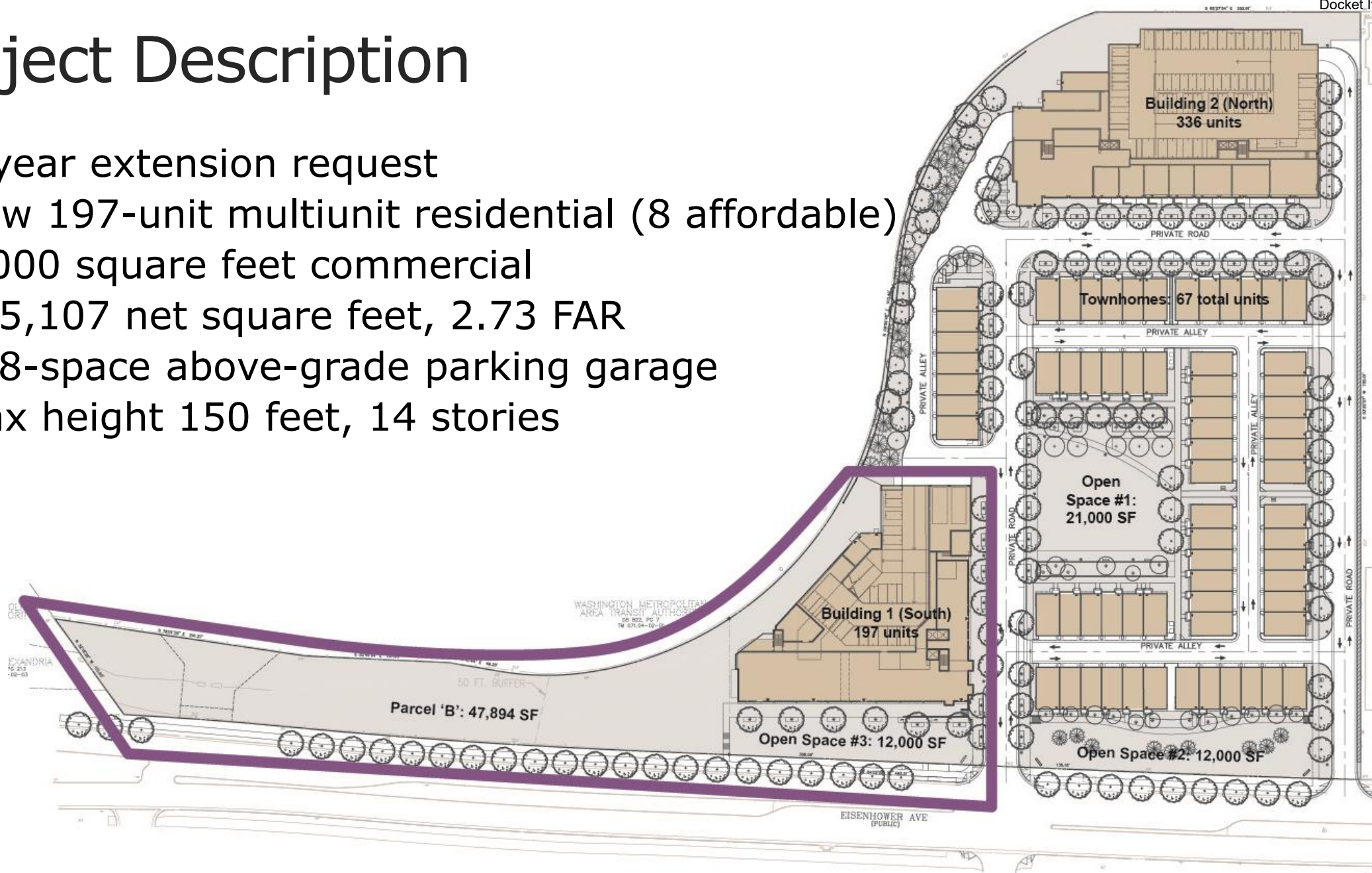
# Project Location

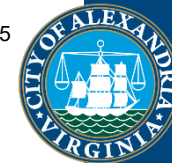




# Project Description

- 3-year extension request
- New 197-unit multiunit residential (8 affordable)
- 9,000 square feet commercial
- 335,107 net square feet, 2.73 FAR
- 248-space above-grade parking garage
- Max height 150 feet, 14 stories





# Project Benefits & Conclusion

## ***Considerations***

- Stormwater quality improvements and quantity reductions
- Student generation: 8 students
- Multimodal transportation access
- Community outreach

## ***Benefits***

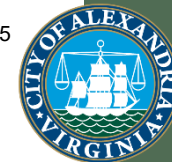
- 8 on-site affordable housing units (60% AMI)
- \$596,182 contribution to affordable housing trust fund
- Public art contribution (\$75,000)
- Streetscape improvements and enhanced open space
- Capital bikeshare station (installed)

## ***Recommendation***

Staff recommends **approval** of the requests subject to the conditions in the report.



**East Elevation**



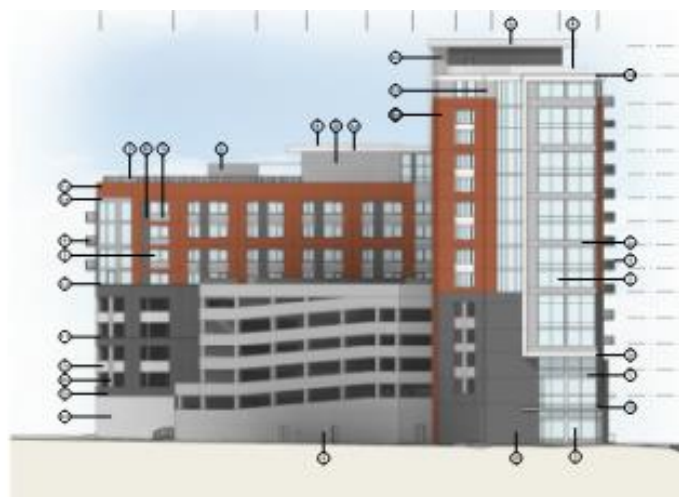
# Architecture & Elevations



**South Elevation**



**North Elevation**



**West Elevation**



**East Elevation**