

The background is a dark blue gradient with intricate, concentric, wavy lines in various shades of blue. A prominent, lighter blue square logo with a stylized 'M' is positioned in the center-left. In the top right corner, the word 'MOMENTUM' is written in large, bold, white capital letters. Below it, the word 'metro' is written in a smaller, white, lowercase sans-serif font, followed by the tagline 'The Next Generation of Metro' in an even smaller white font.

MOMENTUM

metro The Next Generation of Metro

strategic plan 2013-2025

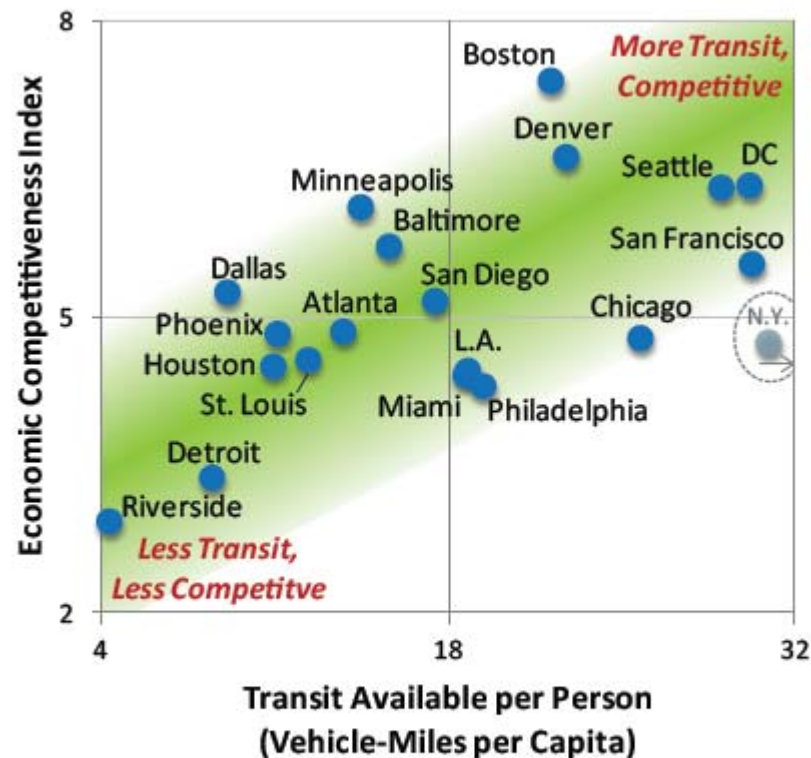
Metro & Economic Development

- Metrorail land area is 1.2% of the region's land base
- This land captured 14% of all jobs and 13% of office jobs over the last 10 years
- Most of these jobs were private sector, high-wage jobs

Metro & Economic Development

- Maryland
 - Jurisdictions recognize \$355M in annual property tax revenue from Metro-adjacent property, of which \$23M is directly attributable to Metro
 - Maryland's Metro riders save \$185M per year on average because they take public transit
 - Without Metro, Maryland would spend \$1.2B on roads
- Virginia
 - Jurisdictions recognize \$470M in annual property tax revenue from Metro-adjacent property, of which \$23M is directly attributable to Metro
 - Residents who ride Metro save \$122 million annually
 - Without Metro, Virginia would spend \$1.4B on roads and \$360M on parking
- The District
 - Recognizes \$2.26B in property tax revenue from Metro-adjacent property, of which \$178M is directly attributable to Metro
 - Without Metro, the District would have to spend \$2B on road construction and \$2.5B on parking structures.

Metro & Economic Development



Sources: Metro Area Competitiveness Report, Beacon Hill Institute 2007
NTD Vehicle Revenue Miles (2007) per UZA Population

Metro & Economic Development



2,600 Teachers per year



3,200 Firefighters per year



3,200 Librarians per year



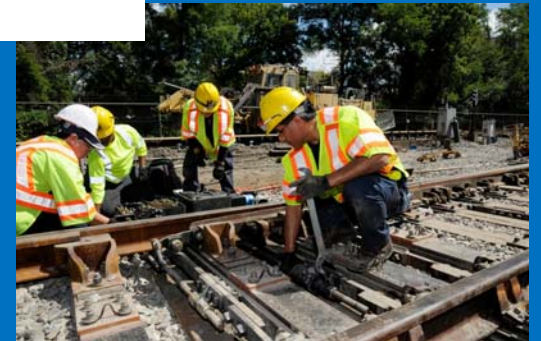
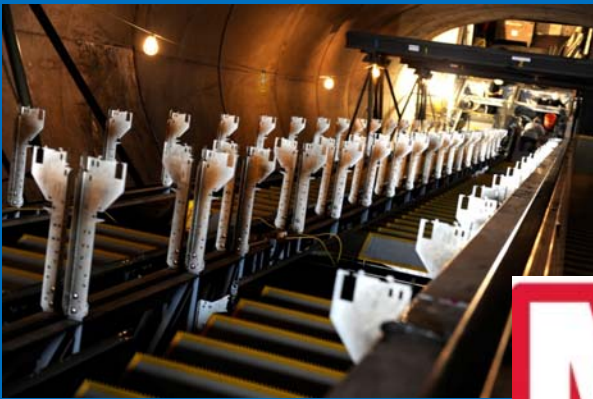
1,500 Police Officers per year



6.4 Elementary Schools per year

Rebuilding the Foundation

Metro Forward: \$5 billion, six-year investment program



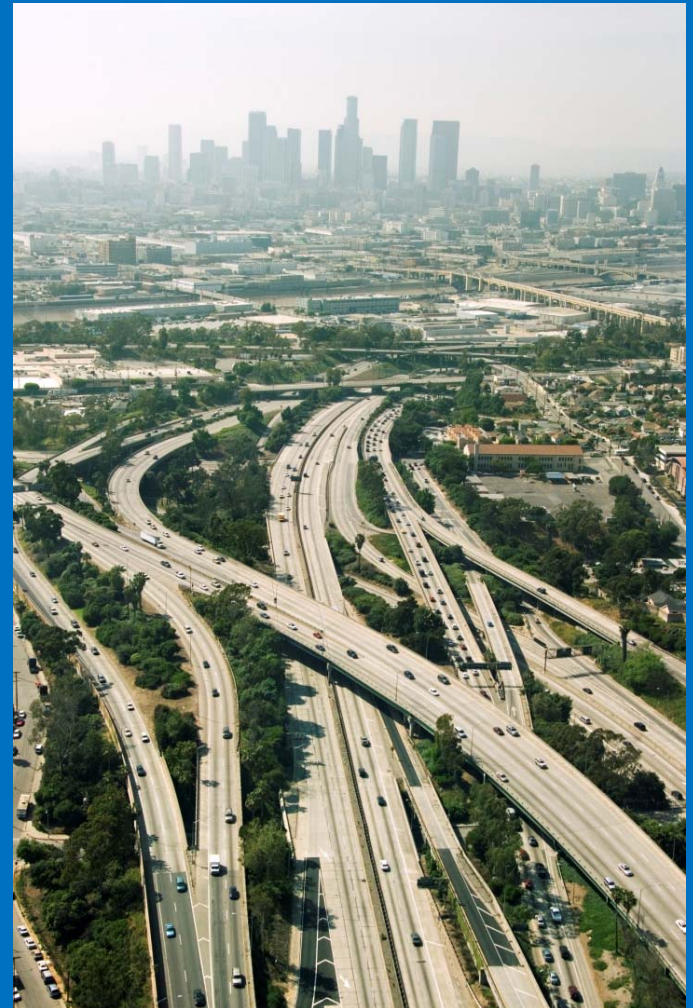
Keeps the Region Working

- Businesses near Metro- better access to employees and customers
- Job growth: four times higher at Metro stations than region
- 54% of the region's two million jobs are within ½ mile of Metro
- Proximity to Metrorail increases property value by 7-9%



What If There Were No Metro?

- More cars on the road
- New beltways
- More lanes for river crossings
- More parking spaces
- More congestion
- More money spent on auto expenses
- Poorer air quality



What If We Do Nothing?

- Threats to safety
- More delays, service disruptions and crowded conditions
- More congested highways as regional growth will outpace Metro investment
- Reduced overall quality of life
- Harms region's competitive advantage –talent, jobs, and investment dollars



Need to Plan

It's About Choices

- Core of rail system is already strained
- Some buses, platforms and railcars are standing room only
- No funding for any expansion beyond the Silver Line
- Region will face unprecedented growth
 - 30% increase in population
 - 40% increase in employment



Why Momentum?

Goal 1: Build and Maintain a Premier Safety Culture and System

Strategies:

- Fix and maintain the system
- Create a shared climate of safety
- Expect the unexpected
- Prepare for extreme weather



Goal 2: Meet or Exceed Customer Expectations by Consistently Delivering Quality Service

Strategies:

- Become a self-service system
- Focus on the customer
- Fix it first and fast
- Be on-time
- Make it easy to plan, pay, & ride



Goal 3: Improve Regional Mobility and Connect Communities

Strategies:

- Be the region's transit leader
- Maximize what we have
- Enhance access
- Expand for the future
- Support the region's economic competitiveness



Goal 4: Ensure Financial Stability and Invest in Our People and Assets

Strategies:

- Add new sources of predictable funding
- Invest for the long-term
- Increase efficiency and lower costs
- Be green
- Recruit and keep the best



Metro 2025: Maximize What We Have



100% 8-car trains



More station capacity



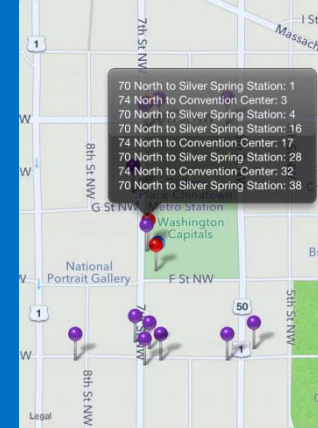
Underground pedestrian links



Complete Priority
Corridor Network



New infrastructure

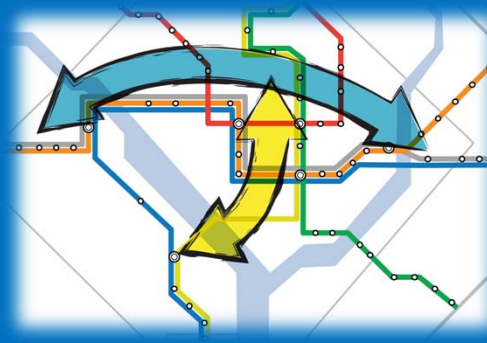


Next-generation
communications

Metro 2040: Expand the System



Complete Regional Transit System Plan (RTSP)



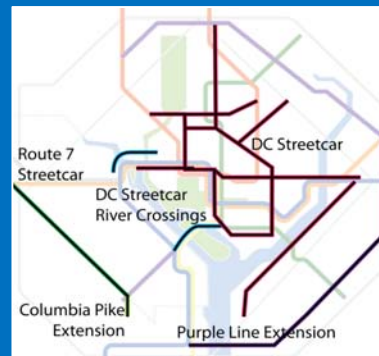
Evaluate new Metrorail lines in the core



Evaluate potential extensions



Extend high quality surface transit

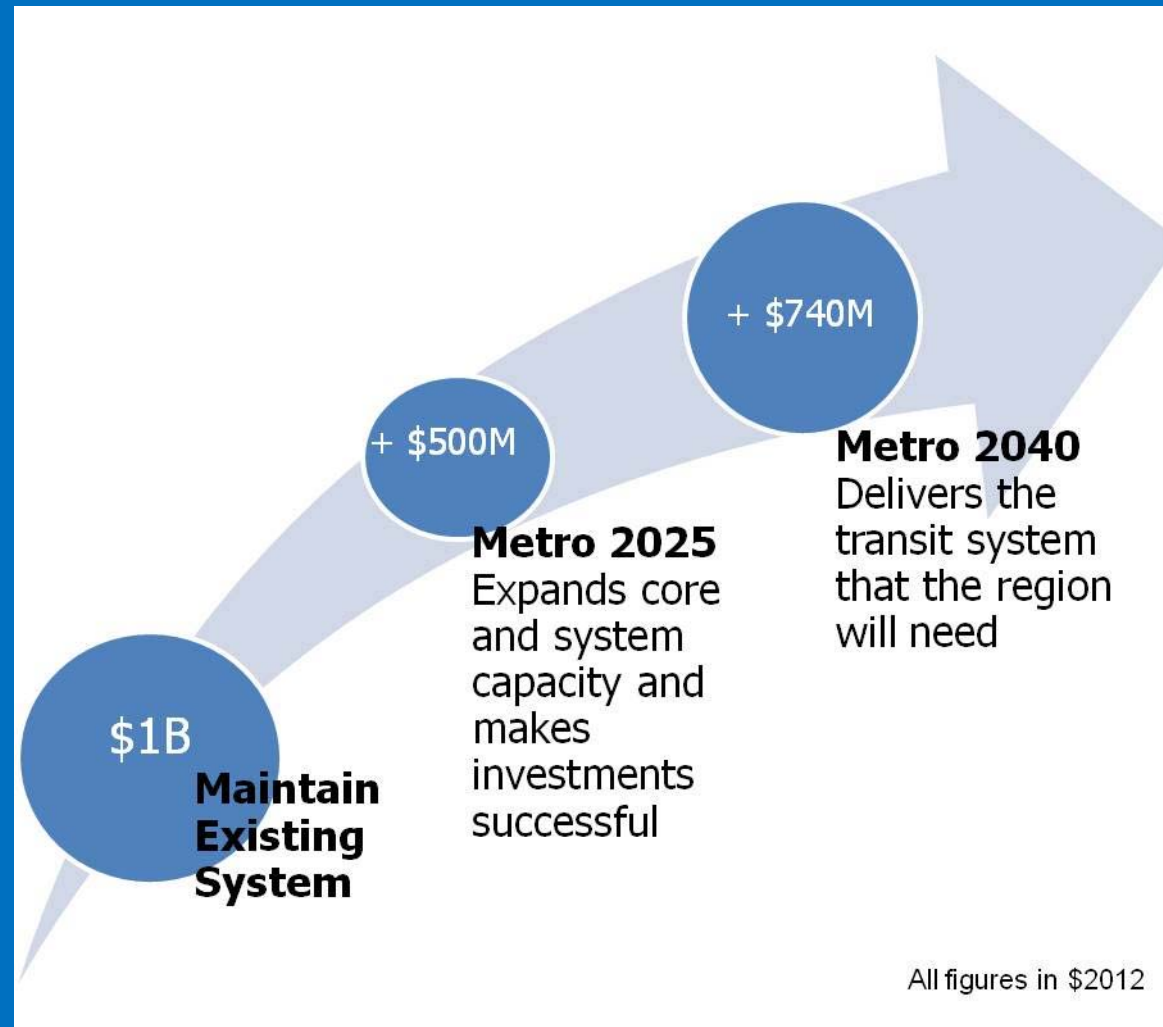


Evaluate cross-Potomac connections



Improve commuter rail/bus frequency and span of service

Momentum's Order of Magnitude Annual Capital Funding Needs





**Endorse the Plan at
wmata.com/momentum!**

strategic plan 2013-2025