

Gloria Sitton

From: Murray, Karlen <Karlen.Murray@andersencorp.com>
Sent: Friday, March 15, 2024 11:29 AM
To: Gloria Sitton
Subject: FW: BAR#2024-00112 OHAD
Attachments: Mortise and Tenon Construction .pdf; Bottom of window is 14' above sidewalk.jpg; Top of Tape Measure.jpg; Bottom of tape measure.jpg

Good morning Ms. Stitton,

Please see below email I sent to William Conkey regarding corrections and comments to the Staff Report. I would also like to add the attachments and photos for presentation tomorrow.

Thank you,

Karlen Murray
Renewal by Andersen
443-829-4576 Cell
Karlen.murray@andersencorp.com

From: Murray, Karlen
Sent: Friday, March 15, 2024 10:55 AM
To: William Conkey <william.conkey@alexandriava.gov>
Subject: BAR#2024-00112 OHAD

Good morning Mr. Conkey,

In reviewing the Staff Report, page 7, section (d) and (e) "The proposed composite windows utilize a mitered corner joinery in lieu of the overlapping corners." Please see attached Mortise and Tenon Construction. This is how Renewal by Andersen's windows are constructed.

Page 8 section (g) "windows will be plainly visible from a close distance" Please see attachments, Bottom of window is 14' above sidewalk, Top of Tape Measure and Bottom of tape measure.

Question, page 9 section V. "Certificate of Appropriateness and Permit to Demolish" Shouldn't this read Certificate of Appropriateness for alterations?

Thank you,

Karlen Murray
Renewal by Andersen
443-829-4576 Cell
Karlen.murray@andersencorp.com

SPOTLIGHT ON

Mortise-and-Tenon Construction



Beautiful,
clean look

Stronger
corner joints

A true sign
of quality

While traditional mortise-and-tenon joinery has been used for thousands of years by quality woodworkers around the world, less expensive windows are typically glued together which can produce unsightly corner welds. We believe our customers deserve a better looking and better quality window. We've combined new manufacturing technology with traditional mortise-and-tenon corner construction to create a more beautiful window with unprecedented performance. As the replacement window division of Andersen Corporation, we build our windows to last* year after year.



Interior views



Mortise-and-tenon corner seam
with beautiful, clean lines



Typical welded vinyl corner seam
with distracting ridges

Beauty in the Details

Our mortise-and-tenon corner construction eliminates those unsightly corner welds seen in many vinyl windows so all you see is smooth, clean lines that enhance any view.

Stronger Performance

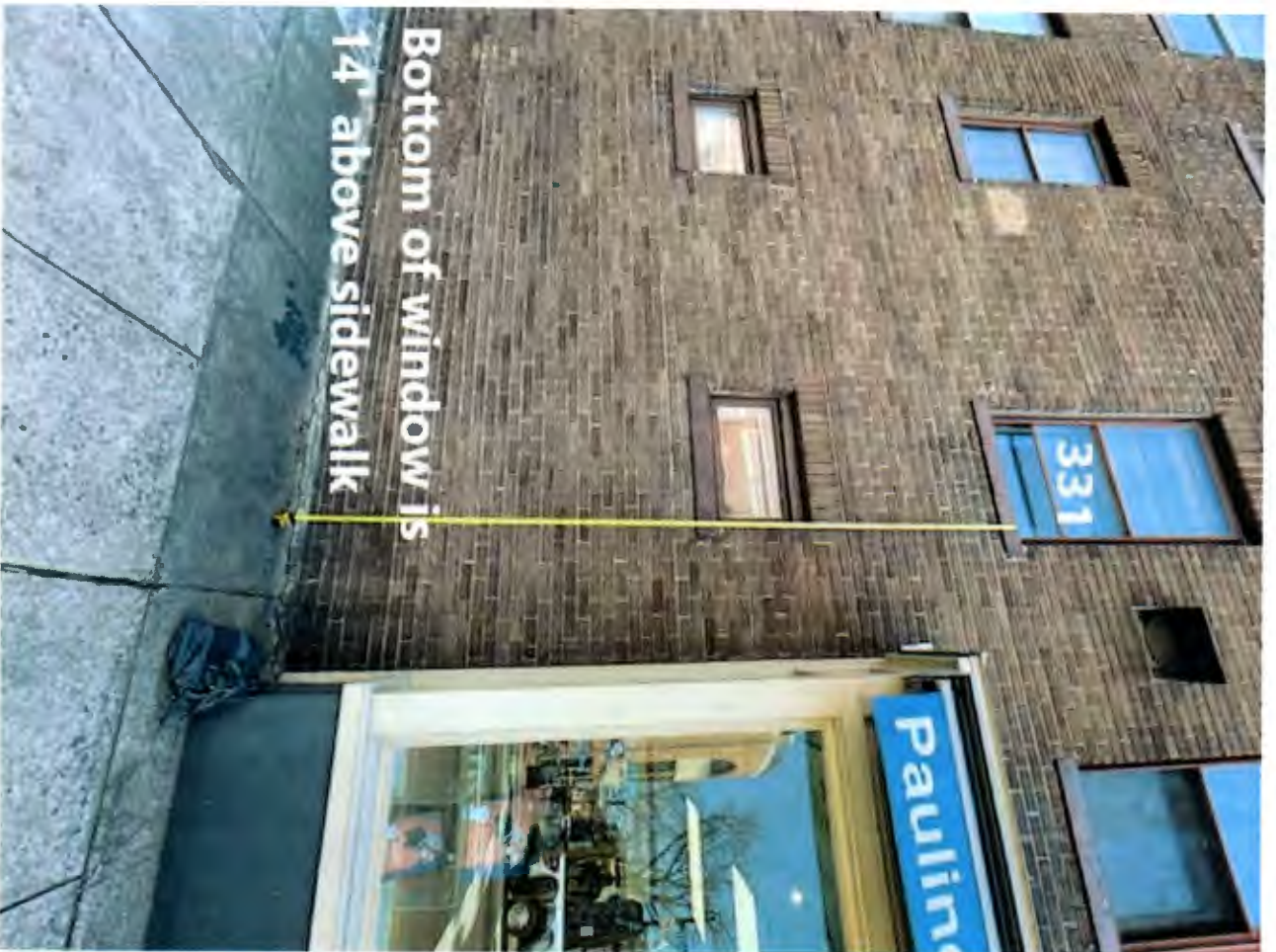
Our mortise-and-tenon corner construction provides greater strength and durability. Mortise-and-tenon joinery, combined with our Fibrex® composite framing material, is so strong that we can provide one of the largest gliding window sizes in the industry so you can easily enjoy those breathtaking views without sacrificing performance.

*See the Renewal by Andersen limited warranty for details. "Renewal by Andersen" and the Renewal by Andersen logo are registered trademarks of Andersen Corporation. All other marks where denoted are trademarks of Andersen Corporation. © 2021 Andersen Corporation. All rights reserved.

RENEWALBYANDERSEN.COM



RENEWAL
by **ANDERSEN**
FULL-SERVICE WINDOW & DOOR REPLACEMENT







Fibrex® Composite Material – Better Material, Better Performance

Andersen Corporation was founded in 1903 and soon revolutionized the way windows were installed by pre-cutting materials for carpenters to assemble on the building site. Over the years, Andersen has introduced many industry firsts. Andersen continues to be a leader in producing products that last longer, look better, and function smoothly for many years.



Over the years, Andersen has proudly introduced industry milestones, including new technologies and methods that made windows and doors last longer, look better, and function as intended for many years. By the 1950s, Andersen's research and development efforts were laying the groundwork for Fibrex® composite material and a brand new way to provide homeowners with beautiful, high quality, and efficient replacement windows.



1899
Andersen is the first company to develop a hollow vinyl window in the U.S. but decides it doesn't have enough structural integrity. But the low maintenance feature of the vinyl had possibilities.



1908-1918
Andersen expands its use of reclaimed wood fibers into pressed wood boards for hidden components of the window. Engineered wood – wood pieces combined and pressed together – prove stronger than traditional raw wood.



1991
Fibrex® composite material is patented. It combines the best qualities of wood and thermoplastic polymers.



1995
Renewal by Andersen is founded. Now one of the largest window replacement companies in the U.S., Renewal by Andersen windows incorporate more than 40 percent reclaimed wood fiber by weight from other window manufacturing operations.



To this day, Andersen Corporation operates under the core principles founder Hans Andersen put in place over a century ago.



When you purchase Renewal by Andersen® windows, you are purchasing time-tested innovation – and a piece of history that will last for years to come.²



Over 117 Years of Innovation and Excellence

Andersen® products and patents have revolutionized the window and door industry for over 117 years, changing the home construction industry, how homes are designed, and even how we live in our homes.

We are constantly testing and introducing new materials. Heat and cold chambers mimic extreme temperature conditions. Simulating devices produce extremes of dry and wet to test all new products. Windows, hardware, finishes, and packaging materials all undergo testing.

"You can get environmentally responsible replacement windows that are beautiful and help provide energy savings. We're proud that our windows have earned SCS Global Services recycled content and indoor air quality certifications, demonstrating our commitment to sustainability."

– Troy Barrow
President, Renewal by Andersen

1906
Andersen creates the "clad" window and door category. Andersen Research & Development invents a way to weld the corners together for airtight and watertight performance.

1970s
Andersen strives to improve the return on its resources by making windows and doors that perform and last. Andersen sees the extra wood created by its manufacturing process as a potential material resource. The company develops a window sash made from reclaimed wood fibers and thermoplastic polymers that performs and weathers well. But manufacturing methods are inefficient until developments are made in the next decade.

1993
Fibrex composite material used as a sub-sill component in the Andersen® Frenchwood® hinged patio door. The Fibrex composite material sill is selected for its superior strength and resistance to rot and decay, and performs exceptionally well in this demanding role.

2006
Renewal by Andersen® windows achieves the highest SCS certified recycled content of any window replacement company.



FIBREX® MATERIAL VASTLY SUPERIOR TO VINYL.

- FIBREX® MATERIAL WILL NOT CRACK, PIT, CORRODE OR ROT.²
- SUPERIOR SCRATCH RESISTANCE. FIBREX® MATERIAL VS. PAINTED VINYL.³
- 12X FIBREX® MATERIAL FINISH IS 12 TIMES THICKER THAN PAINTED VINYL FINISH.³
- FIBREX® MATERIAL ENDURES EXTREME HEAT
- 2X FIBREX® MATERIAL HAS DOUBLE THE STRENGTH OF VINYL



All of our windows are made of Fibrex composite material, a revolutionary composite made from reclaimed wood fiber blended with a polymer. This gives our windows the strength and durability of wood and the low-maintenance features of vinyl, while greatly limiting thermal transmittance that can be found in other window materials such as metal.

Unlike many other window materials, Fibrex composite material won't flake, rust, blister, peel, crack, pit, corrode, or rot.² It is also two times stronger than vinyl and resists warping and bowing. Never worry about scraping or painting your windows again.



The Better Way to a Better Window®

²See Renewal by Andersen Products and Installation Recommendations (under Warranty by Andersen).

³See Renewal by Andersen Products and Installation Recommendations (under Warranty by Andersen). "Renewal by Andersen" products were tested against the leading competitive painted vinyl window products, "Weather"™, "Renewal by Andersen" and the Renewal by Andersen logo are trademarks of Andersen Corporation. "12X" and "2X" are registered trademarks of the U.S. Environmental Protection Agency. All other marks where depicted are trademarks of Andersen Corporation. © 2021 Andersen Corporation. All rights reserved. 104/2021



RENEWAL
by ANDERSEN
FINE SERVICE WINDOW & DOOR REPLACEMENT



Windows Manufactured
with Fibrex® Composite
Material – a Better Alternative
and a Better Window

Reinventing the Window

Innovation has been a hallmark of Andersen Corporation since its founding in 1903. From implementing "mass production" techniques in 1904 (nine years before Henry Ford), to producing the first completely assembled window unit in the industry (1926), to becoming the world's largest specialized window frame factory in 1929, our guiding principle has always been to "make a product that is different and better." Each step of the way we have incorporated the latest technologies, fine precision, and high standards in our quest to be better.

Introducing Fibrex® Material

One of our most innovative ideas is Fibrex material. This revolutionary composite combines the strength and stability of wood with the low-maintenance features of vinyl. In fact, you might say it's an evolutionary product. Andersen scientists developed the first hollow vinyl window in the U.S. in 1959, and engineered composite window materials in the 1960s and 1970s. In 1992, Andersen perfected composite window technology and patented Fibrex material. Today, Fibrex material is the perfect choice for your new replacement windows.

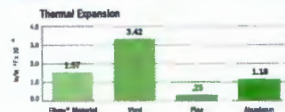
FIBREX® MATERIAL IS A BETTER CHOICE

	Fibrex Material	Other Materials
Strength	Because Fibrex® composite material is strong, we can make our sash and frames narrower. Narrower frames mean more glass and more view.	Vinyl frames are known to have a higher expansion/contraction rate and can bow, breasting the glass seal.
Insulation	Fibrex composite material has superior thermal insulating properties. Combined with Andersen® High-Performance Low-E4® glass, this helps your home stay warmer in winter and cooler in summer. You can help save money on your energy bills. Your home feels more comfortable.	Aluminum window frames conduct heat and cold. Heat leaks out of your house in the winter and into your house in the summer.
Low Maintenance	Fibrex composite material never needs scraping or painting. It won't rot, decay, or mold!	Fiberglass frames are painted and may need regular maintenance.
Beauty	Renewal by Andersen® replacement windows preserve the architectural beauty of your home. Frame and sash design reflect the shape and lines of your original windows. The unique extruded Fibrex composite material can be made into any kind of window – including curved specialty windows.	Most replacement windows have square profiles that may look artificial in your home. Vinyl frame material is often thicker, reducing glass area. Fiberglass can only be made into straight lines.
Environmental Responsibility	40% of the raw material by weight used to make Fibrex composite material is clean, reclaimed wood fiber. Reclaimed materials in the manufacturing process can also be reground and reused.	Fiberglass is a thermoset material and cannot be reformed into new profiles.
Warranty	A window is not just glass and some framing material. It's a precise combination of glass, frame, and quality installation. We back it all with a Products and Installation Limited Warranty* that is one of the best in the business.	Installation is rarely covered in the written warranty.

The "Material" Difference

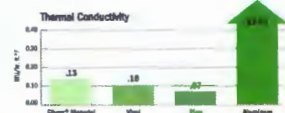
Consider all you expect windows to do for your home. Fibrex® composite material makes a difference in every instance. Measured across a range of conditions that affect the efficiency, maintenance, and beauty of windows, Fibrex composite material performs well compared to vinyl, aluminum, fiberglass, and wood. Take a look and we think you'll agree – replacement windows made of Fibrex composite material are the right choice for your home.

Durable and Reliable



Fibrex composite material is durable and reliable, and – like wood, fiberglass, and aluminum – it expands and contracts very little. However, vinyl can expand and contract significantly. Vinyl may cause cracks, bowing, and air or water leaks. Windows made of Fibrex composite material will perform better in winter and summer than windows made of vinyl.

An Excellent Insulator



Fibrex composite material has excellent insulating properties on par with wood, vinyl, or fiberglass. Aluminum, on the other hand, transfers heat out of your home and allows outdoor temperatures to chill window areas inside. Fibrex composite material insulates about 700 times better than aluminum.

The Process Is Easy

Visit renewalbyandersen.com or call your local Renewal by Andersen showroom for a free in-home or no-contact consultation.

Stable and Predictable



Fibrex composite material is twice as stable and rigid as vinyl. Wood's average stiffness is higher, but it's less predictable than Fibrex composite material because of wood's natural variations like grain, knots, and moisture content. Fibrex composite material is strong so frames can be made narrower than with other framing materials. Narrower frames mean more glass, and more view. Fibrex composite material can be made into any style of window – including curved specialty windows – and in colors to complement every home.

Decay Resistant



With Fibrex composite material, a special polymer formulation surrounds and coats each wood fiber in the manufacturing process, providing exceptional resistance to rot and fungal growth. Renewal by Andersen's windows, made with Fibrex composite material, never need scraping or painting because they are warranted not to flake, rust, blister, peel, crack, pit, or corrode!



The Better Way to a Better Window®

* See Renewal by Andersen Product and Installation Limited Warranty for details.

* See Renewal by Andersen® Product and Installation Limited Warranty for details.



321

320

319

318

317,316 315

314 313,312 311

339

338

337

336

335,334

333

331 332a,b 330

HENRY ST ELEVATION