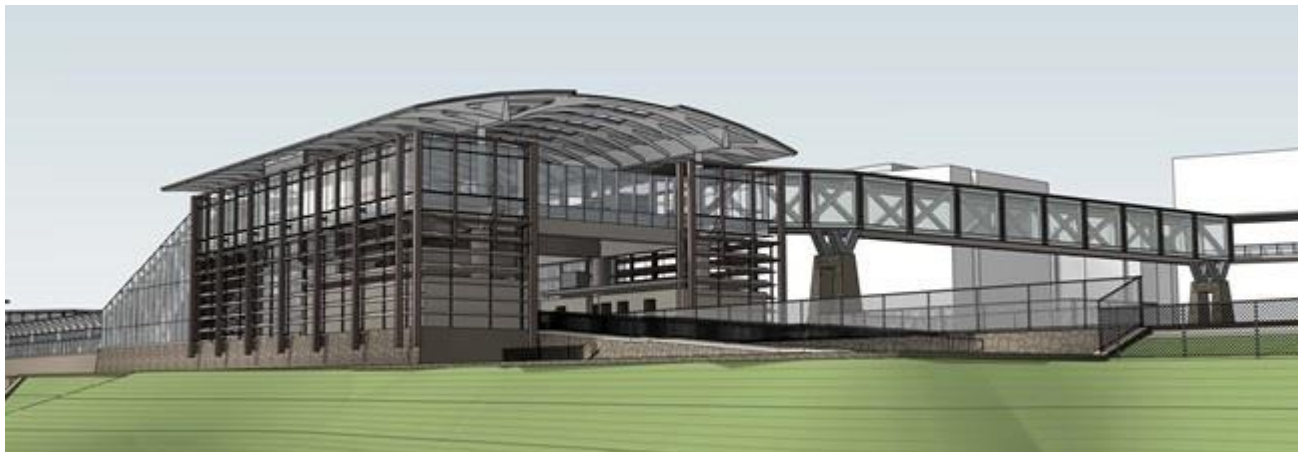


# POTOMAC YARD METRORAIL STATION PROJECT

City Council Project Update

May 14, 2019



# ONGOING ACTIVITIES

- PYC activities
  - Design
  - Permitting
    - Partial Final Site Plan submitted April 26<sup>th</sup>
- South entrance design
- Environmental permitting
  - Army Corps has posted their public notice
    - April 5<sup>th</sup> - May 6<sup>th</sup>
  - City submitted requested information to Department of Environmental Quality (DEQ) April 29<sup>th</sup>

# COMMUNITY OUTREACH - RECENT AND UPCOMING MEETINGS

- PYMIG meetings
  - Previous
    - April 22<sup>nd</sup>
  - Upcoming
    - May 21<sup>st</sup>
    - June 13<sup>th</sup>

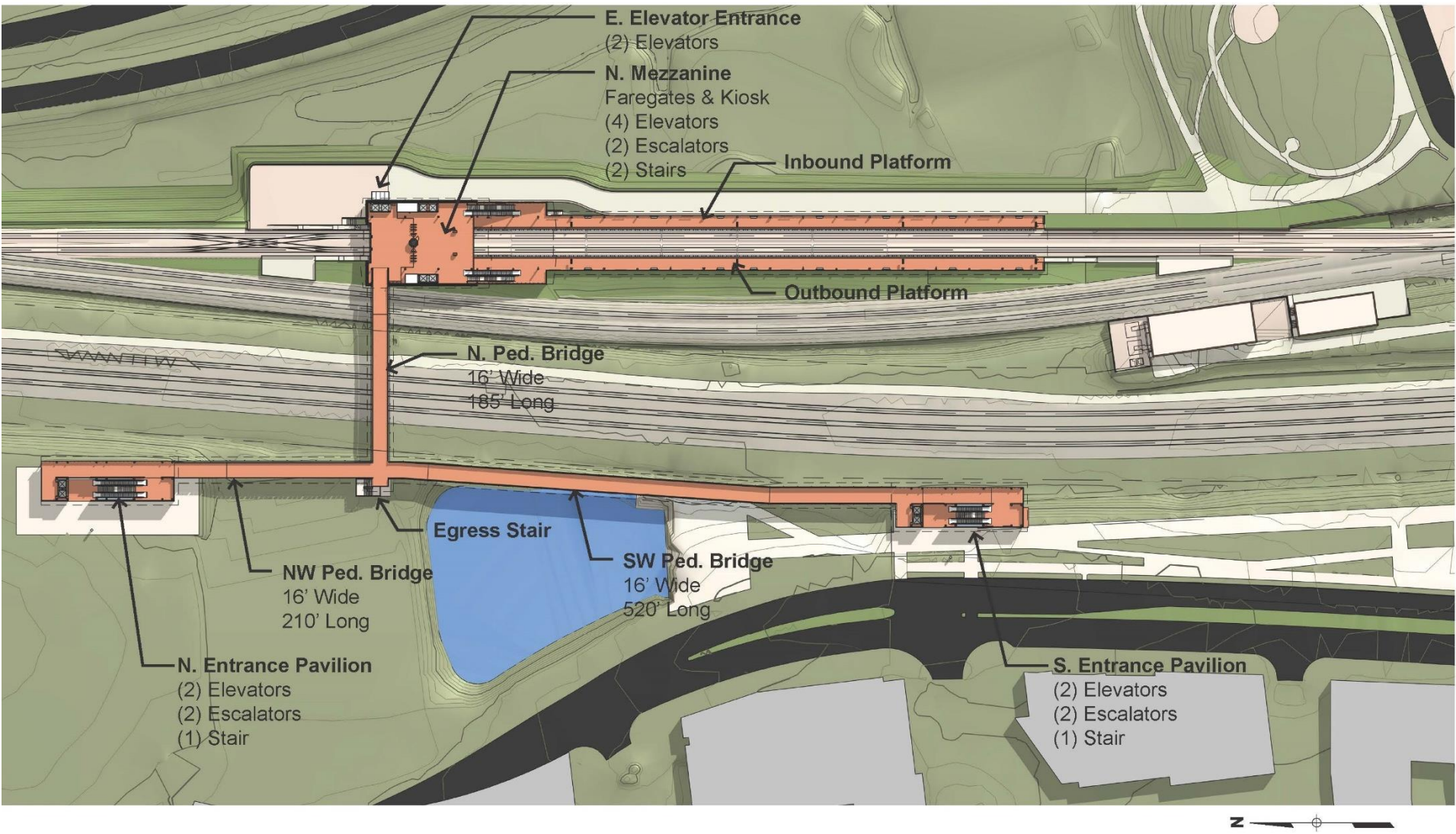
# SOUTH ENTRANCE DESIGN PROCESS

- Presented design ideas
- Received community feedback
- Discussed process/ matrix
- WMATA and Contractor performing cost estimates and schedule analysis
- Cost estimates and schedule analysis anticipated late May/early June

# SOUTH ENTRANCE DESIGN IDEA #1

## SOUTH ENTRANCE PAVILION W/ BRIDGE

As presented during the  
1/14/19 and 3/18/19  
PYMIG meetings





# SOUTHWEST ENTRANCE DESIGN IDEA #1

## PAVILION WITH PEDESTRIAN BRIDGE

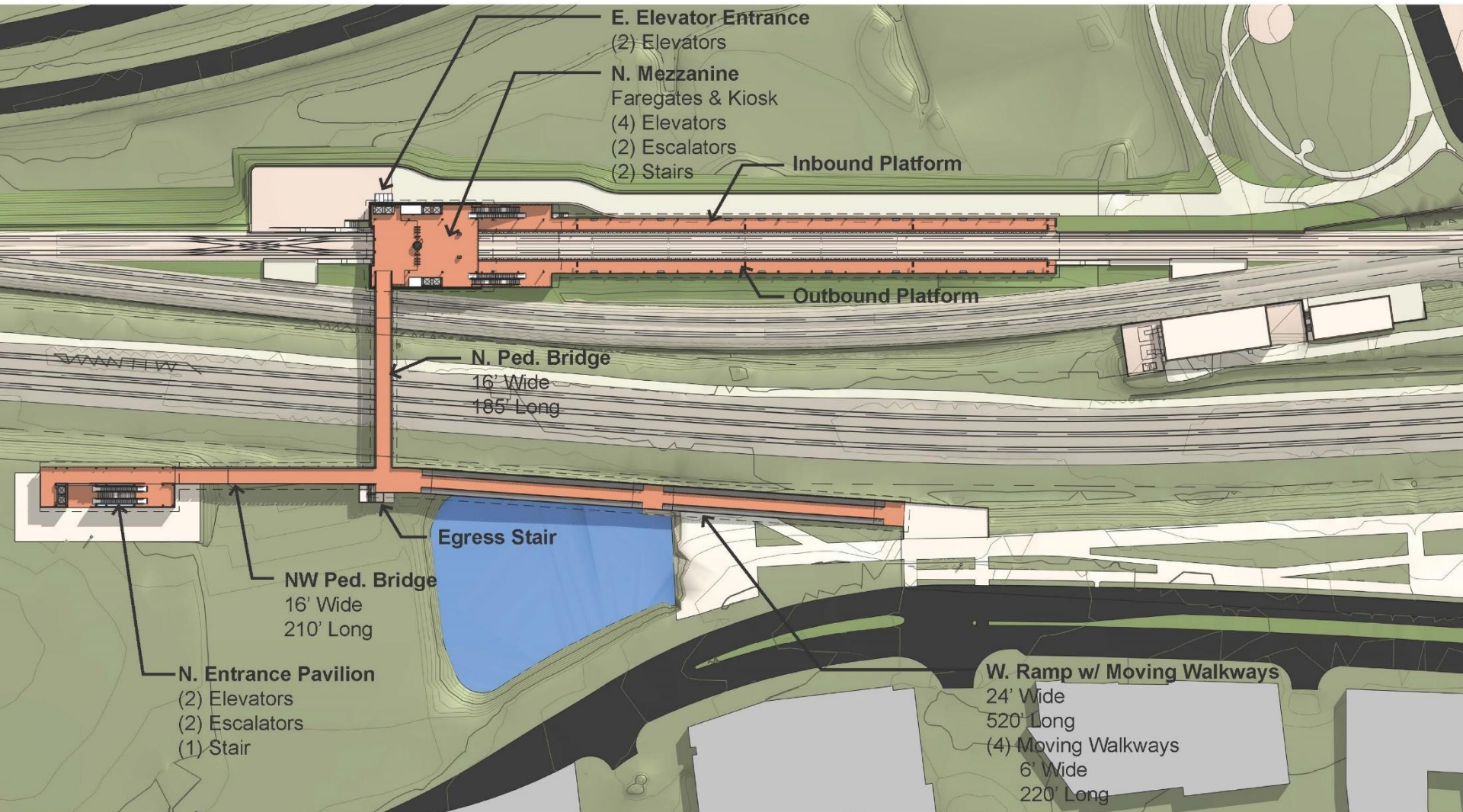
### SOUTHWEST ENTRANCE PAVILION LOOKING NORTHEAST



# SOUTH ENTRANCE DESIGN IDEA #2

## E. GLEBE RAMP W/ MOVING WALKWAY

As presented during the  
1/14/19 and 3/18/19  
PYMIG meetings



# SOUTHWEST ENTRANCE DESIGN IDEA #2

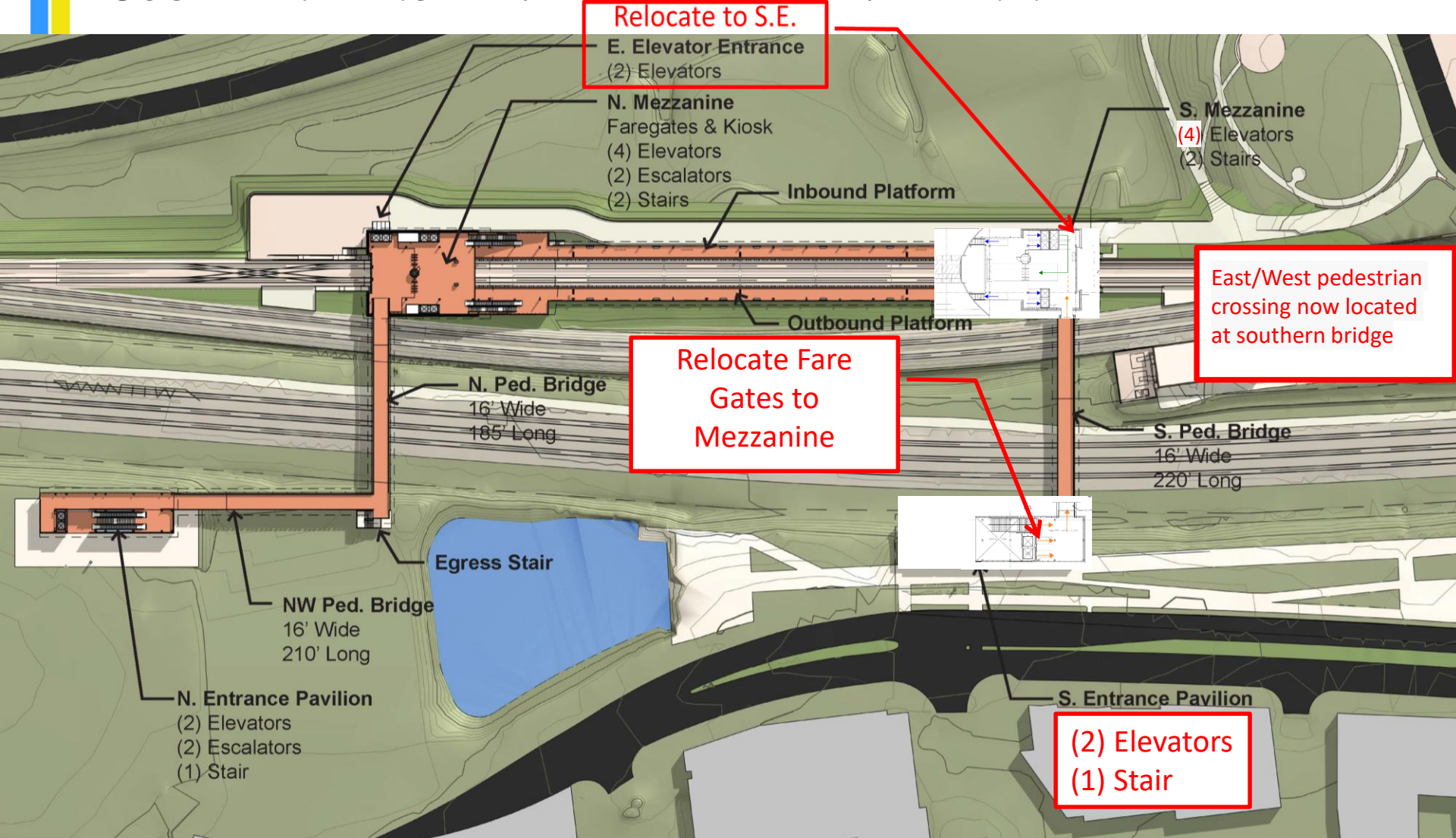
## RAMP WITH MOVING WALKWAY LOOKING NORTH





# SOUTH ENTRANCE DESIGN IDEA #3-PYC PROPOSAL

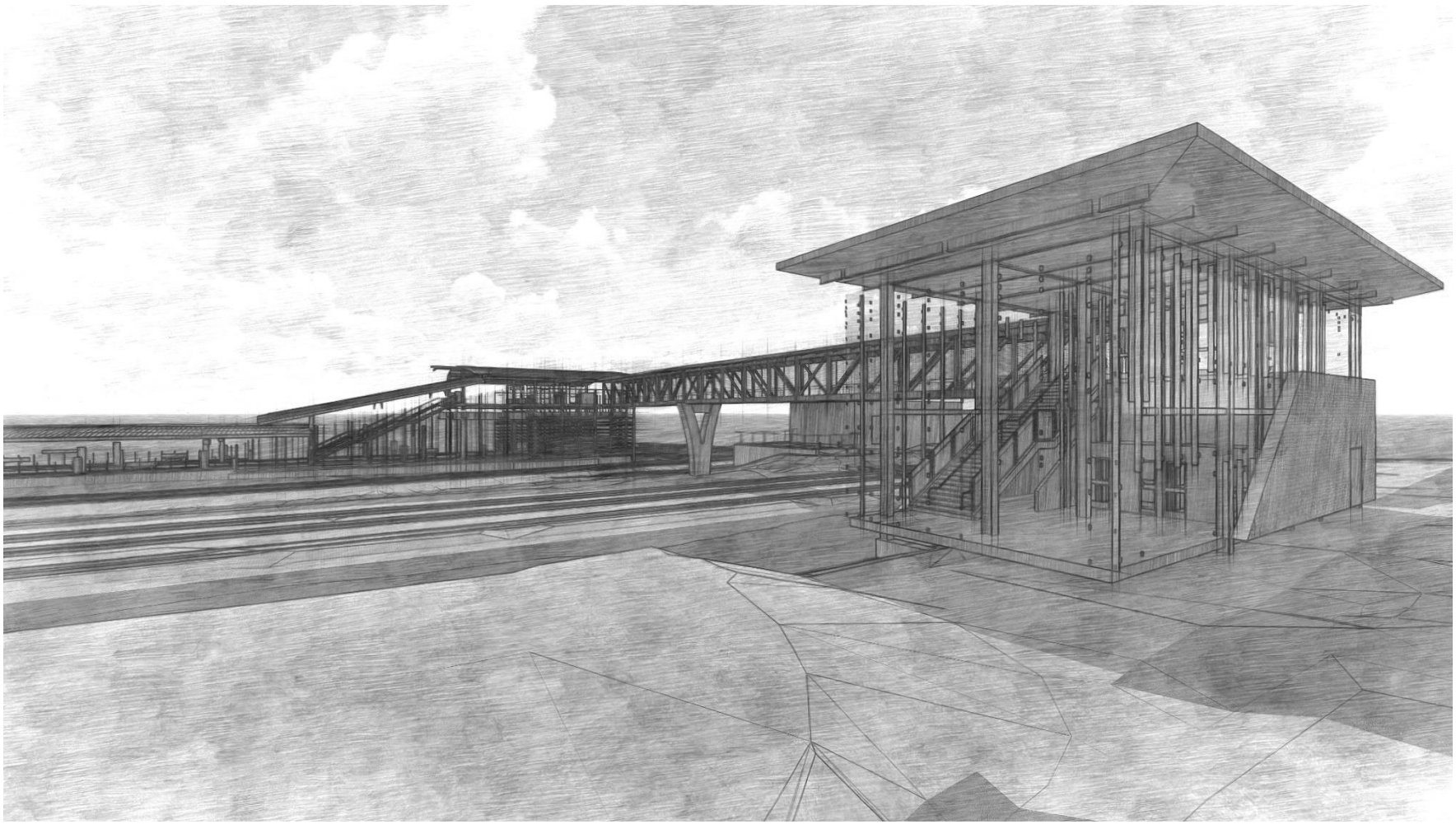
## SOUTH ENTRANCE PAVILION W/ SMALL MEZZANINE



# SOUTHWEST ENTRANCE DESIGN IDEA #3

SOUTH ENTRANCE PAVILION W/ SMALL MEZZANINE

SOUTH PAVILION AND SOUTH MEZZANINE LOOKING SOUTHEAST



# SOUTHWEST ENTRANCE DESIGN IDEA #3

## SOUTH MEZZANINE LOOKING NORTHWEST



# UPCOMING COUNCIL ACTIONS

- Budget consideration
- DSUP amendment



# QUESTIONS?