

# The Art League

800-824 Slaters Lane | SUP 2023-00052

---

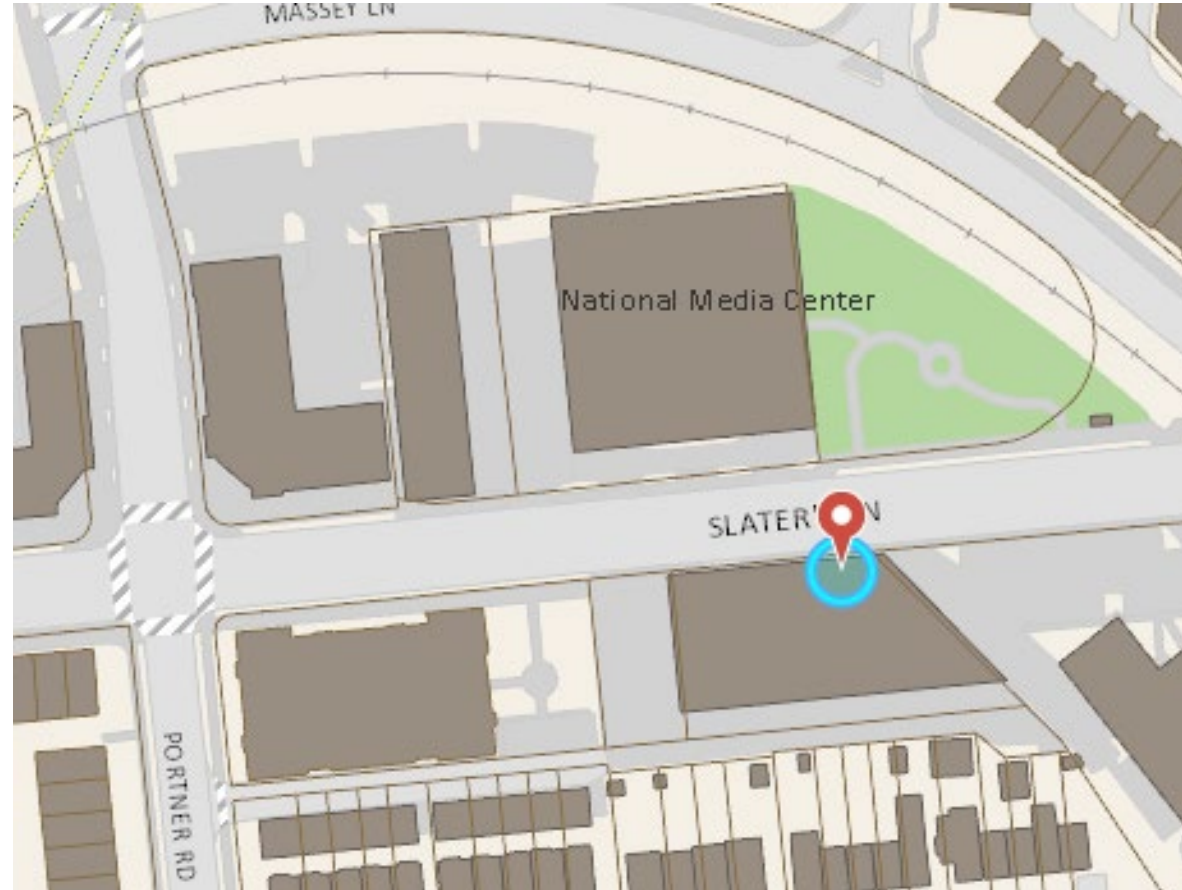
City Council

September 23, 2023



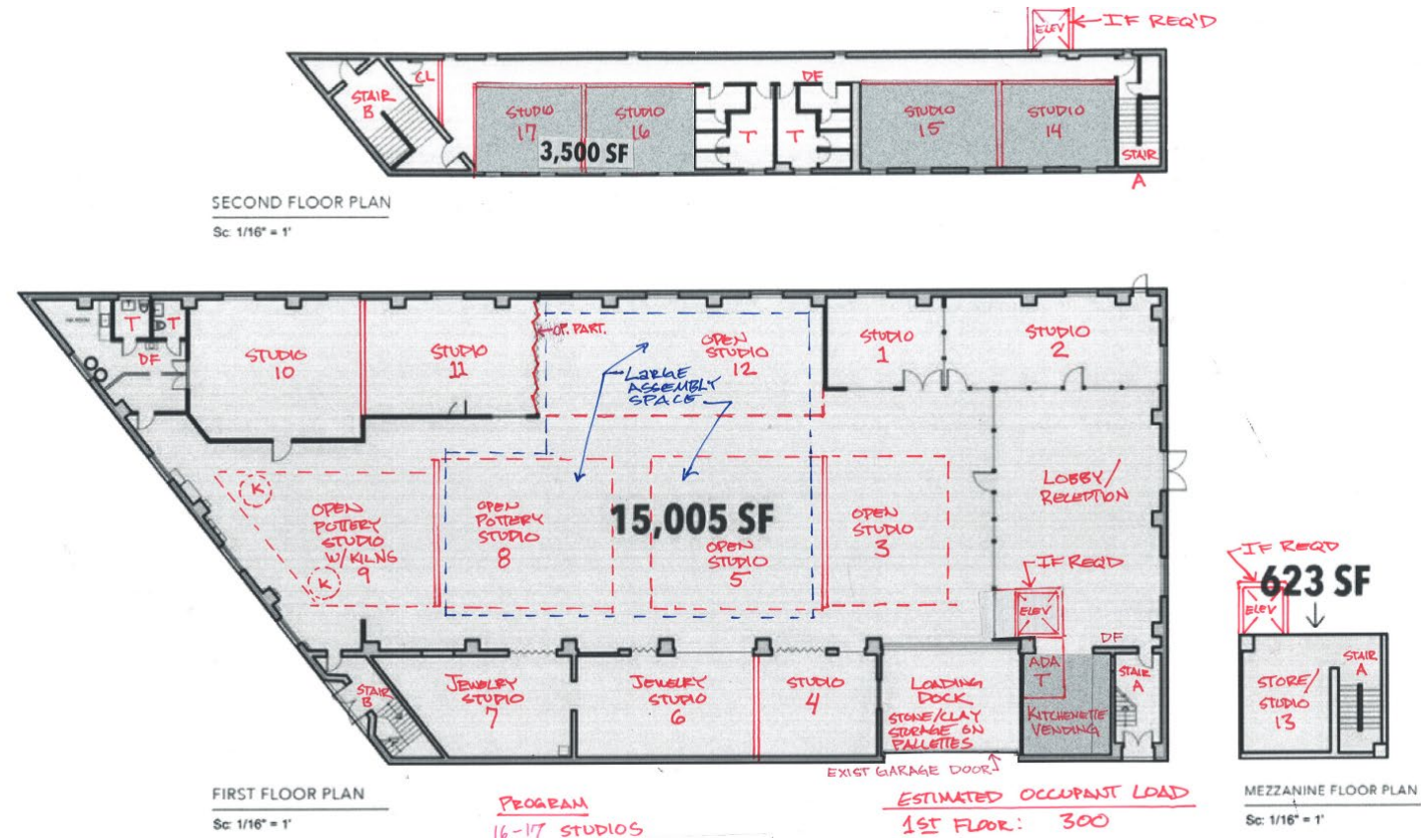
# Site Context

- Situated east of Portner Road and west of the George Washington Memorial Parkway
- Zoned RC/High density apartment
- Surrounded by residential, office, and commercial uses



# Special Use Permit Request

- To allow the use of an existing 16,508 square foot building as a private commercial school, known as the Art League
- 17 studios for a variety of art classes





The Planning Commission  
recommended approval