

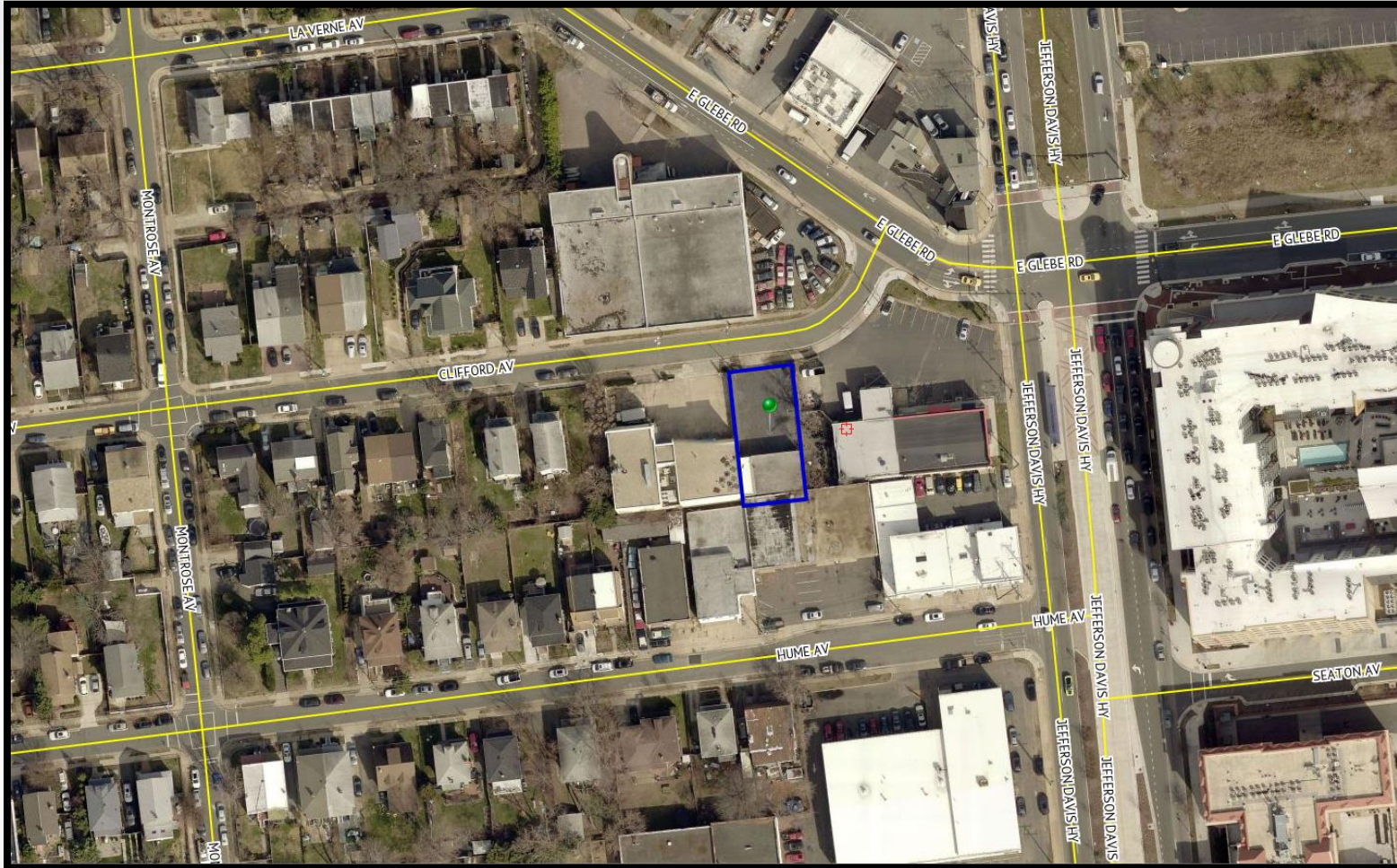


SUP#2018-0017

421 Clifford Avenue

Planning Commission

June 5, 2018



- The applicant, Mother of Light Center seeks approval of a social service use at 421 Clifford Avenue (outlined in blue).



- Volunteer Orientation and Training.
- Food and Clothing Collection and Distribution off-site.
- Counseling and Tutoring (six clients/week).



COMMUNITY OUTREACH

- Two meetings with the Del Rey Land Use Committee
- Door-to-door knocking campaign



CONDITIONS

2. CODITION AMENDED BY PLANNING COMMISSION: The applicant shall operate consistent with the description below. Any intensification of the use, including an increase of homeless services, will require City Council approval of an amendment to the SUP. ~~(P&Z)~~ (PC)

- a. The operating hours shall be between 8 a.m. and 4 p.m., Monday through Saturday.
- b. Religious services are permitted as an accessory use to the operation.
- ~~c.~~
- ~~d.~~-c. On-site storage of materials for the off-site distribution only is permitted. No on-site distribution of materials, such as clothing and food, shall be permitted.
- ~~e.~~-d. Administrative office activities are permitted.
- ~~f.~~-e. On-site appointments are permitted for counseling, tutoring or assistance with social service applications three days a week from 2 p.m. to 4 p.m. for a maximum of two clients per day.
- ~~g.~~-f. Volunteer training is permitted.
- ~~h.~~-g. Youth volunteer events are permitted Saturday between 1 p.m. and 4 p.m., only.
- ~~i.~~-h. Cooking is not permitted on-site.
- ~~j.~~-i. A maximum of 17 volunteers is permitted on-site at any one time.

14. CONDITION AMENDED BY PLANNING COMMISSION:

Supply deliveries, loading, and unloading activities shall occur between the hours of 8 a.m. to 4 p.m., and must occur entirely on-site by a passenger vehicle or 12-foot box truck, and met by staff or a volunteer. Deliveries, loading, and unloading shall not occur from Clifford Avenue. ~~(P&Z)~~ (T&ES) (PC)



STAFF RECCOMENDS APPROVAL.