

Docket Item #2

Total Auto Packaging

3205 Colvin Street and 3206 Duke Street | Special Use Permit #2023-00083

Planning Commission

December 5, 2023

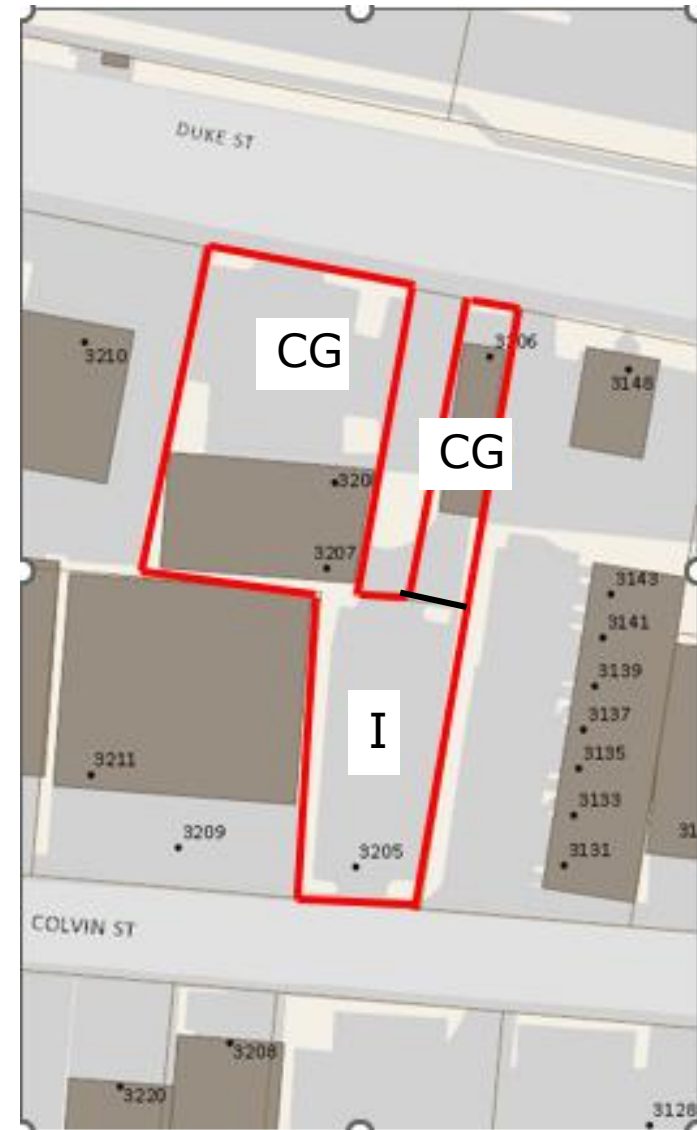


Site Context

**Split Zoned Commercial
General and Industrial**

**Located between Duke
Street to the north and
Colvin Street to the south**

**Surrounded by a mix of
industrial, residential, and
commercial office uses**



Special Use Permit Request



- Vehicle sales use located indoors at the lower level of 3206 Duke Street, facing Colvin Street, and outdoors at 3205 Colvin Street
- Up to 10 vehicles for sale displayed at 3205 Colvin Street surface parking and inside at 3206 Duke Street
- 11 a.m. to 6 p.m., Monday through Saturday
- Four to six customer visits per week





Staff recommends approval of the Special Use Permit request subject to the conditions in the staff report